

Status: 12/2021



Products need labeling

Guide to label and ribbon applications



Key notes first



"Each product requires at least one label for identification, indication of ingredients or traceability. Dictionaries assign names to products, but only labels give them identities. Our consultants assist in selecting materials and support consistently until the materials have been integrated in your processes."

Yours, Heiko Weber
Head of Department

Arguments for choosing cab labels

- Extensive range ex stock
- Labels can be manufactured also as needed from more than 400 materials.

Arguments for choosing cab ribbons

- Wax and resin qualities, added by wax/resin mixtures
- Heat is dissipated in an optimum way to protect the print head.
- Special backcoating prevents from friction resp. electrostatic charge.



For further information see
www.cab.de/en/consumables
Contact us: etiketten@cab.de



Automotive, machinery and engineering, aerospace



Conveyor plants, lathes and milling machines are operated all day in factories, garages or outdoors. Supply chains, machine guidelines and spare parts management demand typification on the basis of labels for example on engines, tires, small load carriers and containers, particularly resilient in harsh environments. cab provides sampling corresponding to the PPAP method (IATF 16949).

Material recommended by cab

Polyester in typeplate applications



indoor



tearproof



outdoor



smear-/scratchproof

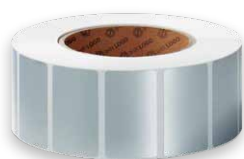


resistant to humidity



resistant to chemicals

Suitable black ribbons are of resin quality

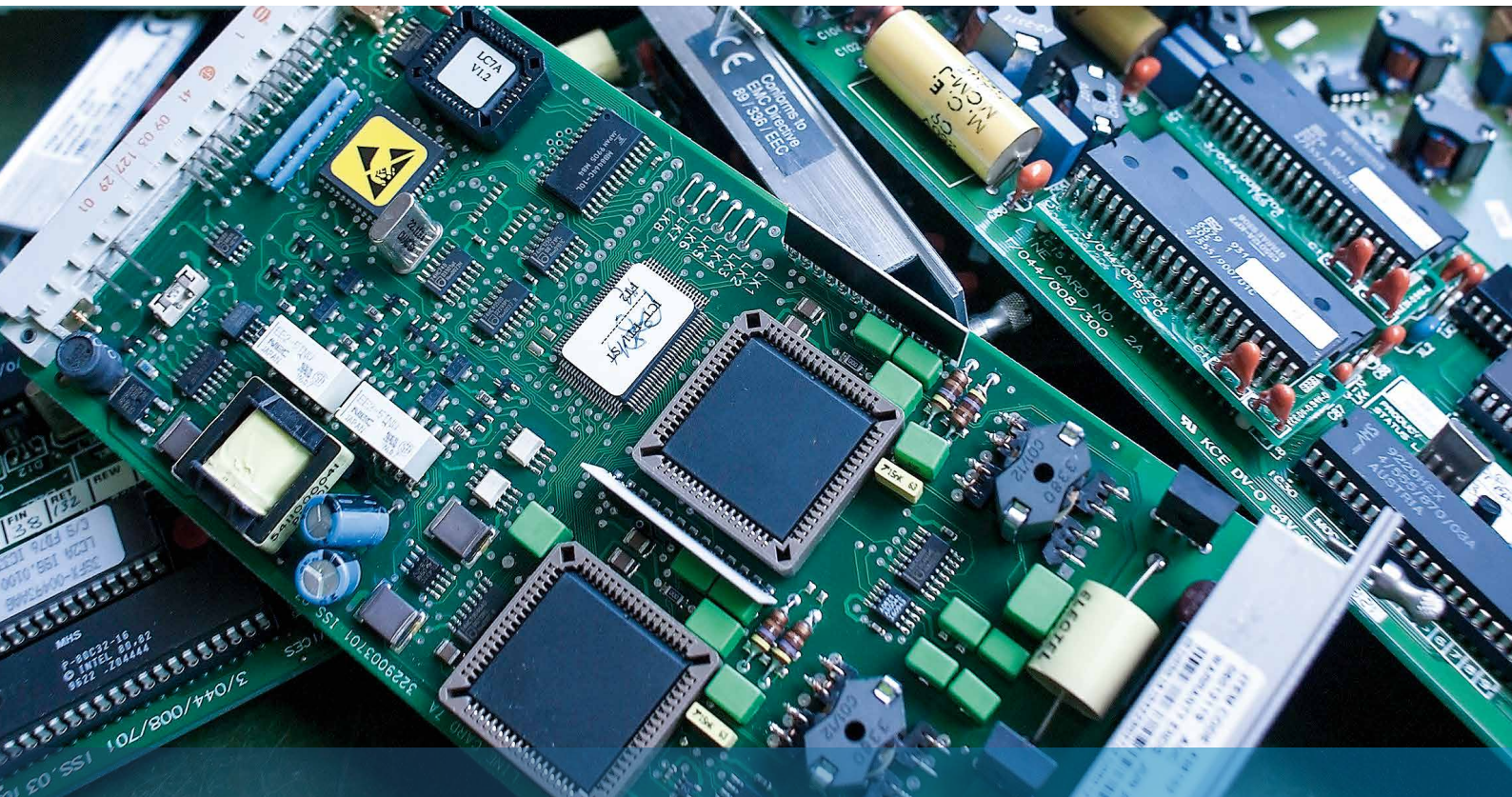


+



For further information see
www.cab.de/en/consumables
 Contact us: etiketten@cab.de

Electronics



Sensitive components can be impaired in function or destroyed by electrostatic discharge during processing. Automatic machines verify codes on labels in assembly lines, to assign data of components and processes uniquely. When components are soldered on PCBs in a heat chamber, temperatures rise to several hundred degrees. cab provides materials UL-certified on request.

Materials recommended by cab

Polyester in ESD applications

- | | |
|--|--|
|  indoor |  tearproof |
|  outdoor |  smear-/scratchproof |
|  resistant to humidity |  suitable for ESD use |



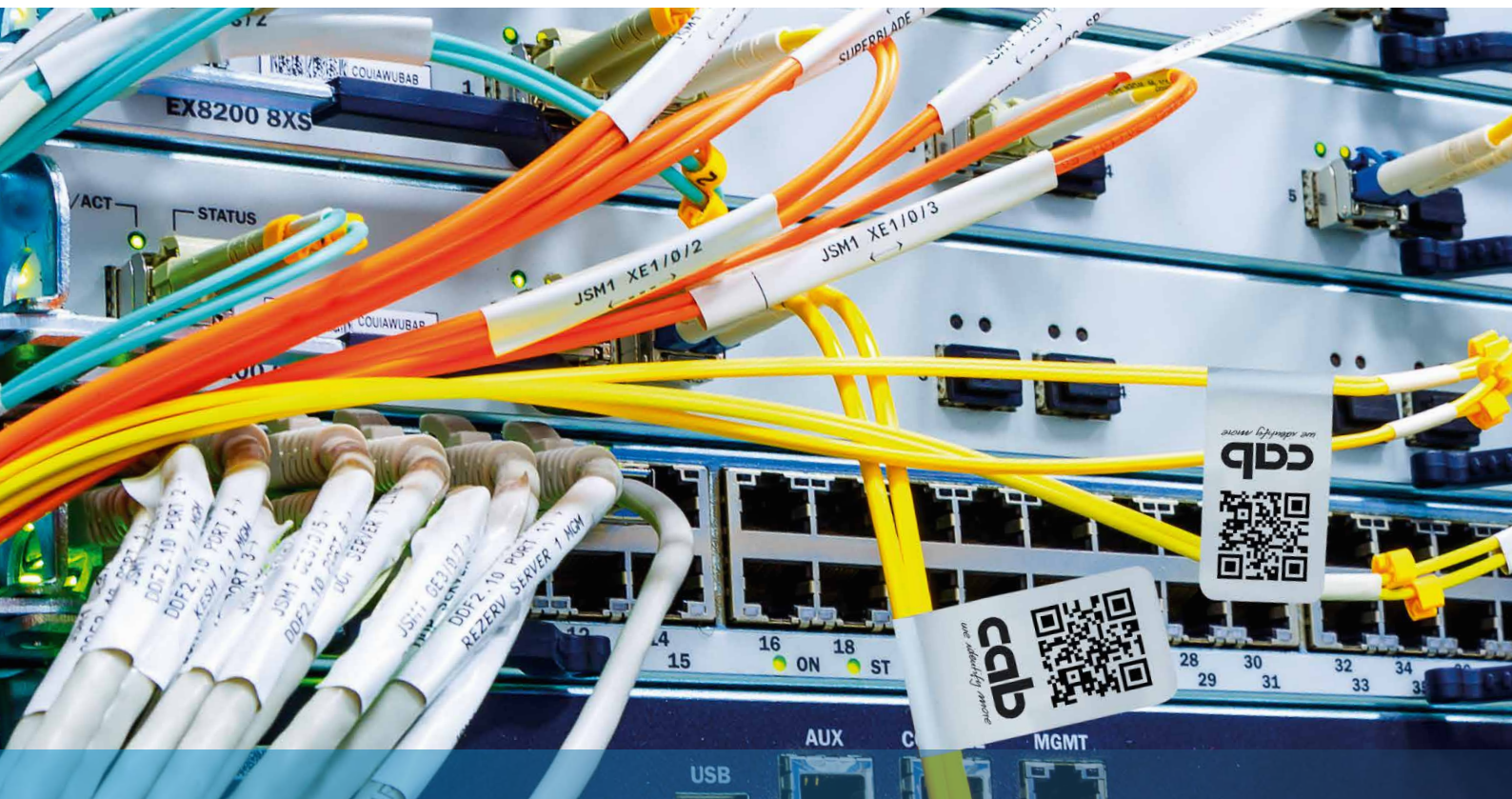
Polyimid in PCB marking

- | | |
|--|--|
|  indoor |  tearproof |
|  outdoor |  smear-/scratchproof |
|  resistant to humidity |  resistant to chemicals |
| |  resistant to heat |



Suitable black ribbons are of resin quality.

Round materials



Labels intended for automatic processing on a cab flag applicator are optimized. Subsequent to printing serial numbers or barcodes, the printed labels can be fold around cables. Wrap-around labels are a good choice if instructions for use or other small texts have to be attached to small cylindrical containers.

Materials recommended by cab

Polyester in cable flagging

- | | |
|---|--|
|  indoor |  tearproof |
|  outdoor |  smear-/scratchproof |
|  resistant to humidity |  resistant to chemicals |

PVC foil in wrap-around labeling

- | | |
|---|--|
|  indoor |  tearproof |
|  outdoor |  smear-/scratchproof |
|  resistant to humidity |  resistant to chemicals |

Suitable black ribbons are of resin quality



For further information see
www.cab.de/en/consumables
 Contact us: etiketten@cab.de



Pharmaceutical and medical technology



Clinics and hospitals demand identification free of errors. Markings have to remain legible during processing, on samples at temperatures as low as 196 °C below zero. On medication or cosmetics, labels by sealing prevent from manipulation, either by tearing on removal or by leaving emblems on the surface and being no longer fully transferable. AXON devices by cab serve for all-around labeling of tubes or vials in labs.

Materials recommended by cab

Polyolefin in cryogenic applications

- | | |
|--|---|
|  indoor |  tearproof |
|  outdoor |  smear-/scratchproof |
|  resistant to humidity |  resistant to cold |

Polyester in tamper evidence

- | | |
|--|---|
|  indoor |  tearproof |
|  outdoor |  smear-/scratchproof |
|  resistant to humidity | |

Suitable black ribbons are of resin quality.



Chemicals



GHS regulations demand chemical substances to be labeled compliant to uniform guidelines. Depending from an operating process and the manners products are stored and transported, special resiliencies are required of materials. On containers, labels have to stick securely even in rough conditions or in sea water (according to BS5609/3 standard).

Material recommended by cab

Polypropylene in marking hazards



indoor



tearproof



outdoor



smear-/scratchproof



resistant to humidity



resistant to chemicals



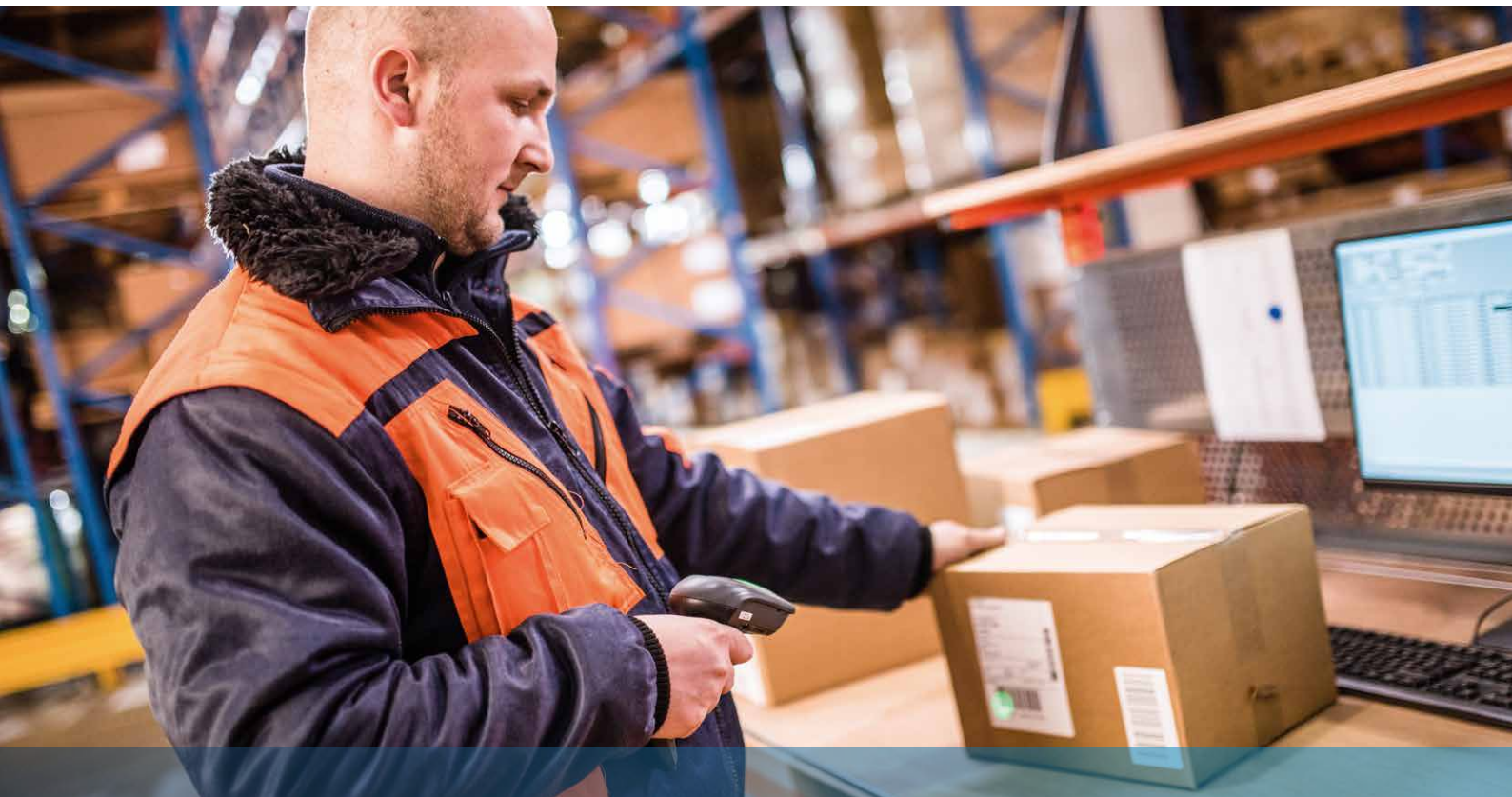
resistant to sea water

Suitable ribbons in black and red are of resin quality.



For further information see
www.cab.de/en/consumables
 Contact us: etiketten@cab.de

Logistics, office and administration, retail and wholesale



Labels accelerate the turnover of incoming goods and, on goods stored indoor or outdoor, provide information to be read by machines. Packages and containers can be identified and tracked during picking, on shipment and transport. In offices and administration, labels support procurement, documentation, maintenance and inventory.

Material recommended by cab

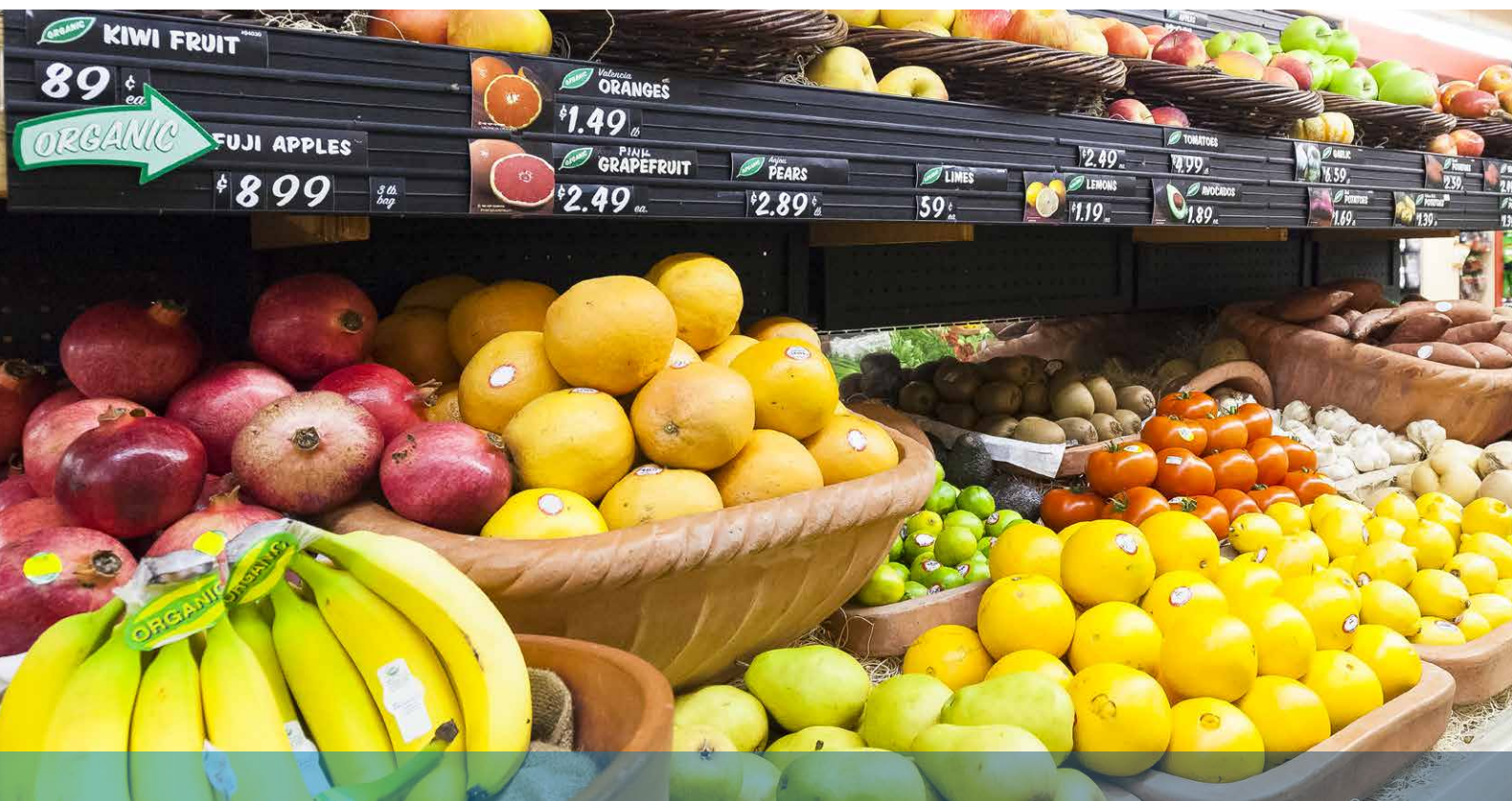
Paper in applications related to logistics



indoor

Suitable black ribbons are of wax quality or wax/resin mixtures





Label data can decide whether a product is carried by a consumer to the checkout or returned to the shelf. Ingredients, nutritional values or allergens, prices, quantities, shelf life or origins may be relevant. Individual tasks are required from a label: labeling of goods indoor or outdoor, in freezers, on packaging or as tags on meat or fish

Material recommended by cab

Polyethylene in food labeling



indoor



tearproof



outdoor

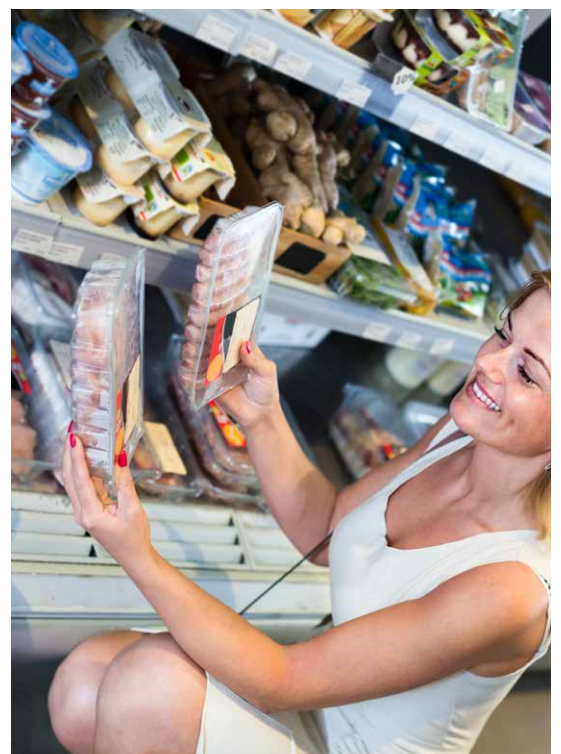


smear-/scratchproof



resistant to humidity

Suitable black ribbons are of resin quality.



For further information see
www.cab.de/en/consumables
 Contact us: etiketten@cab.de

Labelbase - when adhesion and easy removal are targets



Labelbase serves as a basis for labels that are to be removed or exchanged. It can be applied to smooth surfaces, for example on KLT containers. Labels (also permanently adherent) applied to Labelbase can be removed quickly without residues at any time. A label may also be re-applied as often as required. No printing on Labelbase!

cab materials

Paper as standard



indoor

Polypropylene in outdoor applications



indoor



tearproof



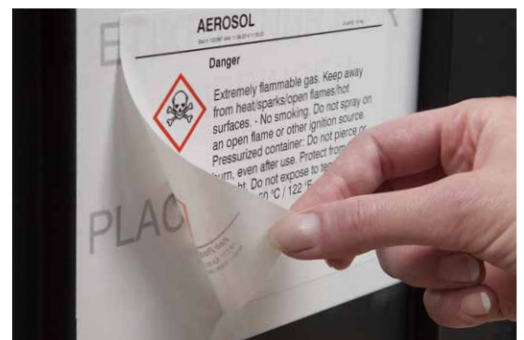
outdoor



smear-/scratchproof

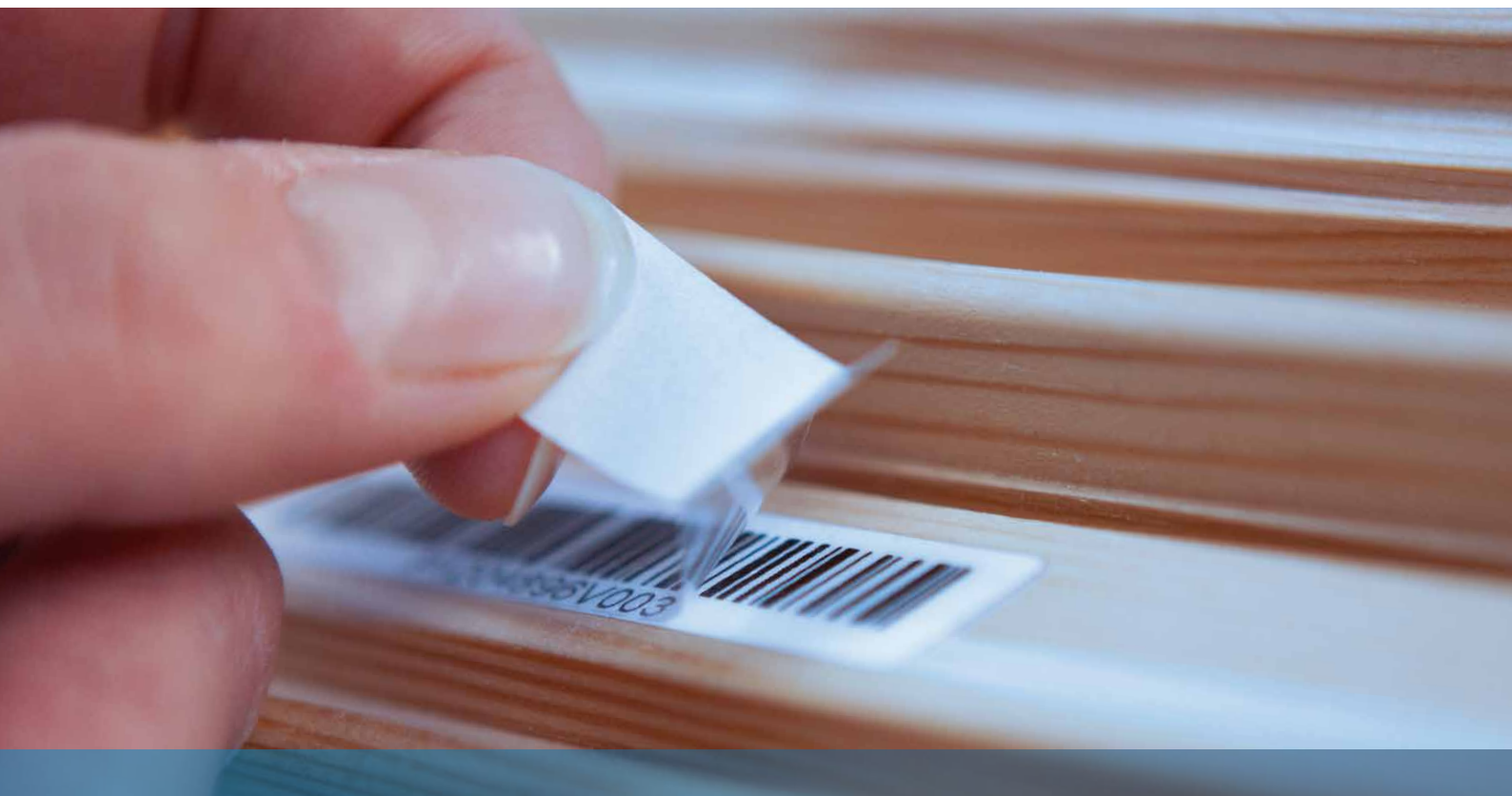


resistant to humidity



For further information see
www.cab.de/en/consumables
 Contact us: etiketten@cab.de

Varnishing protection



In addition to identification, labels may also protect, for example in window and door construction. Two-layer laminate protects labels applied to milled wooden profiles during multiple varnishing. The lower layer of the laminate remains on the base label (the information carrier) as protection, the upper layer can be removed after the finishing with the help of a tab.

Materials recommended by cab

Polypropylene base labels

- | | |
|---|--|
|  indoor |  tearproof |
|  outdoor |  smear-/scratchproof |
|  resistant to humidity |  resistant to chemicals |

Polypropylene two-layer laminate

- | | |
|---|--|
|  indoor |  tearproof |
|  outdoor |  smear-/scratchproof |
|  resistant to humidity |  resistant to chemicals |

Suitable black ribbons are of resin quality.



Germany
cab Produkttechnik GmbH & Co KG
Karlsruhe
Phone +49 721 6626 0
www.cab.de

France
cab Technologies S.à.r.l.
Niedermörsen
Phone +33 388 722501
www.cab.de/fr

USA
cab Technology, Inc.
Chelmsford, MA
Phone +1 978 250 8321
www.cab.de/us

Mexico
cab Technology, Inc.
Juárez
Phone +52 656 682 4301
www.cab.de/es

Taiwan
cab Technology Co., Ltd.
Taipei
Phone +886 (02) 8227 3966
www.cab.de/tw

China
cab (Shanghai) Trading Co., Ltd.
Shanghai
Phone +86 (021) 6236 3161
www.cab.de/cn

Singapore
cab Singapore Pte. Ltd.
Singapore
Phone +65 6931 9099
www.cab.de/en

South Africa
cab Technology (Pty) Ltd.
Randburg
Phone +27 11 886 3580
www.cab.de/za

cab // 820 distribution and service partners in more than 80 countries

