

Present Module

5100A

Operator's Manual for the following products

Part.-Nr.	Description	Type
5949334	Present Module	5100

Edition: 12/2008 - Art.-Nr. 9008551

Copyright

This documentation as well as translation hereof are property of cab Produkttechnik GmbH & Co. KG.

The replication, conversion, duplication or divulgement of the whole manual or parts of it for other intentions than its original intended purpose - in particular the procurement of spare parts for products sold by cab - demand the previous written authorization by cab.

Trademark

Centronics® is a registered trademark of the Data Computer Corporation.

Microsoft® is a registered trademark of the Microsoft Corporation.

Windows 2000®, 2003®, XP® are registered trademarks of the Microsoft Corporation.

TrueType™ is a registered trademark of Apple Computer, Inc.

Editor

Regarding questions or comments please contact cab Produkttechnik GmbH & Co. KG.

Topicality

Due to the constant further development of our products discrepancies between documentation and product can occur. Please check www.cab.de for the latest update.

Terms and conditions

Deliveries and performances are effected under the General conditions of sale of cab.

Germany

cab Produkttechnik
GmbH & Co KG
Postfach 1904
D-76007 Karlsruhe
Wilhelm-Schickard-Str. 14
D-76131 Karlsruhe
Telefon +49 721 6626-0
Telefax +49 721 6626-249
www.cab.de
info@cab.de

France

cab technologies s.a.r.l.
F-67350 Niedermodern
Téléphone +33 388 722 501
www.cab.de
info@cab-technologies.fr

España

cab España S.L.
E-08304 Montaró (Barcelona)
Teléfono +34 937 414 605
www.cab.de
info@cabsi.com

USA

cab Technology Inc.
Tyngsboro MA, 01879
Phone +1 978 649 0293
www.cabtechn.com
info@cabtechn.com

South Afrika

cab Technology (Pty.) Ltd.
2125 Randburg
Phone +27 11-886-3580
www.cab.de
info@cabtechn.co.za

Asia 亞洲分公司

希愛比科技股份有限公司
cab Technology Co, Ltd.
台灣台北縣板橋市
民生路一段33號十九樓之一
Panchiao 220,
Taipei, Taiwan, R.O.C.
電話 Phone +886 2 2950 9185
網址 www.cabasia.net
詢問 cabasia@cabgmbh.com

Representatives in other countries on request.

1	Introduction	4
1.1	Instructions	4
1.2	Intended Use	4
1.3	Safety Instructions	5
1.4	Environment	5
2	Product Description	6
2.1	Function	6
2.2	Technical Specification	6
2.3	Device Overview	7
3	Starting Up	8
3.1	Delivery Contents	8
3.2	Mounting	8
3.2.1	Mounting Present Module on the Base Plate	8
3.2.2	Mount the Profile to use the system on a Stand 1600	9
3.2.3	Mounting the Printer	9
3.3	Loading the material	10
4	Adjustments	10

1.1 Instructions

Important information and instructions in this documentation are designated as follows:

**Danger!**

Draws your attention to an exceptionally grave, impending danger to your health or life.

**Warning!**

Indicates a hazardous situation that could lead to injuries or material damage.

**Attention!**

Draws attention to possible dangers, material damage or loss of quality.

**Notice!**

Gives you tips. They make a working sequence easier or draw attention to important working processes.

**Environment!**

Gives you tips on protecting the environment.



Handling instruction



Reference to section, position, illustration number or document.



Option (accessories, peripheral equipment, special fittings).

1.2 Intended Use

- The device is manufactured in accordance with the current technological status and the recognized safety rules. However, danger to the life and limb of the user or third parties and/or damage to the device and other tangible assets can arise during use.
- The device may only be used for its intended purpose and if it is in perfect working order, and it must be used with regard to safety and dangers as stated in the operating manual.
- The device is intended exclusively for present suitable materials that have been approved by the manufacturer. Any other use or use going beyond this shall be regarded as improper use. The manufacturer/supplier shall not be liable for damage resulting from unauthorized use; the user shall bear the risk alone.
- Usage for the intended purpose also includes complying with the operating manual, including the manufacturer's maintenance recommendations and specifications.

**Notice!**

The complete documentation is currently in the Internet.

1.3 Safety Instructions

- The device may only be used in a dry environment, do not expose it to moisture (sprays of water, mists, etc.).



Warning!

During operation, the rotating direction changer axle it is freely accessible. When working on the device wear tightly fitting clothes and tie up long hair. Loosely hanging pieces or long hair can get caught in parts of the device.



Warning!

Do not try to manipulate or repair parts they are not described in the manuals of the external rewinder or the printer.

1.4 Environment



Obsolete devices contain valuable recyclable materials that should be sent for recycling.

- Send to suitable collection points, separately from residual waste.
- Send the parts for recycling.

2.1 Function

Das Spendemodul 5100A ist eine mechanische Vorrichtung zur Montage mit einem Drucker der A oder A+ Serie. Das Spendemodul ist für die Integration in Produktionsabläufe konzipiert. Hierbei erfolgt die Applikation des Etikettes über das Aufrollen des gespendeten Etikettes mit Hilfe der Andruckwalze. Die Steuerung des Druckers mit der Konfiguration Drucker-Spendemodul setzt die Verwendung eines Spendeadapters PS5 voraus.

2.2 Technical Specification

Length of label	12 - 2000 mm
Width of label	25 - 116 mm
Length of buffer between print head and dispense edge	350 - 500 mm
Distance lower edge of the printer to application level	90 mm

2.3 Device Overview

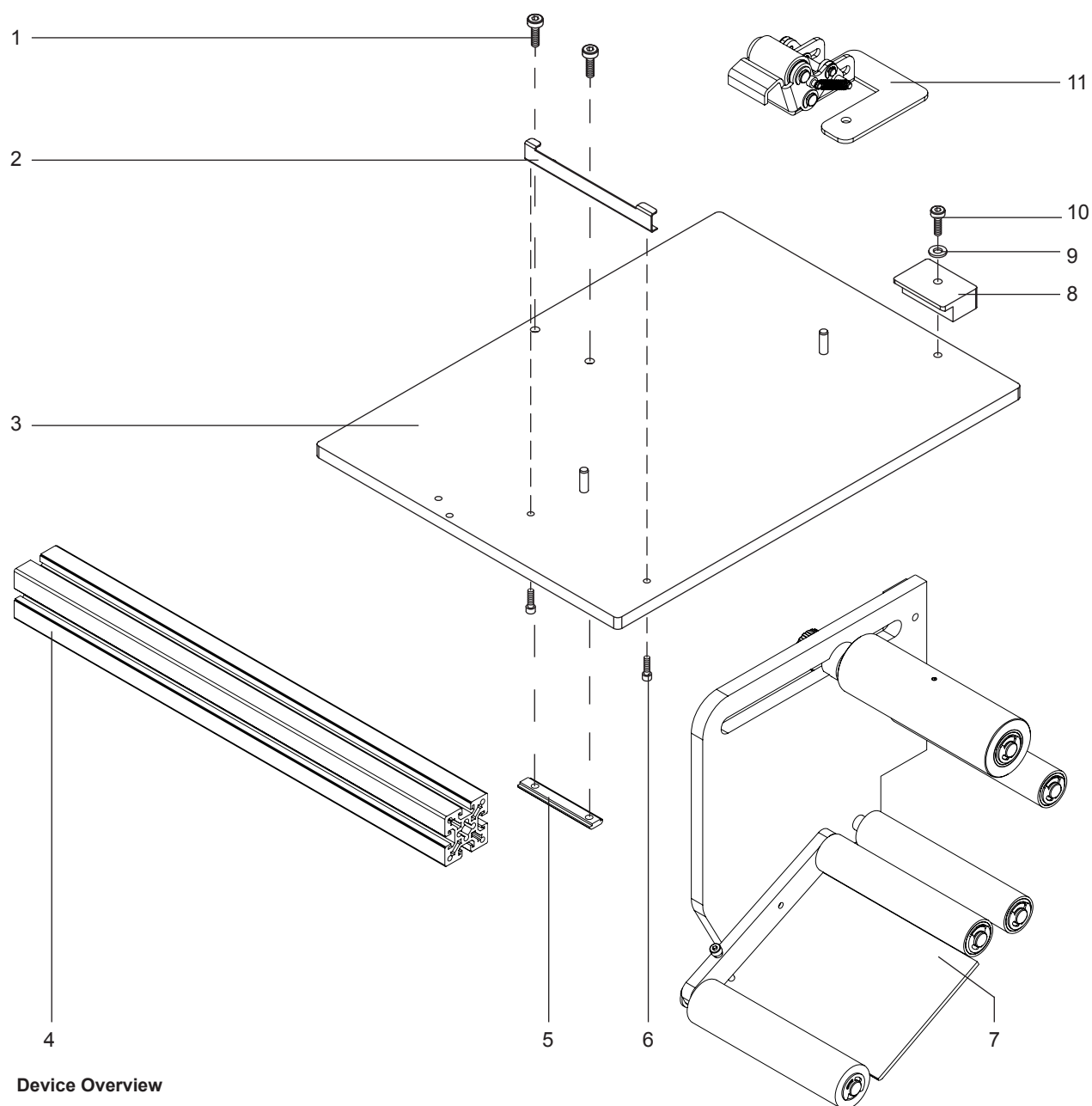


Fig. 1 Device Overview

- 1 Screw DIN912-M6x12
- 2 U-bar
- 3 Base Plate
- 4 Profile
- 5 Sliding Block
- 6 Screw DIN7984-M4x10

- 7 Present Module
- 8 Clamp
- 9 Washer DIN125-A6,4
- 10 Screw DIN7984-M6x25
- 11 Locking System

3.1 Delivery Contents

► Check the external rewinder for damages in transit and totality.

The delivery contents includes:

• Present Module 5100A	1x	
• Screw DIN7984-M6x16	2x	
• Washer DIN125-A6.4	2x	
• Base Plate kpl.	1x	
• U-bar	1x	
• Screw DIN7984-M4x10	2x	
• Clamp	1x	
• Washer DIN125-A6,4	1x	
• Screw DIN7984-M6x25	1x	
• Locking System	1x	
• Profile	1x	
• Sliding Block		1x
• Screw DIN912-M6x12	2x	
• Documentation		



Notice!

Retain packing material for later use !

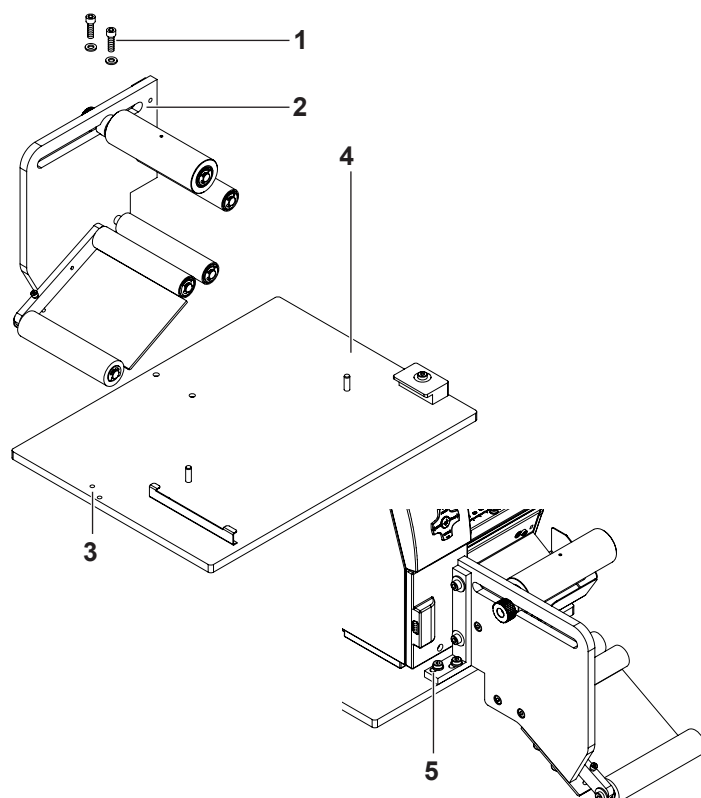
3.2 Mounting

3.2.1 Mounting Present Module on the Base Plate



Notice!

To use the Present Module 5100A it's necessary to install a Pause Adapter PS5 to the printer before. This is a connector and adapter for external sensors to control the process of printing and application the labels.



Printer and Present Module 5100A (2) are linked over a base plate (4)

- Present Module 5100A (2) move to the edge of the base plate (4) that the holes (5) of the mounting bracket are congruent with the holes (3) of the base plate (4).
- Use the delivered screws and washers (1) to fix the Present Module 5100A by base plate.

Fig. 2 Mounting Present Module 5100A

3 Starting Up

9

3.2.2 Mount the Profile to use the system on a Stand 1600

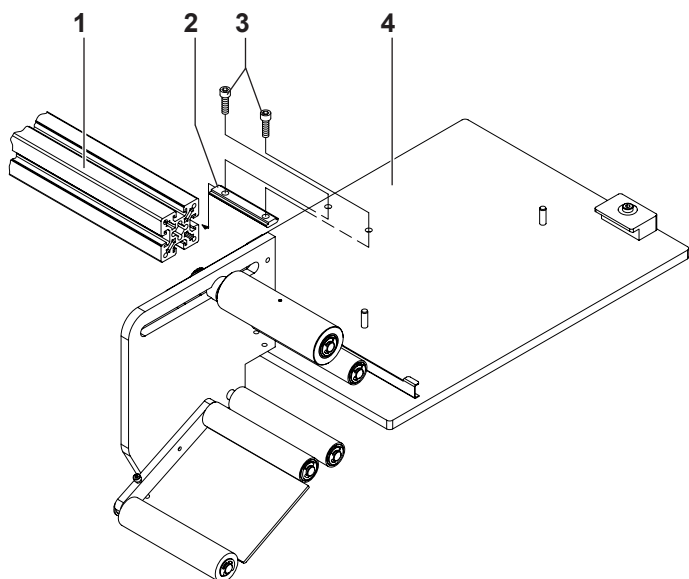


Fig.3 mounting the profile

To use the system of present module - base plate - printer on a Stand 1600 (cab-No.: 5947400) it's essential to mount a profile on the base plate before.

- Put the sliding block (2) into the Profile (1)
- Insert the screws (3) in the holes of the base plate (4)
- Tighten screws (3) on the sliding block (2).
- Mount the profile on the Stand 1600 ▷ Operator's Manual "Stativ 1600"

3.2.3 Mounting the Printer

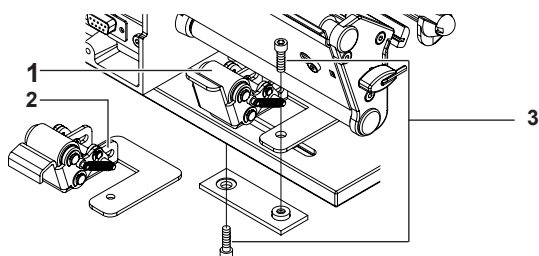


Fig. 4 change locking system

To use the Present Module 5100A it's necessary to change the locking system of the printer.

- Loosening the screws (3)
- Changing the locking system of the printer (1) with the delivered locking system (2)
- Tighten the screws (3)

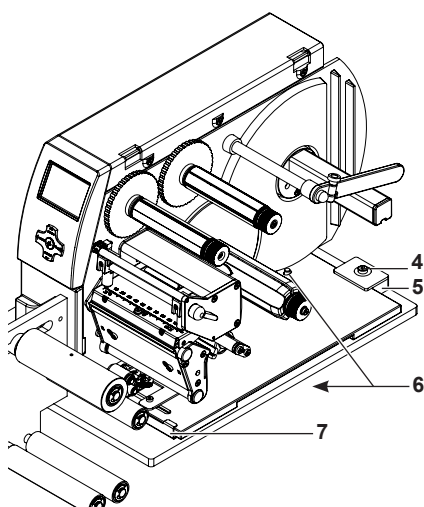


Fig. 5 Mounting printer at base plate

- Loosen the screw (4) at the fixing bracket (5)
- Move the base plate of the printer under the profile (7)
- The pins (6) at the base plate are installed to fix the printer in the finished position. Use the holes in the base plate of the printer.
- Tighten the fixing bracket (5) at the base plate by screw (4).

3.3 Loading the material

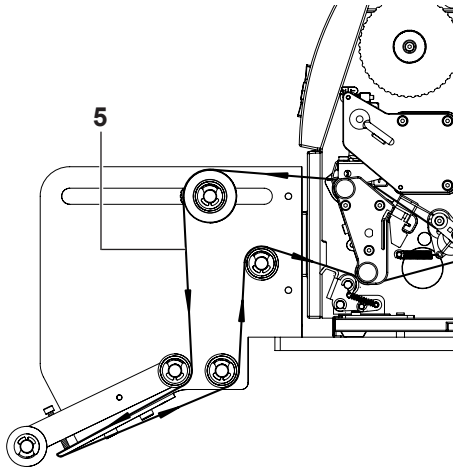


Fig. 6 Material way - Present Module 5100A

- Load the material like the Operator's Manual of the printer.
- Feed the label strip out of the printer until there is enough material to reach the internal rewinder of the printer.
- Remove all labels from the outstanding liner (5).
- Load the liner like pictured in Figure 4
- Feed the liner to the internal rewinder like described in the Operator's Manual of the printer.

4 Adjustments

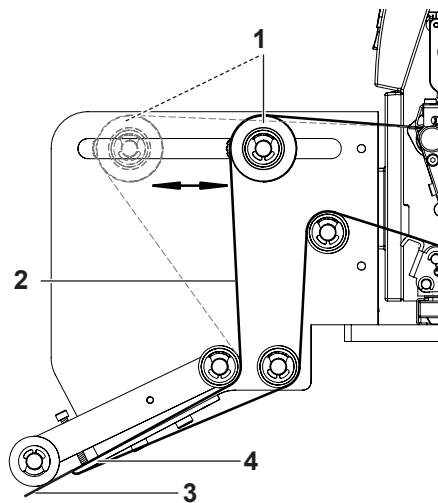


Fig.7 Dispense position adjusting

- Release a FEED on the printer. That way the next label to be printed is positioned at the print position.
- Loosen the rewind roller (1) by turning the knurled knob.
- Slide the rewind roller so, that the label (3) to be dispensed is peeled off from the liner (2) a little bit. The front edge of the label should be gone beyond the dispense edge (4) of the Present Module 5100A maximum 5 mm.

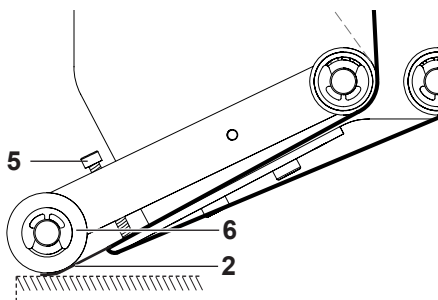


Bild 8 Pinch roller adjusting

The pinch roller (6) should support the taking of the label by the product to be labelled. It should be adjusted so that it touches the label slightly.

- Adjust the screw (5) that the pinch roller (6) would touch the label (2) to be dispensed slightly.