

Spare Parts List



Label Printer

A4+M

Made in Germany

for the following products

Family	Type
A+M	A4+M/300
	A4+M/600

Edition: 10/2020 - Part No. 9008690

Copyright

This documentation as well as translation hereof are property of cab Produkttechnik GmbH & Co. KG.

The replication, conversion, duplication or divulgement of the whole manual or parts of it for other intentions than its original intended purpose - in particular the procurement of spare parts for products sold by cab – demand the previous written authorisation by cab.

Editor

Regarding questions or comments please contact cab Produkttechnik GmbH & Co. KG.

Topicality

Due to the constant further development of our products discrepancies between documentation and product can occur.

Please check www.cab.de for the latest update.

Terms and conditions

Deliveries and performances are effected under the "General conditions of sale of cab"

Table of Contents

1	Covering	3
2	Control Panel, Power Supply, PCB CPU	4
3	Printhead Assembly	5
4	Print Roller Assembly, Label Sensor	6
5	Main Drive, Roll Retainer	7
6	Transfer Ribbon Winders	8
7	Spare Parts Register	9
8	Packaging/Accessories	10

Germany
cab Produkttechnik GmbH & Co KG
 Karlsruhe
 Phone +49 721 6626 0
www.cab.de

USA
cab Technology, Inc.
 Chelmsford, MA
 Phone +1 978 250 8321
www.cab.de/us

Taiwan
cab Technology Co., Ltd.
 Taipei
 Phone +886 (02) 8227 3966
www.cab.de/tw

China
cab (Shanghai) Trading Co., Ltd.
 Guangzhou
 Phone +86 (020) 2831 7358
www.cab.de/cn

France
cab Technologies S.à.r.l.
 Niedermodern
 Phone +33 388 722501
www.cab.de/fr

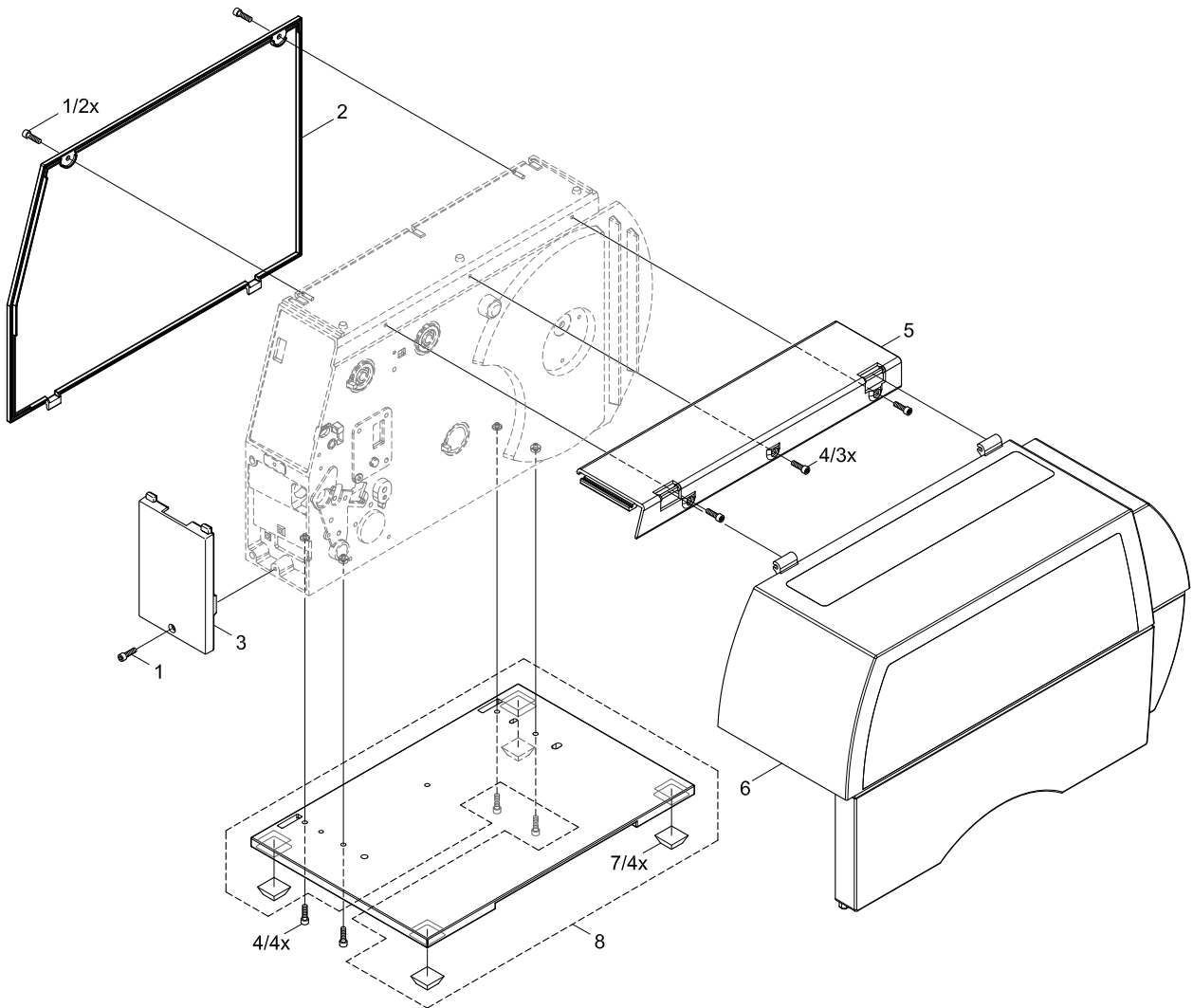
Mexico
cab Technology, Inc.
 Juárez
 Phone +52 656 682 4301
www.cab.de/es

China
cab (Shanghai) Trading Co., Ltd.
 Shanghai
 Phone +86 (021) 6236 3161
www.cab.de/cn

South Africa
cab Technology (Pty) Ltd.
 Randburg
 Phone +27 11 886 3580
www.cab.de/za

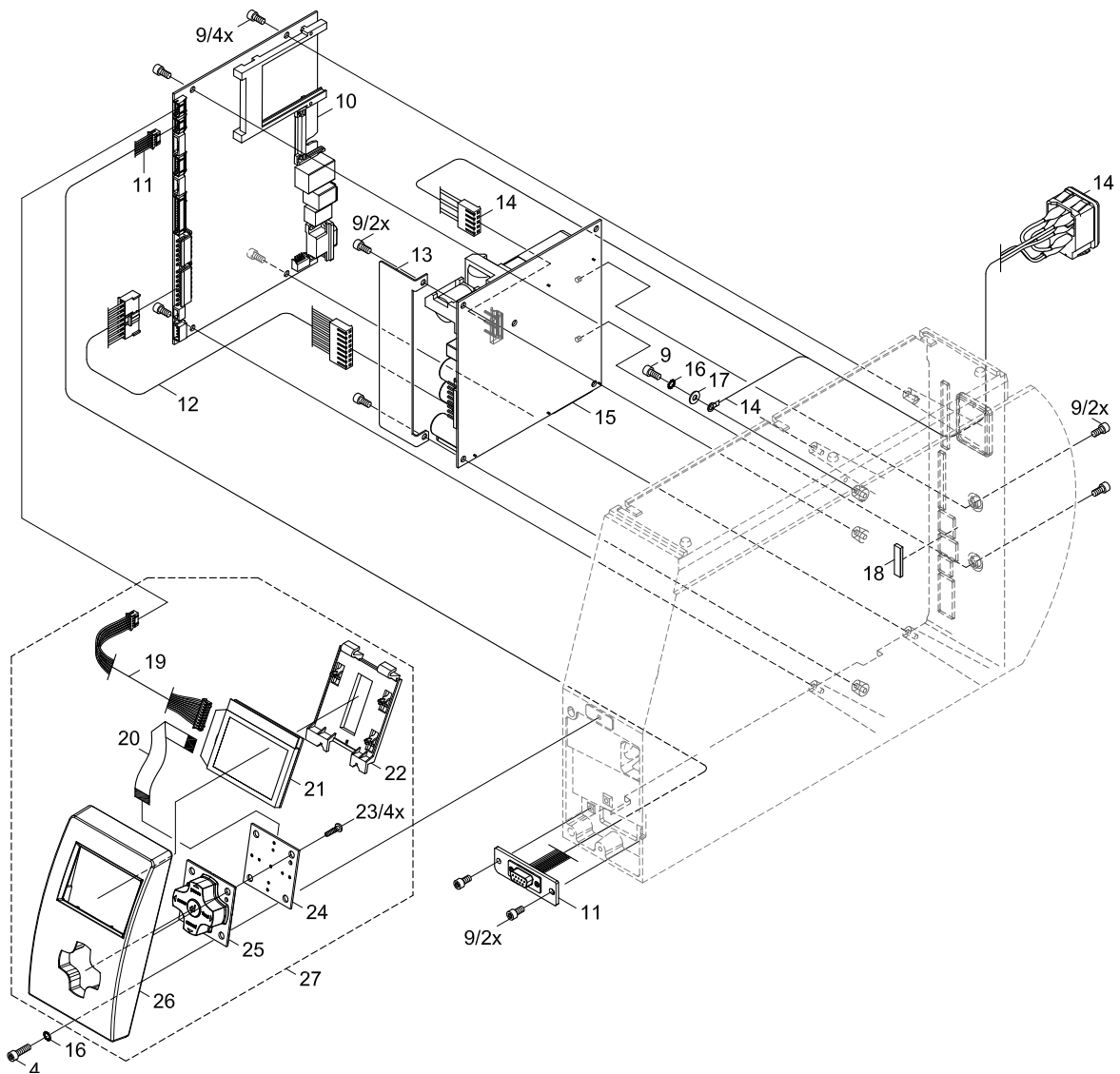
1 Covering

No	Part No.	Description	PU	Note	Serial No.	
					from	to
1	5902241.001	Screw DIN7984-M4x10	10			
2	5954399.001	Cover Plate	1			
3	5943004.001	Cover	1			
4	5902565.001	Screw DIN7984-M4x10	10			
5	5943113.001	Cover	1			
6	5948656.001	Cover	1			
7	5905652.001	Foot	1			
8	5943083.001	Baseplate	1			



No	Part No.	Description	PU	Note	Serial No.	
					from	to
4	5902565.001	Screw DIN7984-M4x10	10			
9	5902571.001	Screw DIN7984-M4x6	10			
10	5551118.001	CPU X2	1			
11	5954095.001	Cable Periphery	1			
12	5943107.001	Cable Power Supply	1			
13	5954179.001	Cover Plate	1			
14	5955046.001	Power Input Module	1			
15	5956220.001	Power Supply	1			
16	5903011.001	Toothed Washer DIN6797-A4.3	10			
17	5903003.001	Washer DIN125-A4.3	10			

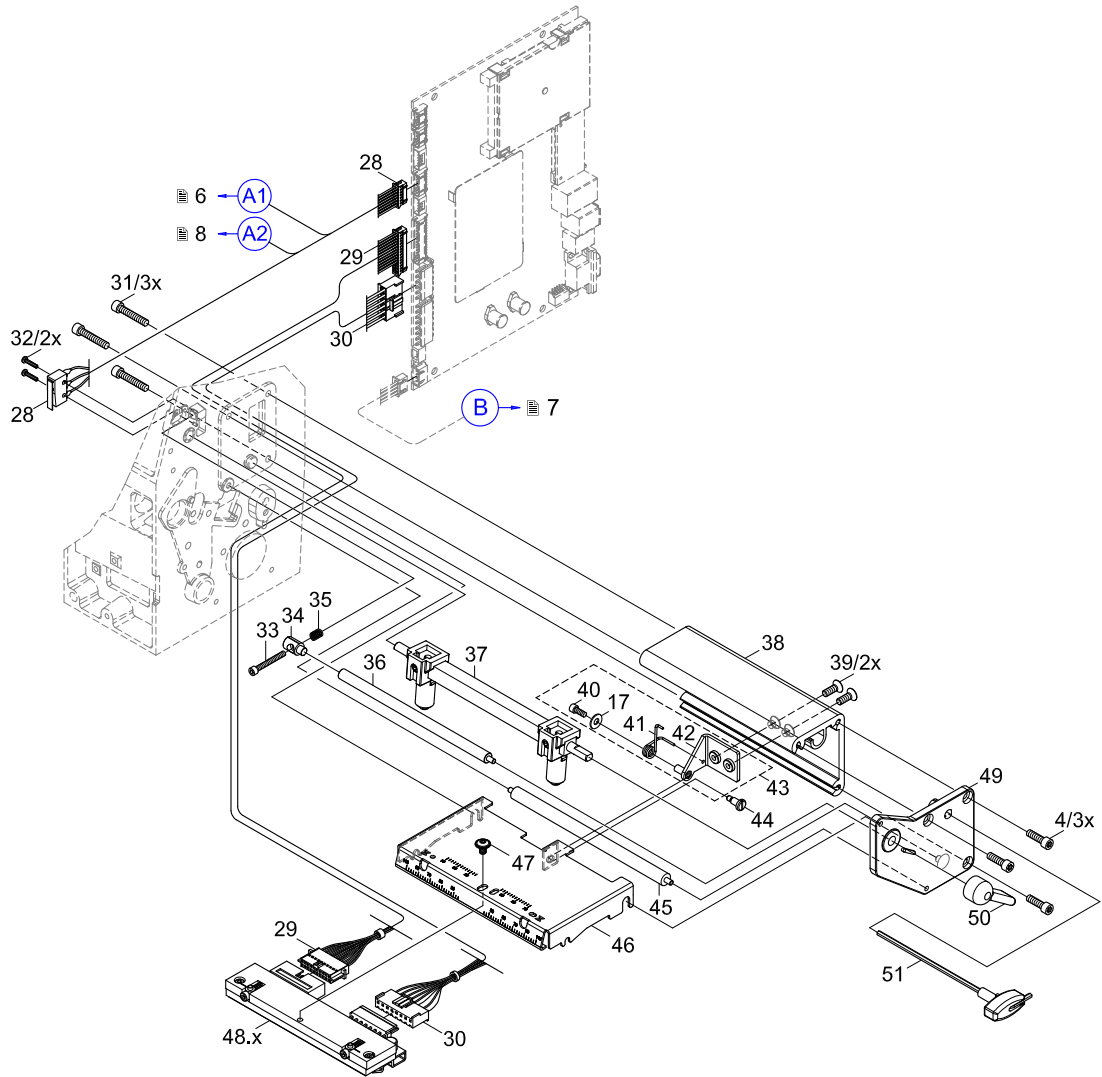
No	Part No.	Description	PU	Note	Serial No.	
					from	to
18	5954132.001	Strip	5			
19	5954097.001	Cable Control Panel	1			
20	5954027.001	Cable Control Panel	1			
21	5540868.001	LCD Display	1			
22	5954026.001	Holder	1			
23	5902414.001	Screw EJOT-PT-K30x12	10			
24	5955034.001	PCB Navi Button	1			
25	5540930.001	Navigator Pad	1			
26	5954025.001	Control Panel Cover	1			
27	5954020.001	Control Panel	1			



3 Printhead Assembly

No	Part No.	Description	PU	Note	Serial No.	
					from	to
4	5902565.001	Screw DIN7984-M4x10	10			
17	5903003.001	Washer DIN125-A4.3	10			
28	5954099.001	Cable Sensors	1			
29	5954067.001	Cable Printhead	1			
30	5954066.001	Cable Printhead	1			
31	5902572.001	Screw DIN7984 M4x16	10			
32	5902457.001	Screw DIN7985-M2x10	10			
33	5902011.001	Screw DIN912-M3x20	10			
34	5954060.001	Pivot Arm	1			
35	5906136.001	Spring	5			
36	5977536.001	Roller Ribbon	1			
37	5954070.001	Printhead Locking System	1			
38	5959741.001	Profile	1			
39	5902573.001	Screw DIN7991-M4x8	10			

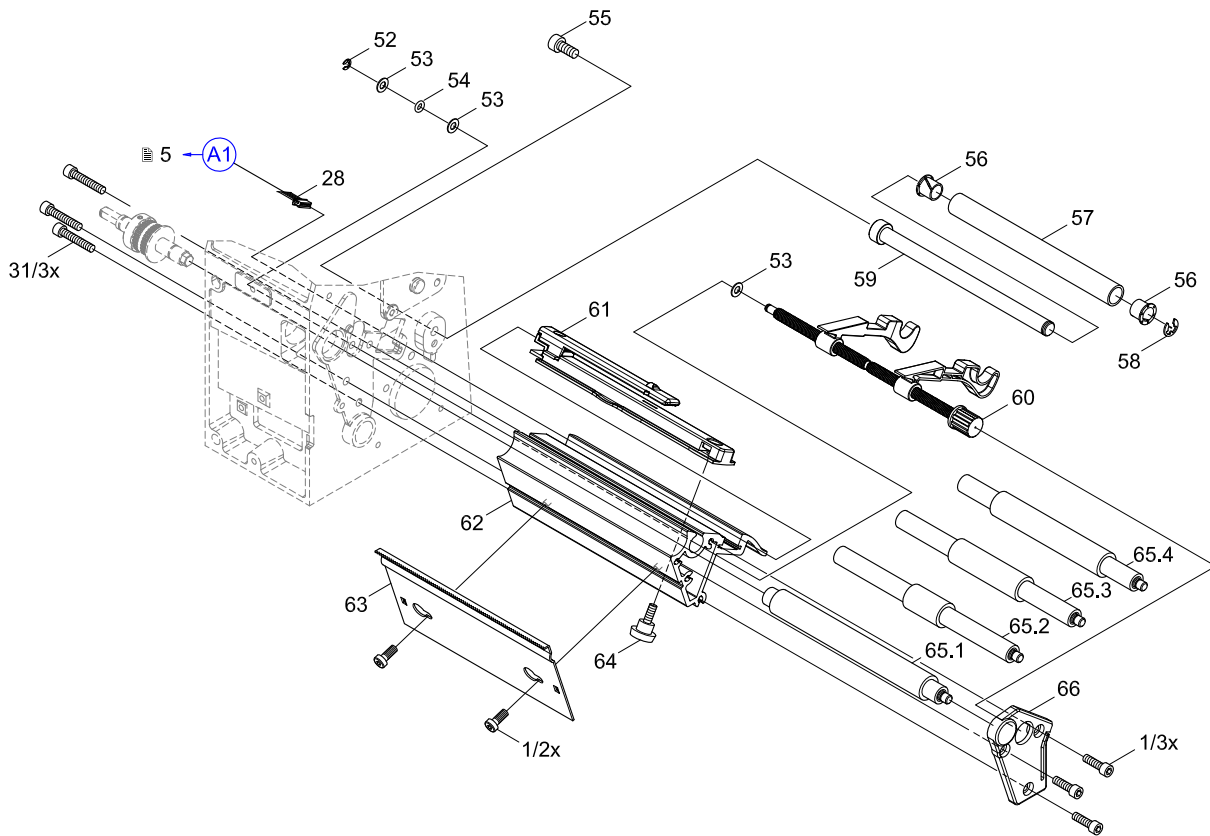
No	Part No.	Description	PU	Note	Serial No.	
					from	to
40	5902007.001	Screw DIN912-M3x6	10			
41	5954057.001	Spring	1			
42	5954134.001	Bracket	1			
43	5954135.001	Bracket	1			
44	5902145.001	Screw DIN923-M3x6	10			
45	5954044.001	Roller	1			
46	5958589.001	Printhead Mounting Bracket	1			
47	5902817.001	Screw sim. ISO7380-M4x6	10			
48.1	5954072.001	Printhead 4/300	1	300		
48.2	5954077.001	Printhead 4/600	1	600		
49	5959742.001	Side Plate	1			
50	5954059.001	Lever	1			
51	5946113.001	Allen Key	1			



No	Part No.	Description	PU	Note	Serial No.	
					from	to
1	5902241.001	Screw DIN7984-M4x10	10			
28	5954099.001	Cable Sensors	1			
31	5902572.001	Screw DIN7984 M4x16	10			
52	5903507.001	E-Ring DIN6799-3.2	10			
53	5903090.001	Washer DIN988-4x8x0.5	10			
54	5905570.001	O-Ring 5x1.5	10			
55	5902281.001	Screw DIN7984-M5x12	10			
56	5901124.001	Plastic Bushing	10			
57	5958585.001	Belt Roller	1			
58	5903505.001	E-Ring DIN6799-5	10			
59	5958584.001	Axle	1			

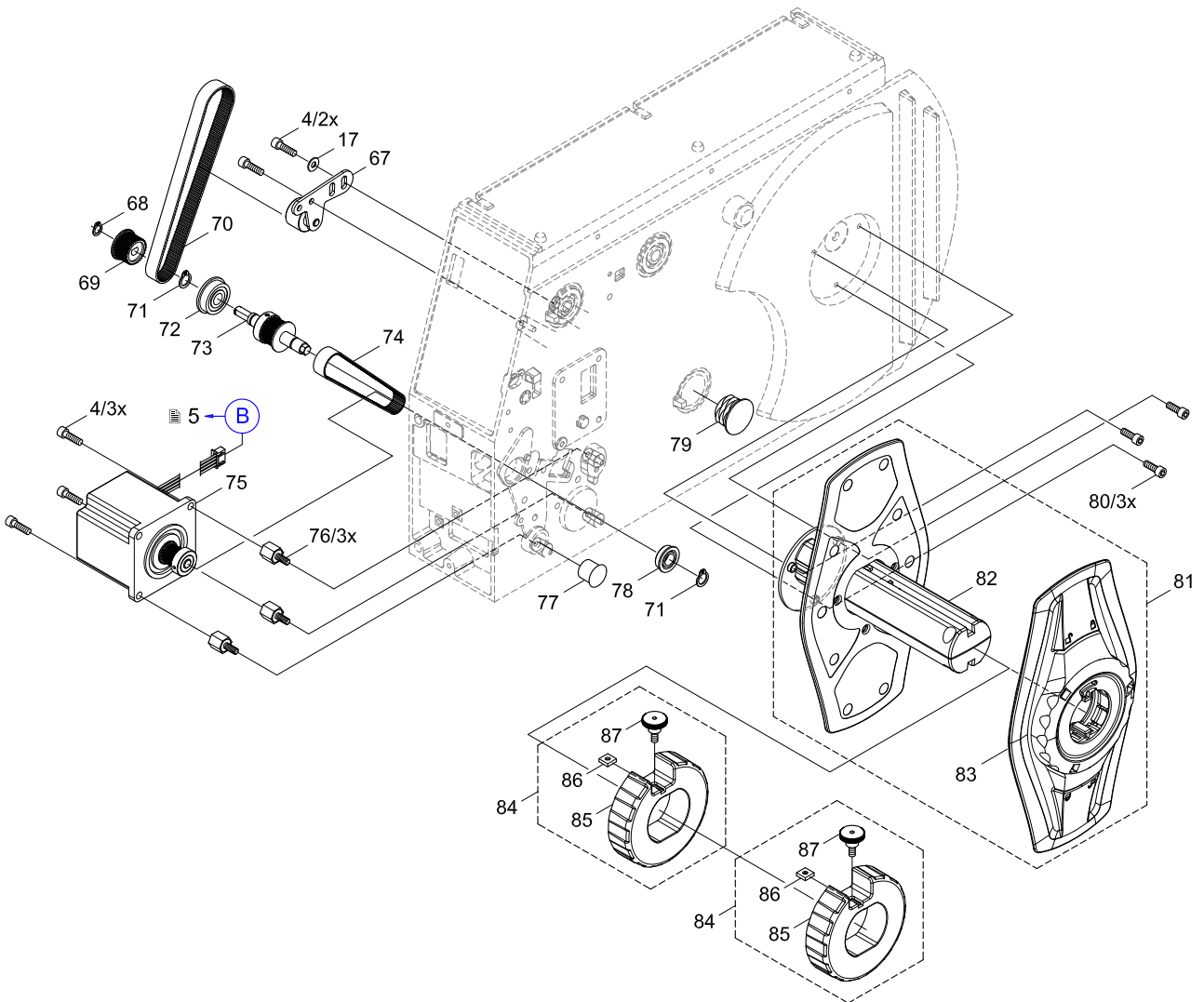
No	Part No.	Description	PU	Note	Serial No.	
					from	to
60	5958580.001	Spindle-M	1			
61	5958670.001	Label Sensor	1			
62	5958575.001	Profile	1			
63	5946244.001	Tear-off Plate TP4	1			
64	5902670.001	Thumbscrew	1			
65.1	5954180.001	Drive Roller DR4	1			
65.2	5953700.001	Drive Roller DR4-M25	1	O		
65.3	5953701.001	Drive Roller DR4-M50	1	O		
65.4	5953702.001	Drive Roller DR4-M80	1	O		
66	5958582.001	Side Plate	1			

Note O Option



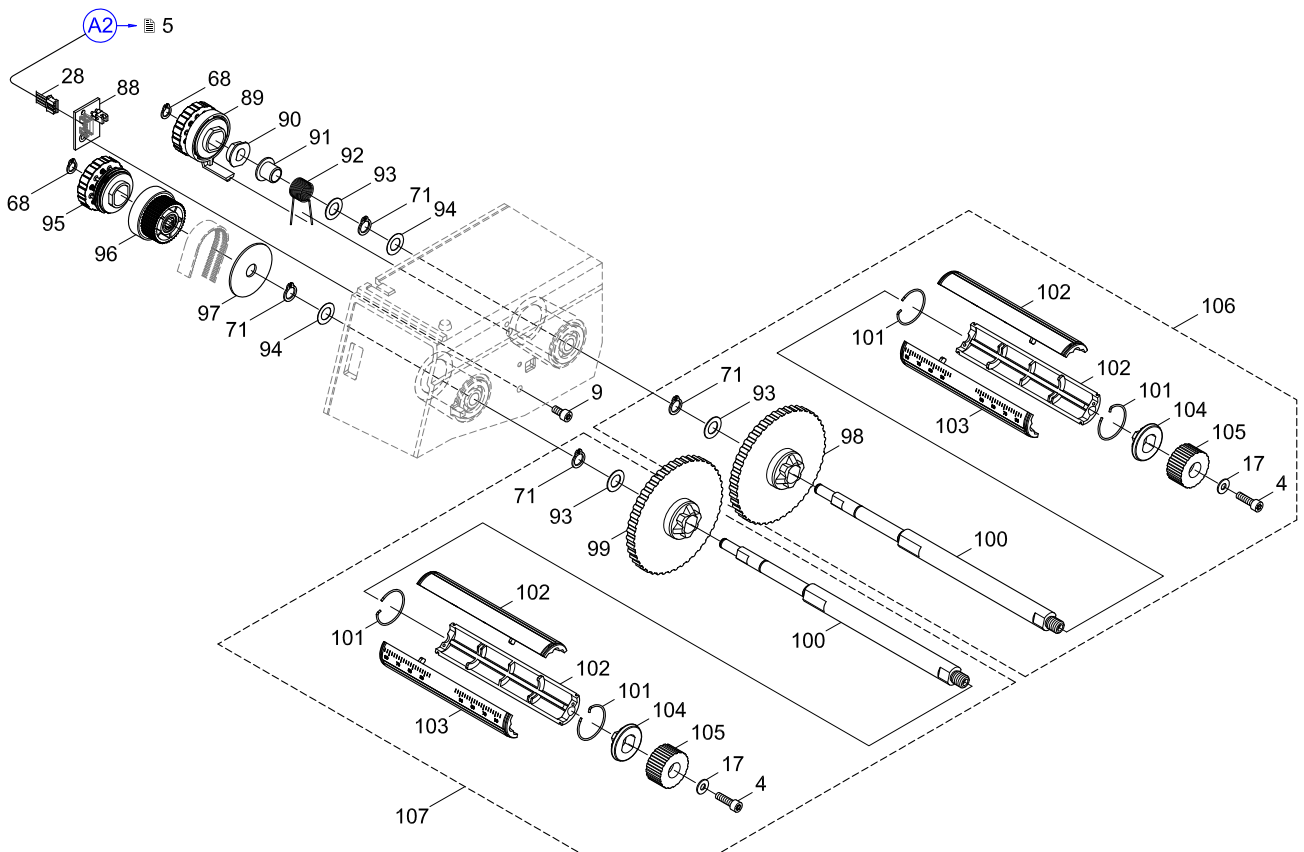
No	Part No.	Description	PU	Note	Serial No.	
					from	to
4	5902565.001	Screw DIN7984-M4x10	10			
17	5903003.001	Washer DIN125-A4.3	10			
67	5954160.001	Belt Tension Bracket	1			
68	5903521.001	Snap Ring DIN471-A6	10			
69	5946238.001	Gear 29	1			
70	5905196.001	Belt 150MXL 037	1			
71	5903516.001	Snap Ring DIN471-8x0.8	10			
72	5901090.001	Ball Bearing DIN625-F608-ZZ	1			
73	5954182.001	Shaft	1			
74	5905649.001	Belt 106MXL 037	1			
75	5946208.001	Stepper Motor	1			
76	5906157.001	Shock Absorber	5			

No	Part No.	Description	PU	Note	Serial No.	
					from	to
77	5905866.001	Stopper 16x0.8	1			
78	5901071.001	Ball Bearing DIN625-F688-ZZ	1			
79	5905699.001	Stopper 25x1	1			
80	5902489.001	Screw DIN7984-M4x8	10			
81	5959580.001	Media Hub M	1			
82	5959601.001	Media Hub	1			
83	5959588.001	Margin Stop	1			
84	5959612.001	Adapter 75	1			
85	5959611.001	Adapter 75	1			
86	8910053.001	Square Nut M4 8mm	10			
87	5959624.001	Knurled Screw	1			



No	Part No.	Description	PU	Note	Serial No.	
					from	to
4	5902565.001	Screw DIN7984-M4x10	10			
9	5902571.001	Screw DIN7984-M4x6	10			
17	5903003.001	Washer DIN125-A4.3	10			
28	5954099.001	Cable Sensors	1			
68	5903521.001	Snap Ring DIN471-A6	10			
71	5903516.001	Snap Ring DIN471-8x0.8	10			
88	5954024.001	Ribbon Sensor	1			
89	5954114.001	Brake	1			
90	5541172.001	Pivot Arm	1			
91	5901123.001	Plastic Bushing	10			
92	5954131.001	Spring	5			
93	5903020.001	Washer DIN988-8x14x0.5	10			
94	5903038.001	Washer DIN988-8x14x0.2	10			

No	Part No.	Description	PU	Note	Serial No.	
					from	to
95	5954113.001	Slipping Clutch	1			
96	5954115.001	Gear 42	1			
97	5903128.001	Washer 35x8.4x1.25	10			
98	5954120.001	Wall Spacer	1			
99	5954112.001	Wall Spacer	1			
100	5954128.001	Axle	1			
101	5954124.001	Snap Ring	10			
102	5954122.001	Shell	1			
103	5958595.001	Shell	1			
104	5954121.001	Cone	1			
105	5943022.001	Knurled Knob	1			
106	5958592.001	Ribbon Supply Hub	1			
107	5958591.001	Ribbon Takeup Hub	1			



7 Spare Parts Register

9

Pos.	Figure/Page						Nr.	Part No.	Description	PU	SPR				Notes	Serial No.	
	from	to	from	to	from	to					from	to					
1		4					21	5540868.001	LCD Display	1	-	-	-	D			
2		4					25	5540930.001	Navigator Pad	1	-	-	-	-			
3						8	90	5541172.001	Pivot Arm	1	-	-	-	-			
4		4					10	5551118.001	CPU X2	1	-	B	C	D			
5						7	78	5901071.001	Ball Bearing DIN625-F688-ZZ	1	-	-	-	-			
6						7	72	5901090.001	Ball Bearing DIN625-F608-ZZ	1	-	-	-	-			
7						8	91	5901123.001	Plastic Bushing	10	-	-	-	-			
8				6			56	5901124.001	Plastic Bushing	10	-	-	-	D			
9			5				40	5902007.001	Screw DIN912-M3x6	10	-	-	-	-			
10			5				33	5902011.001	Screw DIN912-M3x20	10	-	-	-	-			
11			5				44	5902145.001	Screw DIN923-M3x6	10	-	-	-	-			
12	3			6			1	5902241.001	Screw DIN7984-M4x10	10	-	-	-	-			
13				6			55	5902281.001	Screw DIN7984-M5x12	10	-	-	-	-			
14		4					23	5902414.001	Screw EJOT-PT-K30x12	10	-	-	-	-			
15			5				32	5902457.001	Screw DIN7985-M2x10	10	-	-	-	-			
16						7	80	5902489.001	Screw DIN7984-M4x8	10	-	-	-	-			
17	3	4	5			7	8	4	5902565.001	Screw DIN7984-M4x10	10	-	-	-	-		
18		4					8	9	5902571.001	Screw DIN7984-M4x6	10	-	-	-	-		
19			5	6			31	5902572.001	Screw DIN7984 M4x16	10	-	-	-	-			
20			5				39	5902573.001	Screw DIN7991-M4x8	10	-	-	-	-			
21				6			64	5902670.001	Thumbscrew	1	-	-	-	-			
22			5				47	5902817.001	Screw sim. ISO7380-M4x6	10	-	-	-	-			
23		4	5			7	8	17	5903003.001	Washer DIN125-A4.3	10	-	-	-	-		
24		4					16	5903011.001	Toothed Washer DIN6797-A4.3	10	-	-	-	-			
25							8	93	5903020.001	Washer DIN988-8x14x0.5	10	-	-	-	-		
26							8	94	5903038.001	Washer DIN988-8x14x0.2	10	-	-	-	-		
27				6			53	5903090.001	Washer DIN988-4x8x0.5	10	-	-	-	-			
28							8	97	5903128.001	Washer 35x8.4x1.25	10	-	-	-	-		
29				6			58	5903505.001	E-Ring DIN6799-5	10	-	-	-	-			
30				6			52	5903507.001	E-Ring DIN6799-3.2	10	-	-	-	-			
31						7	8	71	5903516.001	Snap Ring DIN471-8x0.8	10	-	-	-	-		
32						7	8	68	5903521.001	Snap Ring DIN471-A6	10	-	-	-	-		
33						7		70	5905196.001	Belt 150MXL 037	1	-	-	C	D		
34				6			54	5905570.001	O-Ring 5x1.5	10	-	-	-	-			
35						7		74	5905649.001	Belt 106MXL 037	1	-	-	C	D		
36	3						7	5905652.001	Foot	1	-	-	-	-			
37						7		79	5905699.001	Stopper 25x1	1	-	-	-	-		
38						7		77	5905866.001	Stopper 16x0.8	1	-	-	-	-		
39			5				35	5906136.001	Spring	5	-	-	-	-			
40						7		76	5906157.001	Shock Absorber	5	-	-	-	-		
41	3						3	5943004.001	Cover	1	-	-	-	-			
42						8	105	5943022.001	Knurled Knob	1	-	-	-	-	D		
43	3						8	5943083.001	Baseplate	1	-	-	-	-			
44		4					12	5943107.001	Cable Power Supply	1	-	-	C	D			
45	3						5	5943113.001	Cover	1	-	-	-	-			
46			5				51	5946113.001	Allen Key	1	-	-	-	-			
47						7		75	5946208.001	Stepper Motor	1	-	-	C	D		
48						7		69	5946238.001	Gear 29	1	-	-	-	-		
49				6			63	5946244.001	Tear-off Plate TP4	1	-	-	-	-			
50	3						6	5948656.001	Cover	1	-	-	-	-			
51				6			65.2	5953700.001	Drive Roller DR4-M25	1	-	-	C	D	O		
52				6			65.3	5953701.001	Drive Roller DR4-M50	1	-	-	C	D	O		
53				6			65.4	5953702.001	Drive Roller DR4-M80	1	-	-	C	D	O		
54		4					27	5954020.001	Control Panel	1	-	-	C	D			
55						8	88	5954024.001	Ribbon Sensor	1	-	-	C	D			
56		4					26	5954025.001	Control Panel Cover	1	-	-	-	-			
57		4					22	5954026.001	Holder	1	-	-	-	-			
58		4					20	5954027.001	Cable Control Panel	1	-	-	C	D			
59			5				45	5954044.001	Roller	1	-	-	-	-			
60			5				41	5954057.001	Spring	1	-	-	-	-			
61			5				50	5954059.001	Lever	1	-	-	-	-			
62			5				34	5954060.001	Pivot Arm	1	-	-	-	-			
63			5				30	5954066.001	Cable Printhead	1	-	-	C	D			

PU Package unit

SPR Recommendation

A - wearing parts and accessories

B - recommended spare parts for quick repair

C - recommended spare parts for distributors

D - recommended spare parts for central stores

Pos.	Figure/Page					Nr.	Part No.	Description	PU	SPR					Notes	Serial No.	
																from	to
64			5			29	5954067.001	Cable Printhead	1	-	-	C	D				
65			5			37	5954070.001	Printhead Locking System	1	-	-	-	-				
66			5			48.1	5954072.001	Printhead 4/300	1	A	B	C	D	300			
67			5			48.2	5954077.001	Printhead 4/600	1	A	B	C	D	600			
68		4				11	5954095.001	Cable Periphery	1	-	-	-	-				
69		4				19	5954097.001	Cable Control Panel	1	-	-	-	D				
70			5	6		8	28	5954099.001	Cable Sensors	1	-	-	-	-			
71						8	99	5954112.001	Wall Spacer	1	-	-	-	-			
72						8	95	5954113.001	Slipping Clutch	1	-	B	C	D			
73						8	89	5954114.001	Brake	1	-	B	C	D			
74						8	96	5954115.001	Gear 42	1	-	-	-	-			
75						8	98	5954120.001	Wall Spacer	1	-	-	-	-			
76						8	104	5954121.001	Cone	1	-	-	-	D			
77						8	102	5954122.001	Shell	1	-	-	-	D			
78						8	101	5954124.001	Snap Ring	10	-	B	C	D			
79						8	100	5954128.001	Axle	1	-	-	-	-			
80						8	92	5954131.001	Spring	5	-	-	-	-			
81		4				18	5954132.001	Strip	5	-	-	-	-				
82			5			42	5954134.001	Bracket	1	-	-	-	-				
83			5			43	5954135.001	Bracket	1	-	-	-	-				
84					7	67	5954160.001	Belt Tension Bracket	1	-	-	-	-				
85		4				13	5954179.001	Cover Plate	1	-	-	-	-				
86				6		65.1	5954180.001	Drive Roller DR4	1	A	B	C	D				
87					7	73	5954182.001	Shaft	1	-	-	-	-				
88	3					2	5954399.001	Cover Plate	1	-	-	-	-				
89		4				24	5955034.001	PCB Navi Button	1	-	-	C	D				
90		4				14	5955046.001	Power Input Module	1	-	-	-	-				
91		4				15	5956220.001	Power Supply	1	-	B	C	D				
92				6		62	5958575.001	Profile	1	-	-	-	-				
93				6		60	5958580.001	Spindle-M	1	-	-	-	-				
94				6		66	5958582.001	Side Plate	1	-	-	-	-				
95				6		59	5958584.001	Axle	1	-	-	-	-				
96				6		57	5958585.001	Belt Roller	1	-	-	-	-				
97			5			46	5958589.001	Printhead Mounting Bracket	1	-	-	-	-				
98					8	107	5958591.001	Ribbon Takeup Hub	1	-	-	-	-				
99					8	106	5958592.001	Ribbon Supply Hub	1	-	-	-	-				
100					8	103	5958595.001	Shell	1	-	-	-	D				
101				6		61	5958670.001	Label Sensor	1	-	-	C	D				
102					7	81	5959580.001	Media Hub M	1	-	-	-	-				
103					7	83	5959588.001	Margin Stop	1	-	-	C	D				
104					7	82	5959601.001	Media Hub	1	-	-	-	-				
105					7	85	5959611.001	Adapter 75	1	-	-	-	-				
106					7	84	5959612.001	Adapter 75	1	-	-	-	-				
107					7	87	5959624.001	Knurled Screw	1	-	-	-	-				
108			5			38	5959741.001	Profile	1	-	-	-	-				
109			5			49	5959742.001	Side Plate	1	-	-	-	-				
110			5			36	5977536.001	Roller Ribbon	1	-	-	-	-				
111					7	86	8910053.001	Square Nut M4 8mm	10	-	-	-	-				

8 Packaging/Accessories

Pos.	Figure/Page					Nr.	Part No.	Description	PU	SPR					Notes	Serial No.	
																from	to
112						-	5550611.001	Power Cable Type E+F	1	-	-	-	-				
113						-	5901655.001	Cable USB	1	-	-	-	-				
114						-	9109292.001	Packaging	1	-	-	-	-				

PU Package unit

SPR Recommendation

A - wearing parts and accessories

B - recommended spare parts for quick repair

C - recommended spare parts for distributors

D - recommended spare parts for central stores