

Spare Parts List



Label Printer

A2+

Made in Germany

2 Spare parts list for the following products

2

Family	Type	
A+	A2+/300	A2+/300P
	A2+/600	A2+/600P

Edition: 04/2017 - Part No. 9008766

Copyright

This documentation as well as translation hereof are property of cab Produkttechnik GmbH & Co. KG.

The replication, conversion, duplication or divulgement of the whole manual or parts of it for other intentions than its original intended purpose - in particular the procurement of spare parts for products sold by cab – demand the previous written authorisation by cab.

Editor

Regarding questions or comments please contact
cab Produkttechnik GmbH & Co. KG.

Topicality

Due to the constant further development of our products discrepancies between documentation and product can occur.
Please check www.cab.de for the latest update.

Terms and conditions

Deliveries and performances are effected under the "General conditions of sale of cab"

Table of Contents

1	Chassis, Cover	3
2	Control Panel, Power Supply, PCB CPU	4
3	Printhead Assembly	5
4	Print Roller Assembly, Label Sensor	6
5	Main Drive, Roll Retainer	7
6	Transfer Ribbon Winders	8
7	Internal Rewinder	9
8	Spare Parts Register	10
9	Packaging/Accessories	12

Germany

cab Produkttechnik
GmbH & Co KG
Postfach 1904
D-76007 Karlsruhe
Wilhelm-Schickard-Str. 14
D-76131 Karlsruhe
Telefon +49 721 6626-0
Telefax +49 721 6626-249
www.cab.de
info@cab.de

France

cab technologies s.a.r.l.
F-67350 Niedermodern
Téléphone +33 388 722 501
www.cab.de/fr
info.fr@cab.de

USA

cab Technology Inc.
Tyngsboro MA, 01879
Phone +1 978 649 0293
www.cab.de/us
info.us@cab.de

Asia 亚洲

cab Technology Co., Ltd.
希愛比科技股份有限公司
Junghe, Taipei, Taiwan
Phone +886 2 8227 3966
www.cab.de/tw
info.asia@cab.de

China 中国

cab (Shanghai) Trading Co., Ltd.
乾博(上海)贸易有限公司
Phone +86 21 6236-3161
www.cab.de/cn
info.cn@cab.de

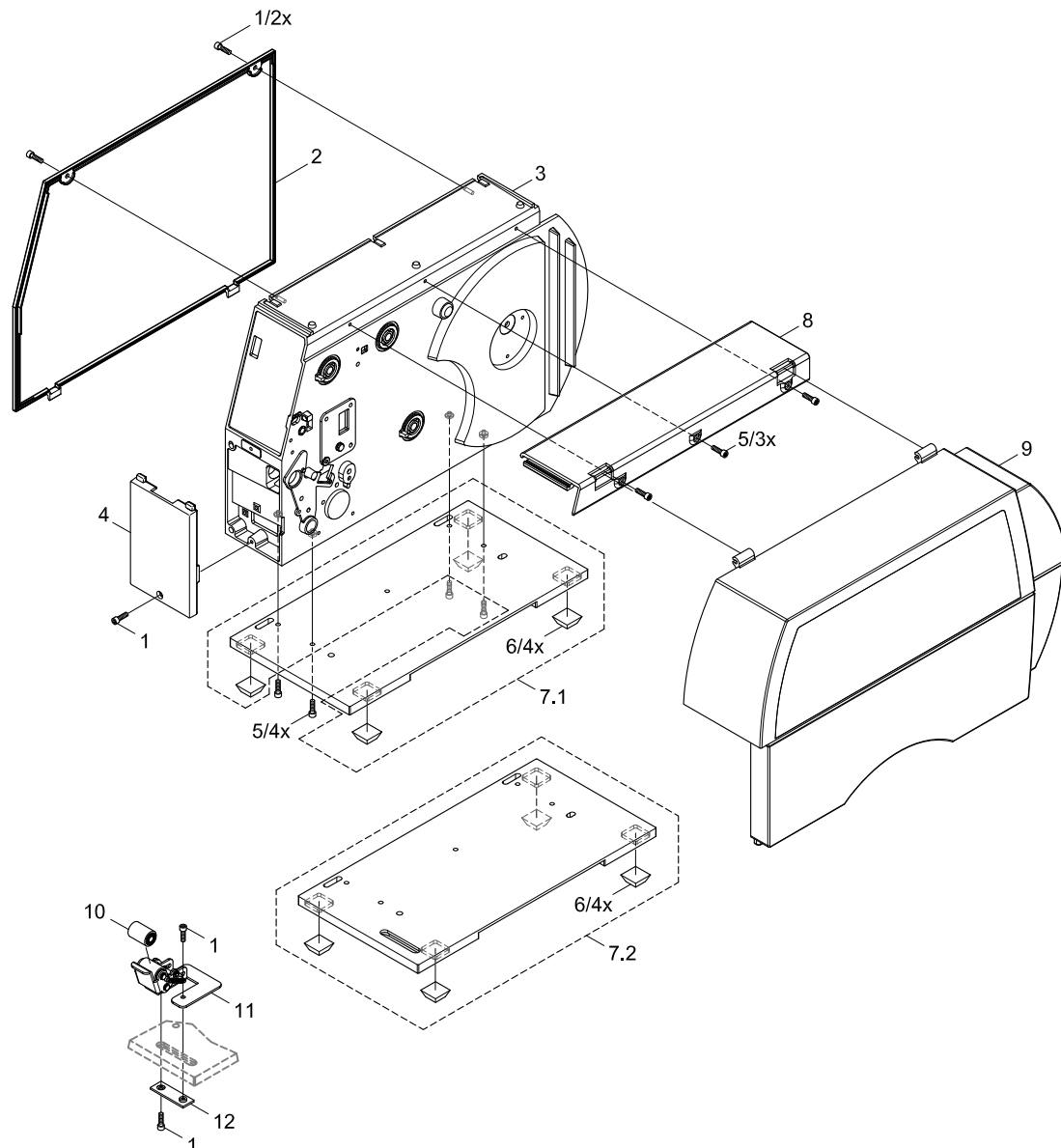
Representatives in other countries on request

1 Chassis, Cover

No	Part No.	Description	PU	Note	Serial No.	
					from	to
1	5902241.001	Screw DIN7984-M4x10	10			
2	5954399.001	Cover Plate	1			
3.1	5954009.001	Chassis	1	a		
3.2	5958778.001	Chassis	1	b		
3.3	5958779.001	Chassis	1	c		
4	5943004.001	Cover	1	a		
5	5902565.001	Screw DIN7984-M4x10	10			
6	5905652.001	Foot	5			

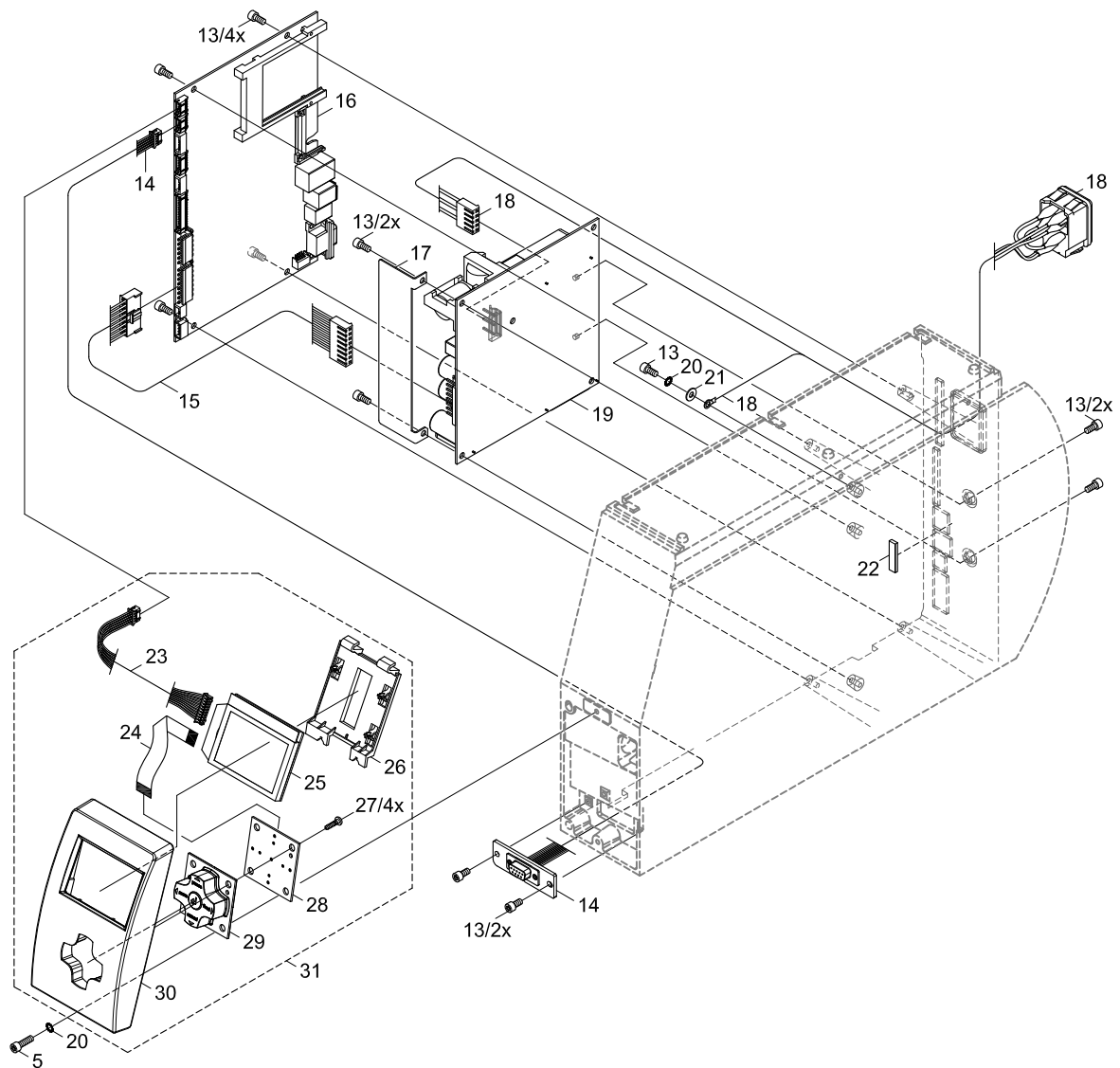
No	Part No.	Description	PU	Note	Serial No.	
					from	to
7.1	5948642.001	Baseplate	1	a		
7.2	5948648.001	Baseplate	1	bc		
8	5943113.001	Cover	1			
9	5948655.001	Cover				
10	5946462.001	Pinch Roller	1	bc		
11	5946450.001	Locking System	1	bc		
12	5946480.001	Plate	1	bc		

Notes	a	A2+/-...
	b	A2+/-...P
	c	A2+/300P Direct Thermal



No	Part No.	Description	PU	Note	Serial No.	
					from	to
5	5902565.001	Screw DIN7984-M4x10	10			
13	5902571.001	Screw DIN7984-M4x6	10			
14	5954095.001	Cable Periphery	1			
15	5943107.001	Cable Power Supply	1			
16	5551118.001	CPU X2	1			
17	5954179.001	Cover Plate	1			
18	5955046.001	Power Input Module	1			
19	5956220.001	Power Supply	1			
20	5903011.001	Toothed Washer DIN6797-A4.3	10			
21	5903003.001	Washer DIN125-A4.3	10			

No	Part No.	Description	PU	Note	Serial No.	
					from	to
22	5954132.001	Strip	5			
23	5954097.001	Cable Control Panel	1			
24	5954027.001	Cable Control Panel	1			
25	5540868.001	LCD Display	1			
26	5954026.001	Holder	1			
27	5902414.001	Screw EJOT-PT-K30x12	10			
28	5955034.001	PCB Navi Button	1			
29	5540930.001	Navigator Pad	1			
30	5954025.001	Control Panel Cover	1			
31	5954020.001	Control Panel	1			

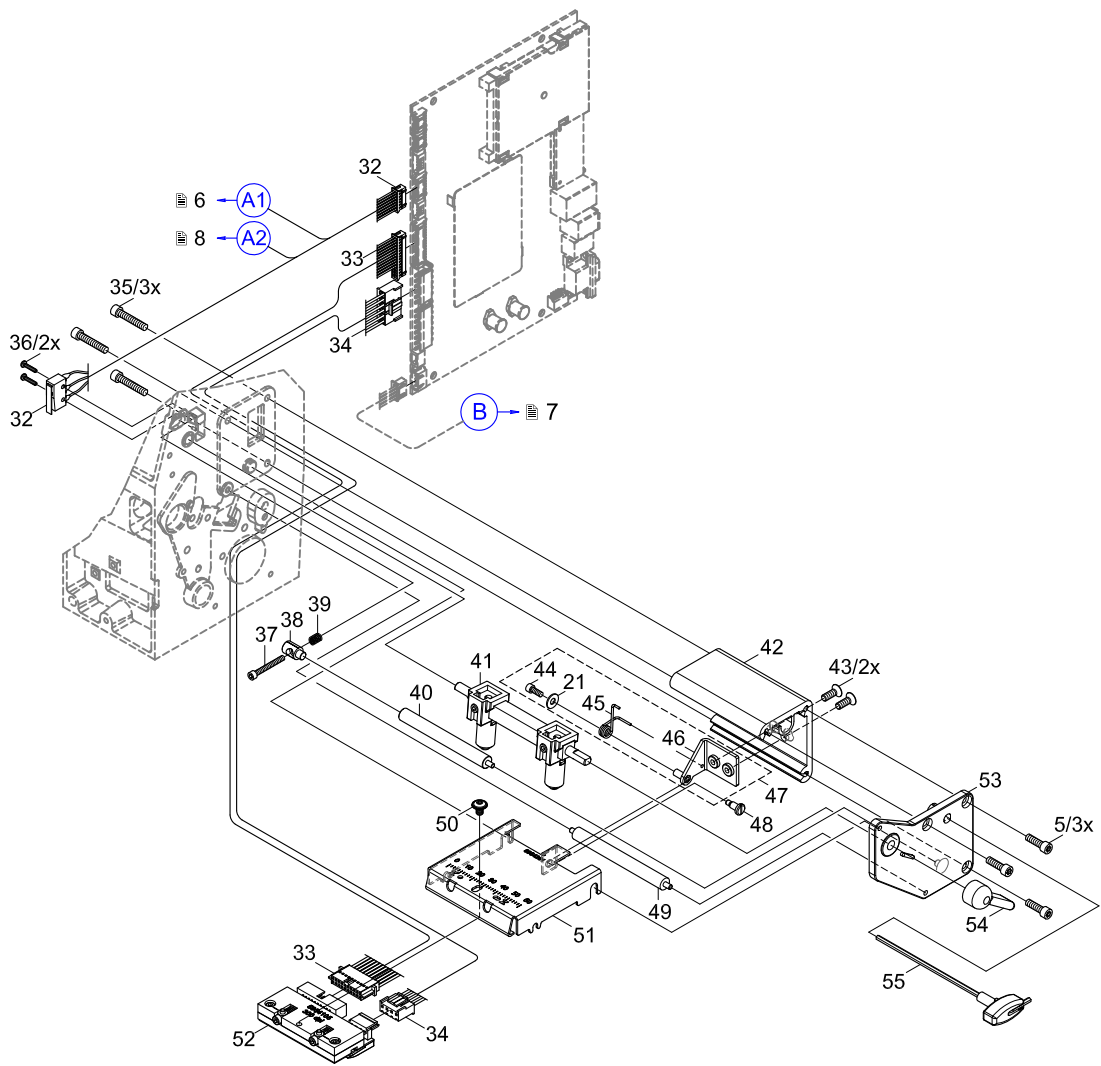


3 Printhead Assembly

No	Part No.	Description	PU	Note	Serial No.	
					from	to
5	5902565.001	Screw DIN7984-M4x10	10			
21	5903003.001	Washer DIN125-A4.3	10			
32	5954098.001	Cable Sensors	1			
33.1	5954293.001	Cable Printhead	1	d		
33.2	5954067.001	Cable Printhead	1	e		
34.1	5954292.001	Cable Printhead	1	d		
34.2	5954086.001	Cable Printhead	1	e		
35	5902572.001	Screw DIN7984-M4x16	10			
36	5902457.001	Screw DIN7985-M2x10	10			
37	5902011.001	Screw DIN912-M3x20	10			
38	5954060.001	Pivot Arm	1			
39	5906136.001	Spring	5			
40	5954276.001	Roller Ribbon	1			
41	5954284.001	Printhead Locking System	1			
42	5954215.001	Profile	1			

No	Part No.	Description	PU	Note	Serial No.	
					from	to
43	5902573.001	Screw DIN7991-M4x8	10			
44	5902007.001	Screw DIN912-M3x6	10			
45	5954057.001	Spring	1			
46	5954134.001	Bracket	1			
47	5954135.001	Bracket	1			
48	5902145.001	Screw DIN923-M3x6	10			
49	5954275.001	Roller	1			
50	5902817.001	Screw sim. ISO7380-M4x6	10			
51	5954281.001	Printhead Mounting Bracket	1			
52.1	5954105.001	Printhead 2/300	1	d		
52.2	5958686.001	Printhead 2/600	1	e		
53	5959742.001	Side Plate	1			
54	5954059.001	Lever	1			
55	5946113.001	Allen Key	1			

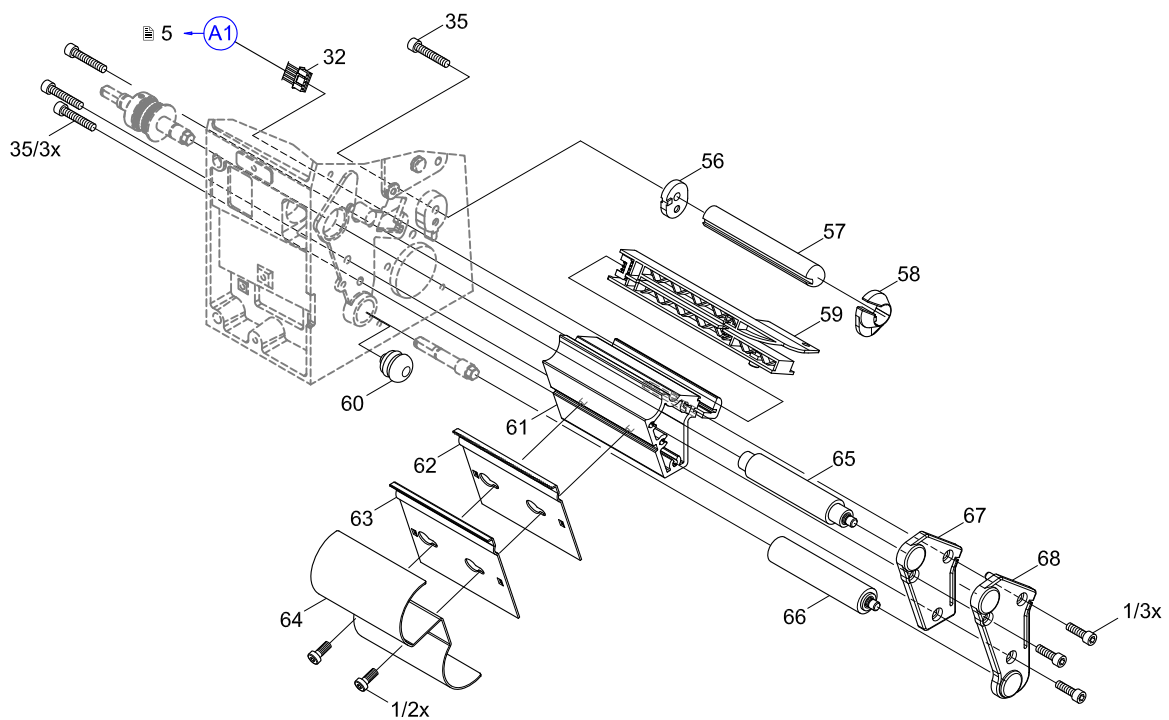
Notes	d	A2+/300 (P)
	e	A2+/600 (P)



No	Part No.	Description	PU	Note	Serial No.	
					from	to
1	5902241.001	Screw DIN7984-M4x10	10			
32	5954098.001	Cable Sensors	1			
35	5902572.001	Screw DIN7984-M4x16	10			
56	5946745.001	Distance Plate	1			
57	5954273.001	Axle	1			
58	5943025.001	Media Guide Ring	1			
59	5954269.001	Label Sensor	1			
60	5905866.001	Stopper 16x0.8	1	a		

No	Part No.	Description	PU	Note	Serial No.	
					from	to
61	5954271.001	Profile	1			
62	5954296.001	Tear-off Plate TP2	1	a		
63	5954295.001	Dispense Plate DP2	1	bc		
64	5954108.001	Rewind Guide Plate RG2	1	Obc		
65	5954102.001	Drive Roller DR2	1			
66	5954104.001	Roller RR2	1	bc		
67	5958711.001	Side Plate	1	a		
68	5958713.001	Side Plate	1	bc		

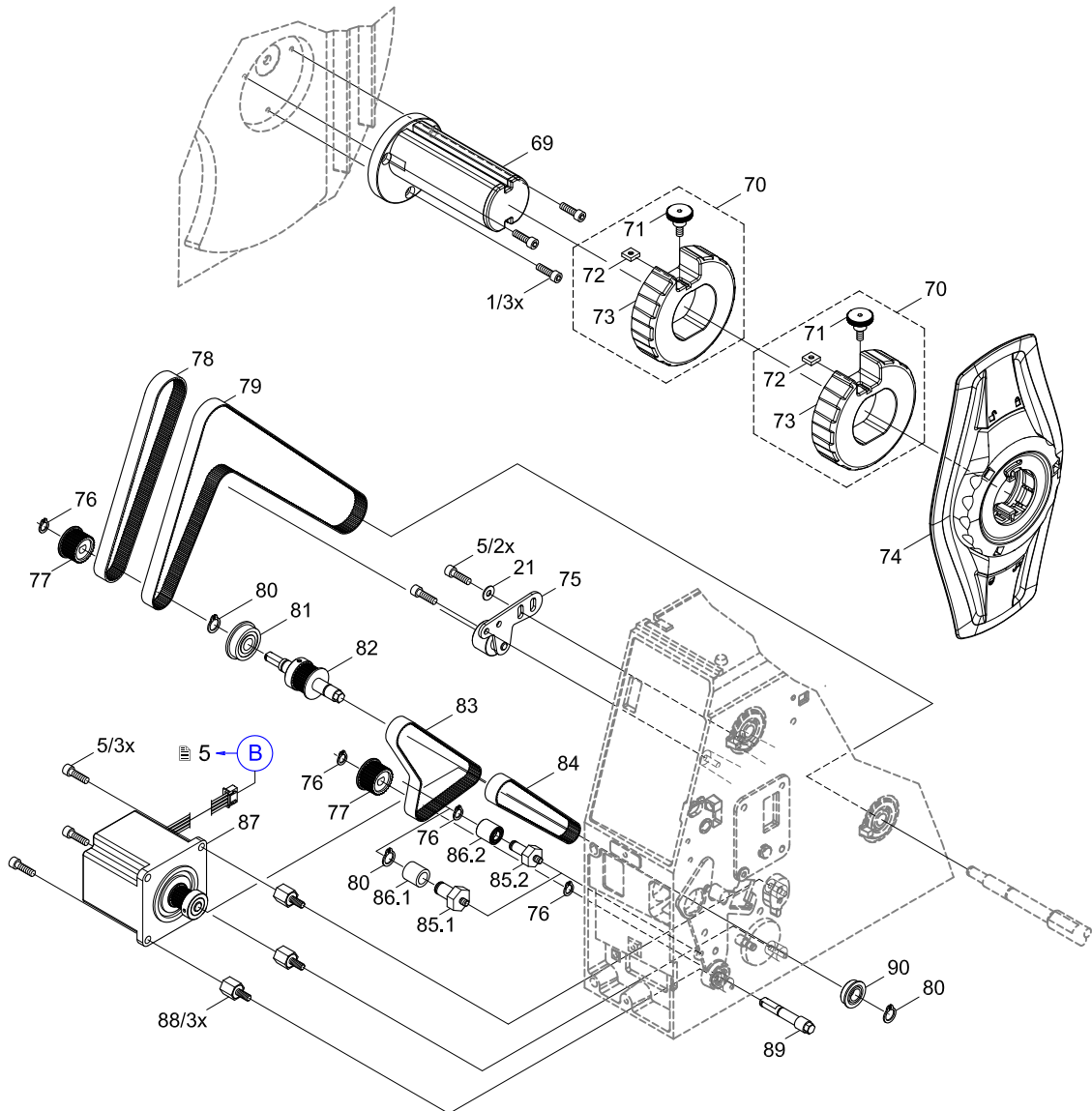
Notes	a	A2+...
	b	A2+...P
	c	A2+/300P Direct Thermal
	O	Option



No	Part No.	Description	PU	Note	Serial No.	
					from	to
1	5902241.001	Screw DIN7984-M4x10	10			
5	5902565.001	Screw DIN7984-M4x10	10			
21	5903003.001	Washer DIN125-A4.3	10			
69	5959806.001	Media Hub	1			
70	5959612.001	Adapter 75 mm Ø	1			
71	5959624.001	Knurled Screw	1			
72	8910053.001	Square Nut M4 8mm	10			
73	5959611.001	Adapter 75 mm Ø	1			
74	5959937.001	Margin Stop	1			
75	5954160.001	Belt Tension Bracket	1			
76	5903521.001	Snap Ring DIN471-A6	10			
77	5946238.001	Gear 29	1			
78	5905196.001	Belt 150MXL 037	1	a		
79	5906135.001	Belt 300MXL 037	1	bc		
80	5903516.001	Snap Ring DIN471-8x0.8	10			

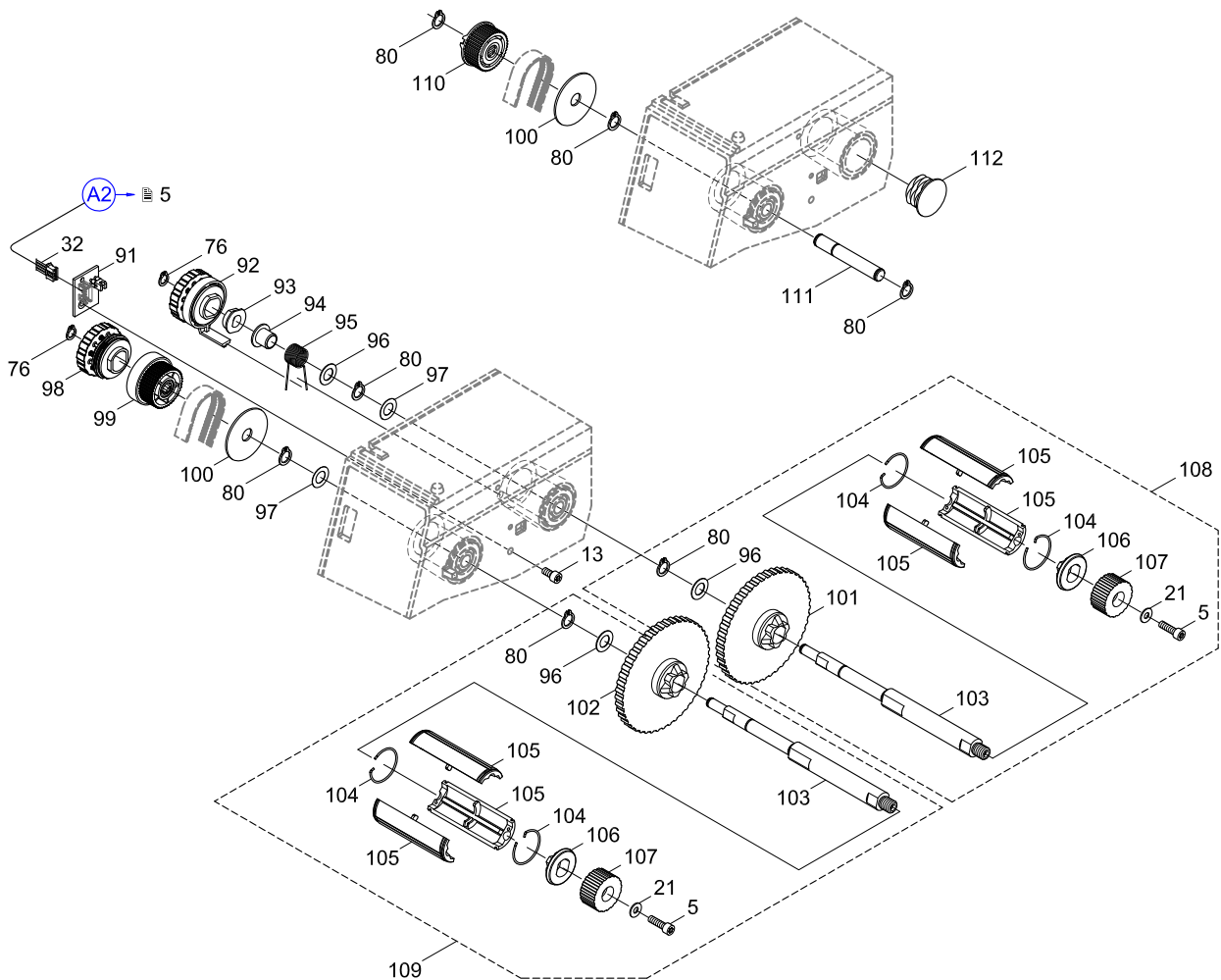
No	Part No.	Description	PU	Note	Serial No.	
					from	to
81	5901090.001	Ball Bearing DIN625-F608-ZZ	1			
82	5954182.001	Shaft	1			
83	5905857.001	Belt 120MXL 037	1	bc		
84	5905649.001	Belt 106MXL 037	1	a		
85.1	5954185.001	Bolt	1	bc		139908
85.2	5954158.001	Bolt	1	bc	139909	
86.1	5901034.001	Bushing	1	bc		139908
86.2	5954157.001	Roller	1	bc	139909	
87.1	5946203.001	Stepper Motor	1	d		
87.2	5946208.001	Stepper Motor	1	e		
88.1	5906157.001	Shock Absorber	5	a		
88.2	5949727.001	Distance Bolt M4x10	1	bc		
89	5954184.001	Shaft	1	bc		
90	5901071.001	Ball Bearing DIN625-F688-ZZ	1			

Notes	a	A2+...
	b	A2+...P
	c	A2+/300P Direct Thermal
	d	A2+/300 (P)
	e	A2+/600 (P)



No	Part No.	Description	PU	Note	Serial No.	
					from	to
5	5902565.001	Screw DIN7984-M4x10	10			
13	5902571.001	Screw DIN7984-M4x6	10			
21	5903003.001	Washer DIN125-A4.3	10			
32	5954098.001	Cable Sensors	1			
76	5903521.001	Snap Ring DIN471-A6	10			
80	5903516.001	Snap Ring DIN471-8x0.8	10			
91.1	5954024.001	Ribbon Sensor	1	ab		
91.2	5954028.001	PCB Detection	1	c		
92	5954114.001	Brake	1			
93	5541172.001	Pivot Arm	1			
94	5901123.001	Plastic Bushing	10			
95	5954131.001	Spring	5			
96	5903020.001	Washer DIN988-8x14x0.5	10			
97	5903038.001	Washer DIN988-8x14x0.2	10			
98	5954150.001	Slipping Clutch	1			
99	5954115.001	Gear 42	1			
100	5903128.001	Washer 35x8.4x1.25	10			
101	5954120.001	Wall Spacer	1			
102	5954112.001	Wall Spacer	1			
103	5954277.001	Axle	1			
104	5954124.001	Snap Ring	10			
105	5954220.001	Shell	3			
106	5954121.001	Cone	1			
107	5943022.001	Knurled Knob	1			
108	5954286.001	Ribbon Supply Hub	1			
109	5954285.001	Ribbon Takeup Hub	1			
110	5536569.001	Gear 42-08	1			
111	5954129.001	Axle	1			
112	5905699.001	Stopper 25x1	1			

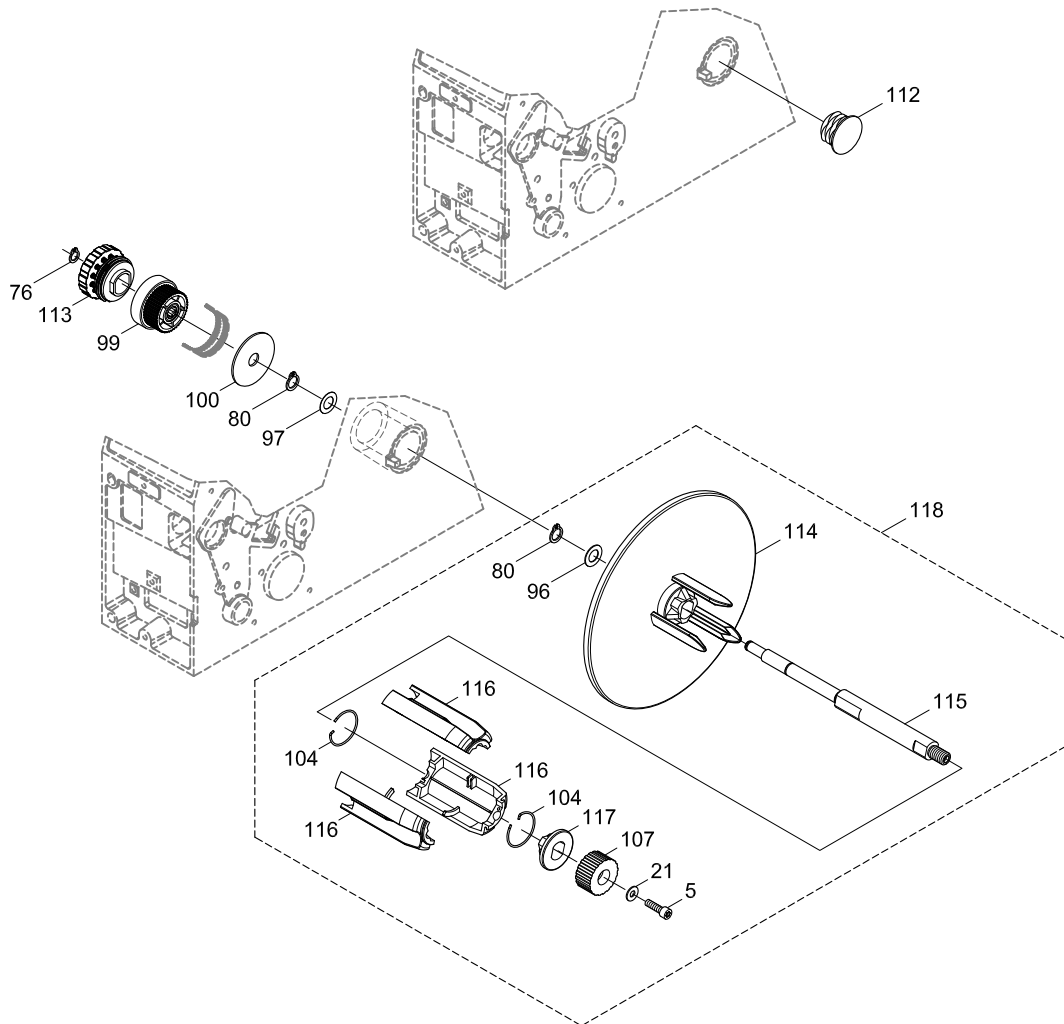
Notes	a	A2+...
	b	A2+...P
	c	A2+/300P Direct Thermal



No	Part No.	Description	PU	Note	Serial No.	
					from	to
5	5902565.001	Screw DIN7984-M4x10	10			
21	5903003.001	Washer DIN125-A4.3	10			
76	5903521.001	Snap Ring DIN471-A6	10			
80	5903516.001	Snap Ring DIN471-8x0.8	10			
96	5903020.001	Washer DIN988-8x14x0.5	10			
97	5903038.001	Washer DIN988-8x14x0.2	10			
99	5954115.001	Gear 42	1			
100	5903128.001	Washer 35x8.4x1.25	10			
104	5954124.001	Snap Ring	10			

No	Part No.	Description	PU	Note	Serial No.	
					from	to
107	5943022.001	Knurled Knob	1			
112	5905699.001	Stopper 25x1	1	a		
113	5954146.001	Slipping Clutch	1			
114	5954145.001	Rewinder Wall Plate	1			
115	5954278.001	Shaft, Takeup	1			
116	5954222.001	Shell	3			
117	5954143.001	Cone	1			
118	5954287.001	Internal Rewinder	1			

Notes a A2+/-...



Pos.	Figure/Page							Nr.	Part No.	Description	PU	SPR			Notes	Serial No.	
												from	to				
1						8		110	5536569.001	Gear 42-08	1						
2		4						25	5540868.001	LCD Display	1			C	D		
3		4						29	5540930.001	Navigator Pad	1				D		
4						8		93	5541172.001	Pivot Arm	1						
5		4						16	5551118.001	CPU X2	1		B	C	D		
6						7		86.1	5901034.001	Bushing	1					bc	139908
7						7		90	5901071.001	Ball Bearing DIN625-F688-ZZ	1						
8						7		81	5901090.001	Ball Bearing DIN625-F608-ZZ	1						
9						8		94	5901123.001	Plastic Bushing	10				D		
10			5					44	5902007.001	Screw DIN912-M3x6	10						
11			5					37	5902011.001	Screw DIN912-M3x20	10						
12			5					48	5902145.001	Screw DIN923-M3x6	10						
13	3			6	7			1	5902241.001	Screw DIN7984-M4x10	10						
14		4						27	5902414.001	Screw EJOT-PT-K30x12	10						
15			5					36	5902457.001	Screw DIN7985-M2x10	10						
16	3	4	5			7	8	9	5	5902565.001	Screw DIN7984-M4x10	10					
17		4				8		13	5902571.001	Screw DIN7984-M4x6	10						
18			5	6				35	5902572.001	Screw DIN7984-M4x16	10						
19			5					43	5902573.001	Screw DIN7991-M4x8	10						
20			5					50	5902817.001	Screw sim. ISO7380-M4x6	10						
21		4	5			7	8	9	21	5903003.001	Washer DIN125-A4.3	10					
22		4						20	5903011.001	Toothed Washer DIN6797-A4.3	10						
23						8	9	96	5903020.001	Washer DIN988-8x14x0.5	10						
24						8	9	97	5903038.001	Washer DIN988-8x14x0.2	10						
25						8	9	100	5903128.001	Washer 35x8.4x1.25	10						
26						7	8	9	80	5903516.001	Snap Ring DIN471-8x0.8	10					
27						7	8	9	76	5903521.001	Snap Ring DIN471-A6	10					
28						7		78	5905196.001	Belt 150MXL 037	1			C	D	a	
29						7		84	5905649.001	Belt 106MXL 037	1			C	D	a	
30	3							6	5905652.001	Foot	5						
31						8	9	112	5905699.001	Stopper 25x1	1						
32						7		83	5905857.001	Belt 120MXL 037	1			C	D	bc	
33				6				60	5905866.001	Stopper 16x0.8	1					a	
34						7		79	5906135.001	Belt 300MXL 037	1			C	D	bc	
35			5					39	5906136.001	Spring	5						
36						7		88.1	5906157.001	Shock Absorber	5			C	D		
37	3							4	5943004.001	Cover	1					a	
38						8	9	107	5943022.001	Knurled Knob	1				D		
39				6				58	5943025.001	Media Guide Ring	1						
40		4						15	5943107.001	Cable Power Supply	1						
41	3							8	5943113.001	Cover	1						
42			5					55	5946113.001	Allen Key	1						
43						7		87.1	5946203.001	Stepper Motor	1			C	D	d	
44						7		87.2	5946208.001	Stepper Motor	1			C	D	e	
45						7		77	5946238.001	Gear 29	1						
46	3							11	5946450.001	Locking System	1					bc	
47	3							10	5946462.001	Pinch Roller	1					bc	
48	3							12	5946480.001	Plate	1					bc	
49				6				56	5946745.001	Distance Plate	1						
50	3							7.1	5948642.001	Baseplate	1					a	
51	3							7.2	5948648.001	Baseplate	1					bc	
52	3							9	5948655.001	Cover	1						
53						7		88.2	5949727.001	Distance Bolt M4x10	1					b	
54	3							3.1	5954009.001	Chassis	1					a	
55		4						31	5954020.001	Control Panel	1			C	D		
56						8		91.1	5954024.001	Ribbon Sensor	1			C	D	ab	
57		4						30	5954025.001	Control Panel Cover	1						
58		4						26	5954026.001	Holder	1						
59		4						24	5954027.001	Cable Control Panel	1						
60						8		91.2	5954028.001	PCB Detection	1					c	
61			5					45	5954057.001	Spring	1						
62			5					54	5954059.001	Lever	1						
63			5					38	5954060.001	Pivot Arm	1						

PU Package unit

Notes

a - A2+...

b - A2+...P

c - A2+/300P Direct Thermal

d - A2+/300 (P)

e - A2+/600 (P)

SPR Recommendation

A - wearing parts and accessories

B - recommended spare parts for quick repair

C - recommended spare parts for distributors

D - recommended spare parts for central stores

Pos.	Figure/Page					Nr.	Part No.	Description	PU	SPR				Notes	Serial No.	
64			5			33.2	5954067.001	Cable Printhead	1					e		
65			5			34.2	5954086.001	Cable Printhead	1					e		
66		4				14	5954095.001	Cable Periphery	1							
67		4				23	5954097.001	Cable Control Panel	1							
68			5	6	8	32	5954098.001	Cable Sensors	1							
69				6		65	5954102.001	Drive Roller DR2	1	A	B	C	D			
70				6		66	5954104.001	Roller RR2	1	A	B	C	D	bc		
71			5			52.1	5954105.001	Printhead 2/300	1	A	B	C	D	d		
72				6		64	5954108.001	Rewind Guide Plate RG2	1					Obc		
73					8	102	5954112.001	Wall Spacer	1							
74					8	92	5954114.001	Brake	1		B	C	D			
75					8	9	99	5954115.001	Gear 42	1						
76					8	101	5954120.001	Wall Spacer	1							
77					8	106	5954121.001	Cone	1				D			
78					8	9	104	5954124.001	Snap Ring	10		B	C	D		
79					8	111	5954129.001	Axle	1							
80					8	95	5954131.001	Spring	5							
81		4				22	5954132.001	Strip	5							
82			5			46	5954134.001	Bracket	1							
83			5			47	5954135.001	Bracket	1							
84						9	117	5954143.001	Cone	1						
85						9	114	5954145.001	Rewinder Wall Plate	1						
86						9	113	5954146.001	Slipping Clutch	1						
87					8	98	5954150.001	Slipping Clutch	1		B	C	D			
88					7	86.2	5954157.001	Roller	1					bc	139909	
89					7	85.2	5954158.001	Bolt	1					bc	139909	
90					7	75	5954160.001	Belt Tension Bracket	1					bc		
91		4				17	5954179.001	Cover Plate	1							
92					7	82	5954182.001	Shaft	1							
93					7	89	5954184.001	Shaft	1					bc		
94					7	85.1	5954185.001	Bolt	1					bc		139908
95			5			42	5954215.001	Profile	1							
96					8	105	5954220.001	Shell	3				D			
97						9	116	5954222.001	Shell	3				D		
98				6		59	5954269.001	Label Sensor	1			C	D			
99				6		61	5954271.001	Profile	1							
100				6		57	5954273.001	Axle	1							
101			5			49	5954275.001	Roller	1							
102			5			40	5954276.001	Roller Ribbon	1							
103					8	103	5954277.001	Axle	1							
104						9	115	5954278.001	Shaft, Takeup	1						
105			5			51	5954281.001	Printhead Mounting Bracket	1							
106			5			41	5954284.001	Printhead Locking System	1							
107					8	109	5954285.001	Ribbon Takeup Hub	1							
108					8	108	5954286.001	Ribbon Supply Hub	1							
109						9	118	5954287.001	Internal Rewinder	1						
110			5			34.1	5954292.001	Cable Printhead	1					d		
111			5			33.1	5954293.001	Cable Printhead	1					d		
112				6		63	5954295.001	Dispense Plate DP2	1					bc		
113				6		62	5954296.001	Tear-off Plate TP2	1					a		
114		3				2	5954399.001	Cover Plate	1							
115			4			28	5955034.001	PCB Navi Button	1			C	D			
116			4			18	5955046.001	Power Input Module	1			C	D			
117			4			19	5956220.001	Power Supply	1			C	D			
118			5			52.2	5958686.001	Printhead 2/600	1	A	B	C	D	e		
119				6		67	5958711.001	Side Plate	1					a		
120				6		68	5958713.001	Side Plate	1					bc		
121		3				3.2	5958778.001	Chassis	1					b		
122		3				3.3	5958779.001	Chassis	1					c		
123					7	73	5959611.001	Adapter 75 mm Ø	1							
124					7	70	5959612.001	Adapter 75 mm Ø	1							
125					7	71	5959624.001	Knurled Screw	1							
126			5			53	5959742.001	Side Plate	1							

PU Package unit

Notes

a - A2+/
b - A2+/
c - A2+/300P Direct Thermal
d - A2+/300 (P)
e - A2+/600 (P)

SPR Recommendation

A - wearing parts and accessories
B - recommended spare parts for quick repair
C - recommended spare parts for distributors
D - recommended spare parts for central stores

Pos.	Figure/Page						Nr.	Part No.	Description	PU	SPR				Notes	Serial No.	
																from	to
127					7		69	5959806.001	Media Hub	1							
128					7		74	5959937.001	Margin Stop	1							
129					7		72	8910053.001	Square Nut M4 8mm	10							

9 Packaging/Accessories

Pos.	Figure/Page						Nr.	Part No.	Description	PU	SPR				Notes	Serial No.	
																from	to
130							-	5550611.001	Power Cable Type E+F	1							
131							-	5901655.001	Cable USB	1							
132							-	9109291.001	Packaging	1							

PU Package unit

SPR Recommendation

A - wearing parts and accessories

B - recommended spare parts for quick repair

C - recommended spare parts for distributors

D - recommended spare parts for central stores

Notes

a - A2+/-...

b - A2+/-...P

c - A2+/300P Direct Thermal

d - A2+/300 (P)

e - A2+/600 (P)