

Spare Parts List



Label Printer

A8+

Made in Germany

for the following products

Family	Type
A+	A8+/300

Edition: 10/2020 - Part No. 9008769

Copyright

This documentation as well as translation hereof are property of cab Produkttechnik GmbH & Co. KG.

The replication, conversion, duplication or divulgement of the whole manual or parts of it for other intentions than its original intended purpose - in particular the procurement of spare parts for products sold by cab – demand the previous written authorisation by cab.

Editor

Regarding questions or comments please contact cab Produkttechnik GmbH & Co. KG.

Topicality

Due to the constant further development of our products discrepancies between documentation and product can occur.

Please check www.cab.de for the latest update.

Terms and conditions

Deliveries and performances are effected under the "General conditions of sale of cab"

Table of Contents

1	Covering	3
2	Control Panel, Power Supply, PCB CPU	4
3	Printhead Assembly	5
4	Print Roller Assembly, Label Sensor	6
5	Main Drive, Roll Retainer	7
6	Transfer Ribbon Winders	8
7	Spare Parts Register	9
8	Packaging/Accessories.....	11

Germany
cab Produkttechnik GmbH & Co KG
 Karlsruhe
 Phone +49 721 6626 0
www.cab.de

USA
cab Technology, Inc.
 Chelmsford, MA
 Phone +1 978 250 8321
www.cab.de/us

Taiwan
cab Technology Co., Ltd.
 Taipei
 Phone +886 (02) 8227 3966
www.cab.de/tw

China
cab (Shanghai) Trading Co., Ltd.
 Guangzhou
 Phone +86 (020) 2831 7358
www.cab.de/cn

France
cab Technologies S.à.r.l.
 Niedermodern
 Phone +33 388 722501
www.cab.de/fr

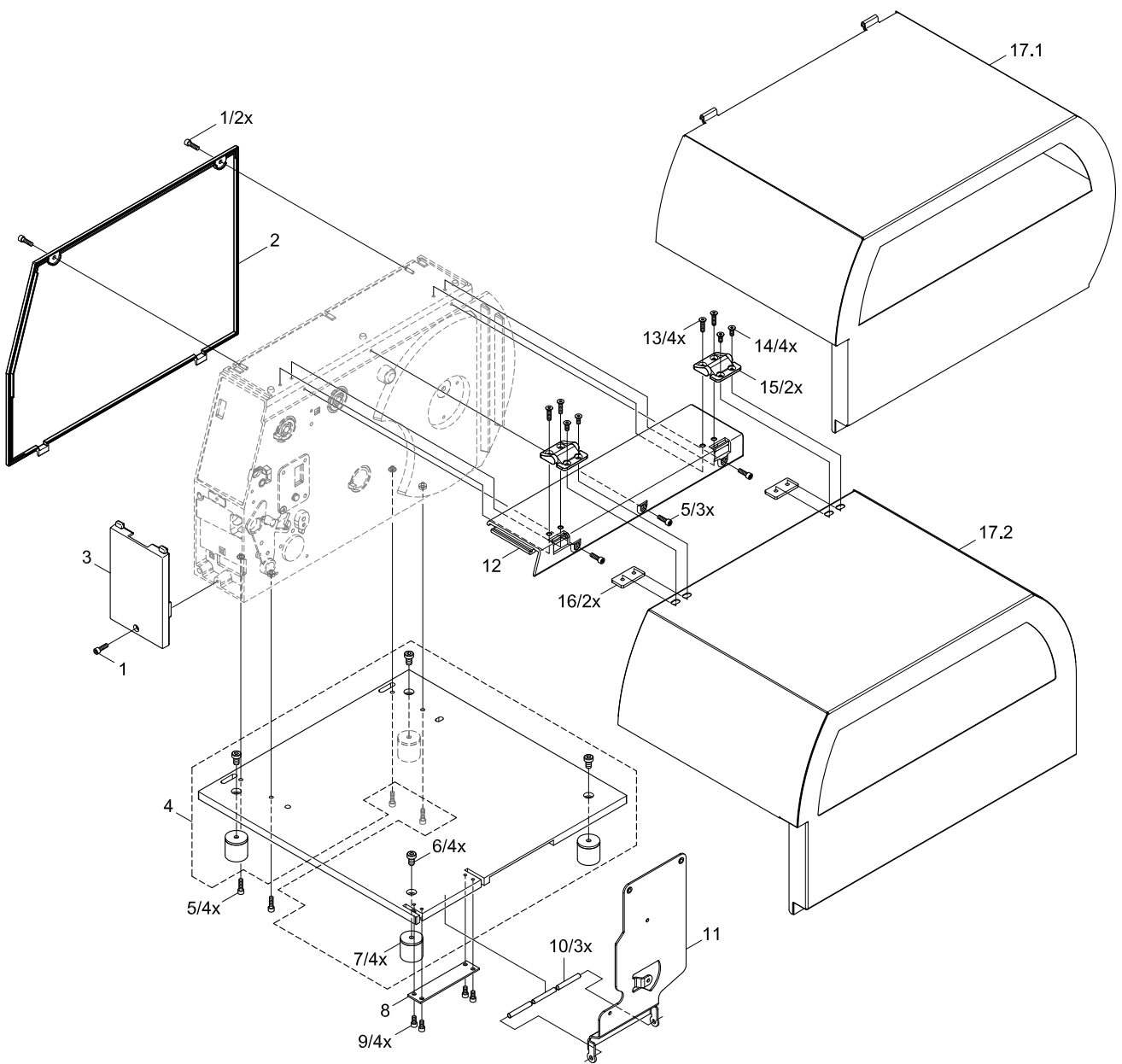
Mexico
cab Technology, Inc.
 Juárez
 Phone +52 656 682 4301
www.cab.de/es

China
cab (Shanghai) Trading Co., Ltd.
 Shanghai
 Phone +86 (021) 6236 3161
www.cab.de/cn

South Africa
cab Technology (Pty) Ltd.
 Randburg
 Phone +27 11 886 3580
www.cab.de/za

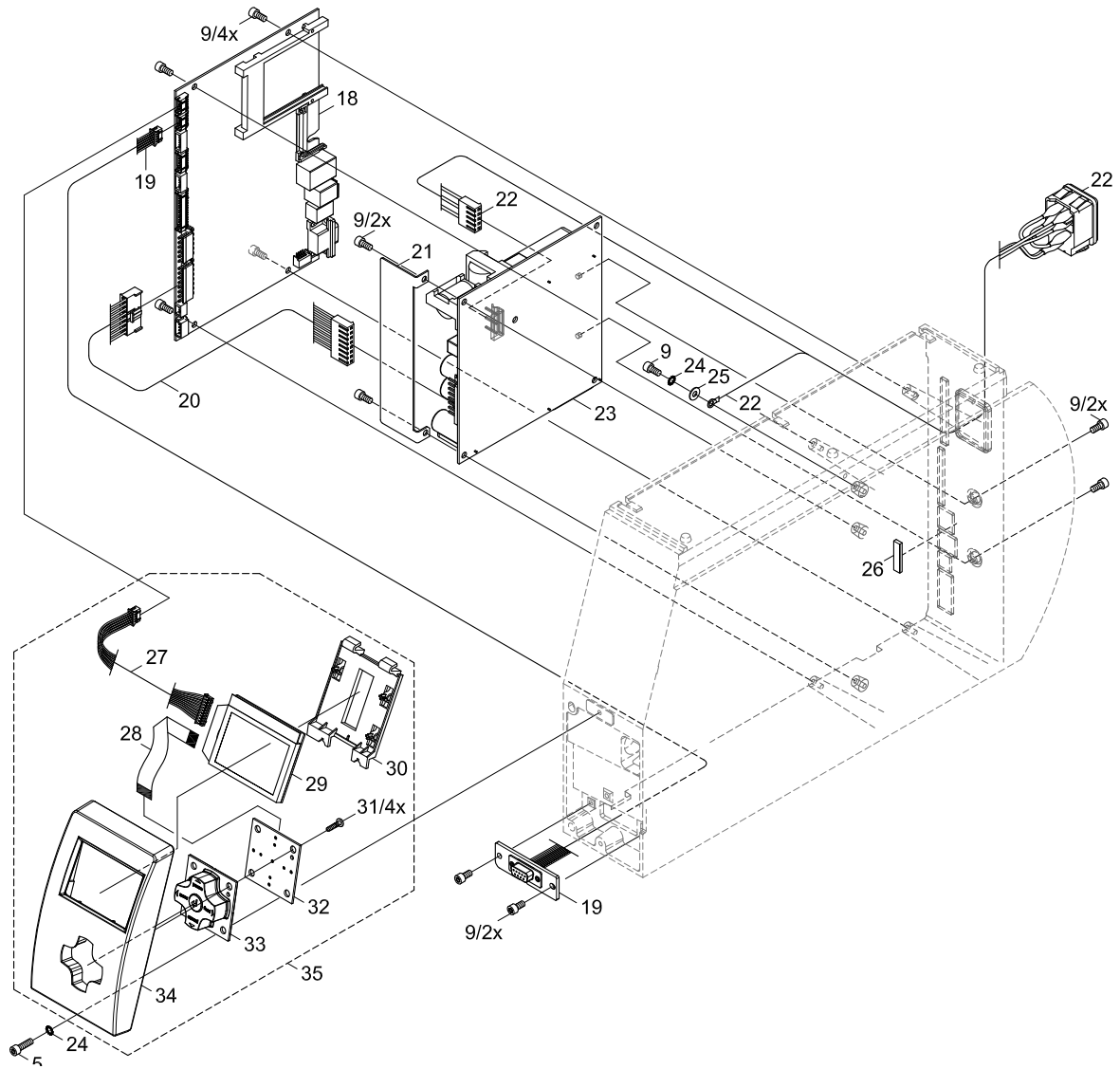
No	Part No.	Description	PU	Note	Serial No.	
					from	to
1	5902241.001	Screw DIN7984-M4x10	10			
2	5954399.001	Cover Plate	1			
3	5943004.001	Cover	1			
4	5969316.001	Base Plate	1			
5	5902565.001	Screw DIN7984-M4x10	10			
6	5902375.001	Screw DIN7984-M6x10	10			
7	5906163.001	Stopper	1			
8	5945849.001	Plate	1			
9	5902571.001	Screw DIN7984-M4x6	10			

No	Part No.	Description	PU	Note	Serial No.	
					from	to
10	5945848.001	Axle	1			
11	5958525.001	Support Plate	1			
12	5969310.001	Cover	1			
13	5969328.001	Screw M4x20	10		118491	
14	5969326.001	Screw M4x10	10		118491	
15	5965848.001	Hinge	1		118491	
16	5959732.001	Threaded Plate	1		118491	
17.1	5954014.001	Metal Cover	1			118490
17.2	5969323.001	Metal Cover	1		118491	



No	Part No.	Description	PU	Note	Serial No.	
					from	to
5	5902565.001	Screw DIN7984-M4x10	10			
9	5902571.001	Screw DIN7984-M4x6	10			
18	5551118.001	CPU X2	1			
19	5954095.001	Cable Periphery	1			
20	5943107.001	Cable Power Supply	1			
21	5954179.001	Cover Plate	1			
22	5955046.001	Power Input Module	1			
23	5956220.001	Power Supply	1			
24	5903011.001	Toothed Washer DIN6797-A4.3	10			
25	5903003.001	Washer DIN125-A4.3	10			

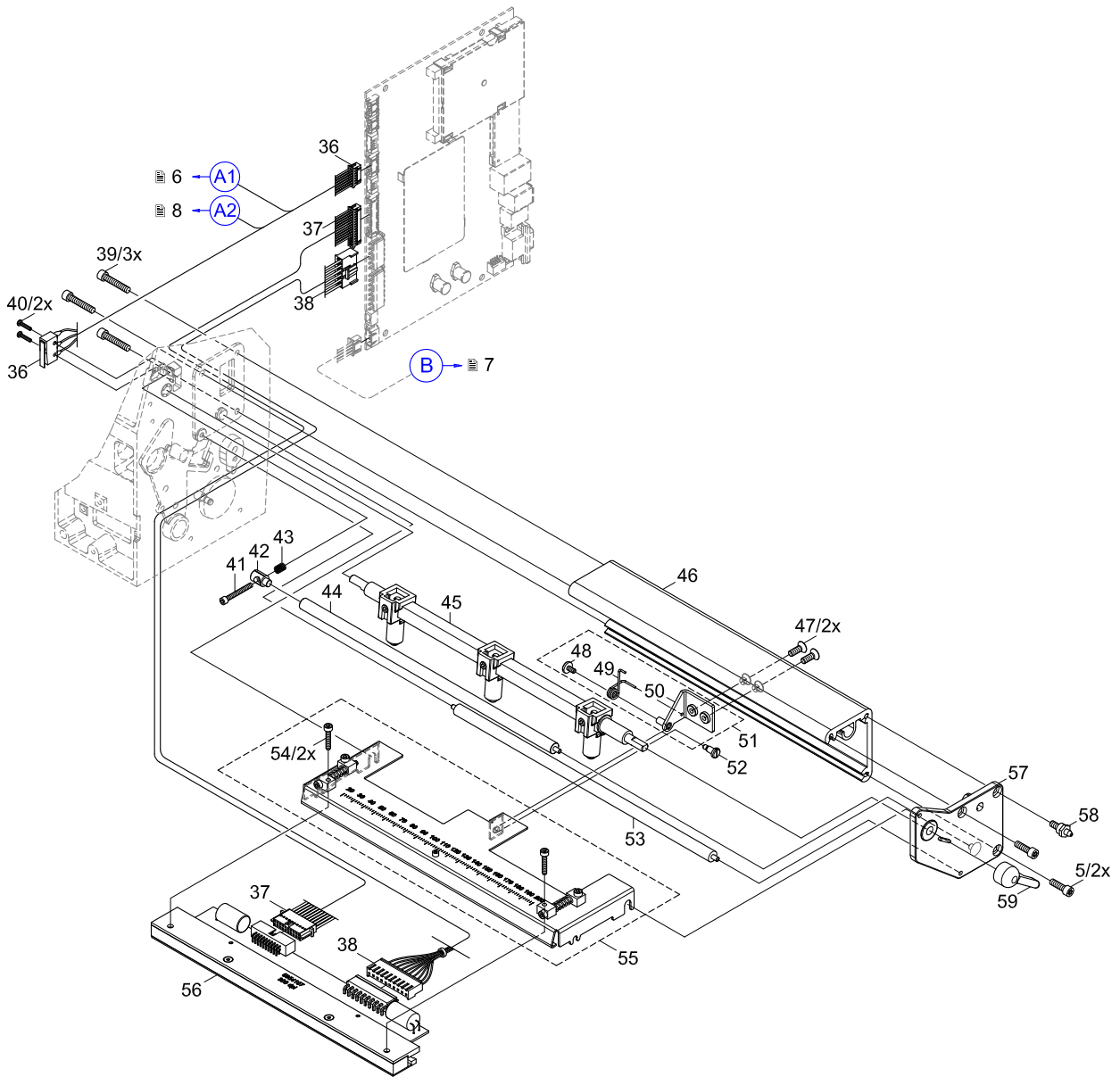
No	Part No.	Description	PU	Note	Serial No.	
					from	to
26	5954132.001	Strip	5			
27	5954097.001	Cable Control Panel	1			
28	5954027.001	Cable Control Panel	1			
29	5540868.001	LCD Display	1			
30	5954026.001	Holder	1			
31	5902414.001	Screw EJOT-PT-K30x12	10			
32	5955034.001	PCB Navi Button	1			
33	5540930.001	Navigator Pad	1			
34	5954025.001	Control Panel Cover	1			
35	5954020.001	Control Panel	1			



3 Printhead Assembly

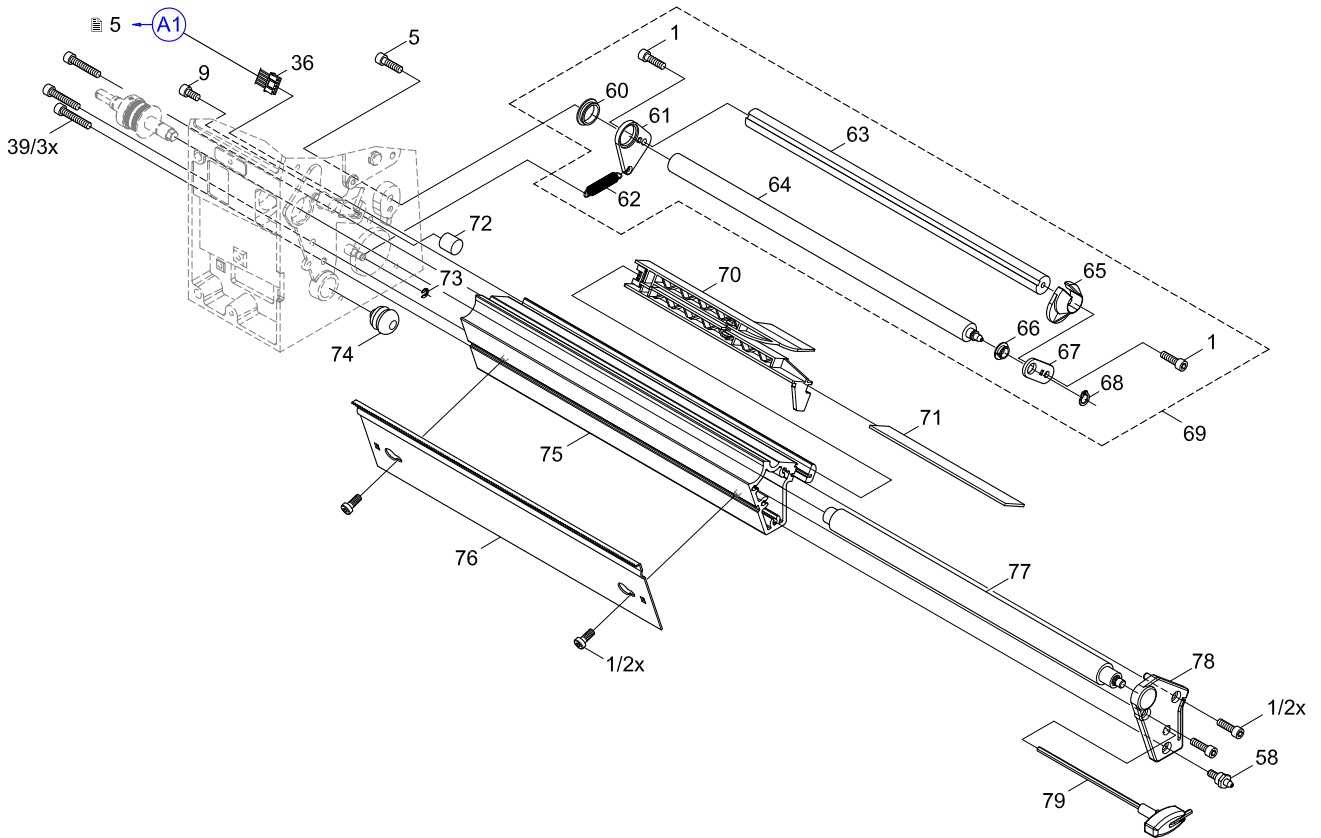
No	Part No.	Description	PU	Note	Serial No.	
					from	to
5	5902565.001	Screw DIN7984-M4x10	10			
36	5954098.001	Cable Sensors	1			
37	5958531.001	Cable Printhead	1			
38	5958530.001	Cable Printhead	1			
39	5902572.001	Screw DIN7984 M4x16	10			
40	5902457.001	Screw DIN7985-M2x10	10			
41	5902011.001	Screw DIN912-M3x20	10			
42	5954060.001	Pivot Arm	1			
43	5906136.001	Spring	5			
44	5958513.001	Roller Ribbon	1			
45	5958528.001	Printhead Locking System	1			
46	5958510.001	Profile	1			
47	5902573.001	Screw DIN7991-M4x8	10			

No	Part No.	Description	PU	Note	Serial No.	
					from	to
48	5902823.001	Screw DIN921 M3x6	10			
49	5954239.001	Spring	1			
50	5954134.001	Bracket	1			
51	5954261.001	Bracket	1			
52	5902145.001	Screw DIN923-M3x6	10			
53	5958514.001	Roller	1			
54	5902474.001	Screw DIN912-M3x16	10			
55	5958521.001	Printhead Mounting Bracket	1			
56	5954107.001	Printhead 8/300	1			
57	5959742.001	Side Plate	1			
58	5945846.001	Pin	1			
59	5958529.001	Lever	1			



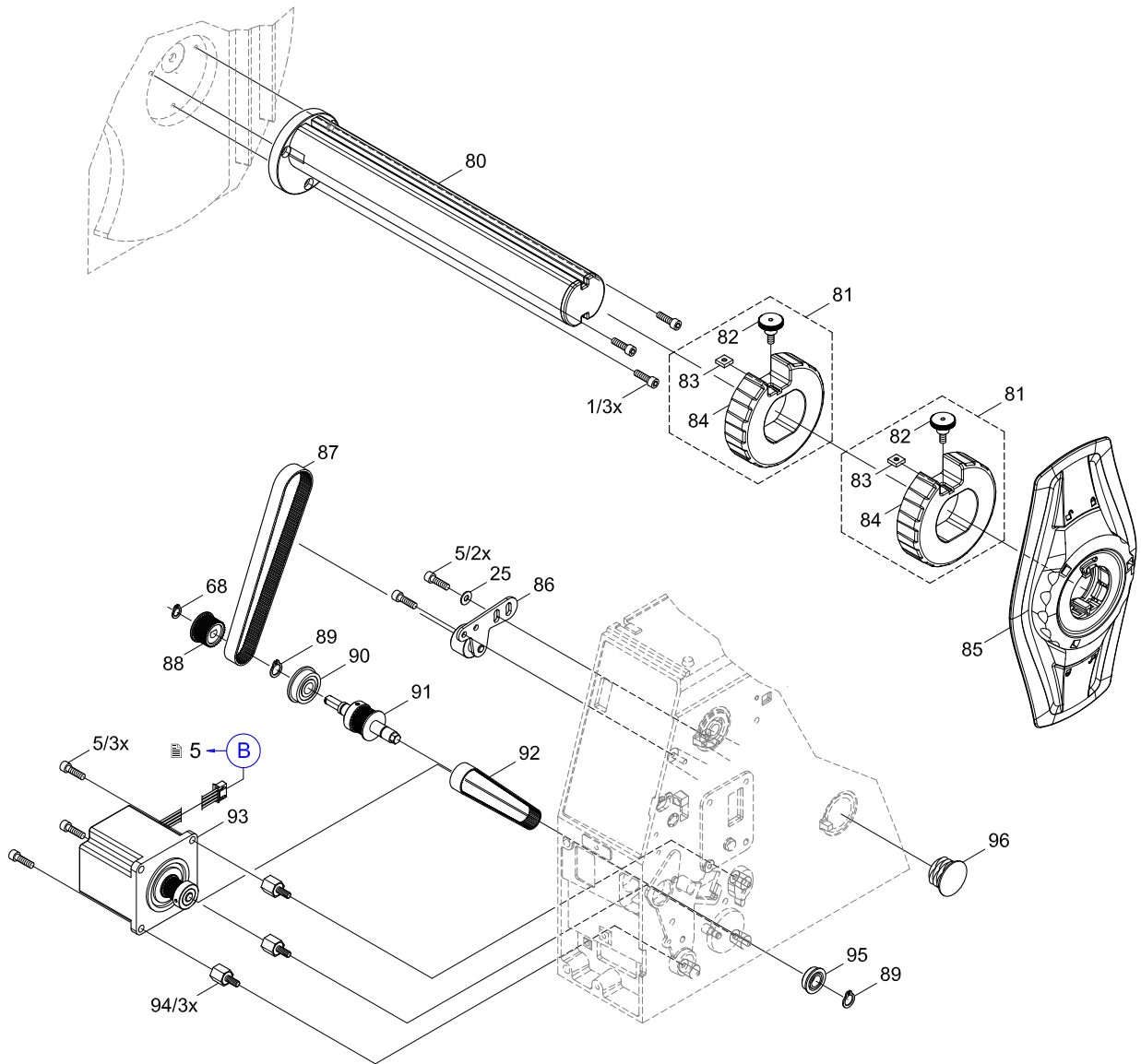
No	Part No.	Description	PU	Note	Serial No.	
					from	to
1	5902241.001	Screw DIN7984-M4x10	10			
5	5902565.001	Screw DIN7984-M4x10	10			
9	5902571.001	Screw DIN7984-M4x6	10			
36	5954098.001	Cable Sensors	1			
39	5902572.001	Screw DIN7984 M4x16	10			
58	5945846.001	Pin	1			
60	5901026.001	Plastic Bushing	1			
61	5946570.001	Bearing Plate	1			
62	5906112.001	Spring	1			
63	5946578.001	Axle	1			
64	5946577.001	Axle	1			
65	5943025.001	Media Guide Ring	1			
66	5901036.001	Plastic Bushing	1			

No	Part No.	Description	PU	Note	Serial No.	
					from	to
67	5946571.001	Bearing Plate	1			
68	5903521.001	Snap Ring DIN471-A6	10			
69	5946582.001	Swing	1			
70	5954090.001	Label Sensor	1			
71	5945858.001	Strip	1			
72	5905885.001	Stopper M4x10	1			
73	5903507.001	E-Ring DIN6799-3.2	10			
74	5905866.001	Stopper 16x0.8	1			
75	5958511.001	Profile	1			
76	5946279.001	Tear-off Plate TP8	1			
77	5954103.001	Drive Roller DR8	1			
78	5954186.001	Side Plate	1			
79	5946113.001	Allen Key	1			



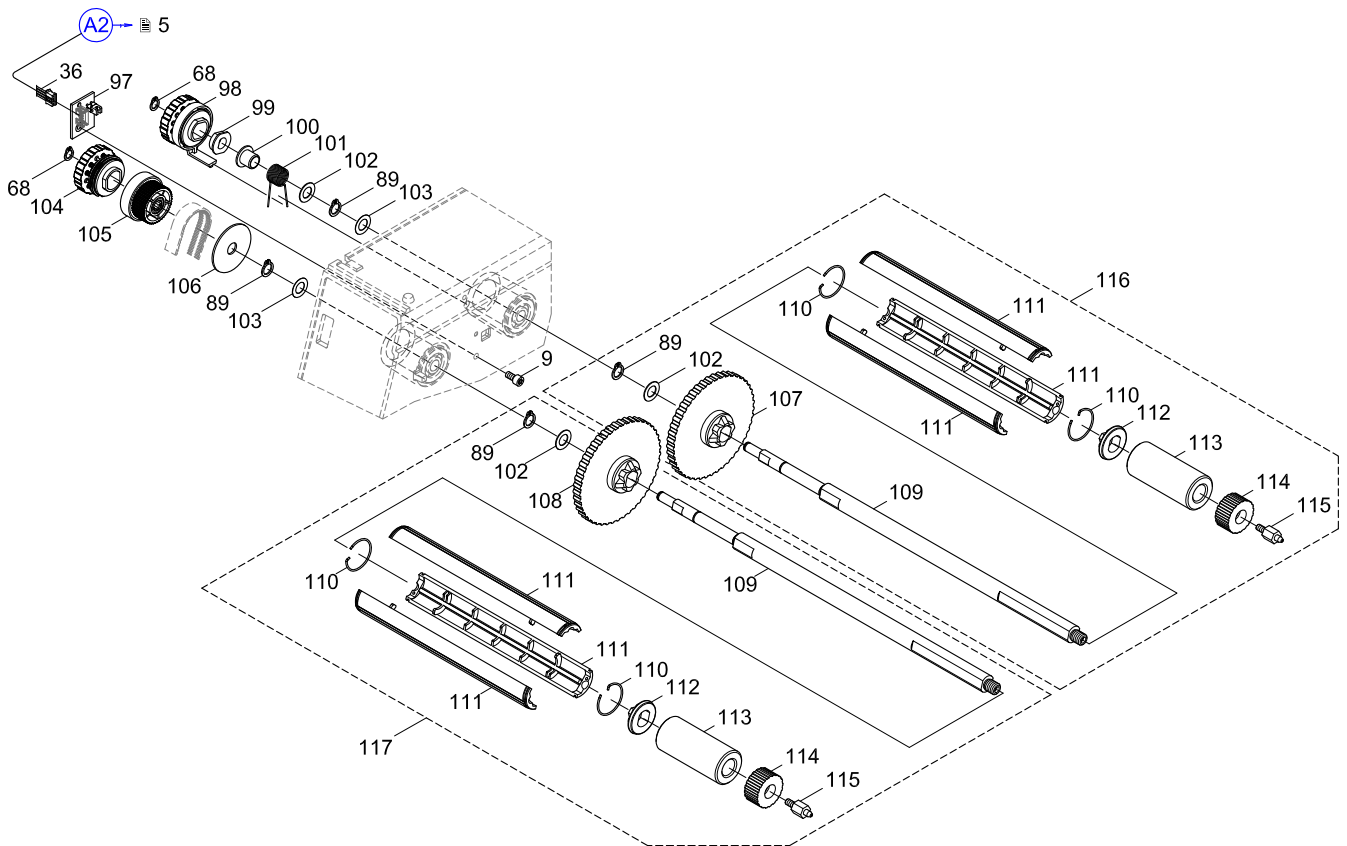
No	Part No.	Description	PU	Note	Serial No.	
					from	to
1	5902241.001	Screw DIN7984-M4x10	10			
5	5902565.001	Screw DIN7984-M4x10	10			
25	5903003.001	Washer DIN125-A4.3	10			
68	5903521.001	Snap Ring DIN471-A6	10			
80	5959808.001	Media Holder	1			
81	5959612.001	Adapter 75	1			
82	5959624.001	Knurled Screw	1			
83	8910053.001	Square Nut M4 8mm	10			
84	5959611.001	Adapter 75	1			
85	5959937.001	Margin Stop	1			
86	5954160.001	Belt Tension Bracket	1			

No	Part No.	Description	PU	Note	Serial No.	
					from	to
87	5905196.001	Belt 150MXL 037	1			
88	5946238.001	Gear 29	1			
89	5903516.001	Snap Ring DIN471-8x0.8	10			
90	5901090.001	Ball Bearing DIN625-F608-ZZ	1			
91	5954182.001	Shaft	1			
92	5905649.001	Belt 106MXL 037	1			
93	5946206.001	Stepper Motor	1			
94	5906157.001	Shock Absorber	5			
95	5901071.001	Ball Bearing DIN625-F688-ZZ	1			
96	5905699.001	Stopper 25x1	1			



No	Part No.	Description	PU	Note	Serial No.	
					from	to
9	5902571.001	Screw DIN7984-M4x6	10			
36	5954098.001	Cable Sensors	1			
68	5903521.001	Snap Ring DIN471-A6	10			
89	5903516.001	Snap Ring DIN471-8x0.8	10			
97	5954024.001	Ribbon Sensor	1			
98	5954153.001	Brake	1			
99	5541172.001	Pivot Arm	1			
100	5901123.001	Plastic Bushing	10			
101	5954131.001	Spring	5			
102	5903020.001	Washer DIN988-8x14x0.5	10			
103	5903038.001	Washer DIN988-8x14x0.2	10			
104	5954152.001	Slipping Clutch	1			
105	5954115.001	Gear 42	1			

No	Part No.	Description	PU	Note	Serial No.	
					from	to
106	5903128.001	Washer 35x8.4x1.25	10			
107	5954120.001	Wall Spacer	1			
108	5954112.001	Wall Spacer	1			
109	5958516.001	Axle	1			
110	5954124.001	Snap Ring	10			
111	5954221.001	Shell	3			
112	5954121.001	Cone	1			
113	5958517.001	Extension	1			
114	5943022.001	Knurled Knob	1			
115	5958523.001	Pin	1			
116	5958527.001	Ribbon Supply Hub	1			
117	5958526.001	Ribbon Takeup Hub	1			



7 Spare Parts Register

9

Pos.	Figure/Page							Nr.	Part No.	Description	PU	SPR				Notes	Serial No.	
	1	2	3	4	5	6	7					8	9	10	11		12	13
1				4				29	5540868.001	LCD Display	1	-	-	-	-	D		
2				4				33	5540930.001	Navigator Pad	1	-	-	-	-			
3							8	99	5541172.001	Pivot Arm	1	-	-	-	-			
4				4				18	5551118.001	CPU X2	1	-	B	C	D			
5						6		60	5901026.001	Plastic Bushing	1	-	-	-	-			
6						6		66	5901036.001	Plastic Bushing	1	-	-	-	-			
7							7	95	5901071.001	Ball Bearing DIN625-F688-ZZ	1	-	-	-	-			
8							7	90	5901090.001	Ball Bearing DIN625-F608-ZZ	1	-	-	-	-			
9							8	100	5901123.001	Plastic Bushing	10	-	-	-	-	D		
10					5			41	5902011.001	Screw DIN912-M3x20	10	-	-	-	-			
11					5			52	5902145.001	Screw DIN923-M3x6	10	-	-	-	-			
12	3				6	7		1	5902241.001	Screw DIN7984-M4x10	10	-	-	-	-			
13	3							6	5902375.001	Screw DIN7984-M6x10	10	-	-	-	-			
14				4				31	5902414.001	Screw EJOT-PT-K30x12	10	-	-	-	-			
15					5			40	5902457.001	Screw DIN7985-M2x10	10	-	-	-	-			
16					5			54	5902474.001	Screw DIN912-M3x16	10	-	-	-	-			
17	3	4			5	6	7	5	5902565.001	Screw DIN7984-M4x10	10	-	-	-	-			
18	3	4				6	8	9	5902571.001	Screw DIN7984-M4x6	10	-	-	-	-			
19					5	6		39	5902572.001	Screw DIN7984 M4x16	10	-	-	-	-			
20					5			47	5902573.001	Screw DIN7991-M4x8	10	-	-	-	-			
21					5			48	5902823.001	Screw DIN921 M3x6	10	-	-	-	-			
22		4					7	25	5903003.001	Washer DIN125-A4.3	10	-	-	-	-			
23		4						24	5903011.001	Toothed Washer DIN6797-A4.3	10	-	-	-	-			
24							8	102	5903020.001	Washer DIN988-8x14x0.5	10	-	-	-	-			
25							8	103	5903038.001	Washer DIN988-8x14x0.2	10	-	-	-	-			
26							8	106	5903128.001	Washer 35x8.4x1.25	10	-	-	-	-			
27					6			73	5903507.001	E-Ring DIN6799-3.2	10	-	-	-	-			
28						7	8	89	5903516.001	Snap Ring DIN471-8x0.8	10	-	-	-	-			
29						6	7	8	68	5903521.001	Snap Ring DIN471-A6	10	-	-	-	-		
30							7	87	5905196.001	Belt 150MXL 037	1	-	-	C	D			
31							7	92	5905649.001	Belt 106MXL 037	1	-	-	C	D			
32							7	96	5905699.001	Stopper 25x1	1	-	-	-	-			
33					6			74	5905866.001	Stopper 16x0.8	1	-	-	-	-			
34					6			72	5905885.001	Stopper M4x10	1	-	-	-	-			
35					6			62	5906112.001	Spring	1	-	-	C	D			
36					5			43	5906136.001	Spring	5	-	-	-	-			
37							7	94	5906157.001	Shock Absorber	5	-	-	-	-			
38	3							7	5906163.001	Stopper	1	-	-	-	-	D		
39	3							3	5943004.001	Cover	1	-	-	-	-			
40							8	114	5943022.001	Knurled Knob	1	-	-	-	-	D		
41						6		65	5943025.001	Media Guide Ring	1	-	-	-	-			
42				4				20	5943107.001	Cable Power Supply	1	-	-	C	D			
43					5	6		58	5945846.001	Pin	1	-	-	-	-			
44	3							10	5945848.001	Axle	1	-	-	-	-			
45	3							8	5945849.001	Plate	1	-	-	-	-			
46						6		71	5945858.001	Strip	1	-	-	-	-			
47						6		79	5946113.001	Allen Key	1	-	-	-	-			
48							7	93	5946206.001	Stepper Motor	1	-	-	C	D			
49							7	88	5946238.001	Gear 29	1	-	-	-	-			
50						6		76	5946279.001	Tear-off Plate TP8	1	-	-	-	-			
51						6		61	5946570.001	Bearing Plate	1	-	-	-	-			
52						6		67	5946571.001	Bearing Plate	1	-	-	-	-			
53						6		64	5946577.001	Axle	1	-	-	-	-			
54						6		63	5946578.001	Axle	1	-	-	-	-			
55						6		69	5946582.001	Swing	1	-	-	-	-			
56	3							17.1	5954014.001	Metal Cover	1	-	-	-	-			118490
57				4				35	5954020.001	Control Panel	1	-	-	C	D			
58							8	97	5954024.001	Ribbon Sensor	1	-	-	C	D			
59				4				34	5954025.001	Control Panel Cover	1	-	-	-	-			
60				4				30	5954026.001	Holder	1	-	-	-	-			

PU Package unit

SPR Recommendation

A - wearing parts and accessories

B - recommended spare parts for quick repair

C - recommended spare parts for distributors

D - recommended spare parts for central stores

Pos.	Figure/Page				Nr.	Part No.	Description	PU	SPR				Notes	Serial No.	
														from	to
61		4			28	5954027.001	Cable Control Panel	1	-	-	C	D			
62		5			42	5954060.001	Pivot Arm	1	-	-	-	-			
63		6			70	5954090.001	Label Sensor	1	-	-	C	D			
64	4				19	5954095.001	Cable Periphery	1	-	-	-	-			
65	4				27	5954097.001	Cable Control Panel	1	-	-	-	D			
66		5	6	8	36	5954098.001	Cable Sensors	1	-	-	-	-			
67		6			77	5954103.001	Drive Roller DR8	1	A	B	C	D			
68		5			56	5954107.001	Printhead 8/300	1	A	B	C	D			
69				8	108	5954112.001	Wall Spacer	1	-	-	-	-			
70				8	105	5954115.001	Gear 42	1	-	-	-	-			
71				8	107	5954120.001	Wall Spacer	1	-	-	-	-			
72				8	112	5954121.001	Cone	1	-	-	-	D			
73				8	110	5954124.001	Snap Ring	10	-	B	C	D			
74				8	101	5954131.001	Spring	5	-	-	-	-			
75	4				26	5954132.001	Strip	5	-	-	-	-			
76		5			50	5954134.001	Bracket	1	-	-	-	-			
77				8	104	5954152.001	Slipping Clutch	1	-	-	C	D			
78				8	98	5954153.001	Brake	1	-	-	C	D			
79				7	86	5954160.001	Belt Tension Bracket	1	-	-	-	-			
80	4				21	5954179.001	Cover Plate	1	-	-	-	-			
81				7	91	5954182.001	Shaft	1	-	-	-	-			
82			6		78	5954186.001	Side Plate	1	-	-	-	-			
83				8	111	5954221.001	Shell	3	-	-	-	D			
84		5			49	5954239.001	Spring	1	-	-	-	-			
85		5			51	5954261.001	Bracket	1	-	-	-	-			
86	3				2	5954399.001	Cover Plate	1	-	-	-	-			
87	4				32	5955034.001	PCB Navi Button	1	-	-	C	D			
88	4				22	5955046.001	Power Input Module	1	-	-	-	-			
89	4				23	5956220.001	Power Supply	1	-	B	C	D			
90		5			46	5958510.001	Profile	1	-	-	-	-			
91			6		75	5958511.001	Profile	1	-	-	-	-			
92		5			44	5958513.001	Roller Ribbon	1	-	-	-	-			
93		5			53	5958514.001	Roller	1	-	-	-	-			
94				8	109	5958516.001	Axle	1	-	-	-	-			
95				8	113	5958517.001	Extension	1	-	-	-	-			
96		5			55	5958521.001	Printhead Mounting Bracket	1	-	-	-	-			
97				8	115	5958523.001	Pin	1	-	-	-	-			
98	3				11	5958525.001	Support Plate	1	-	-	-	-			
99				8	117	5958526.001	Ribbon Takeup Hub	1	-	-	-	-			
100				8	116	5958527.001	Ribbon Supply Hub	1	-	-	-	-			
101		5			45	5958528.001	Printhead Locking System	1	-	-	-	-			
102		5			59	5958529.001	Lever	1	-	-	-	-			
103		5			38	5958530.001	Cable Printhead	1	-	-	C	D			
104		5			37	5958531.001	Cable Printhead	1	-	-	C	D			
105				7	84	5959611.001	Adapter 75	1	-	-	-	-			
106				7	81	5959612.001	Adapter 75	1	-	-	-	-			
107				7	82	5959624.001	Knurled Screw	1	-	-	-	-			
108	3				16	5959732.001	Threaded Plate	1	-	-	-	-	118491		
109		5			57	5959742.001	Side Plate	1	-	-	-	-			
110				7	80	5959808.001	Media Holder	1	-	-	-	-			
111				7	85	5959937.001	Margin Stop	1	-	-	-	-			
112	3				15	5965848.001	Hinge	1	-	-	-	-	118491		
113	3				12	5969310.001	Cover	1	-	-	-	-			
114	3				4	5969316.001	Base Plate	1	-	-	-	-			
115	3				17.2	5969323.001	Metal Cover	1	-	-	-	-	118491		
116	3				14	5969326.001	Screw M4x10	10	-	-	-	-	118491		
117	3				13	5969328.001	Screw M4x20	10	-	-	-	-	118491		
118				7	83	8910053.001	Square Nut M4 8mm	10	-	-	-	-			

PU Package unit

SPR Recommendation

A - wearing parts and accessories

B - recommended spare parts for quick repair

C - recommended spare parts for distributors

D - recommended spare parts for central stores

Pos.	Figure/Page	Nr.	Part No.	Description	PU	SPR				Notes	Serial No.	
											from	to
119		-	5550611.001	Power Cable Type E+F	1	-	-	-	-			
120		-	5901655.001	Cable USB	1	-	-	-	-			
121		-	9109294.001	Packaging	1	-	-	-	-			

PU Package unit

SPR Recommendation

A - wearing parts and accessories

B - recommended spare parts for quick repair

C - recommended spare parts for distributors

D - recommended spare parts for central stores