

Spare Parts List



Stroke Applicator

HQ 4114 / HQ 4116

Family	Type
Stroke Applicator	HQ 4114L-200
	HQ 4114L-300
	HQ 4114L-400
	HQ 4114L-600
	HQ 4114R-200
	HQ 4114R-300
	HQ 4114R-400
	HQ 4114R-600
	HQ 4116L-200
	HQ 4116L-300
	HQ 4116L-400
	HQ 4116L-600
	HQ 4116R-200
	HQ 4116R-300
	HQ 4116R-400
	HQ 4116R-600
	HQ 4014-200 Power reduced
	HQ 4014-300 Power reduced

Table of Contents

1 Retainer Assembly 3
 2 Pneumatics Retainer Assembly 4
 3 Electronics Retainer Assembly 5
 4 Guiding 200 H / 300 H 6
 5 Guiding 400 H / 600 H 7
 6 Cylinder Assembly Guiding Y 8
 7 Cylinder Assembly Z 9
 8 Power Reduced 10
 9 Spare parts register 11
 10 Packaging / Accessories 14

Edition: 10/2025 - Part.-No. 9004039

Copyright

This documentation as well as translation hereof are property of cab Produkttechnik GmbH & Co. KG.

The replication, conversion, duplication or divulgement of the whole manual or parts of it for other intentions than its original intended purpose demand the previous written authorization by cab.

Editor

Regarding questions or comments please contact cab Produkttechnik GmbH & Co. KG.

Topicality

Due to the constant further development of our products discrepancies between documentation and product can occur.

Please check www.cab.de for the latest update.

Terms and conditions

Deliveries and performances are effected under the General conditions of sale of cab.

Germany
cab Produkttechnik GmbH & Co KG
 Karlsruhe
 Phone +49 721 6626 0
www.cab.de

USA
cab Technology, Inc.
 Chelmsford, MA
 Phone +1 978 250 8321
www.cab.de/us

Taiwan
cab Technology Co., Ltd.
 Taipei
 Phone +886 (02) 8227 3966
www.cab.de/tw

Singapore
cab Singapore Pte. Ltd.
 Singapore
 Phone +65 6931 9099
www.cab.de/en

France
cab Technologies S.à.r.l.
 Niedermodern
 Phone +33 388 722501
www.cab.de/fr

Mexico
cab Technology, Inc.
 Juárez
 Phone +52 656 682 4301
www.cab.de/es

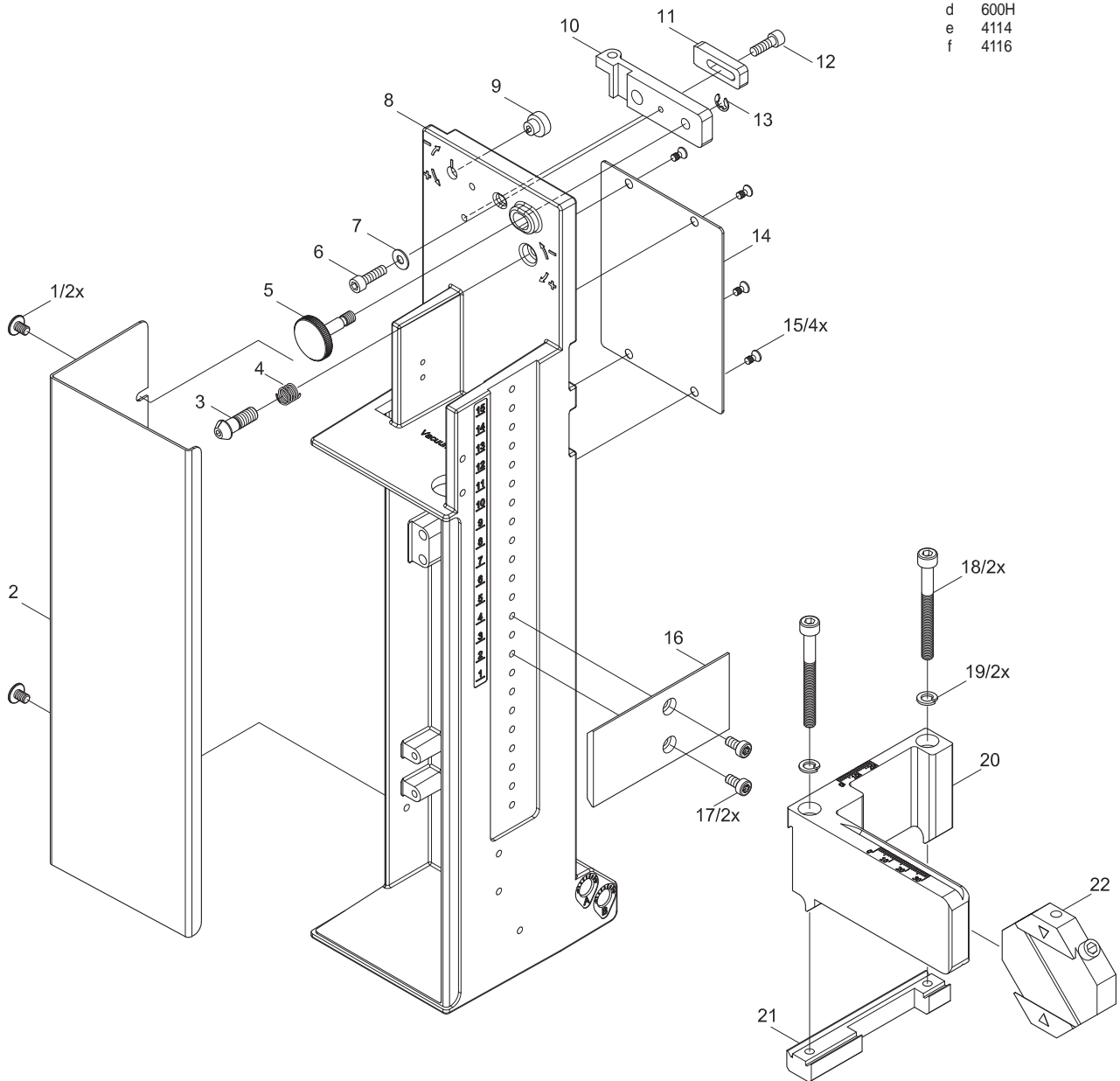
China
cab (Shanghai) Trading Co., Ltd.
 Shanghai
 Phone +86 (021) 6236 3161
www.cab.de/cn

South Africa
cab Technology (Pty) Ltd.
 Randburg
 Phone +27 11 886 3580
www.cab.de/za

No.	Part-No.	Description	PU	Note	Serial No.	
					from	to
1	5902817.001	Screw sim. ISO7380-M4x6	10			
2	5964129.001	Cover	1			
3	5965963.001	Set Screw	1			
4	5904544.001	Spring	10			
5	5964367.001	Knurled Screw	1			
6	5902241.001	Screw DIN7984-M4x10	10			
7	5903003.001	Washer DIN125-A4.3	10			
8.1	5987406.001	Mounting Plate	1	l		
8.2	5987407.001	Mounting Plate	1	r		
9	5966530.001	Eccentric	1			
10.1	5966529.001	Hinges	1	l		
10.2	5966531.001	Hinges	1	r		
11	5964090.001	Interlock	1			
12	5902489.001	Screw DIN7984-M4x8	10			
13	5903525.001	E-Ring DIN 6799-4	10			

No.	Part-No.	Description	PU	Note	Serial No.	
					from	to
14	5971442.001	Plate	1			
15	5902839.001	Screw DIN7991-M3x6	10			
16.1	5964318.001	Adapter Profile	1	a/b		
16.2	5970013.001	Adapter Profile	1	l/c/d		
16.3	5970014.001	Adapter Profile	1	r/c/d		
17	5902837.001	Screw DIN7984-M4x8	10			
18	5902167.001	Screw DIN912-M5x50	10			
19	5903061.001	Lock Washer DIN127-B5	10			
20.1	5964312.001	Crossbeam	1	l/e		
20.2	5964331.001	Crossbeam	1	r/e		
20.3	5964332.001	Crossbeam	1	l/f		
20.4	5964333.001	Crossbeam	1	r/f		
21.1	5964310.001	Clamping Element	1	l		
21.2	5964328.001	Clamping Element	1	r		
22	5964062.001	Binder	1			

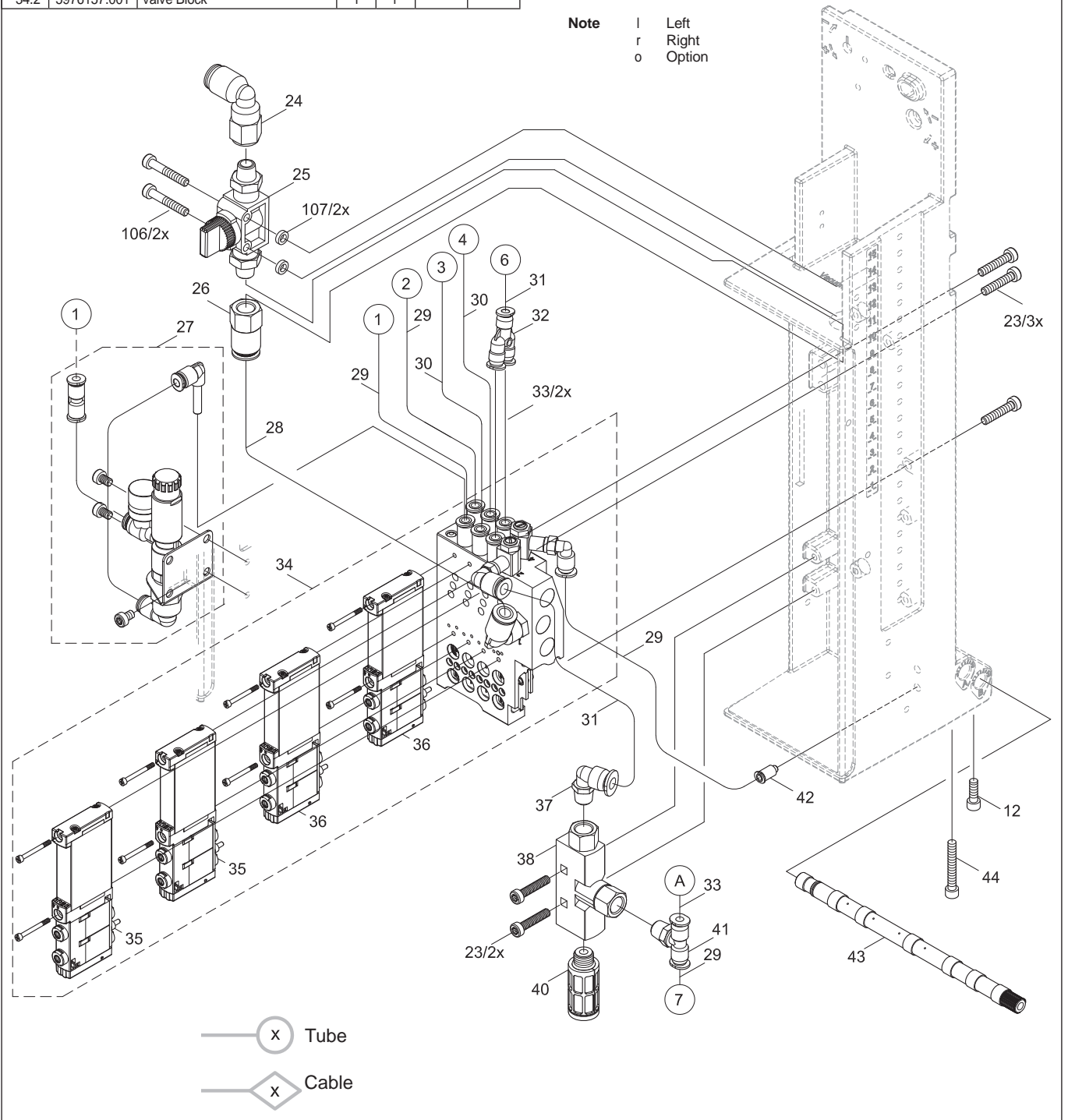
Note
 l Left
 r Right
 a 200H
 b 300H
 c 400H
 d 600H
 e 4114
 f 4116



No.	Part-No.	Description	PU	Note	Serial No.	
					from	to
12	5902489.001	Screw DIN7984-M4x8	10			
23	5902862.001	Screw DIN7984-M4x20	10			
24	5905285.001	Push-in L-Connector	1			
25	5905284.001	Shut-off valve	1			
26	5906842.001	Push-in/threaded Fitting	1			
27	5987755.001	Pressure Control Valve Set	1	o		
28	5966465.001	Tube Ø8	2m			
29	5966460.001	Tube Ø4	2m			
30	5966466.001	Tube Ø4 DUO	2m			
31	5966464.001	Tube Ø6	2m			
32	5905972.001	Push-in Y-Fitting	1			
33	5966463.001	Tube Ø4	2m			
34.1	5976156.001	Valve Block	1	l		
34.2	5976157.001	Valve Block	1	r		

No.	Part-No.	Description	PU	Note	Serial No.	
					from	to
35	5907428.001	Magnetic Valve	1			
36	5907429.001	Magnetic Valve	1			
37	5906914.001	Push-in L-Connector	1			
38	5906844.001	Vacuum Generator	1			
40	5905257.001	Silencer	1			
41	5906915.001	Push-in T-Connector	1			
42	5905283.001	Push-in/threaded Fitting	1			
43.1	5964277.001	Blow Tube 2"	1			
43.2	5964095.001	Blow Tube 4"	1			
43.3	5964614.001	Blow Tube 6"	1			
44	5902420.001	Screw DIN7984-M4x20	10			
106	5902863.001	Screw DIN7984-M4x25	10			
107	5900524.001	Distance Bush	10			

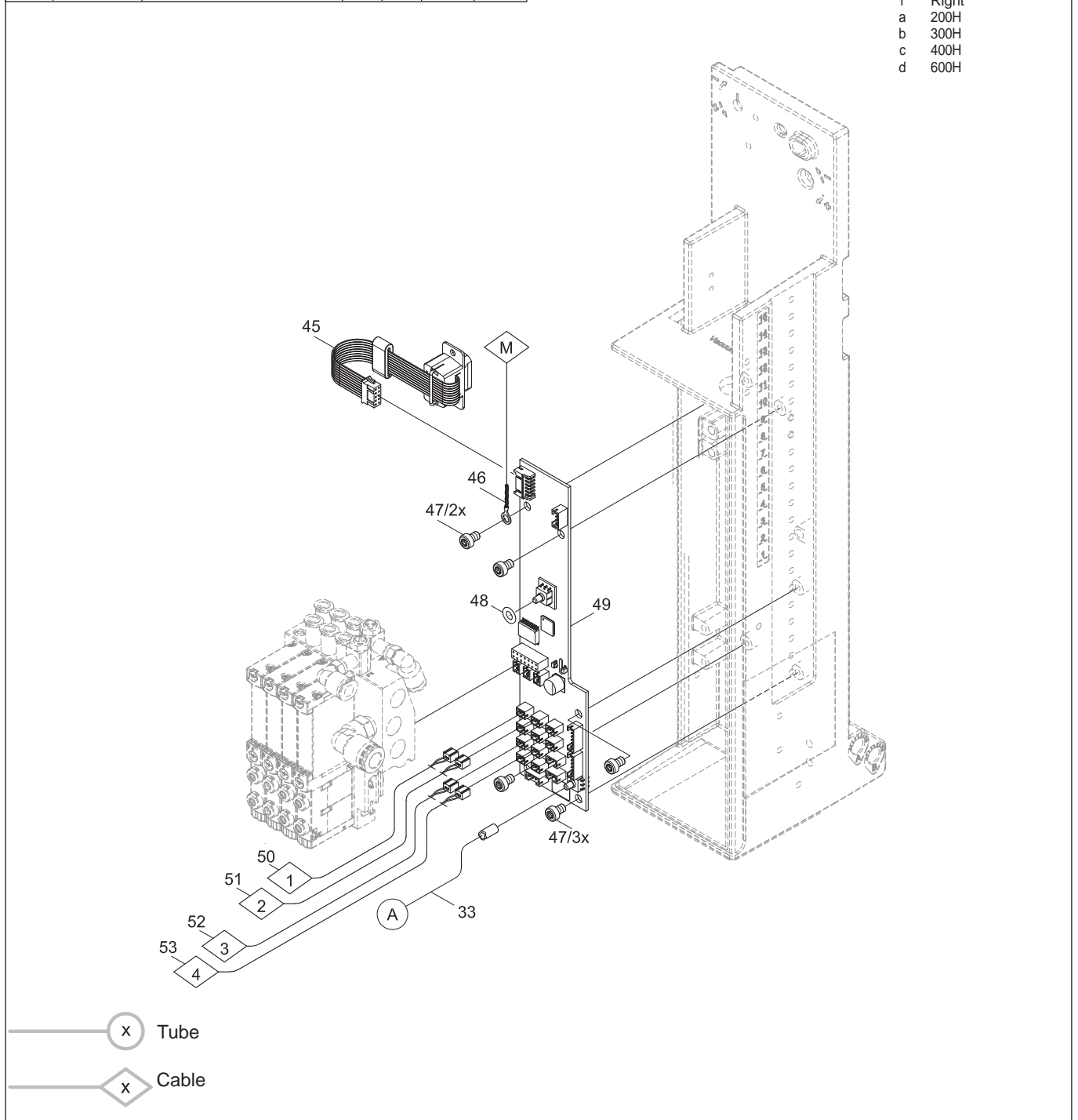
Note
 l Left
 r Right
 o Option



No.	Part-No.	Description	PU	Note	Serial No.	
					from	to
33	5966463.001	Tube Ø4	2m			
45	5555267.001	Cable	1			
46.1	5964590.001	Cable	1	a		
46.2	5964591.001	Cable	1	b		
46.3	5964592.001	Cable	1	c		
46.4	5971988.001	Cable	1	d		
47	5902571.001	Screw DIN7984-M4x6	10			
48	5906943.001	Sealing Ring	10			
49.1	5550228.001	PCB Applicator Control	1	l		
49.2	5550231.001	PCB Applicator Control	1	r		
50.1	5964454.001	Sensor	1	a		
50.2	5964494.001	Sensor	1	b		
50.3	5964495.001	Sensor	1	c		
50.4	5971431.001	Sensor	1	d		

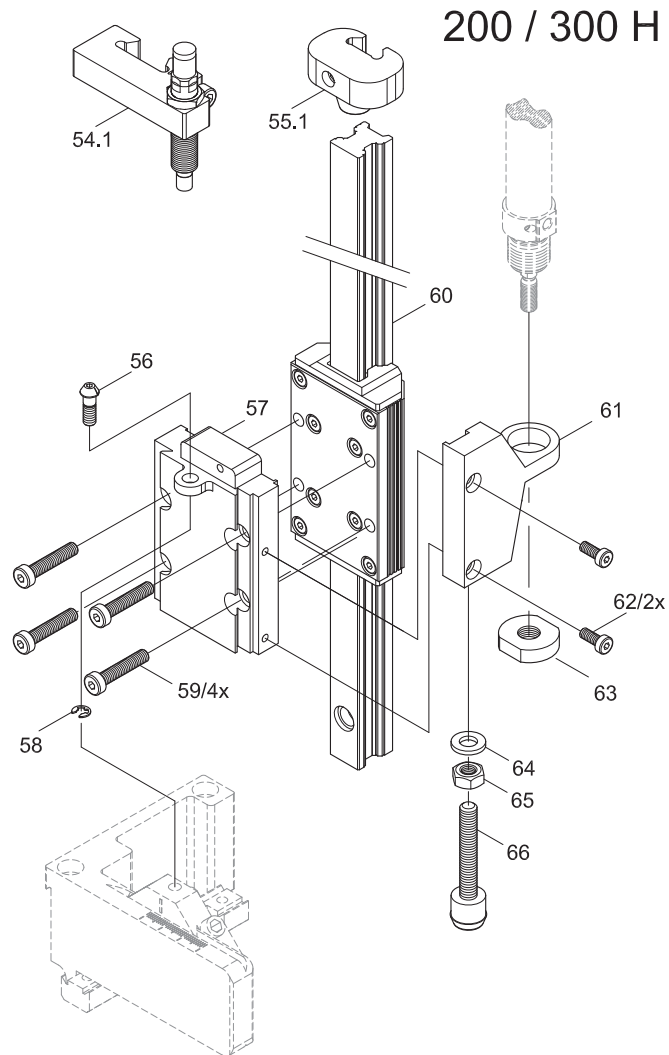
No.	Part-No.	Description	PU	Note	Serial No.	
					from	to
51.1	5964490.001	Sensor	1	a		
51.2	5964594.001	Sensor	1	b		
51.3	5964595.001	Sensor	1	c		
51.4	5971432.001	Sensor	1	d		
52.1	5971186.001	Sensor	1	a		
52.2	5971187.001	Sensor	1	b		
52.3	5971188.001	Sensor	1	c		
52.4	5971433.001	Sensor	1	d		
53.1	5971189.001	Sensor	1	a		
53.2	5971193.001	Sensor	1	b		
53.3	5971194.001	Sensor	1	c		
53.4	5971434.001	Sensor	1	d		

Note
 l Left
 r Right
 a 200H
 b 300H
 c 400H
 d 600H



No.	Part-No.	Description	PU	Note	Serial No.	
					from	to
54.1	5979483.001	Stopper	1	a/b/o		
55.1	5979353.001	Stopper	1	a/b		
56	5964061.001	Set Screw	1			
57.1	5979349.001	Plate	1	l/a/b		
57.2	5979417.001	Plate	1	r/a/b		
58	5903505.001	E-Ring DIN6799-5	10			
59	5902827.001	Screw DIN7984-M5x25	10			
60.1	5979331.001	Guide Rail with Carriage	1	a		
60.2	5979342.001	Guide Rail with Carriage	1	b		
61.1	5964301.001	Holder	1	l/a/b/c		
61.2	5964336.001	Holder	1	r/a/b/c		
62	5902562.001	Screw DIN7984 M4x14	10			
63	5521159.001	Nut	1			
64	5903040.001	Washer DIN125-A6,4	10			
65	5902504.001	Nut DIN934-M6	10			
66	5964349.001	Stopper	1			

Note
 l Left
 r Right
 a 200H
 b 300H
 o Option



— (x) Tube

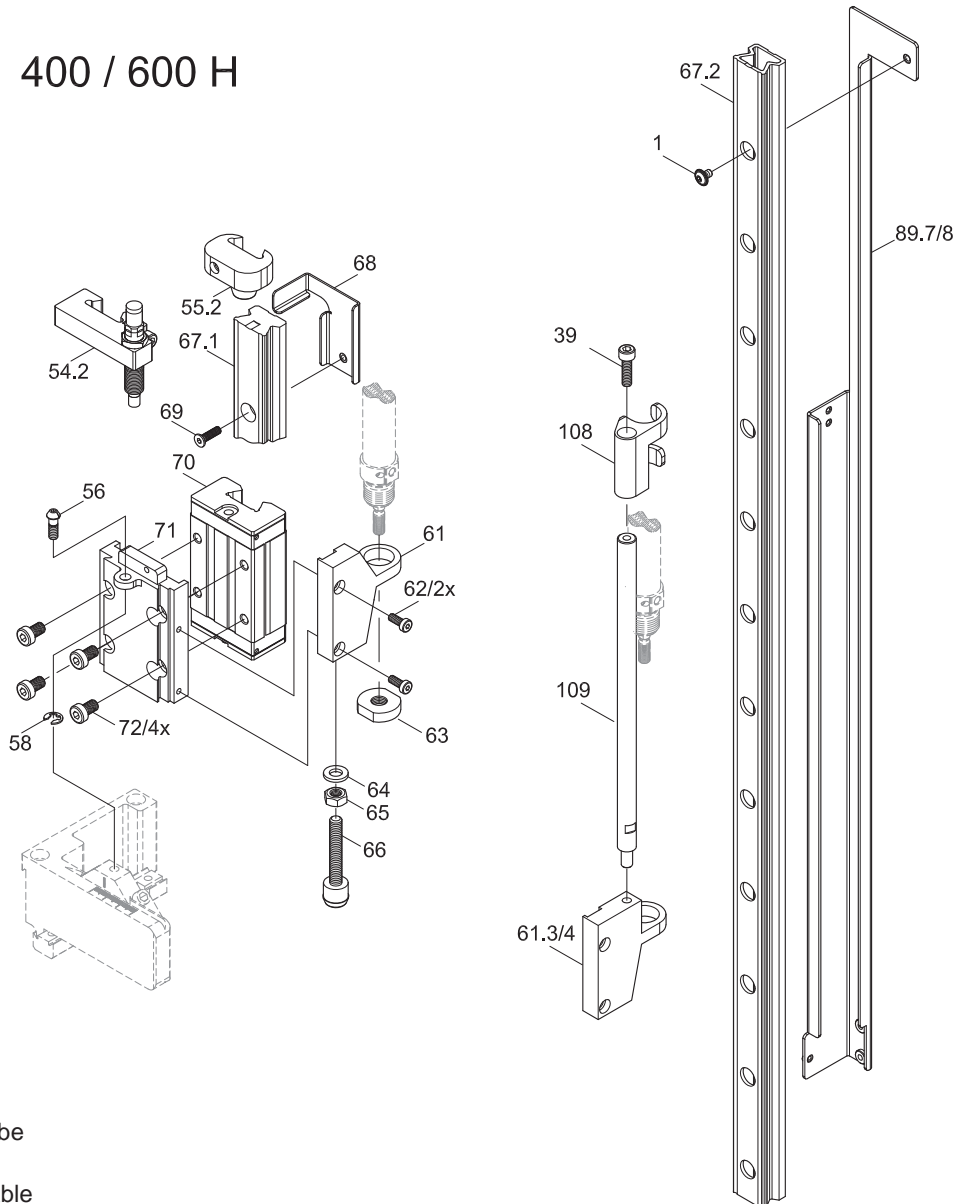
— (x) Cable

No.	Part-No.	Description	PU	Note	Serial No.	
					from	to
1	5902817.001	Screw sim. ISO7380-M4x6	10			
39	5902225.001	Screw DIN912 M5x18	10	d		
54.2	5964343.001	Stopper	1	c/d/o		
55.2	5964364.001	Stopper	1	c/d		
56	5964061.001	Set Screw	1			
58	5903505.001	E-Ring DIN6799-5	10			
61.1	5964301.001	Holder	1	l/a/b/c		
61.2	5964336.001	Holder	1	r/a/b/c		
61.3	5971422.001	Holder	1	l/d		
61.4	5971426.001	Holder	1	r/d		
62	5902562.001	Screw DIN7984 M4x14	10			
63	5521159.001	Nut	1			
64	5903040.001	Washer DIN125-A6,4	10			
65	5902504.001	Nut DIN934-M6	10			

No.	Part-No.	Description	PU	Note	Serial No.	
					from	to
66	5964349.001	Stopper	1			
67.1	5979307.001	Guide Rail	1	c		
67.2	5966174.001	Guide Rail	1	d		
68.1	5966524.001	Bracket	1	l/c		
68.2	5966528.001	Bracket	1	r/c		
69	5902143.001	Screw DIN7991-M4x16	10			
70	5965966.001	Sliding Carriage	1			
71.1	5964302.001	Plate	1	l/c		
71.2	5964337.001	Plate	1	r/c		
72	5902375.001	Screw DIN7984-M6x10	10			
89.7	5987653.001	Bracket	1	l/d		
89.8	5987666.001	Bracket	1	r/d		
108	5971424.001	Holder Cylinder	1	d		
109	5971423.001	Rod	1	d		

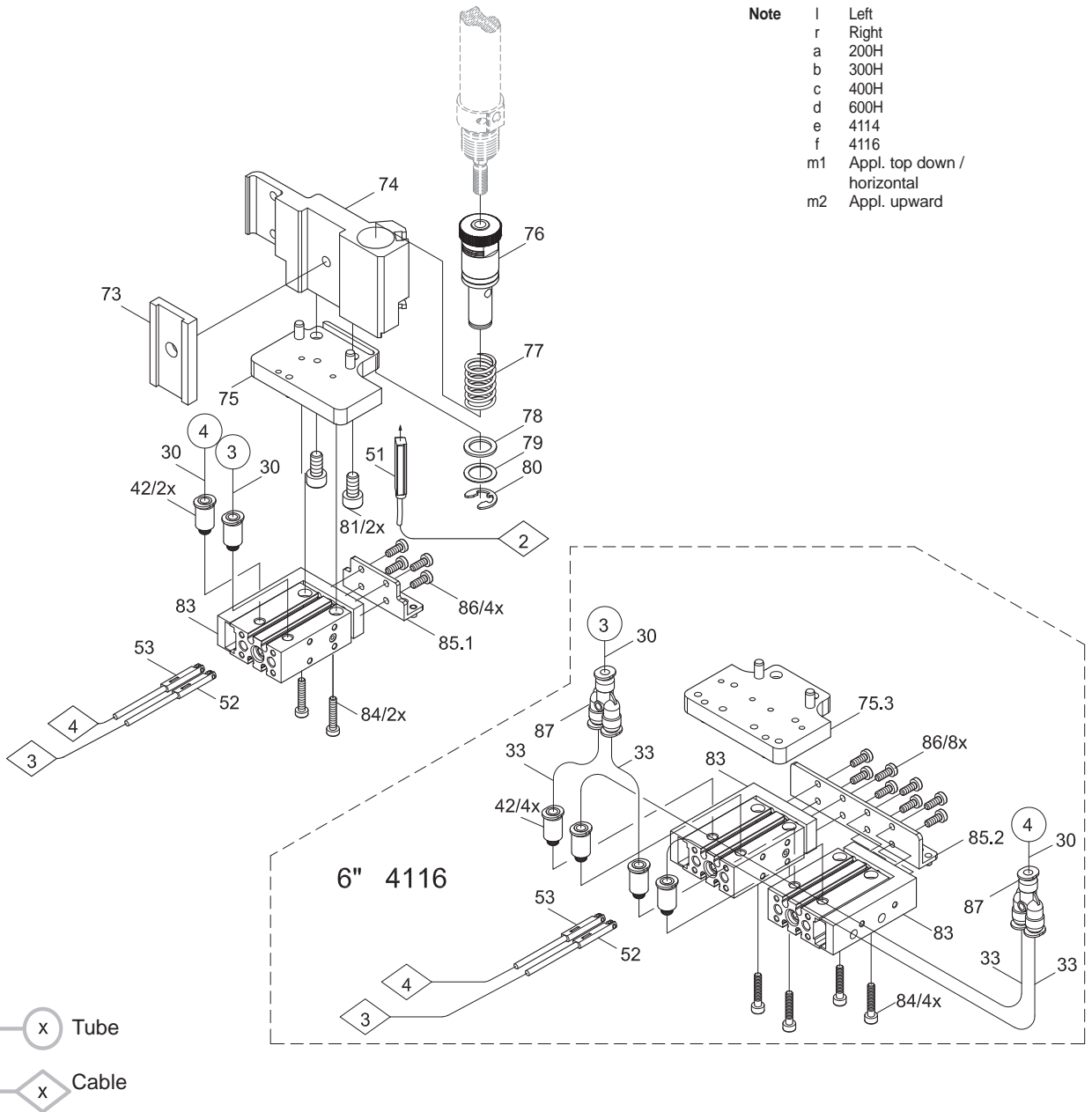
Note
 l Left
 r Right
 c 400H
 d 600H

400 / 600 H



No.	Part-No.	Description	PU	Note	Serial No.	
					from	to
30	5966466.001	Tube Ø4 DUO	2m			
33	5966463.001	Tube Ø4	2m			
51.1	5964490.001	Sensor	1	a		
51.2	5964594.001	Sensor	1	b		
51.3	5964595.001	Sensor	1	c		
51.4	5971432.001	Sensor	1	d		
52.1	5971186.001	Sensor	1	a		
52.2	5971187.001	Sensor	1	b		
52.3	5971188.001	Sensor	1	c		
52.4	5971433.001	Sensor	1	d		
53.1	5971189.001	Sensor	1	a		
53.2	5971193.001	Sensor	1	b		
53.3	5971194.001	Sensor	1	c		
53.4	5971434.001	Sensor	1	d		
73	5979327.001	Adapter Rail	1			
74.1	5964236.001	Tamp Retainer	1	l		
74.2	5964241.001	Tamp Retainer	1	r		

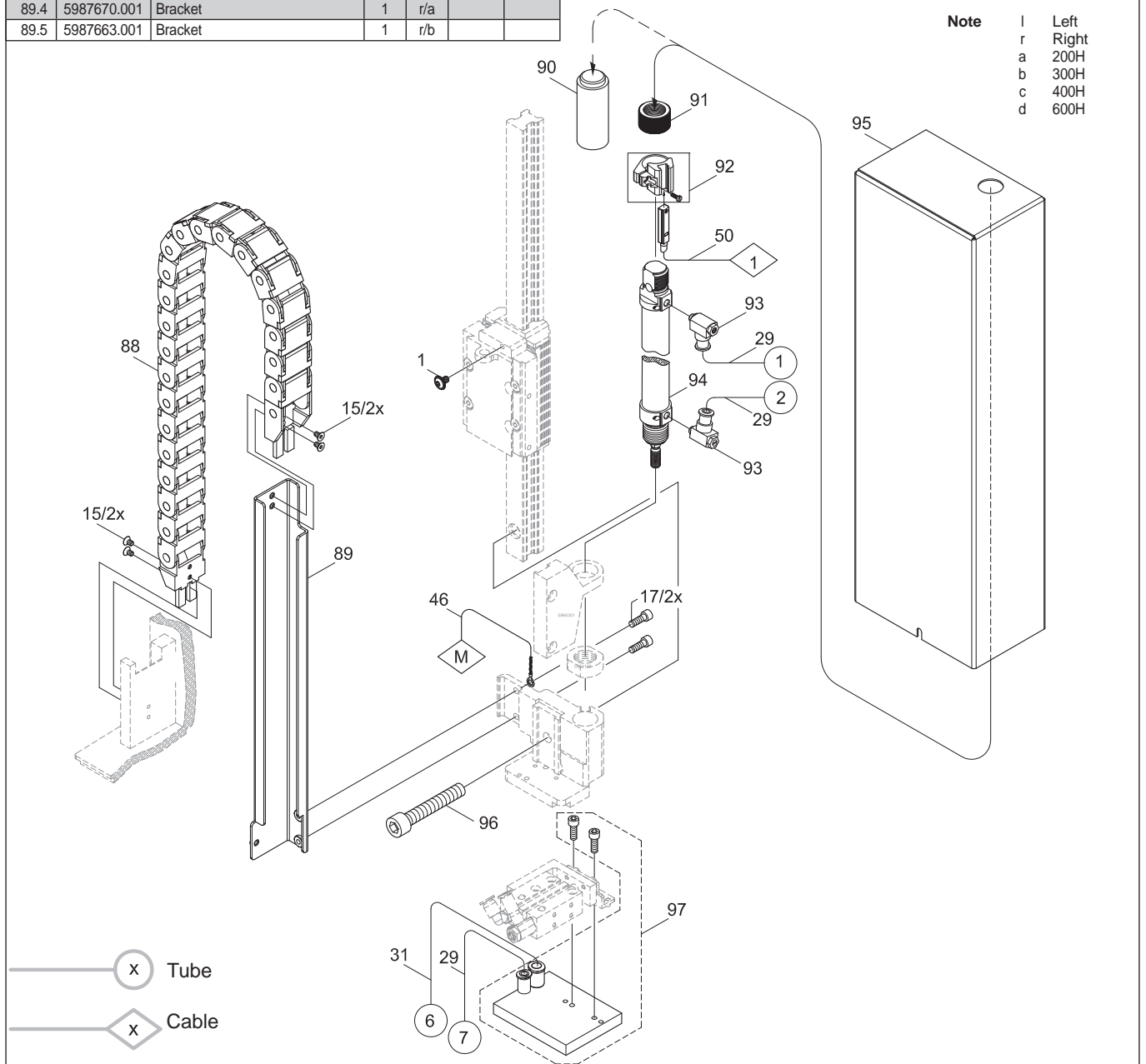
No.	Part-No.	Description	PU	Note	Serial No.	
					from	to
75.1	5964246.001	Plate	1	l/e		
75.2	5964247.001	Plate	1	r/d		
75.3	5971163.001	Plate	1	f		
76	5955707.001	Adapter Bolt	1			
77.1	5905069.001	Spring	1	m1		
77.2	5905049.001	Spring	1	m2		
78	5521157.001	Washer	1			
79	5521158.001	Washer	1			
80	5903501.001	E-Ring DIN6799-7	10			
81	5902910.001	Screw DIN7984-M5x10	10			
82	5905283.001	Push-in/threaded Fitting	1			
83	5906690.001	Mini Slide Cylinder	1			
84	5902888.001	Screw DIN7984-M3x16	10			
85.1	5964456.001	Adapter	1	4"		
85.2	5974610.001	Adapter	1	6"		
86	5902867.001	Screw DIN7984-M3x8	10			
87	5905371.001	Push-in Y-Fitting	1	6"		



No.	Part-No.	Description	PU	Note	Serial No.	
					from	to
1	5902817.001	Screw sim. ISO7380-M4x6	10			
15	5902839.001	Screw DIN7991-M3x6	10			
17	5902837.001	Screw DIN7984-M4x8	10			
29	5966460.001	Tube Ø4	2m			
31	5966464.001	Tube Ø6	2m			
46.1	5964590.001	Cable	1	a		
46.2	5964591.001	Cable	1	b		
46.3	5964592.001	Cable	1	c		
46.4	5971988.001	Cable	1	d		
50.1	5964454.001	Sensor	1	a		
50.2	5964494.001	Sensor	1	b		
50.3	5964495.001	Sensor	1	c		
50.4	5971431.001	Sensor	1	d		
88.1	5987679.001	Energy Track	1	a		
88.2	5987647.001	Energy Track	1	b		
88.3	5987680.001	Energy Track	1	c		
88.4	5987682.001	Energy Track	1	d		
89.1	5987656.001	Bracket	1	l/a		
89.2	5987645.001	Bracket	1	l/b		
89.3	5987655.001	Bracket	1	l/c		
89.4	5987670.001	Bracket	1	r/a		
89.5	5987663.001	Bracket	1	r/b		

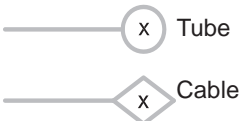
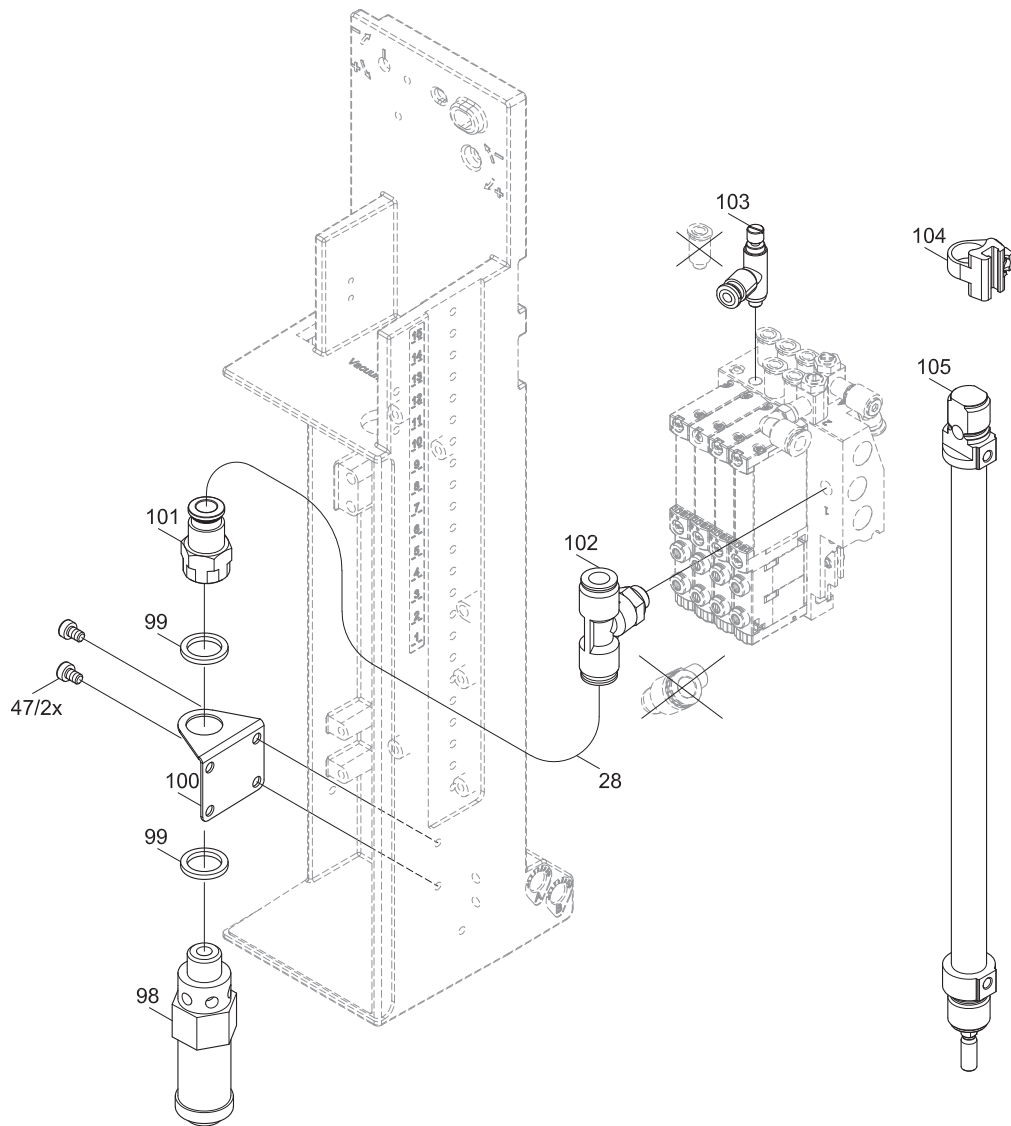
No.	Part-No.	Description	PU	Note	Serial No.	
					from	to
89.6	5987664.001	Bracket	1	r/c		
90	5964443.001	Bolt	1	a		
91	5964489.001	Knurled Nut	1	b/c		
92	5905593.001	Mounting Clip	1			
93	5906636.001	One-way Flow Control Valve	1			
94.1	5906938.001	Cylinder	1	a		
94.2	5905973.001	Cylinder	1	b		
94.3	5906117.001	Cylinder	1	c		
94.4	5906731.001	Cylinder	1	d		
95.1	5964440.001	Cover	1	l/a		
95.2	5964483.001	Cover	1	l/b		
95.3	5964484.001	Cover	1	l/c		
95.4	5964451.001	Cover	1	r/a		
95.5	5964453.001	Cover	1	r/b		
95.6	5964485.001	Cover	1	r/c		
96.1	5902895.001	Screw DIN7984-M 6x30	10	a/b		
96.2	5909043.001	Screw DIN7984-M6x20	10	c		
96.3	5902487.001	Screw DIN7984-M6x14	10			
97		Tamp, customized				

Note
 l Left
 r Right
 a 200H
 b 300H
 c 400H
 d 600H



No.	Part-No.	Description	PU	Note	Serial No.	
					from	to
28	5966465.001	Tube Ø8	2m			
47	5902571.001	Screw DIN7984-M4x6	10	o		
98	5907526.001	Safety Valve	1	g		
99	5905130.001	Sealing Ring O-1/4-200	10	l/g		
100	5971731.001	Mount Safety Valve	1	r/g		
101	5907914.001	Push-in Connector	1	g		
102	5905316.001	Push-in T-Connector	1	g		
103	5979239.001	One-way Flow Control Valve	1	g		
104	5907074.001	Mounting Clip	1	g		
105.1	5907889.001	Cylinder	1	g		
105.2	5907890.001	Cylinder	1	g		

Note
 a 200
 b 300
 g Power reduced



Pos	Figure/Page							No.	Part No.	Description	PU	SPR	Notes	Serial No.	
														from	to
1						8		78	5521157.001	Washer	1	-			
2						8		79	5521158.001	Washer	1	-			
3			6	7				63	5521159.001	Nut	1	-			
4			5					49.1	5550228.001	PCB Applicator Control	1	C	l		
5			5					49.2	5550231.001	PCB Applicator Control	1	C	r		
6			5				10	45	5555267.001	Cable	1	-			
7		4						107	5900524.001	Distance Bush	10	-			
8					7			69	5902143.001	Screw DIN7991-M4x16	10	-			
9	3							18	5902167.001	Screw DIN912-M5x50	10	-			
10					7			39	5902225.001	Screw DIN912 M5x18	10	-	d		
11	3							6	5902241.001	Screw DIN7984-M4x10	10	-			
12					7			72	5902375.001	Screw DIN7984-M6x10	10	-			
13		4						44	5902420.001	Screw DIN7984-M4x20	10	-			
14						9		96.3	5902487.001	Screw DIN7984-M6x14	10	-			
15	3	4						12	5902489.001	Screw DIN7984-M4x8	10	-			
16				6	7			65	5902504.001	Nut DIN934-M6	10	-			
17				6	7			62	5902562.001	Screw DIN7984 M4x14	10	-			
18			5					47	5902571.001	Screw DIN7984-M4x6	10	-			
19	3				7	9		1	5902817.001	Screw sim. ISO7380-M4x6	10	-			
20				6				59	5902827.001	Screw DIN7984-M5x25	10	-			
21	3					9		17	5902837.001	Screw DIN7984-M4x8	10	-			
22	3					9		15	5902839.001	Screw DIN7991-M3x6	10	-			
23		4						23	5902862.001	Screw DIN7984-M4x20	10	-			
24								106	5902863.001	Screw DIN7984-M4x25	10	-			
25						8		86	5902867.001	Screw DIN7984-M3x8	10	-			
26						8		84	5902888.001	Screw DIN7984-M3x16	10	-			
27						9		96.1	5902895.001	Screw DIN7984-M 6x30	10	-	a/b		
28						8		81	5902910.001	Screw DIN7984-M5x10	10	-			
29	3							7	5903003.001	Washer DIN125-A4.3	10	-			
30			6	7				64	5903040.001	Washer DIN125-A6,4	10	-			
31	3							19	5903061.001	Lock Washer DIN127-B5	10	-			
32						8		80	5903501.001	E-Ring DIN6799-7	10	-			
33			6	7				58	5903505.001	E-Ring DIN6799-5	10	-			
34	3							13	5903525.001	E-Ring DIN 6799-4	10	-			
35	3							4	5904544.001	Spring	10	C			
36						8		77.2	5905049.001	Spring	1	C	m2		
37						8		77.1	5905069.001	Spring	1	C	m1		
38							10	99	5905130.001	Sealing Ring O-1/4-200	10	B	g		
39		4						40	5905257.001	Silencer	1	A			
40		4				8		42	5905283.001	Push-in/threaded Fitting	1	-			
41		4						25	5905284.001	Shut-off valve	1	-			
42		4						24	5905285.001	Push-in L-Connector	1	-			
43							10	102	5905316.001	Push-in T-Connector	1	-	g		
44						8		87	5905371.001	Push-in Y-Fitting	1	-	f		
45						9		92	5905593.001	Mounting Clip	1	-			
46		4						32	5905972.001	Push-in Y-Fitting	1	-			
47						9		94.2	5905973.001	Cylinder	1	C	b		
48						9		94.3	5906117.001	Cylinder	1	C	c		
49						9		93	5906636.001	One-way Flow Control Valve	1	A			
50						8		83	5906690.001	Mini Slide Cylinder	1	-			
51						9		94.4	5906731.001	Cylinder	1	-	d		
52		4						26	5906842.001	Push-in/threaded Fitting	1	-			
53		4						38	5906844.001	Vacuum Generator	1	-			
54		4						37	5906914.001	Push-in L-Connector	1	-			
55		4						41	5906915.001	Push-in T-Connector	1	-			
56						9		94.1	5906938.001	Cylinder	1	C	a		

PU Package unit

SPR Recommendation

- A - wearing parts and accessories
- B - recommended spare parts for quick repair
- C - recommended spare parts for distributors
- D - recommended spare parts for central stores

The letter mentioned includes the recommendations for the following classifications in the alphabet. For example, B includes the recommendations for C and D.

Note

- l Left
- r Right
- a 200
- b 300
- c 400
- d 600

- e 4114
- f 4116
- g Power reduced
- m1 Appl. top down / horizontal
- m2 Appl. upward
- o Option

Pos	Figure/Page							No.	Part No.	Description	PU	SPR	Notes	Serial No.	
	from	to													
57			5					48	5906943.001	Sealing Ring	10	-			
58							10	104	5907074.001	Mounting Clip	1	-	g		
59		4						35	5907428.001	Magnetic Valve	1	B			
60		4						36	5907429.001	Magnetic Valve	1	B			
61							10	98	5907526.001	Safety Valve	1	-	g		
62							10	105.1	5907889.001	Cylinder	1	-	l/g		
63							10	105.2	5907890.001	Cylinder	1	-	r/g		
64							10	101	5907914.001	Push-in Connector	1	-	g		
65							9	96.2	5909043.001	Screw DIN7984-M6x20	10	-	c		
66						8		76	5955707.001	Adapter Bolt	1	-			
67			6	7				56	5964061.001	Set Screw	1	-			
68	3							22	5964062.001	Binder	1	-			
69	3							11	5964090.001	Interlock	1	-			
70		4						43.2	5964095.001	Blow Tube 4"	1	-			
71	3							2	5964129.001	Cover	1	-			
72						8		74.1	5964236.001	Tamp Retainer	1	-	l		
73						8		74.2	5964241.001	Tamp Retainer	1	-	r		
74						8		75.1	5964246.001	Plate	1	-	l/e		
75						8		75.2	5964247.001	Plate	1	-	r/e		
76		4						43.1	5964277.001	Blow Tube 2"	1	-			
77			6	7				61.1	5964301.001	Holder	1	-	l/a/b/c		
78				7				71.1	5964302.001	Plate	1	-	l/c		
79	3							21.1	5964310.001	Clamping Element	1	-	l		
80	3							20.1	5964312.001	Crossbeam	1	-	l/e		
81	3							16.1	5964318.001	Adapter Profile	1	-	a/b		
82	3							21.2	5964328.001	Clamping Element	1	-	r		
83	3							20.2	5964331.001	Crossbeam	1	-	r/e		
84	3							20.3	5964332.001	Crossbeam	1	-	l/f		
85	3							20.4	5964333.001	Crossbeam	1	-	r/f		
86			6	7				61.2	5964336.001	Holder	1	-	r/a/b/c		
87				7				71.2	5964337.001	Plate	1	-	r/c		
88				7				54.2	5964343.001	Stopper	1	-	c/d/o		
89			6	7				66	5964349.001	Stopper	1	-			
90				7				55.2	5964364.001	Stopper	1	-	c/d		
91	3							5	5964367.001	Knurled Screw	1	-			
92						9		95.1	5964440.001	Cover	1	-	l/a		
93						9		90	5964443.001	Bolt	1	-	a		
94						9		95.4	5964451.001	Cover	1	-	r/a		
95						9		95.5	5964453.001	Cover	1	-	r/b		
96		5						50.1	5964454.001	Sensor	1	-	a		
97						8		85.1	5964456.001	Adapter	1	-	4"		
98						9		95.2	5964483.001	Cover	1	-	l/b		
99						9		95.3	5964484.001	Cover	1	-	l/c		
100						9		95.6	5964485.001	Cover	1	-	r/c		
101						9		91	5964489.001	Knurled Nut	1	-	b/c		
102		5				8		51.1	5964490.001	Sensor	1	C	a		
103		5				9		50.2	5964494.001	Sensor	1	C	b		
104		5				9		50.3	5964495.001	Sensor	1	C	c		
105		5				9		46.1	5964590.001	Cable	1	C	a		
106		5				9		46.2	5964591.001	Cable	1	C	b		
107		5				9		46.3	5964592.001	Cable	1	C	c		
108		5				8		51.2	5964594.001	Sensor	1	C	b		
109		5				8		51.3	5964595.001	Sensor	1	C	c		
110		4						43.3	5964614.001	Blow Tube 6"	1	-			
111	3							3	5965963.001	Set Screw	1	-			
112						7		70	5965966.001	Sliding Carriage	1	-			
113						7		67.2	5966174.001	Guide Rail	1	0	d		

PU Package unit

SPR Recommendation

A - wearing parts and accessories

B - recommended spare parts for quick repair

C - recommended spare parts for distributors

D - recommended spare parts for central stores

The letter mentioned includes the recommendations for the following classifications in the alphabet. For example, B includes the recommendations for C and D.

Note

l Left

r Right

a 200

b 300

c 400

d 600

e 4114

f 4116

g Power reduced

m1 Appl. top down / horizontal

m2 Appl. upward

o Option

Pos	Figure/Page							No.	Part No.	Description	PU	SPR	Notes	Serial No.	
														from	to
114		4					9	29	5966460.001	Tube Ø4	2m	B			
115		4	5				8	33	5966463.001	Tube Ø4	2m	B			
116		4					9	31	5966464.001	Tube Ø6	2m	B			
117		4						10	28	5966465.001	2m	B			
118		4					8	30	5966466.001	Tube Ø4 DUO	2m	B			
119							7	68.1	5966524.001	Bracket	1	-	l/c		
120							7	68.2	5966528.001	Bracket	1	-	r/c		
121	3							10.1	5966529.001	Hinges	1	-	l		
122	3							9	5966530.001	Eccentric	1	-			
123	3							10.2	5966531.001	Hinges	1	-	r		
124	3							16.2	5970013.001	Adapter Profile	1	-	l/c/d		
125	3							16.3	5970014.001	Adapter Profile	1	-	r/c/d		
126							8	75.3	5971163.001	Plate	1	-	f		
127		5					8	52.1	5971186.001	Sensor	1	C	a		
128		5					8	52.2	5971187.001	Sensor	1	C	b		
129		5					8	52.3	5971188.001	Sensor	1	C	c		
130		5					8	53.1	5971189.001	Sensor	1	C	a		
131		5					8	53.2	5971193.001	Sensor	1	C	b		
132		5					8	53.3	5971194.001	Sensor	1	-	c		
133							7	61.3	5971422.001	Holder	1	-	l/d		
134							7	109	5971423.001	Rod	1	-	d		
135							7	108	5971424.001	Holder Cylinder	1	-	d		
136							7	61.4	5971426.001	Holder	1	-	r/d		
137		5					9	50.4	5971431.001	Sensor	1	C	d		
138		5					8	51.4	5971432.001	Sensor	1	C	d		
139		5					8	52.4	5971433.001	Sensor	1	C	d		
140		5					8	53.4	5971434.001	Sensor	1	C	d		
141	3							14	5971442.001	Plate	1	C			
142							10	100	5971731.001	Mount Safety Valve	1	-	g		
143		5					9	46.4	5971988.001	Cable	1	C	d		
144							8	85.2	5974610.001	Adapter	1	-	6"		
145		4						34.1	5976156.001	Valve Block	1	-	l		
146		4						34.2	5976157.001	Valve Block	1	-	r		
147							10	103	5979239.001	One-way Flow Control Valve	1	-	g		
148							7	67.1	5979307.001	Guide Rail	1	-	c		
149							8	73	5979327.001	Adapter Rail	1	-			
150			6					60.1	5979331.001	Guide Rail with Carriage	1	-	a		
151			6					60.2	5979342.001	Guide Rail with Carriage	1	-	b		
152			6					57.1	5979349.001	Plate	1	-	l/a/b		
153			6					55.1	5979353.001	Stopper	1	-	a/b		
154			6					57.2	5979417.001	Plate	1	-	r/a/b		
155			6					54.1	5979483.001	Stopper	1	-	a/b/o		
156	3							8.1	5987406.001	Mounting Plate	1	-	l		
157	3							8.2	5987407.001	Mounting Plate	1	-	r		
158							9	89.2	5987645.001	Bracket	1	-	l/b		
159							9	88.2	5987647.001	Energy Track	1	-	b		
160							7	89.7	5987653.001	Bracket	1	-	l/d		
161							9	89.3	5987655.001	Bracket	1	-	l/c		
162							9	89.1	5987656.001	Bracket	1	-	l/a		
163							9	89.5	5987663.001	Bracket	1	-	r/b		
164							9	89.6	5987664.001	Bracket	1	-	r/c		
165							7	89.8	5987666.001	Bracket	1	-	r/d		
166							9	89.4	5987670.001	Bracket	1	-	r/a		
167							9	88.1	5987679.001	Energy Track	1	-	a		
168							9	88.3	5987680.001	Energy Track	1	-	c		
169							9	88.4	5987682.001	Energy Track	1	-	d		
170		4						27	5987755.001	Pressure Control Valve Set	1	-	o		

PU Package unit

SPR Recommendation

- A - wearing parts and accessories
- B - recommended spare parts for quick repair
- C - recommended spare parts for distributors
- D - recommended spare parts for central stores

The letter mentioned includes the recommendations for the following classifications in the alphabet. For example, B includes the recommendations for C and D.

Note

- l Left
- r Right
- a 200
- b 300
- c 400
- d 600

- e 4114
- f 4116
- g Power reduced
- m1 Appl. top down / horizontal
- m2 Appl. upward
- o Option

Pos	Figure/Page							No.	Part No.	Description	PU	SPR	Notes	Serial No.	
														from	to
171							9	97		Tamp, customized					
172									9109134.001	Packaging	1	-	a/b/c		
173									5970995.001	Packaging	1	-	d		

PU Package unit

SPR Recommendation

- A - wearing parts and accessories
- B - recommended spare parts for quick repair
- C - recommended spare parts for distributors
- D - recommended spare parts for central stores

The letter mentioned includes the recommendations for the following classifications in the alphabet. For example, B includes the recommendations for C and D.

Note

- l Left
- r Right
- a 200
- b 300
- c 400
- d 600

- e 4114
- f 4116
- g Power reduced
- m1 Appl. top down / horizontal
- m2 Appl. upward
- o Option