

Spare Parts List



Stroke-Blow Applicator

4614

Family	Type
Stroke-Blow Applicator	4614-200L
	4614-300L
	4614-400L
	4614-200R
	4614-300R
	4614-400R

Table of Contents

- 1 Retainer Assembly 3
- 2 Pneumatics Retainer Assembly 4
- 3 Electronics Retainer Assembly 5
- 4 Guiding Cylinder Assembly 200/300 6
- 5 Guiding Cylinder Assembly 400 7
- 6 Cylinder Assembly Z 200/300 8
- 7 Cylinder Assembly Z 400 9
- 8 Spare parts register 10
- 9 Packaging / Accessories 12

Edition: 03/2023 - Part.-No. 9003876

Copyright

This documentation as well as translation hereof are property of cab Produkttechnik GmbH & Co. KG.

The replication, conversion, duplication or divulgement of the whole manual or parts of it for other intentions than its original intended purpose demand the previous written authorization by cab.

Editor

Regarding questions or comments please contact cab Produkttechnik GmbH & Co. KG.

Topicality

Due to the constant further development of our products discrepancies between documentation and product can occur. Please check www.cab.de for the latest update.

Terms and conditions

Deliveries and performances are effected under the General conditions of sale of cab.

Germany
cab Produkttechnik GmbH & Co KG
Karlsruhe
Phone +49 721 6626 0
www.cab.de

USA
cab Technology, Inc.
Chelmsford, MA
Phone +1 978 250 8321
www.cab.de/us

Taiwan
cab Technology Co., Ltd.
Taipei
Phone +886 (02) 8227 3966
www.cab.de/tw

Singapore
cab Singapore Pte. Ltd.
Singapore
Phone +65 6931 9099
www.cab.de/en

France
cab Technologies S.à.r.l.
Niedermodern
Phone +33 388 722501
www.cab.de/fr

Mexico
cab Technology, Inc.
Juárez
Phone +52 656 682 4301
www.cab.de/es

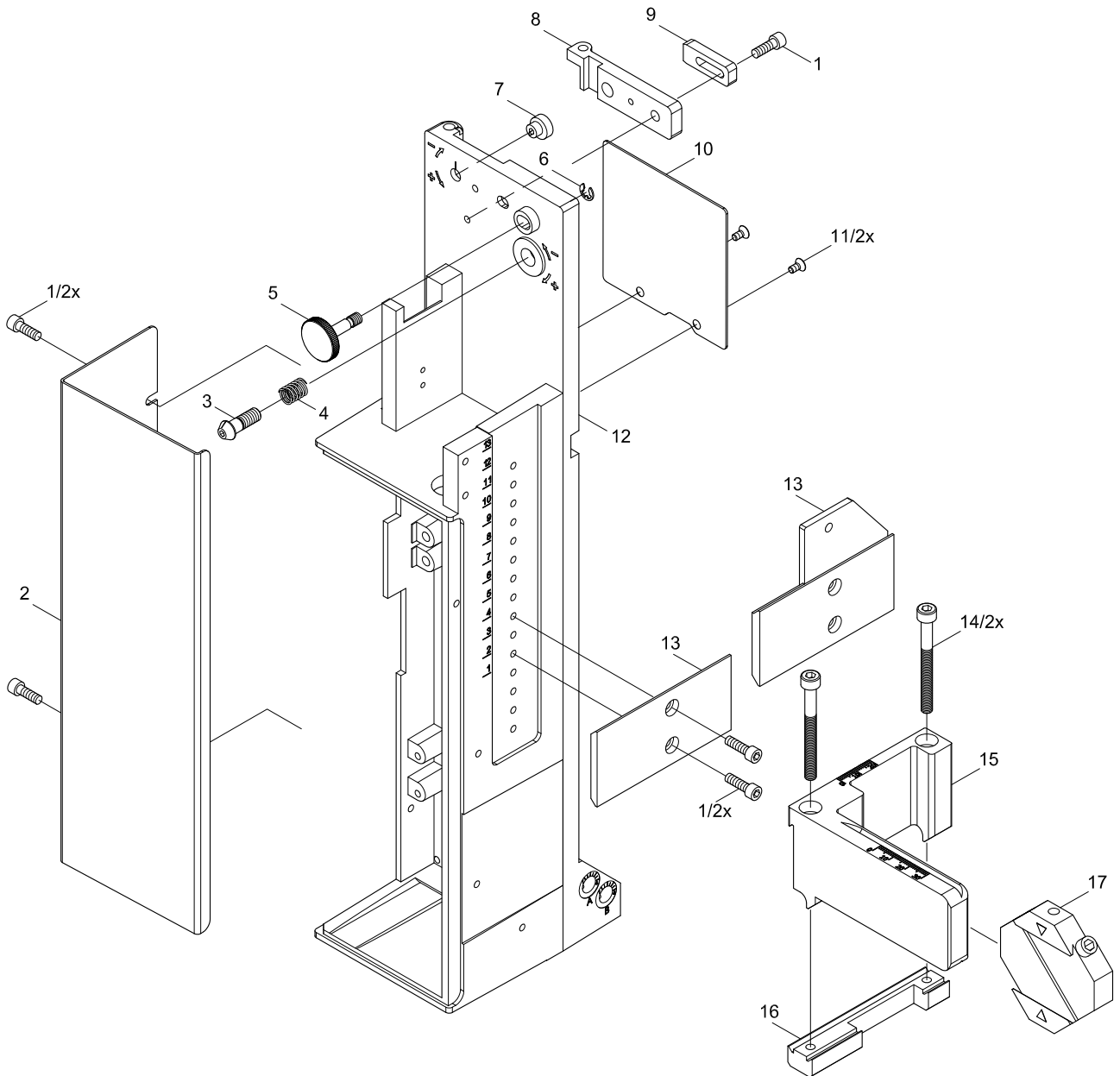
China
cab (Shanghai) Trading Co., Ltd.
Shanghai
Phone +86 (021) 6236 3161
www.cab.de/cn

South Africa
cab Technology (Pty) Ltd.
Randburg
Phone +27 11 886 3580
www.cab.de/za

No.	Part-No.	Description	PU	Note	Serial No.	
					from	to
1	5902489.001	Screw DIN7984-M4x8	10			
2	5964129.001	Cover	1			
3	5965963.001	Set Screw	1			
4	5904544.001	Spring	10			
5	5964367.001	Knurled Screw	1			
6	5903525.001	E-Ring DIN 6799-4	10			
7	5966530.001	Eccentric	1			
8.1	5966529.001	Hinges	1			
8.2	5966531.001	Hinges	1			
9	5964090.001	Interlock	1			
10.1	5964429.001	Plate	1	L		
10.2	5964438.001	Plate	1	R		

No.	Part-No.	Description	PU	Note	Serial No.	
					from	to
11	5902021.001	Screw DIN7991-M3x6	10			
12.1	5964036.001	Mounting Plate	1	L		
12.2	5964185.001	Mounting Plate	1	R		
13.1	5964318.001	Adapter Profile	1	C/D		
13.2	5970013.001	Adapter Profile	1	E/L		
13.3	5970014.001	Adapter Profile	1	E/R		
14	5902167.001	Screw DIN912-M5x50	10			
15.1	5964312.001	Crossbeam	1	L		
15.2	5964331.001	Crossbeam	1	R		
16.1	5964310.001	Clamping Element	1	L		
16.2	5964328.001	Clamping Element	1	R		
17	5964062.001	Binder	1			

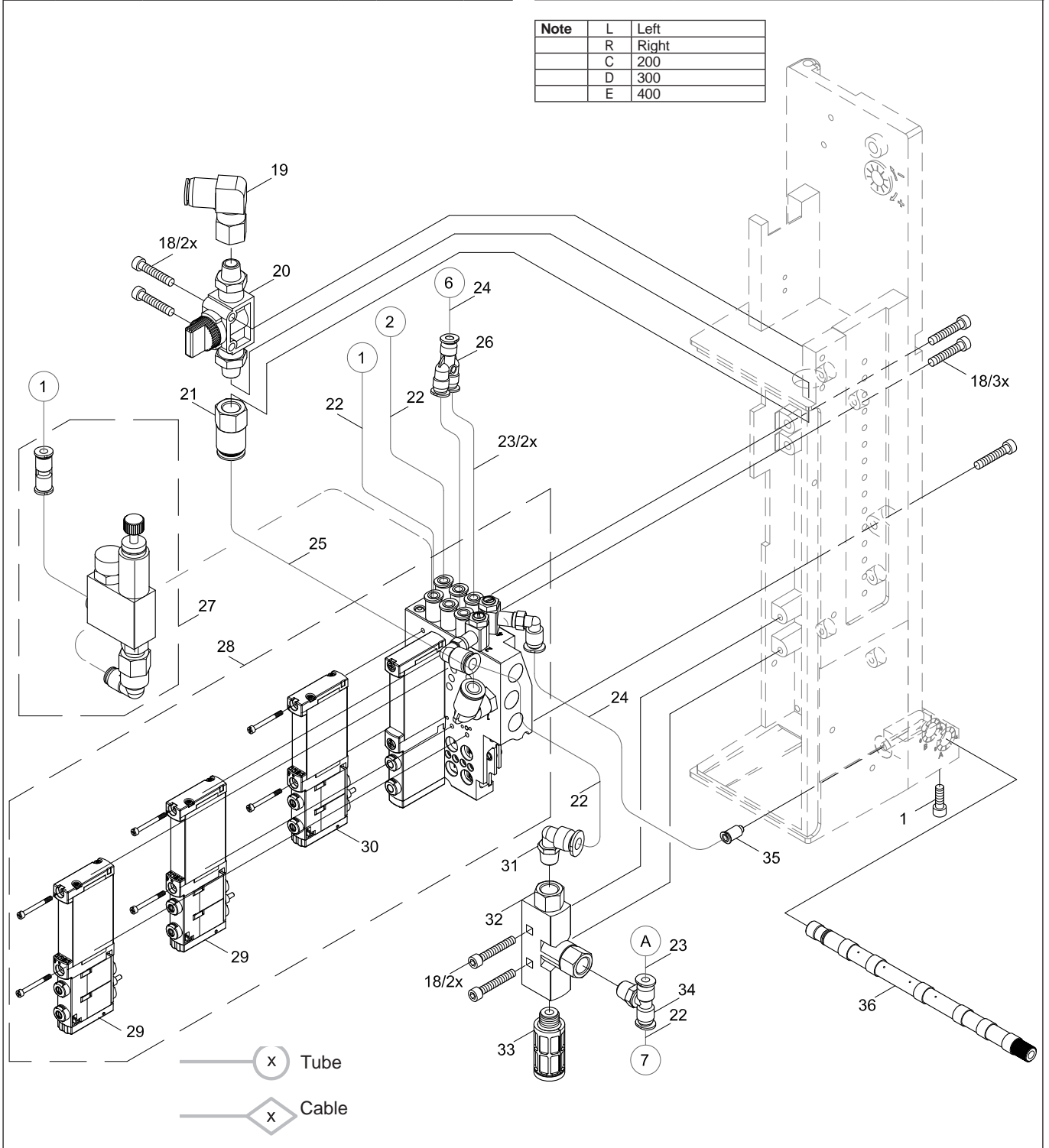
Note	L	Left
	R	Right
	C	200
	D	300
	E	400



No.	Part-No.	Description	PU	Note	Serial No.	
					from	to
1	5902489.001	Screw DIN7984-M4x8	10			
18	5902863.001	Screw DIN7984-M4x25	10			
19	5905285.001	Push-in L-Connector	1			
20	5905284.001	Shut-off valve	1			
21	5906842.001	Push-in/threaded Fitting	1			
22	5966460.001	Tube Ø4	2m			
23	5966463.001	Tube Ø4	2m			
24	5966464.001	Tube Ø6	2m			
25	5966465.001	Tube Ø8	2m			
26	5905972.001	Push-in Y-Fitting	1			
27	5966414.001	Pressure Regulator	1	O		

No.	Part-No.	Description	PU	Note	Serial No.	
					from	to
28.1	5976156.001	Valve Block	1	L		
28.2	5976157.001	Valve Block	1	R		
29	5906021.001	Magnetic Valve	1			
30	5906022.001	Magnetic Valve	1			
31	5906914.001	Push-in L-Connector	1			
32	5906844.001	Vacuum Generator	1			
33	5905257.001	Silencer	1			
34	5906915.001	Push-in T-Connector	1			
35	5905283.001	Push-in/threaded Fitting	1			
36.1	5964277.001	Blow Tube 2"	1			
36.2	5964095.001	Blow Tube 4"	1			

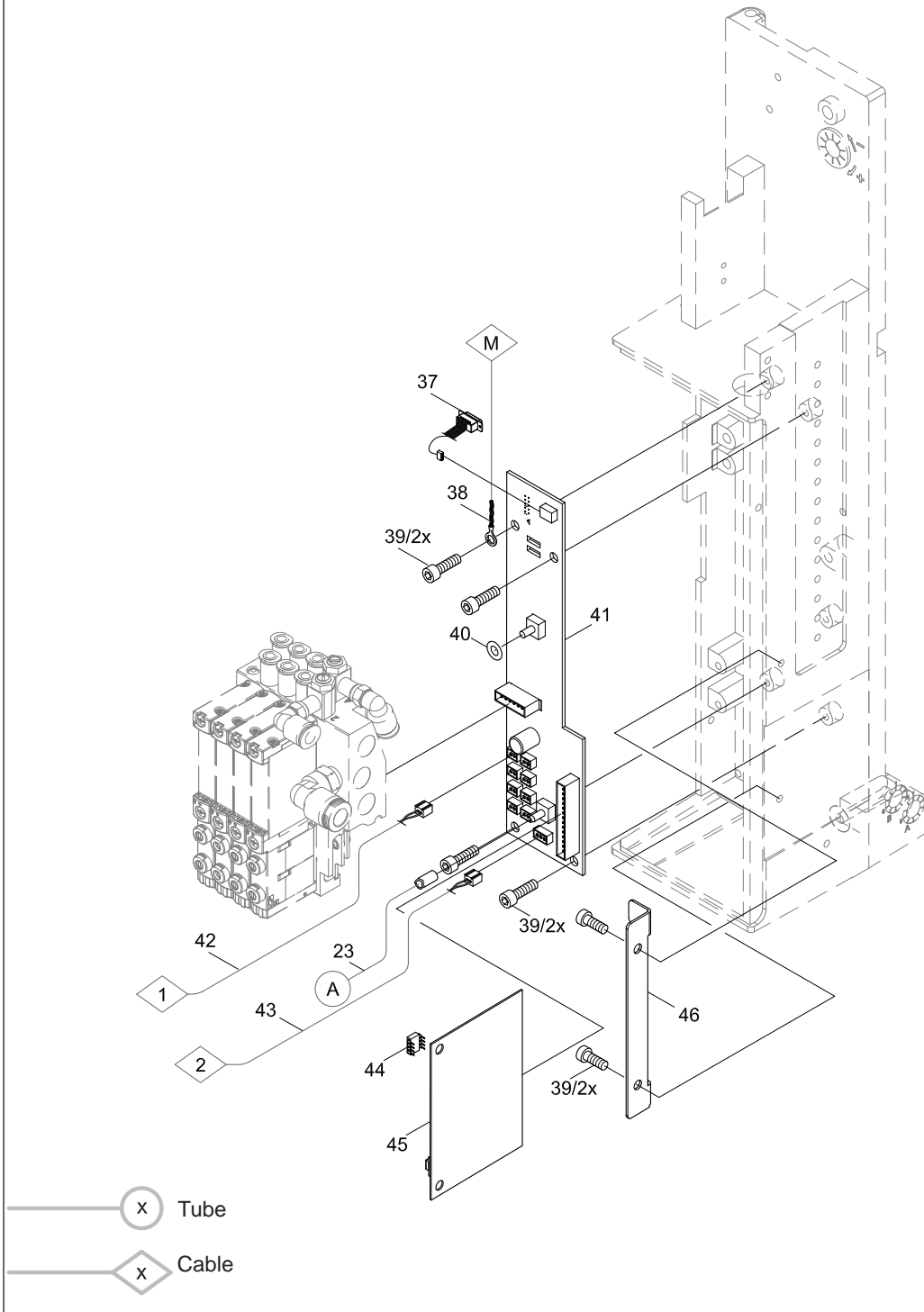
Note	L	Left
	R	Right
	C	200
	D	300
	E	400



No.	Part-No.	Description	PU	Note	Serial No.	
					from	to
23	5966463.001	Tube Ø4	2m			
37	5955586.001	Cable	1			
38.1	5964590.001	Cable	1	C		
38.2	5964591.001	Cable	1	D		
38.3	5964592.001	Cable	1	E		
39	5902571.001	Screw DIN7984-M4x6	10			
40	5906943.001	Sealing Ring	10			
41.1	5971416.001	PCB Applicator Interfaces	1	L		
41.2	5971417.001	PCB Applicator interfaces	1	R		

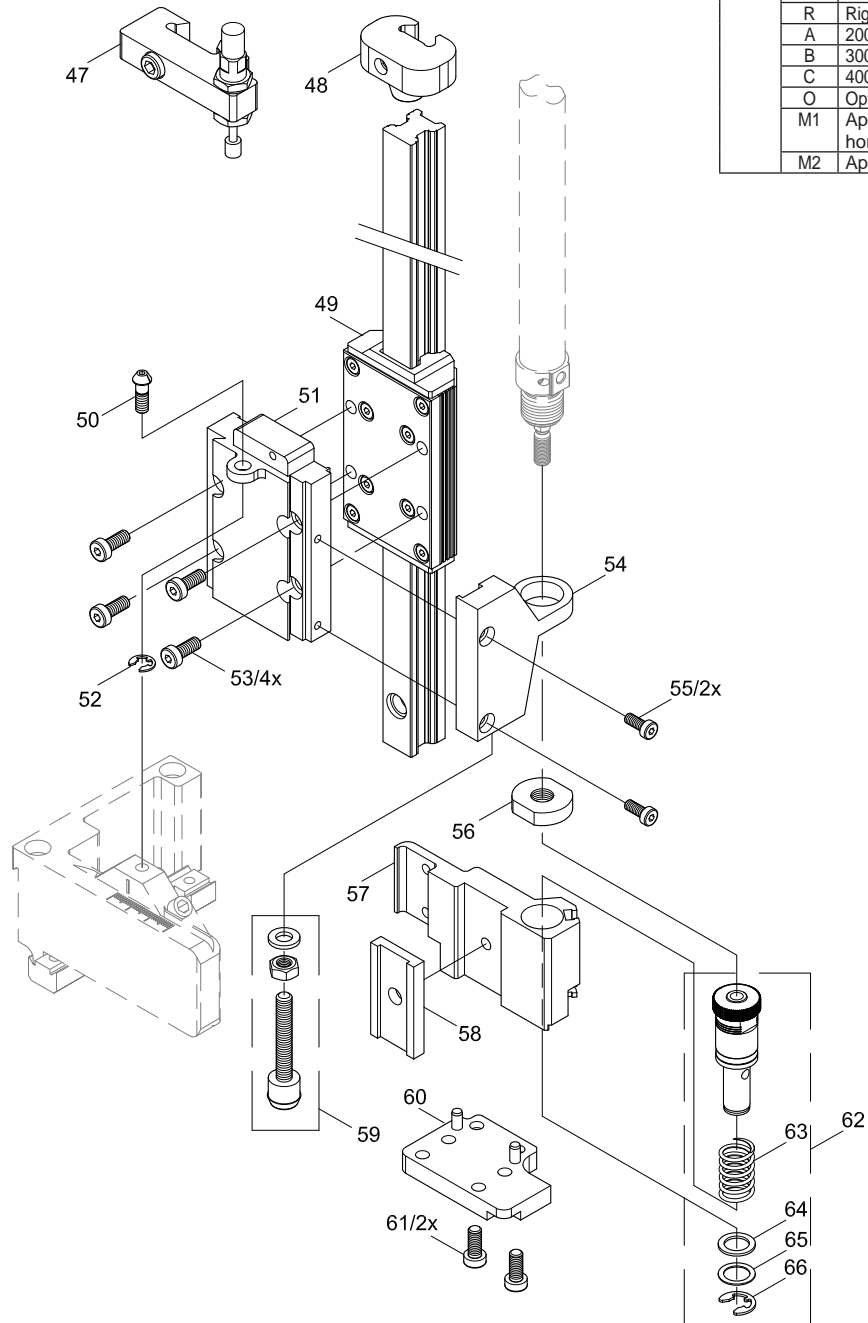
No.	Part-No.	Description	PU	Note	Serial No.	
					from	to
42.1	5964454.001	Sensor	1	C		
42.2	5964494.001	Sensor	1	D		
42.3	5964495.001	Sensor	1	E		
43.1	5971703.001	Cable Sensor	1	C		
43.2	5971588.001	Cable Sensor	1	D		
43.3	5971704.001	Cable Sensor	1	E		
44	5971589.001	EEPROM	1			
45	5955575.001	Applicator Control	1			
46	5966417.001	Retainer	1			
		Stopper				

Note	L	Left
	R	Rights
	C	200
	D	300
	E	400

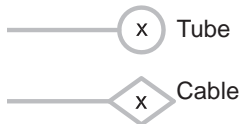


No.	Part-No.	Description	PU	Note	Serial No.	
					from	to
47.1	5979483.001	Stopper	1	C/D/O		
48.1	5979353.001	Guide Rail with Carriage	1	C/D		
49.1	5979331.001	Guide Rail with Carriage	1	C		
49.2	5979342.001	Set Screw	1	D		
50	5964061.001	Plate	1			
51.1	5979349.001	Plate	1	C/D/L		
51.2	5979417.001	E-Ring DIN6799-5	1	C/D/R		
52	5903505.001	Screw DIN7984-M5x25	10			
53	5902827.001	Holder	10			
54.1	5964301.001	Holder	1	L		
54.2	5964336.001	Screw DIN7984 M4x14	1	R		
55	5902562.001	Nut	10			
56	5521159.001	Tamp Retainer	1			

No.	Part-No.	Description	PU	Note	Serial No.	
					from	to
57.1	5964236.001	Tamp Retainer	1	L		
57.2	5964241.001	Adapter Rail	1	R		
58	5979327.001	Stopper	1	C/D		
59	5964351.001	Plate	1			
60.1	5979333.001	Plate	1	CD/L		
60.3	5979419.001	Screw DIN912-M5x10	1	C/D/R		
61	5902138.001	Adapter Bolt	10			
62	5964311.001	Spring	1			
63.1	5905069.001	Spring	1	M1		
63.2	5905049.001	Washer	1	M2		
64	5521157.001	Washer	1			
65	5521158.001	E-Ring DIN6799-7	1			
66	5903501.001	Sicherungsscheibe DIN6799-7	10			



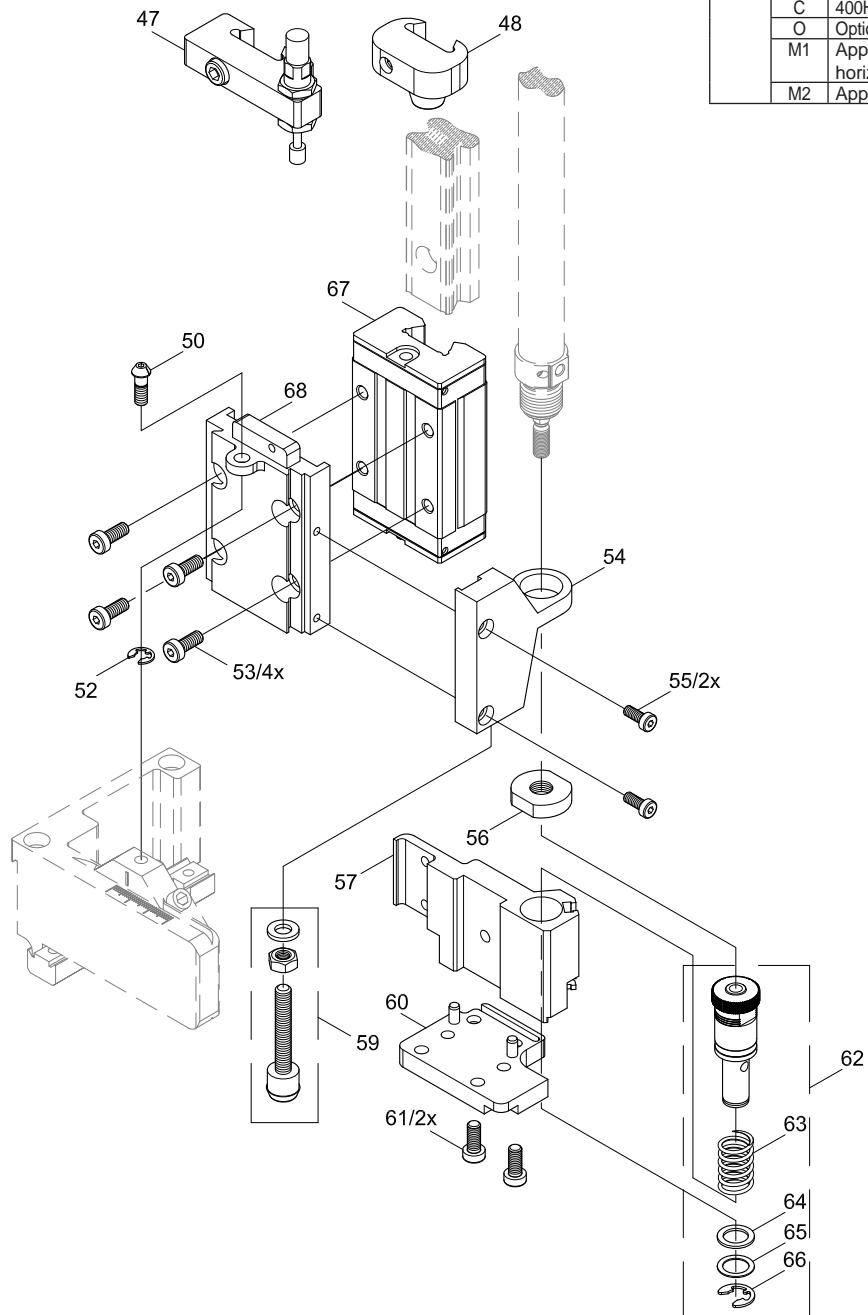
Note	L	Left
	R	Right
	A	200H
	B	300H
	C	400H
	O	Option
	M1	Appl. top down / horizontal
	M2	Appl. upward



No.	Part-No.	Description	PU	Note	Serial No.	
					from	to
47.2	5964343.001	Stopper	1	E/O		
48.2	5964364.001	Stopper	1	E		
50	5964061.001	Set Screw	1			
52	5903505.001	E-Ring DIN6799-5	10			
53	5902827.001	Screw DIN7984-M5x25	10			
54.1	5964301.001	Holder	1	L		
54.2	5964336.001	Holder	1	R		
55	5902562.001	Screw DIN7984 M4x14	10			
56	5521159.001	Nut	1			
57.1	5964236.001	Tamp Retainer	1	L		
57.2	5964241.001	Tamp Retainer	1	R		
59	5964351.001	Stopper	1			

No.	Part-No.	Description	PU	Note	Serial No.	
					from	to
60.2	5964240.001	Plate	1	E/L		
60.4	5964244.001	Plate	1	E/R		
61	5902138.001	Screw DIN912-M5x10	10			
62	5964311.001	Adapter Bolt	1			
63.1	5905069.001	Spring	1	M1		
63.2	5905049.001	Spring	1	M2		
64	5521157.001	Washer	1			
65	5521158.001	Washer	1			
66	5903501.001	E-Ring DIN6799-7	10			
67	5965966.001	Sliding Carriage	1			
68.1	5964302.001	Plate	1	E/L		
68.2	5964337.001	Plate	1	E/R		

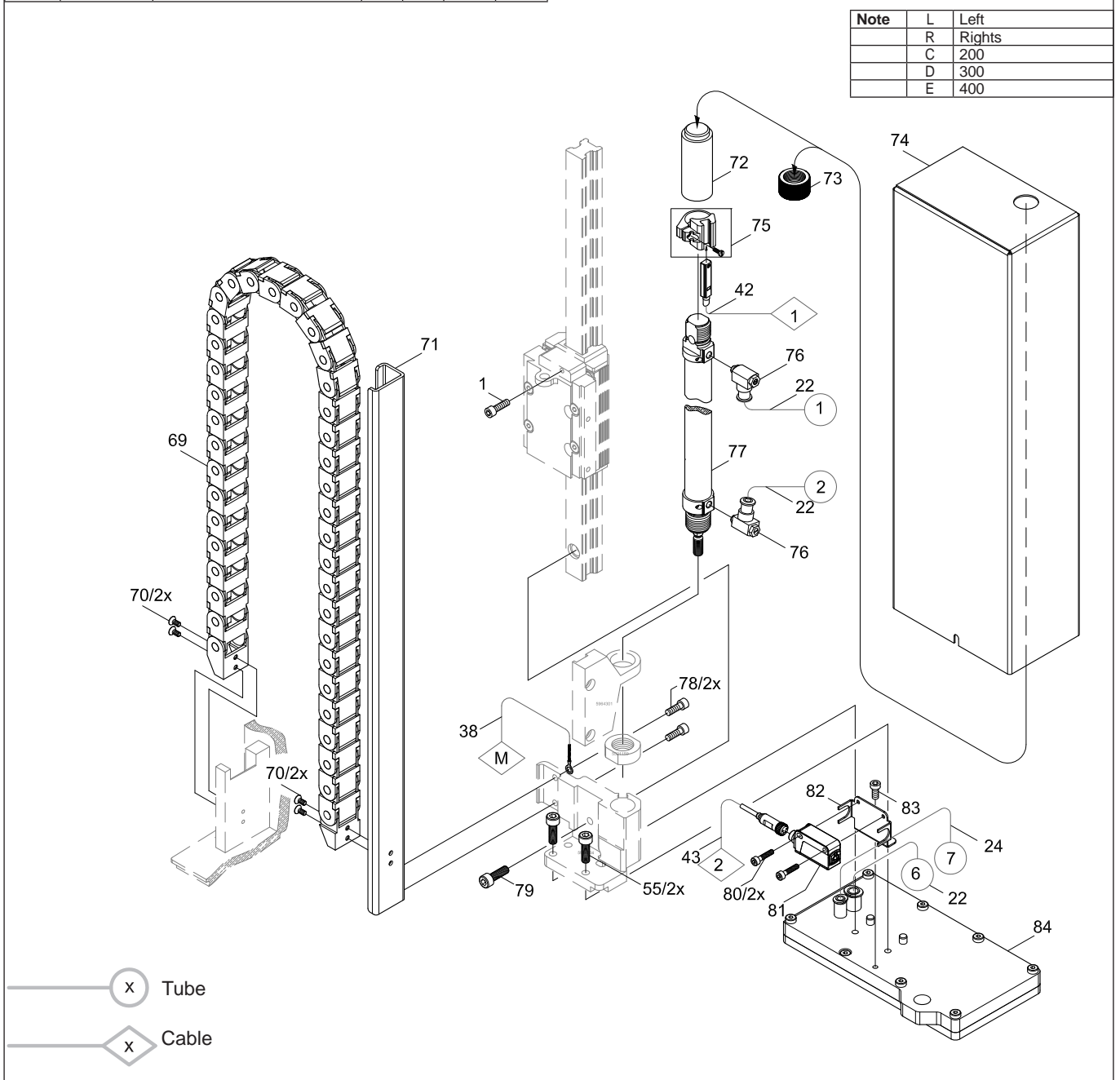
Note	L	Left
		R
	A	200H
	B	300H
	C	400H
	O	Option
	M1	Appl. top down / horizontal
	M2	Appl. upward



No.	Part-No.	Description	PU	Note	Serial No.	
					from	to
1	5902489.001	Screw DIN7984-M4x8	10			
22	5966460.001	Tube Ø4	2m			
24	5966464.001	Tube Ø6	2m			
25	5966465.001	Tube Ø8	2m			
38.1	5964590.001	Cable	1	C		
38.2	5964591.001	Cable	1	D		
42.1	5964454.001	Sensor	1	C		
42.2	5964494.001	Sensor	1	D		
43.1	5971703.001	Cable Sensor	1	C		
43.2	5971588.001	Cable Sensor	1	D		
55	5902562.001	Screw DIN7984 M4x14	10			
69.1	5964373.001	Energy Track	1	C		
69.2	5964374.001	Energy Track	1	D		
70	5902047.001	Screw DIN7991-M3x5	10			
71.1	5964347.001	Bracket	1	C/L		
71.2	5964396.001	Bracket	1	C/R		
71.3	5964357.001	Bracket	1	D/L		
71.4	5964398.001	Bracket	1	D/R		

No.	Part-No.	Description	PU	Note	Serial No.	
					from	to
72	5964443.001	Bolt	1			
73	5964489.001	Knurled Nut	1			
74	5905593.001	Mounting Clip	1			
74.1	5964440.001	Cover	1	C/L		
74.2	5964451.001	Cover	1	C/R		
74.3	5964483.001	Cover	1	D/L		
74.4	5964453.001	Cover	1	D/R		
76	5906636.001	One-way Flow Control Valve	1			
77.1	5906938.001	Cylinder	1	C		
77.2	5905973.001	Cylinder	1	D		
78	5902837.001	Screw DIN7984-M4x8	10			
79.1	5902895.001	Screw DIN7984-M 6x30	10	C/D		
80	5902003.001	Screw DIN912-M3x14	10			
81	5918982.001	Sensor	0			
82	5979008.001	Bracket	1			
83	5902358.001	Screw DIN7984-M4x6	10			
84		Pad , customized	1			

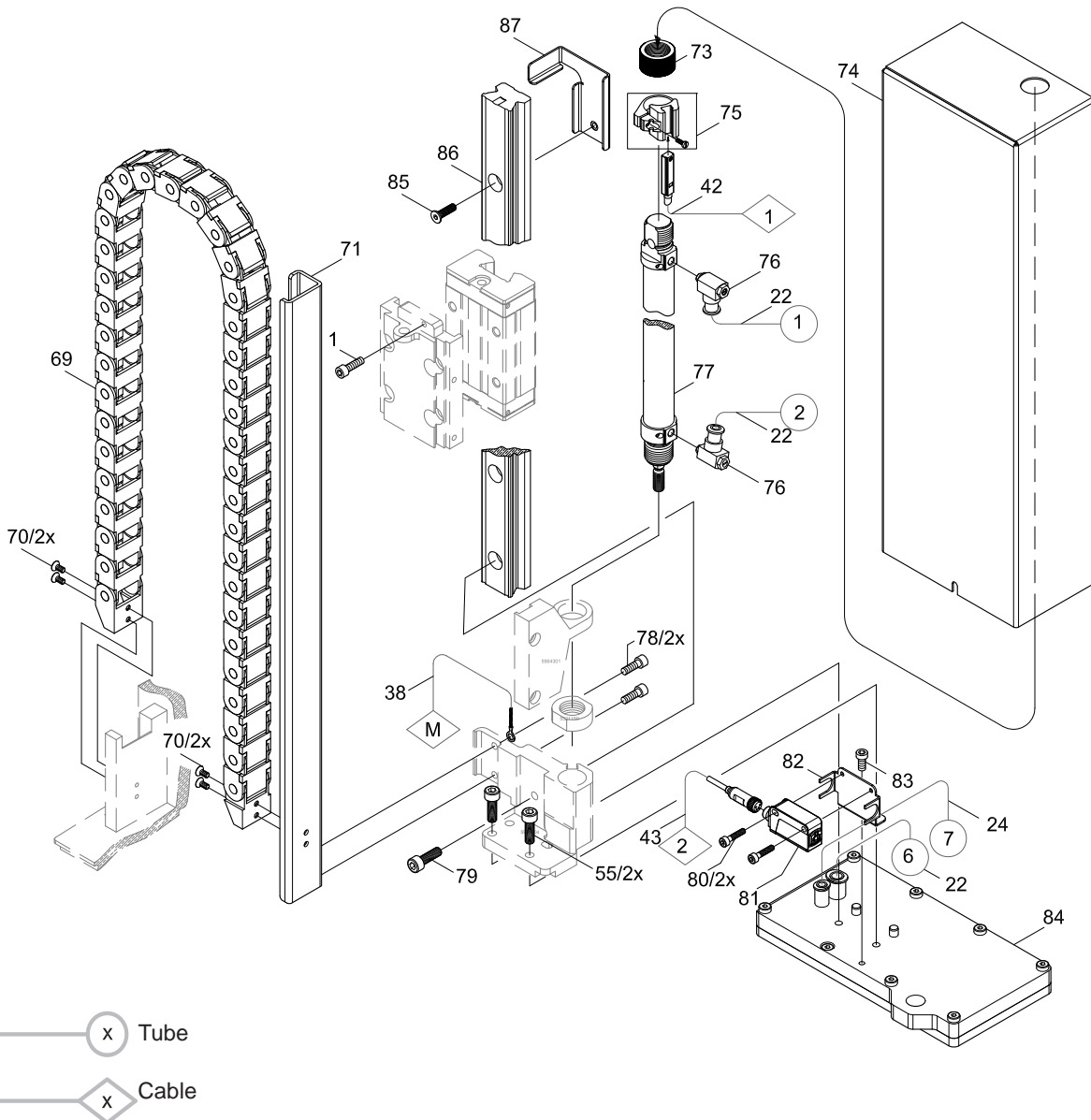
Note	L	Left
	R	Rights
	C	200
	D	300
	E	400



No.	Part-No.	Description	PU	Note	Serial No.	
					from	to
1	5902489.001	Screw DIN7984-M4x8	10			
22	5966460.001	Tube Ø4	2m			
24	5966464.001	Tube Ø6	2m			
38.3	5964592.001	Cable	1	E		
42.3	5964495.001	Sensor	1	E		
43.3	5971704.001	Cable Sensor	1	E		
55	5902562.001	Screw DIN7984 M4x14	10			
69.3	5964375.001	Energy Track	1	E		
70	5902047.001	Screw DIN7991-M3x5	10			
71.5	5964358.001	Bracket	1	E/L		
71.6	5964402.001	Bracket	1	E/R		
73	5964489.001	Knurled Nut	1			
74.5	5964484.001	Cover	1	E/L		
74.6	5964485.001	Cover	1	E/R		
75	5905593.001	Mounting Clip	1			

No.	Part-No.	Description	PU	Note	Serial No.	
					from	to
76	5906636.001	One-way Flow Control Valve	1			
77.3	5906117.001	Cylinder	1			
78	5902837.001	Screw DIN7984-M4x8	10			
79.2	5909043.001	Screw DIN7984-M6x20	10	E/L		
79.3	5902335.001	Screw DIN7984-M6x25	10	E/R		
80	5902003.001	Screw DIN912-M3x14	10			
81	5918982.001	Sensor	0			
82	5979008.001	Bracket	1			
83	5902358.001	Screw DIN7984-M4x6	10			
84		Pad , customized	1			
85	5902846.001	Screw DIN7991-M4x8	10			
86	5979307.001	Guide Rail	1			
87.1	5966524.001	Bracket	1	E/L		
87.2	5966528.001	Bracket	1	E/R		

Note	L	Left
	R	Rights
	C	200
	D	300
	E	400



Pos.	Figure/Page				No.	Part No.	Description	PU	SPR				Notes	Serial No.			
														from	to		
1			6	7	64	5521157.001	Washer	1	-	-	-	-					
2			6	7	65	5521158.001	Washer	1	-	-	-	-					
3			6	7	56	5521159.001	Nut	1	-	-	-	-					
4				8	9	80	5902003.001	Screw DIN912-M3x14	10	-	-	-	-				
5	3				11	5902021.001	Screw DIN7991-M3x6	10	-	-	-	-					
6				8	9	70	5902047.001	Screw DIN7991-M3x5	10	-	-	-	-				
7			6	7		61	5902138.001	Screw DIN912-M5x10	10	-	-	-	-				
8	3				14	5902167.001	Screw DIN912-M5x50	10	-	-	-	-					
9				9	79.3	5902335.001	Screw DIN7984-M6x25	10	-	-	-	-	E/R				
10				8	9	83	5902358.001	Screw DIN7984-M4x6	10	-	-	-	-				
11	3	4			8	9	1	5902489.001	Screw DIN7984-M4x8	10	-	-	-	-			
12			6	7	8	9	55	5902562.001	Screw DIN7984 M4x14	10	-	-	-	-			
13			5				39	5902571.001	Screw DIN7984-M4x6	10	-	-	-	-			
14			6	7			53	5902827.001	Screw DIN7984-M5x25	10	-	-	-	-			
15				8	9		78	5902837.001	Screw DIN7984-M4x8	10	-	-	-	-			
16					9		85	5902846.001	Screw DIN7991-M4x8	10	-	-	-	-			
17	4						18	5902863.001	Screw DIN7984-M4x25	10	-	-	-	-			
18				8			79.1	5902895.001	Screw DIN7984-M 6x30	10	-	-	-	-	C/D		
19			6	7			66	5903501.001	E-Ring DIN6799-7	10	-	-	-	-			
20			6	7			52	5903505.001	E-Ring DIN6799-5	10	-	-	-	-			
21	3						6	5903525.001	E-Ring DIN 6799-4	10	-	-	-	-			
22	3						4	5904544.001	Spring	10	-	-	C	D			
23			6	7			63.2	5905049.001	Spring	1	-	-	C	D	M2		
24			6	7			63.1	5905069.001	Spring	1	-	-	C	D	M1		
25	4						33	5905257.001	Silencer	1	A	B	C	D			
26	4						35	5905283.001	Push-in/threaded Fitting	1	-	-	-	-		15637	
27	4						20	5905284.001	Shut-off valve	1	-	-	-	-			
28	4						19	5905285.001	Push-in L-Connector	1	-	-	-	-			
29				8	9		74	5905593.001	Mounting Clip	1	-	-	-	-			
30	4						26	5905972.001	Push-in Y-Fitting	1	-	-	-	-			
31				8			77.2	5905973.001	Cylinder	1	-	-	C	D	D		
32	4						29	5906021.001	Magnetic Valve	1	0	0	0	0			
33	4						30	5906022.001	Magnetic Valve	1	0	0	0	0			
34				9			77.3	5906117.001	Cylinder	1	-	-	C	D			
35				8	9		76	5906636.001	One-way Flow Control Valve	1	A	B	C	D			
36	4						21	5906842.001	Push-in/threaded Fitting	1	-	-	-	-			
37	4						32	5906844.001	Vacuum Generator	1	-	-	-	-			
38	4						31	5906914.001	Push-in L-Connector	1	-	-	-	-			
39	4						34	5906915.001	Push-in T-Connector	1	-	-	-	-			
40				8			77.1	5906938.001	Cylinder	1	-	-	C	D	C		
41		5					40	5906943.001	Sealing Ring	10	-	-	-	-			
42				9			79.2	5909043.001	Screw DIN7984-M6x20	10	-	-	-	-	E/L		
43				8	9		81	5918982.001	Sensor	1	-	-	-	-			
44		5					45	5955575.001	Applicator Control	1	-	-	C	D			
45		5					37	5955586.001	Cable	1	-	-	C	D			
46	3						12.1	5964036.001	Mounting Plate	1	-	-	-	-	L		
47			6	7			50	5964061.001	Set Screw	1	-	-	-	-			
48	3						17	5964062.001	Binder	1	-	-	-	-			
49	3						9	5964090.001	Interlock	1	-	-	-	-			
50		4					36.2	5964095.001	Blow Tube 4"	1	-	-	-	-			
51	3						2	5964129.001	Cover	1	-	-	-	-			
52	3						12.2	5964185.001	Mounting Plate	1	-	-	-	-	R		
53			6	7			57.1	5964236.001	Tamp Retainer	1	-	-	-	-	L		
54				7			60.2	5964240.001	Plate	1	-	-	-	-	E/L		
55			6	7			57.2	5964241.001	Tamp Retainer	1	-	-	-	-	R		
56				7			60.4	5964244.001	Plate	1	-	-	-	-	E/R		

PU Package unit

Note

L Left
R Right
A 200
B 300
C 400F Pressure reduced
M1 Appl. top down / horizontal
M2 Appl. upward
O Option

SPR Recommendation

A - wearing parts and accessories
B - recommended spare parts for quick repair
C - recommended spare parts for distributors
D - recommended spare parts for central stores

Pos.	Figure/Page					No.	Part No.	Description	PU	SPR				Notes	Serial No.	
										from	to					
57		4				36.1	5964277.001	Blow Tube 2"	1	-	-	-	-			
58				6	7	54.1	5964301.001	Holder	1	-	-	-	-	L		
59					7	68.1	5964302.001	Plate	1	-	-	-	-	E/L		
60	3					16.1	5964310.001	Clamping Element	1	-	-	-	-	L		
61				6	7	62	5964311.001	Adapter Bolt	1	-	-	-	-			
62	3					15.1	5964312.001	Crossbeam	1	-	-	-	-	L		
63	3					13.1	5964318.001	Adapter Profile	1	-	-	-	-	C/D		
64	3					16.2	5964328.001	Clamping Element	1	-	-	-	-	R		
65	3					15.2	5964331.001	Crossbeam	1	-	-	-	-	R		
66				6	7	54.2	5964336.001	Holder	1	-	-	-	-	R		
67					7	68.2	5964337.001	Plate	1	-	-	-	-	E/R		
68					7	47.2	5964343.001	Stopper	1	-	-	-	-	E/O		
69					8	71.1	5964347.001	Bracket	1	-	-	-	-	C/L		
70				6	7	59	5964351.001	Stopper	1	-	-	-	-			
71					8	71.3	5964357.001	Bracket	1	-	-	-	-	D/L		
72					9	71.5	5964358.001	Bracket	1	-	-	-	-	E/L		
73					7	48.2	5964364.001	Stopper	1	-	-	-	-	E		
74	3					5	5964367.001	Knurled Screw	1	-	-	-	-			
75					8	69.1	5964373.001	Energy Track	1	-	-	-	-	C		
76					8	69.2	5964374.001	Energy Track	1	-	-	-	-	D		
77					9	69.3	5964375.001	Energy Track	1	-	-	-	-	E		
78					8	71.2	5964396.001	Bracket	1	-	-	-	-	C/R		
79					8	71.4	5964398.001	Bracket	1	-	-	-	-	D/R		
80					9	71.6	5964402.001	Bracket	1	-	-	-	-	E/R		
81	3					10.1	5964429.001	Plate	1	-	-	-	-	L		
82	3					10.2	5964438.001	Plate	1	-	-	-	-	R		
83					8	74.1	5964440.001	Cover	1	-	-	-	-	C/L		
84					8	72	5964443.001	Bolt	1	-	-	-	-			
85					8	74.2	5964451.001	Cover	1	-	-	-	-	C/R		
86					8	74.4	5964453.001	Cover	1	-	-	-	-	D/R		
87		5			8	42.1	5964454.001	Sensor	1	-	-	-	-	C		
88					8	74.3	5964483.001	Cover	1	-	-	-	-	D/L		
89					9	74.5	5964484.001	Cover	1	-	-	-	-	E/L		
90					9	74.6	5964485.001	Cover	1	-	-	-	-	E/R		
91					8	9	73	5964489.001	Knurled Nut	1	-	-	-	-		
92		5			8	42.2	5964494.001	Sensor	1	-	-	C	D	D		
93		5			9	42.3	5964495.001	Sensor	1	-	-	C	D	E		
94		5			8	38.1	5964590.001	Cable	1	-	-	C	D	C		
95		5			8	38.2	5964591.001	Cable	1	-	-	C	D	D		
96		5			9	38.3	5964592.001	Cable	1	-	-	C	D	E		
97	3					3	5965963.001	Set Screw	1	-	-	-	-			
98					7	67	5965966.001	Sliding Carriage	1	-	-	-	-			
99		4				27	5966414.001	Pressure Regulator	1	-	-	-	-	O		
100		5				46	5966417.001	Retainer	1	-	-	-	-			
101		4			8	9	22	5966460.001	Tube Ø4	2m	-	B	C	D		
102		4	5			23	5966463.001	Tube Ø4	2m	-	B	C	D			
103		4			8	9	24	5966464.001	Tube Ø6	2m	-	B	C	D		
104		4			8	25	5966465.001	Tube Ø8	2m	-	B	C	D			
105					9	87.1	5966524.001	Bracket	1	-	-	-	-	E/L		
106					9	87.2	5966528.001	Bracket	1	-	-	-	-	E/R		
107	3					8.1	5966529.001	Hinges	1	-	-	-	-			
108	3					7	5966530.001	Eccentric	1	-	-	-	-			
109	3					8.2	5966531.001	Hinges	1	-	-	-	-			
110	3					13.2	5970013.001	Adapter Profile	1	-	-	-	-	E/L		
111	3					13.3	5970014.001	Adapter Profile	1	-	-	-	-	E/R		
112		5				41.1	5971416.001	PCB Applicator Interfaces	1	-	B	C	D	L		

PU Package unit
 SPR Recommendation
 A - wearing parts and accessories
 B - recommended spare parts for quick repair
 C - recommended spare parts for distributors
 D - recommended spare parts for central stores
 Note
 L Left
 R Right
 A 200
 B 300
 C 400
 F Pressure reduced
 M1 Appl. top down / horizontal
 M2 Appl. upward
 O Option

Pos.	Figure/Page					No.	Part No.	Description	PU	SPR					Notes	Serial No.	
113			5			41.2	5971417.001	PCB Applicator interfaces	1	-	B	C	D	R			
114			5		8	43.2	5971588.001	Cable Sensor	1	-	-	-	-	D			
115			5			44	5971589.001	EEPROM	1	-	-	-	-				
116			5		8	43.1	5971703.001	Cable Sensor	1	-	-	-	-	C			
117			5		9	43.3	5971704.001	Cable Sensor	1	-	-	-	-	E			
118	4					28.1	5976156.001	Valve Block	1	-	-	-	-	L			
119	4					28.2	5976157.001	Valve Block	1	-	-	-	-	R			
120					8 9	82	5979008.001	Bracket	1	-	-	-	-				
121					9	86	5979307.001	Guide Rail	1	-	-	-	-				
122			6			58	5979327.001	Adapter Rail	1	-	-	-	-	C/D			
123			6			49.1	5979331.001	Guide Rail with Carriage	1	-	-	-	-	C			
124			6			60.1	5979333.001	Plate	1	-	-	-	-	CD/L			
125			6			49.2	5979342.001	Guide Rail with Carriage	1	-	-	-	-	D			
126			6			51.1	5979349.001	Plate	1	-	-	-	-	C/D/L			
127			6			48.1	5979353.001	Stopper	1	-	-	-	-	C/D			
128			6			51.2	5979417.001	Plate	1	-	-	-	-	C/D/R			
129			6			60.3	5979419.001	Plate	1	-	-	-	-	C/D/R			
130			6			47.1	5979483.001	Stopper	1	-	-	-	-	C/D/O			

9 Packaging / Accessories

Pos.	Figure/Page					No.	Part No.	Description	PU	SPR					Notes	Serial No.	
131							9109134.001	Packaging	1	-	-	-	-				

PU Package unit

Note

L Left
R Right
A 200
B 300
C 400

F Pressure reduced
M1 Appl. top down / horizontal
M2 Appl. upward
O Option

SPR Recommendation

A - wearing parts and accessories
B - recommended spare parts for quick repair
C - recommended spare parts for distributors
D - recommended spare parts for central stores