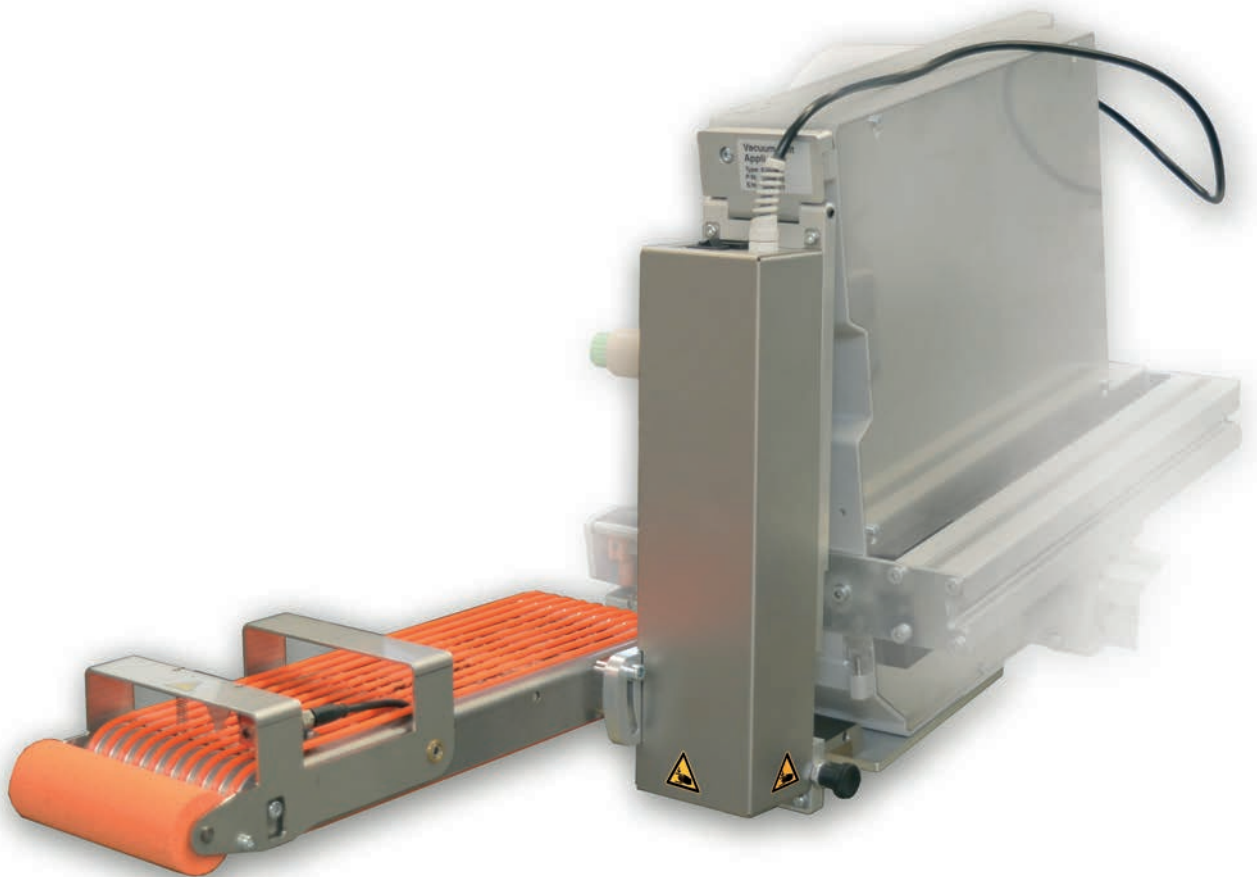


## Spare Parts List



Vacuum-Belt Applicator

**5314 / 5316**

## 2 Spare parts list for the following products

2

Family	Type
Vacuum-Belt Applicator	5314 L-3
	5314 R-3
	5316 L-3
	5316 R-3

### Table of Contents

1	Support Assembly/Transport.....	3
2	Control Unit / Contact Pressure .....	4
3	Fan- 5314 .....	5
4	Fan - 5316 .....	6
5	Spare Parts Register .....	7

**Edition:** 09/2022 - Part.-No.: 9003838

### Copyright

This documentation as well as translation hereof are property of cab Produkttechnik GmbH & Co. KG.

The replication, conversion, duplication or divulgement of the whole manual or parts of it for other intentions than its original intended purpose demand the previous written authorization by cab.

### Editor

Regarding questions or comments please contact cab Produkttechnik GmbH & Co. KG.

### Topicality

Due to the constant further development of our products discrepancies between documentation and product can occur.

Please check [www.cab.de](http://www.cab.de) for the latest update.

### Terms and conditions

Deliveries and performances are effected under the General conditions of sale of cab.

Germany  
**cab Produkttechnik GmbH & Co KG**  
Karlsruhe  
Phone +49 721 6626 0  
[www.cab.de](http://www.cab.de)

USA  
**cab Technology, Inc.**  
Chelmsford, MA  
Phone +1 978 250 8321  
[www.cab.de/us](http://www.cab.de/us)

Taiwan  
**cab Technology Co., Ltd.**  
Taipei  
Phone +886 (02) 8227 3966  
[www.cab.de/tw](http://www.cab.de/tw)

Singapore  
**cab Singapore Pte. Ltd.**  
Singapore  
Phone +65 6931 9099  
[www.cab.de/en](http://www.cab.de/en)

France  
**cab Technologies S.à.r.l.**  
Niedermodern  
Phone +33 388 722501  
[www.cab.de/fr](http://www.cab.de/fr)

Mexico  
**cab Technology, Inc.**  
Juárez  
Phone +52 656 682 4301  
[www.cab.de/es](http://www.cab.de/es)

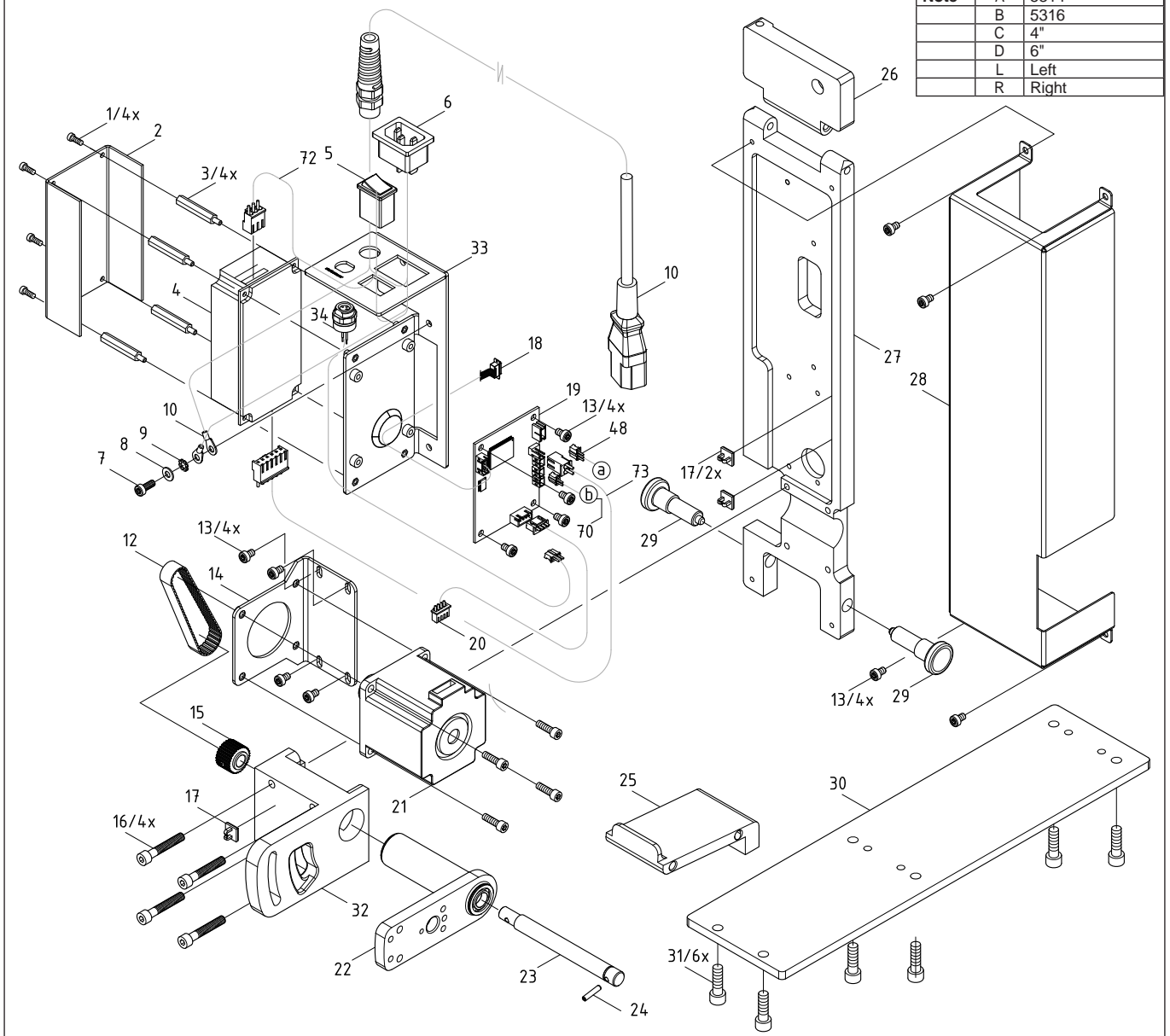
China  
**cab (Shanghai) Trading Co., Ltd.**  
Shanghai  
Phone +86 (021) 6236 3161  
[www.cab.de/cn](http://www.cab.de/cn)

South Africa  
**cab Technology (Pty) Ltd.**  
Randburg  
Phone +27 11 886 3580  
[www.cab.de/za](http://www.cab.de/za)

No	Part No.	Description	PU	Note	Serial No.	
					from	to
1	5902838.001	Screw DIN7984 M3x6	10			
2	5948154.001	Cover	1			
3	5900041.001	Distance Bolt M3x30	10			
4	5919058.001	Power Supply	1			
5	5905349.001	Switch	1			
6	5918052.001	Power Plug	1			
7	5902565.001	Screw DIN7984-M4x10	10			
8	5903033.001	Washer DIN125-A4.3	10			
9	5903011.001	Toothed Washer DIN6797-A4.3	10			
10	5555001.001	Cable	1			
11	5534732.001	Cable Grounding	1			
12	5905605.001	Belt 91MXL 037	1			
13	5902358.001	Screw DIN7984-M4x6	10			
14	5972738.001	Bracket	1			
15	5972456.001	Gear 29	1			
16	5902186.001	Screw DIN912-M5x30	10			
17	5901575.001	Cable Clamp	10			
18	5555004.001	Cable USB	1			
19	5551244.001	PCB Applicator Control	1			
20	5952587.001	Cable Motor	1			
21	5946206.001	Stepper Motor	1			
22	5972460.001	Adapter	1			

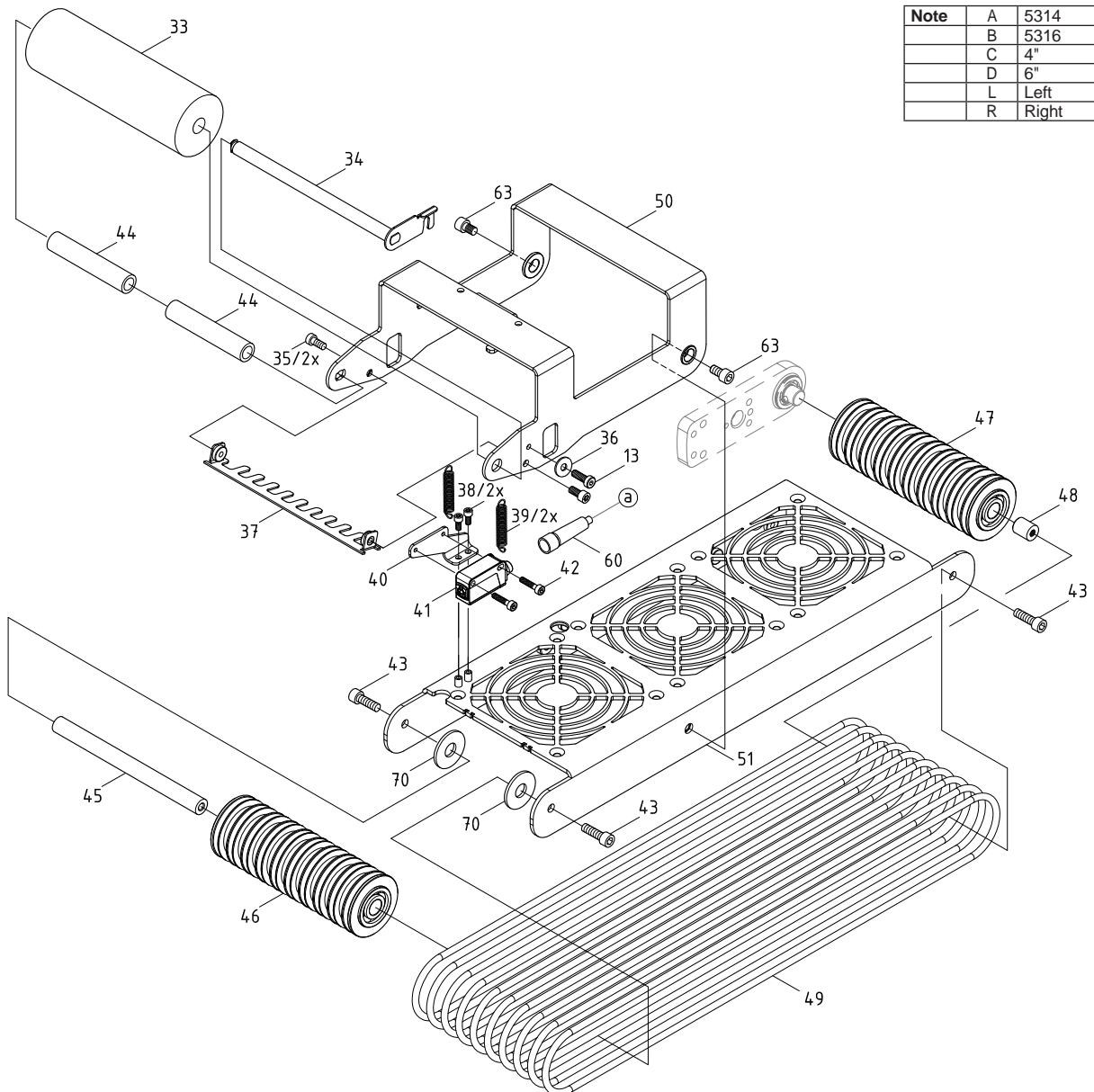
No	Part No.	Description	PU	Note	Serial No.	
					from	to
23	5972595.001	Motor Shaft	1			
24	5904031.001	Pin DIN1481-3x14	10			
25	5972747.001	Ratchet	1			
26.1	5972766.001	Hinge	1	L		
26.2	5972734.001	Hinge	1	R		
27.1	5972643.001	Support	1	L		
27.2	5972743.001	Support	1	R		
28.1	5972699.001	Cover	1	L		
28.2	5972737.001	Cover	1	R		
29	5906778.001	Locking Pin	1			
30	5972913.001	Plate	1			
31	5902124.001	Screw DIN912-M6x16	10			
32.1	5972768.001	Support Bracket	1	L		
32.2	5972741.001	Support Bracket	1	R		
60	5971518.001	Cable Sensor	1			
61.1	5972769.001	Mounting Plate	1	L		
61.2	5972744.001	Mounting Plate	1	R		
62	5970246.001	Sensor Adapter	1			
71	5952696.001	Cable	1			
72	5555186.001	Cable	1			
73	5555185.001	Cable	1			

Note	A	5314
	B	5316
	C	4"
	D	6"
	L	Left
	R	Right



No	Part No.	Description	PU	Note	Serial No.	
					from	to
33.1	5972772.001	Foam Roller	1	C		
33.2	5972415.001	Foam Roller	1	D		
34.1	5972761.001	Axle	1	C/L		
34.2	5972779.001	Axle	1	C/R		
34.3	5972453.001	Axle	1	D/L		
34.4	5972724.001	Axle	1	D/R		
35	5902571.001	Screw DIN7984-M4x6	10			
36	5903003.001	Washer DIN125-A4.3	10			
37.1	5972763.001	Fender	1	C		
37.2	5972617.001	Fender	1	D		
38	5902896.001	Screw DIN7984-M3x5	10			
39	5905083.001	Spring	1			
40	5972733.001	Holder	1			
41	5918982.001	Sensor	1			
42	5902003.001	Screw DIN912-M3x14	10			
43	5902138.001	Screw DIN912-M5x10	10			
44	5972187.001	Bushing	1			
45.1	5971483.001	Axle	1	C		
45.2	5972399.001	Axle	1	D		

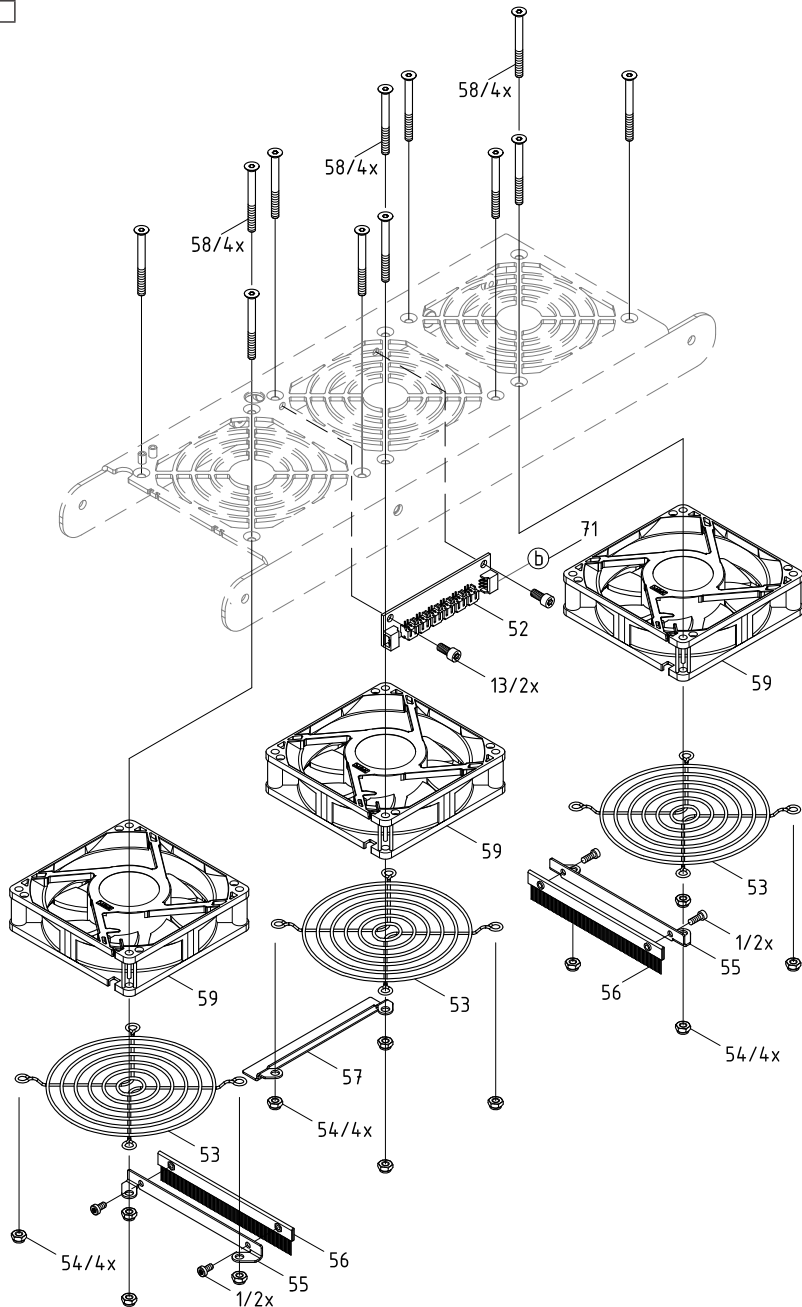
No	Part No.	Description	PU	Note	Serial No.	
					from	to
46.1	5972757.001	Profile Axle	1	C		
46.2	5972406.001	Profile Axle	1	D		
47.1	5972754.001	Profile Axle	1	C		
47.2	5972401.001	Profile Axle	1	D		
48	5972589.001	Bearing Journal	1			
49	5906309.001	Round Belt 4.0x776	1			
50.1	5972758.001	Lever	1	C/L		
50.2	5972777.001	Lever	1	C/R		
50.3	5972794.001	Lever	1	D/L		
50.4	5972727.001	Lever	1	D/R		
51.1	5972752.001	Baseplate	1	C/L		
51.2	5972781.001	Baseplate	1	C/R		
51.3	5972792.001	Baseplate	1	D/L		
51.4	5972722.001	Baseplate	1	D/R		
60	5971518.001	Cable Sensor	1			
63	5972732.001	Pivot Pin	1			
70.1	5979613.001	Washer	1	A		
70.2	5979612.001	Washer	1	B		



Note	A	5314
	B	5316
	C	4"
	D	6"
	L	Left
	R	Right

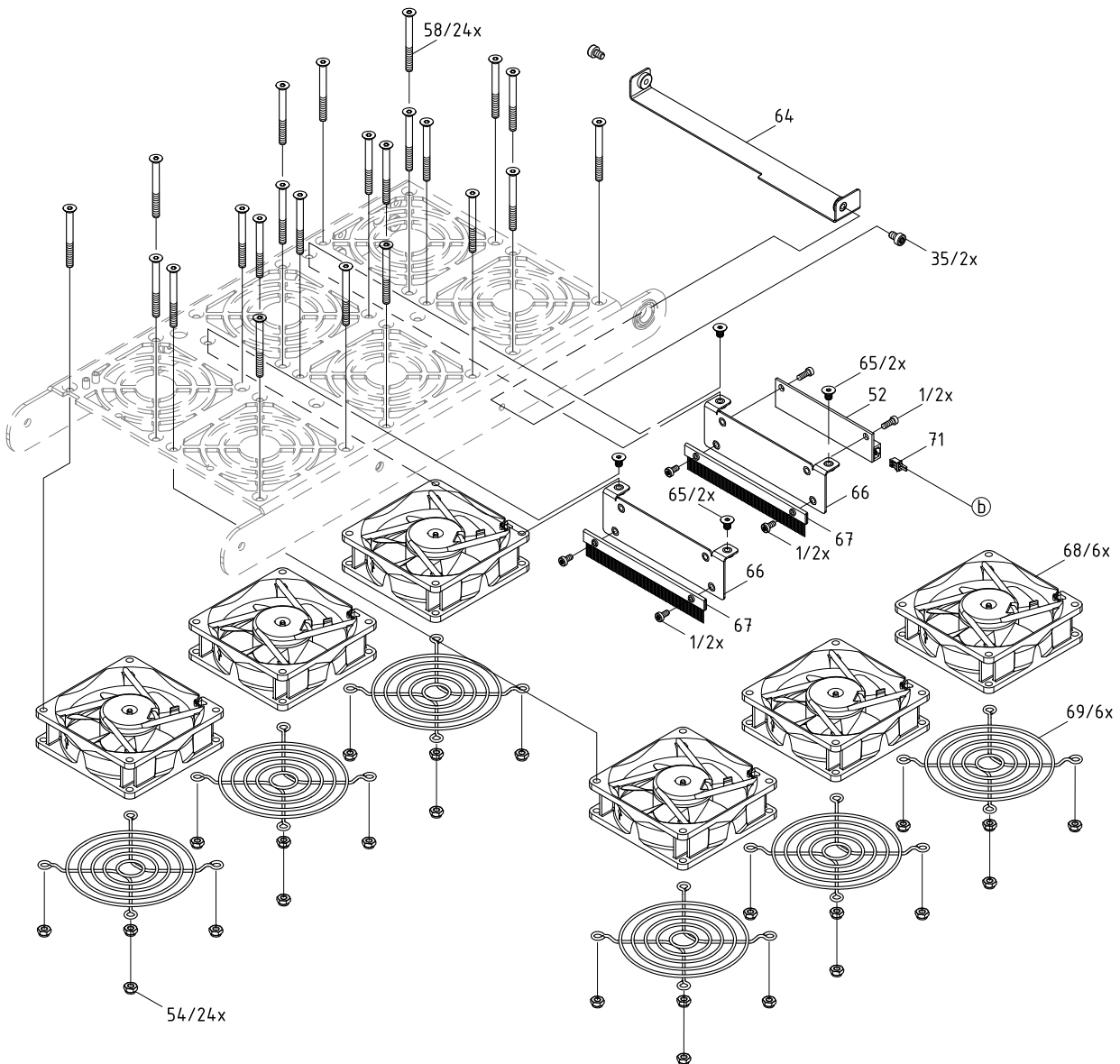
No	Part No.	Description	PU	Note	Serial No.	
					from	to
1	5902838.001	Screw DIN7984 M3x6	10			
13	5902358.001	Screw DIN7984-M4x6	10			
52	5551232.001	Distribution PCB Fan	1			
53	5907423.001	Fan Protection Grid 92x92mm	1	A		
54	5902570.001	Nut DIN982-M4	10			
55	5972749.001	Brush Holder	1	A		
56	5961639.001	Antistatic Brush	1	A		
57	5972751.001	Cover	1	A		
58	5902015.001	Screw DIN7991-M4x35	10			
59	5971790.001	Fan	1	A		
71	5952696.001	Cable	1			

Note	A	5314
	B	5316
	C	4"
	D	6"
	L	Left
	R	Right



No	Part No.	Description	PU	Note	Serial No.	
					from	to
1	5902838.001	Screw DIN7984 M3x6	10			
35	5902571.001	Screw DIN7984-M4x6	10			
52	5551232.001	Distribution PCB Fan	1			
54	5902570.001	Nut DIN982-M4	10			
58	5902015.001	Screw DIN7991-M4x35	10			
64	5972619.001	Cover	1	B		
65	5902304.001	Screw DIN7991-M4x6	10			
66	5972899.001	Mounting Plate	1	B		
67	5961638.001	Antistatic Brush	1	B		
68	5972173.001	Fan	1	B		
69	5906299.001	Fan Protection Grid 80x80mm	1	B		
71	5952696.001	Cable	1			

Note	A	5314
	B	5316
	C	4"
	D	6"
	L	Left
	R	Right



# 5 Spare Parts Register

Pos.	Figure/Page				No.	Part No.	Description	PU	SPR					Notes	Serial No.	
1	3				11	5534732.001	Cable Grounding	1	-	-	-	-				
2		5	6		52	5551232.001	Distribution PCB Fan	1	-	-	C	D				
3	3				19	5551244.001	PCB Applicator Control	1	-	-	C	D				
4	3				10	5555001.001	Cable	1	-	-	-	-				
5	3				18	5555004.001	Cable USB	1	-	-	-	-				
6	3				73	5555185.001	Cable USB	1	-	-	-	-				
7	3				72	5555186.001	Cable USB	1	-	-	-	-				
8	3				3	5900041.001	Distance Bolt M3x30	10	-	-	-	-				
9	3				17	5901575.001	Cable Clamp	10	-	-	-	-				
10		4			42	5902003.001	Screw DIN912-M3x14	10	-	-	-	-				
11			5	6	58	5902015.001	Screw DIN7991-M4x35	10	-	-	-	-				
12	3				31	5902124.001	Screw DIN912-M6x16	10	-	-	-	-				
13		4			43	5902138.001	Screw DIN912-M5x10	10	-	-	-	-				
14	3				16	5902186.001	Screw DIN912-M5x30	10	-	-	-	-				
15				6	65	5902304.001	Screw DIN7991-M4x6	10	-	-	-	-				
16	3		5		13	5902358.001	Screw DIN7984-M4x6	10	-	-	-	-				
17	3				7	5902565.001	Screw DIN7984-M4x10	10	-	-	-	-				
18			5	6	54	5902570.001	Nut DIN982-M4	10	-	-	-	-				
19		4		6	35	5902571.001	Screw DIN7984-M4x6	10	-	-	-	-				
20	3		5	6	1	5902838.001	Screw DIN7984 M3x6	10	-	-	-	-				
21		4			38	5902896.001	Screw DIN7984-M3x5	10	-	-	-	-				
22		4			36	5903003.001	Washer DIN125-A4.3	10	-	-	-	-				
23	3				9	5903011.001	Toothed Washer DIN6797-A4.3	10	-	-	-	-				
24	3				8	5903033.001	Washer DIN125-A4.3	10	-	-	-	-				
25	3				24	5904031.001	Pin DIN1481-3x14	10	-	-	-	-				
26		4			39	5905083.001	Spring	1	-	-	C	D				
27	3				5	5905349.001	Switch	1	-	-	-	-				
28	3				12	5905605.001	Belt 91MXL 037	1	-	-	-	-				
29				6	69	5906299.001	Fan Protection Grid 80x80mm	1	-	-	-	-	B			
30		4			49	5906309.001	Round Belt 4.0x776	1	-	-	-	-				
31	3				29	5906778.001	Locking Pin	1	-	-	-	-				
32			5		53	5907423.001	Fan Protection Grid 92x92mm	1	-	-	-	-	A			
33	3				6	5918052.001	Power Plug	1	-	-	-	-				
34		4			41	5918982.001	Sensor	1	-	-	-	-				
35	3				4	5919058.001	Power Supply	1	-	-	-	-				
36	3				21	5946206.001	Stepper Motor	1	-	-	C	D				
37	3				2	5948154.001	Cover	1	-	-	-	-				
38	3				20	5952587.001	Cable Motor	1	-	-	-	D				
39				6	67	5961638.001	Antistatic Brush	1	-	-	-	-	B			
40			5		56	5961639.001	Antistatic Brush	1	-	-	-	-	A			
41	3				62	5970246.001	Sensor Adapter	1	-	-	C	D				
42		4			45.1	5971483.001	Axle	1	-	-	-	-	C			
43		4			60	5971518.001	Cable Sensor	1	-	-	-	-				
44			5		59	5971790.001	Fan	1	-	-	-	-	A			
45				6	68	5972173.001	Fan	1	-	B	C	D	B			
46		4			44	5972187.001	Bushing	1	-	-	-	-				
47		4			45.2	5972399.001	Axle	1	-	-	-	-	D			
48		4			47.2	5972401.001	Profile Axle	1	-	-	-	-	D			
49		4			46.2	5972406.001	Profile Axle	1	0	0	0	0	D			
50		4			33.2	5972415.001	Foam Roller	1	A	B	C	D	D			
51		4			34.3	5972453.001	Axle	1	-	-	-	-	D/L			
52	3				15	5972456.001	Gear 29	1	-	-	-	-				
53	3				22	5972460.001	Adapter	1	-	-	-	-				
54		4			48	5972589.001	Bearing Journal	1	-	-	-	-				
55	3				23	5972595.001	Motor Shaft	1	-	-	-	-				
56		4			37.2	5972617.001	Fender	1	-	-	-	-	D			
57				6	64	5972619.001	Cover	1	-	-	-	-	B			
58	3				27.1	5972643.001	Support	1	-	-	-	-	L			
59	3				28.1	5972699.001	Cover	1	-	-	-	-	L			
60		4			51.4	5972722.001	Baseplate	1	-	-	-	-	D/R			
61		4			34.4	5972724.001	Axle	1	-	-	-	-	D/R			
62		4			50.4	5972727.001	Lever	1	-	-	-	-	D/R			
63		4			63	5972732.001	Pivot Pin	1	-	-	-	-				
64		4			40	5972733.001	Holder	1	-	-	-	-				

PU Package unit  
 SPR Spare part recommendation  
 A - wearing parts and accessories  
 B - recommended spare parts for quick repair  
 C - recommended spare parts for distributors  
 D - recommended spare parts for central stores  
 Note A 5314  
 B 5316  
 C 4"  
 D 6"  
 L Left  
 R Right



Pos.	Figure/Page			No.	Part No.	Description	PU	SPR				Notes	Serial No.	
													from	to
65	3			26.2	5972734.001	Hinge	1	-	-	-	-	R		
66	3			28.2	5972737.001	Cover	1	-	-	-	-	R		
67	3			14	5972738.001	Bracket	1	-	-	-	-			
68	3			32.2	5972741.001	Support Bracket	1	-	-	-	-	R		
69	3			27.2	5972743.001	Support	1	-	-	-	-	R		
70	3			61.2	5972744.001	Mounting Plate	1	-	-	-	-	R		
71	3			25	5972747.001	Ratchet	1	-	-	-	-			
72			5	55	5972749.001	Brush Holder	1	-	-	-	-	A		
73			5	57	5972751.001	Cover	1	-	-	-	-	A		
74		4		51.1	5972752.001	Baseplate	1	-	-	-	-	C/L		
75		4		47.1	5972754.001	Profile Axle	1	-	-	-	-	C		
76		4		46.1	5972757.001	Profile Axle	1	-	-	-	-	C		
77		4		50.1	5972758.001	Lever	1	-	-	-	-	C/L		
78		4		34.1	5972761.001	Axle	1	-	-	-	-	C/L		
79		4		37.1	5972763.001	Fender	1	-	-	-	-	C		
80	3			26.1	5972766.001	Hinge	1	-	-	-	-	L		
81	3			32.1	5972768.001	Support Bracket	1	-	-	-	-	L		
82	3			61.1	5972769.001	Mounting Plate	1	-	-	-	-	L		
83		4		33.1	5972772.001	Foam Roller	1	-	-	-	-	C		
84		4		50.2	5972777.001	Lever	1	-	-	-	-	C/R		
85		4		34.2	5972779.001	Axle	1	-	-	-	-	C/R		
86		4		51.2	5972781.001	Baseplate	1	-	-	-	-	C/R		
87		4		51.3	5972792.001	Baseplate	1	-	-	-	-	D/L		
88		4		50.3	5972794.001	Lever	1	-	-	-	-	D/L		
89			6	66	5972899.001	Mounting Plate	1	-	-	-	-	B		
90	3			30	5972913.001	Plate	1	-	-	-	-			
91		4		70.2	5979612.001	Washer	1	-	-	-	-	B		
92		4		70.1	5979613.001	Washer	1	-	-	-	-	A		

PU Package unit

SPR Spare part recommendation

A - wearing parts and accessories

B - recommended spare parts for quick repair

C - recommended spare parts for distributors

D - recommended spare parts for central stores

Note A 5314

B 5316

C 4"

D 6"

L Left

R Right