

Spare Parts List



Vacuum-Belt Applicator

5324C / 5326C

Family	Type
Vacuum-Belt Applicator	5324C
	5326C

Table of Contents

1	Control Unit.....	3
2	Belt Unit - Drive.....	4
3	Belt Unit - Fan 5324C	5
4	Belt Unit - Fan 5326C	6
5	Spare parts register	7
6	Packaging / Accessories.....	8

Edition: 09/2022 - Part.-No. 9003809

Copyright

This documentation as well as translation hereof are property of cab Produkttechnik GmbH & Co. KG.

The replication, conversion, duplication or divulgement of the whole manual or parts of it for other intentions than its original intended purpose demand the previous written authorization by cab.

Editor

Regarding questions or comments please contact cab Produkttechnik GmbH & Co. KG.

Topicality

Due to the constant further development of our products discrepancies between documentation and product can occur.

Please check www.cab.de for the latest update.

Terms and conditions

Deliveries and performances are effected under the General conditions of sale of cab.

Germany
cab Produkttechnik GmbH & Co KG
Karlsruhe
Phone +49 721 6626 0
www.cab.de

USA
cab Technology, Inc.
Chelmsford, MA
Phone +1 978 250 8321
www.cab.de/us

Taiwan
cab Technology Co., Ltd.
Taipei
Phone +886 (02) 8227 3966
www.cab.de/tw

Singapore
cab Singapore Pte. Ltd.
Singapore
Phone +65 6931 9099
www.cab.de/en

France
cab Technologies S.à.r.l.
Niedermodern
Phone +33 388 722501
www.cab.de/fr

Mexico
cab Technology, Inc.
Juárez
Phone +52 656 682 4301
www.cab.de/es

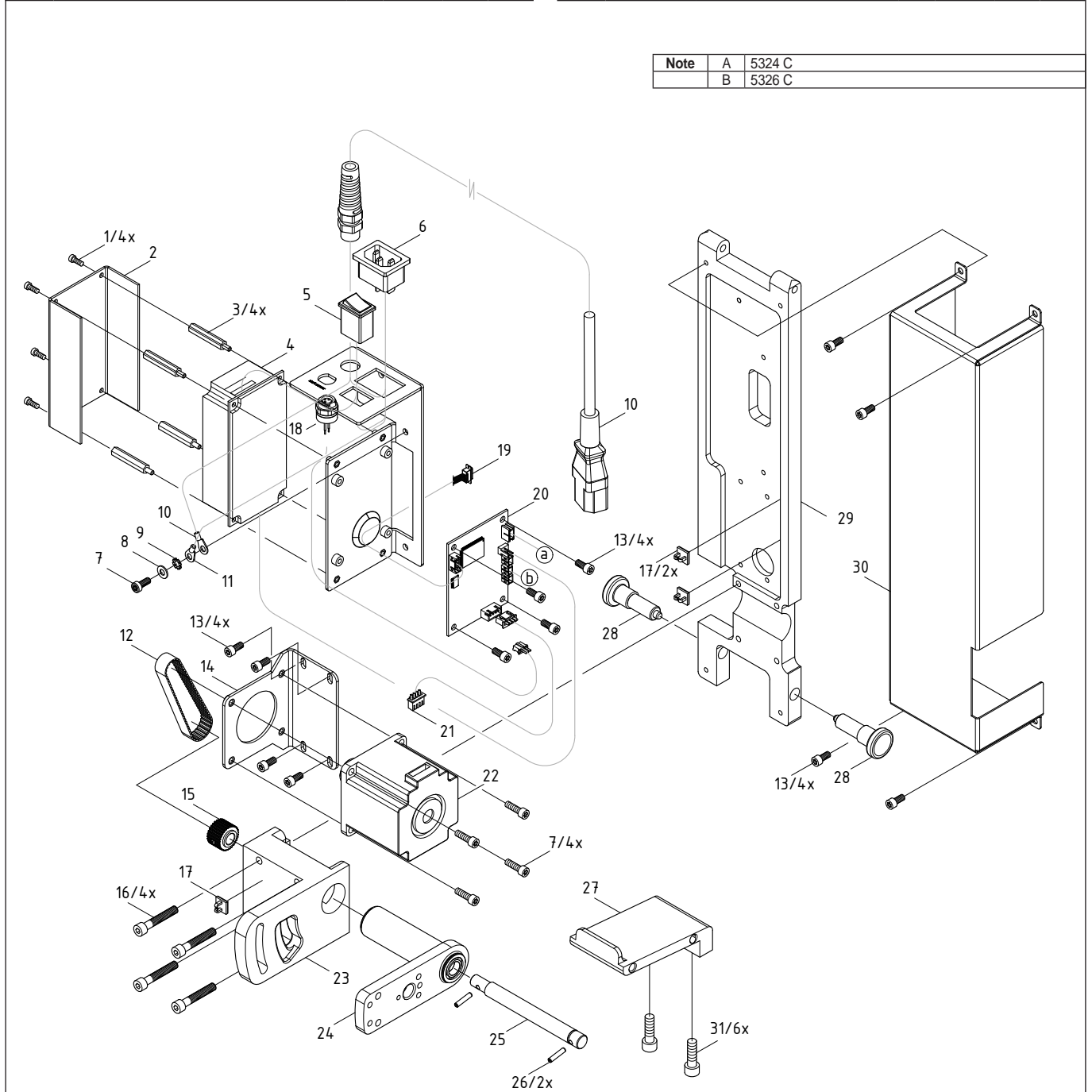
China
cab (Shanghai) Trading Co., Ltd.
Shanghai
Phone +86 (021) 6236 3161
www.cab.de/cn

South Africa
cab Technology (Pty) Ltd.
Randburg
Phone +27 11 886 3580
www.cab.de/za

No.	Part-No.	Description	PU	Note	Serial No.	
					from	to
1	5902838.001	Screw DIN7984 M3x6	10			
2	5948154.001	Cover	1			
3	5900041.001	Distance Bolt M3x30	10			
4	5919058.001	Power Supply	1			
5	5905349.001	Switch	1			
6	5918052.001	Power Plug	1			
7	5902565.001	Screw DIN7984-M4x10	10			
8	5903033.001	Washer DIN125-A4.3	10			
9	5903011.001	Toothed Washer DIN6797-A4.3	10			
10	5555001.001	Cable	1			
11	5534732.001	Cable Grounding	1			
12	5905605.001	Belt 91MXL 037	1			
13	5902571.001	Screw DIN7984-M4x6	10			
14	5972738.001	Bracket	1			
15	5972456.001	Gear 29	1			
16	5902290.001	Screw DIN912-M5x35	10			

No.	Part-No.	Description	PU	Note	Serial No.	
					from	to
17	5901575.001	Cable Clamp	10			
18	5970246.001	Sensor Adapter	1			
19	5555004.001	Cable USB	1			
20	5551244.001	PCB Applicator Control	1			
21	5952587.001	Cable Motor	1			
22	5946206.001	Stepper Motor	1			
23	5972858.001	Retainer	1			
24	5972460.001	Adapter	1			
25.1	5972595.001	Motor Shaft	1	A		
25.2	5972405.001	Motor Shaft	1	B		
26	5904031.001	Pin DIN1481-3x14	10			
27	5972859.001	Locking Part	1			
28	5906778.001	Locking Pin	1			
29	5972862.001	Support	1			
30	5972699.001	Cover	1			
31	5902159.001	Screw DIN912-M5x12	10			

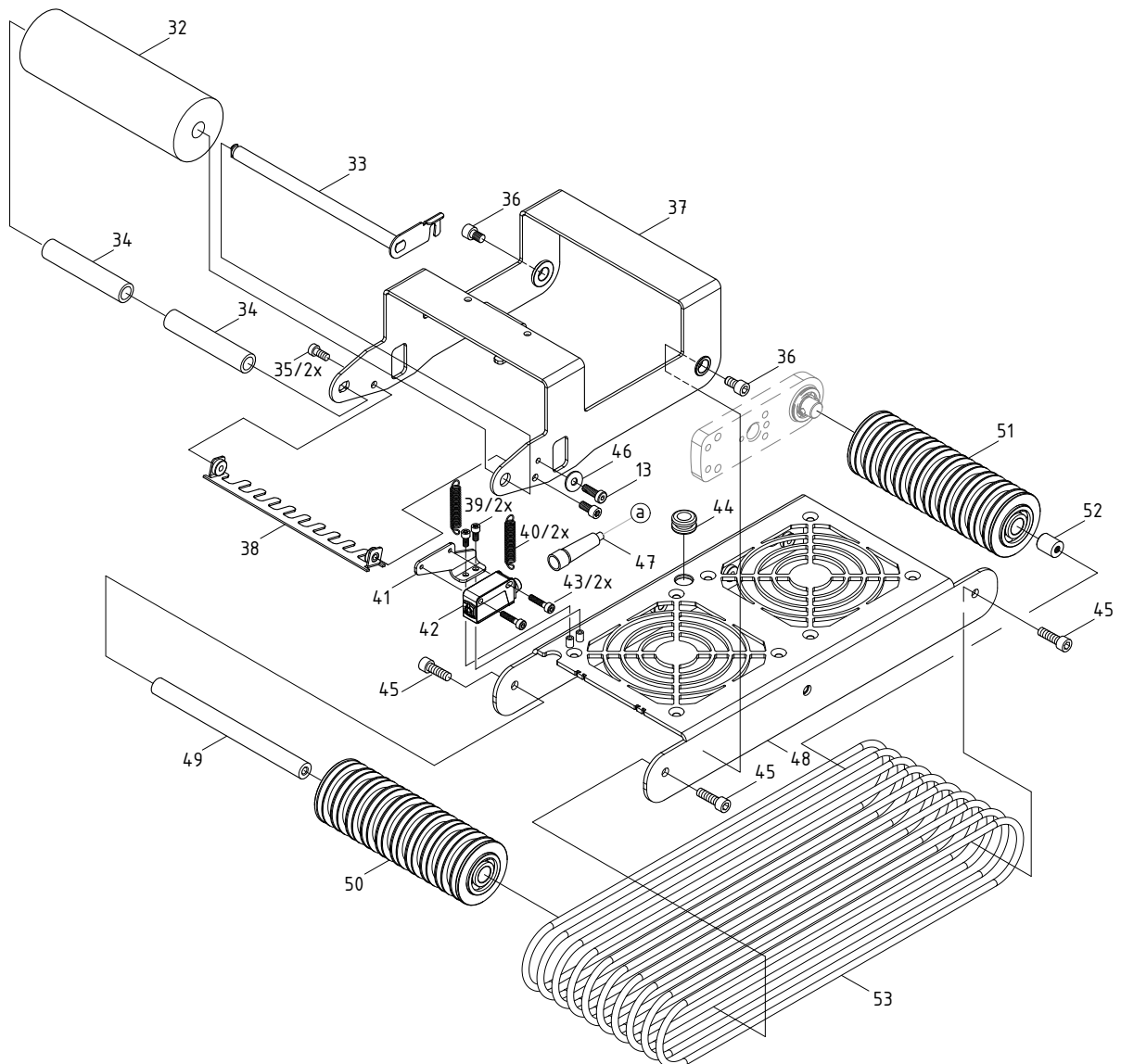
Note	A	5324 C
	B	5326 C



No.	Part-No.	Description	PU	Note	Serial No.	
					from	to
32.1	5972772.001	Foam Roller	1	A		
32.2	5972415.001	Foam Roller	1	B		
33.1	5972761.001	Axle	1	A		
33.2	5972453.001	Axle	1	B		
34	5972187.001	Bushing	1			
35	5902358.001	Screw DIN7984-M4x6	10			
36	5972732.001	Pivot Pin	1			
37.1	5972758.001	Lever	1	A		
37.2	5972794.001	Lever	1	B		
38.1	5972763.001	Fender	1	A		
38.2	5972617.001	Fender	1	B		
39	5902896.001	Screw DIN7984-M3x5	10			
40	5905083.001	Spring	1			
41	5972733.001	Holder	1			
42	5918982.001	Sensor	1			
43	5902003.001	Screw DIN912-M3x14	10			

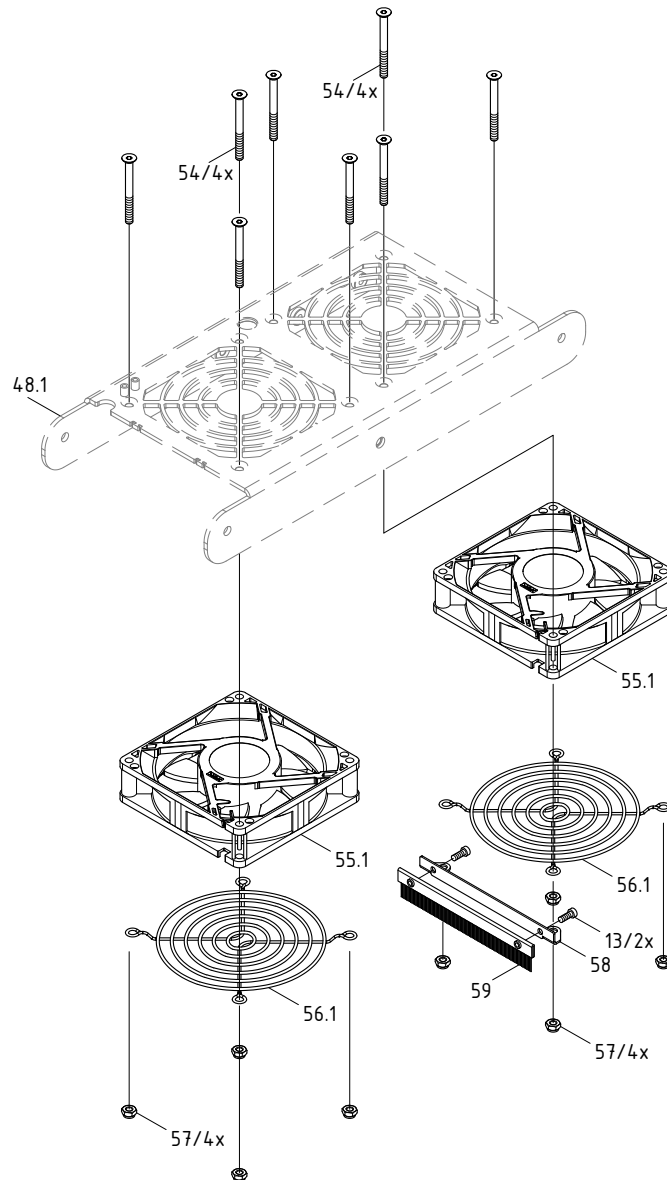
No.	Part-No.	Description	PU	Note	Serial No.	
					from	to
44	5905271.001	Grommet 8x3	10			
45	5902138.001	Screw DIN912-M5x10	10			
46	5903003.001	Washer DIN125-A4.3	10			
47	5971518.001	Cable Sensor	1			
48.1	5984842.001	Baseplate	1	A		
48.2	5972792.001	Baseplate	1	B		
49.1	5971483.001	Axle	1	A		
49.2	5972399.001	Axle	1	B		
50.1	5972754.001	Profile Axle	1	A		
50.2	5972401.001	Profile Axle	1	B		
51.1	5972757.001	Profile Axle	1	A		
51.2	5972406.001	Profile Axle	1	B		
52	5972589.001	Bearing Journal	1			
53.1	5907407.001	Circular Belt 4,0x616-V	1			
53.2	5906309.001	Circular Belt 4,0x776	1			

Note	A	5324 C
	B	5326 C



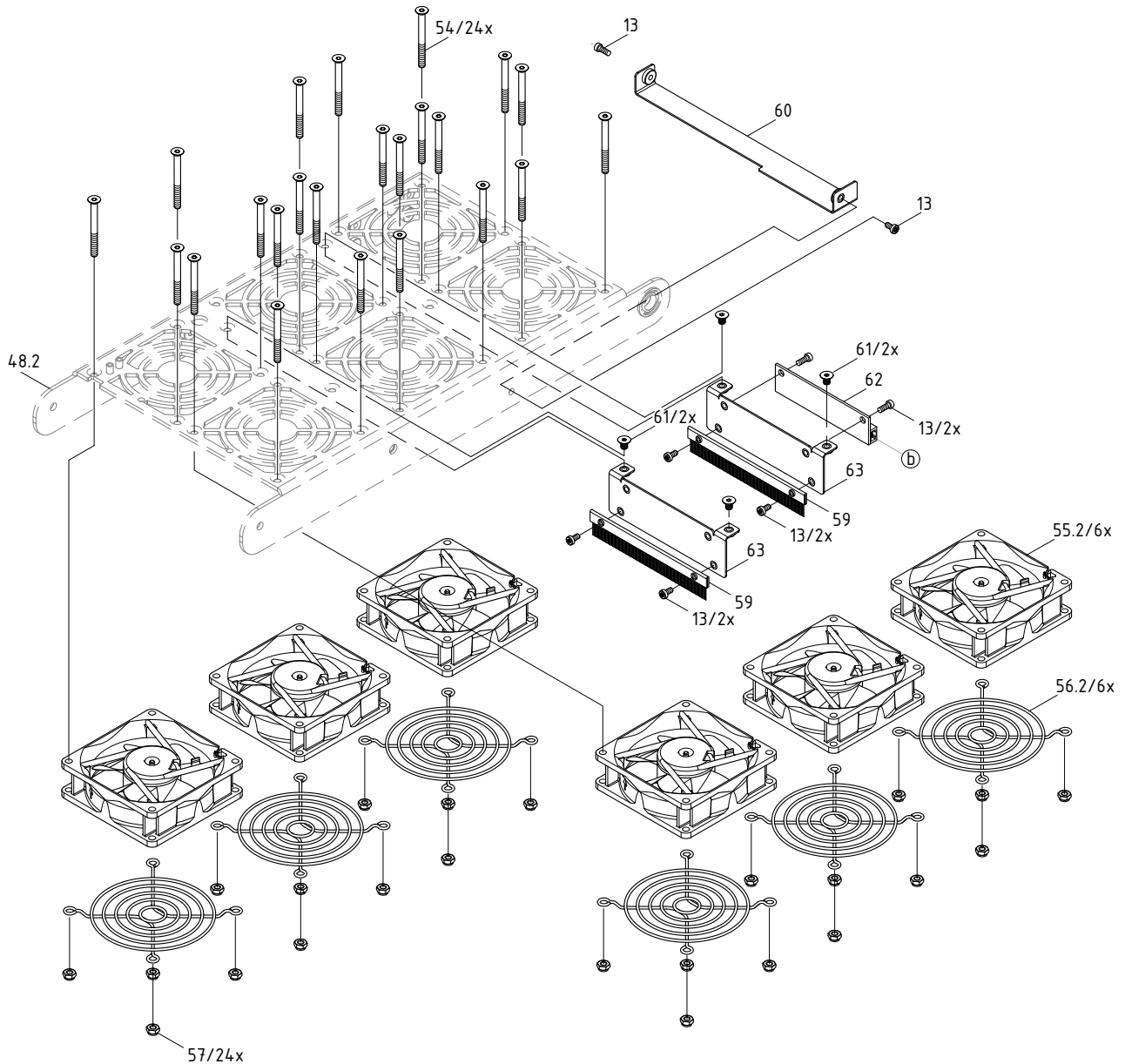
No.	Part-No.	Description	PU	Note	Serial No.	
					from	to
13	5902571.001	Screw DIN7984-M4x6	10			
48.1	5984842.001	Baseplate	1	A		
54	5902015.001	Screw DIN7991-M4x35	10			
55.1	5971790.001	Fan	1	A		
56.1	5907423.001	Fan Protection Grid 92x92mm	1	A		
57	5902570.001	Nut DIN982-M4	10			
58	5972749.001	Brush Holder	1			
59	5961639.001	Antistatic Brush	1			

Note	A	5324 C
	B	5326 C



No.	Part-No.	Description	PU	Note	Serial No.	
					from	to
35	5902358.001	Screw DIN7984-M4x6	10			
48.2	5972792.001	Baseplate	1	B		
54	5902015.001	Screw DIN7991-M4x35	10			
55.2	5972173.001	Fan	1	B		
56.2	5906299.001	Fan Protection Grid 80x80mm	1	B		
57	5902570.001	Nut DIN982-M4	10			
59	5961639.001	Antistatic Brush	1			
60	5972619.001	Cover	1			
61	5902304.001	Screw DIN7991-M4x6	10			
62	5551232.001	Distribution PCB Fan	1			
63	5972899.001	Mounting Plate	1			

Note	A	5324 C
	B	5326 C



Pos.	Figure/Page			No.	Part No.	Description	PU	SPR				Notes	Serial No.		
								from	to						
1	3			11	5534732.001	Cable Grounding	1	-	-	-	-				
2			6	62	5551232.001	Distribution PCB Fan	1	-	-	C	D				
3	3			20	5551244.001	PCB Applicator Control	1	-	-	C	D				
4	3			10	5555001.001	Cable	1	-	-	-	-				
5	3			19	5555004.001	Cable USB	1	-	-	-	-				
6	3			3	5900041.001	Distance Bolt M3x30	10	-	-	-	-				
7	3			17	5901575.001	Cable Clamp	10	-	-	-	-				
8		4		43	5902003.001	Screw DIN912-M3x14	10	-	-	-	-				
9			5	6	54	5902015.001	Screw DIN7991-M4x35	10	-	-	-	-			
10		4		45	5902138.001	Screw DIN912-M5x10	10	-	-	-	-				
11	3			31	5902159.001	Screw DIN912-M5x12	10	-	-	-	-				
12	3			16	5902290.001	Screw DIN912-M5x35	10	-	-	-	-				
13			6	61	5902304.001	Screw DIN7991-M4x6	10	-	-	-	-				
14		4		6	35	5902358.001	Screw DIN7984-M4x6	10	-	-	-	-			
15	3			7	5902565.001	Screw DIN7984-M4x10	10	-	-	-	-				
16			5	6	57	5902570.001	Nut DIN982-M4	10	-	-	-	-			
17	3		5	13	5902571.001	Screw DIN7984-M4x6	10	-	-	-	-				
18	3			1	5902838.001	Screw DIN7984 M3x6	10	-	-	-	-				
19		4		39	5902896.001	Screw DIN7984-M3x5	10	-	-	-	-				
20		4		46	5903003.001	Washer DIN125-A4.3	10	-	-	-	-				
21	3			9	5903011.001	Toothed Washer DIN6797-A4.3	10	-	-	-	-				
22	3			8	5903033.001	Washer DIN125-A4.3	10	-	-	-	-				
23	3			26	5904031.001	Pin DIN1481-3x14	10	-	-	-	-				
24		4		40	5905083.001	Spring	1	-	-	C	D				
25		4		44	5905271.001	Grommet 8x3	10	-	-	-	-				
26	3			5	5905349.001	Switch	1	-	-	-	-				
27	3			12	5905605.001	Belt 91MXL 037	1	-	-	-	-				
28			6	56.2	5906299.001	Fan Protection Grid 80x80mm	1	-	-	-	-	B			
29		4		53.2	5906309.001	Circular Belt 4,0x776	1	-	-	C	D				
30	3			28	5906778.001	Locking Pin	1	-	-	-	-				
31		4		53.1	5907407.001	Circular Belt 4,0x616-V	1	-	-	C	D				
32			5	56.1	5907423.001	Fan Protection Grid 92x92mm	1	-	-	-	-	A			
33	3			6	5918052.001	Power Plug	1	-	-	-	-				
34		4		42	5918982.001	Sensor	1	-	-	-	-				
35	3			4	5919058.001	Power Supply	1	-	-	-	-				
36	3			22	5946206.001	Stepper Motor	1	-	-	C	D				
37	3			2	5948154.001	Cover	1	-	-	-	-				
38	3			21	5952587.001	Cable Motor	1	-	-	-	D				
39			5	6	59	5961639.001	Antistatic Brush	1	-	-	-	-	A		
40	3			18	5970246.001	Sensor Adapter	1	-	-	C	D				
41		4		49.1	5971483.001	Axle	1	-	-	-	-	A			
42		4		47	5971518.001	Cable Sensor	1	-	-	-	-	A			
43			5	55.1	5971790.001	Fan	1	-	-	-	-	A			
44			6	55.2	5972173.001	Fan	1	-	B	C	D	B			
45		4		34	5972187.001	Bushing	1	-	-	-	-				
46		4		49.2	5972399.001	Axle	1	-	-	-	-	B			
47		4		50.2	5972401.001	Profile Axle	1	-	-	-	-	B			
48	3			25.2	5972405.001	Motor Shaft	1	-	-	-	-	B			
49		4		51.2	5972406.001	Profile Axle	1	-	-	-	-	B			
50		4		32.2	5972415.001	Foam Roller	1	A	B	C	D	B			
51		4		33.2	5972453.001	Axle	1	-	-	-	-	B			
52	3			15	5972456.001	Gear 29	1	-	-	-	-				
53	3			24	5972460.001	Adapter	1	-	-	-	-				
54		4		52	5972589.001	Bearing Journal	1	-	-	-	-				
55	3			25.1	5972595.001	Motor Shaft	1	-	-	-	-	A			
56		4		38.2	5972617.001	Fender	1	-	-	-	-	B			
57			6	60	5972619.001	Cover	1	-	-	-	-	B			
58	3			30	5972699.001	Cover	1	-	-	-	-				
59		4		36	5972732.001	Pivot Pin	1	-	-	-	-				
60		4		41	5972733.001	Holder	1	-	-	-	-				

PU Package unit

Note

L Left
R Right
A 200
B 300
C 400M1 Appl. top down / horizontal
M2 Appl. upward
O Option

SPR Recommendation

A - wearing parts and accessories
B - recommended spare parts for quick repair
C - recommended spare parts for distributors
D - recommended spare parts for central stores

Pos.	Figure/Page			No.	Part No.	Description	PU	SPR				Notes	Serial No.	
61	3			14	5972738.001	Bracket	1	-	-	-	-			
62			5	58	5972749.001	Brush Holder	1	-	-	-	-	A		
63		4		50.1	5972754.001	Profile Axle	1	-	-	-	-	A		
64		4		51.1	5972757.001	Profile Axle	1	-	-	-	-	A		
65		4		37.1	5972758.001	Lever	1	-	-	-	-	A		
66		4		33.1	5972761.001	Axle	1	-	-	-	-	A		
67		4		38.1	5972763.001	Fender	1	-	-	-	-	A		
68		4		32.1	5972772.001	Foam Roller	1	-	-	-	-	A		
69		4	6	48.2	5972792.001	Baseplate	1	-	-	-	-	B		
70		4		37.2	5972794.001	Lever	1	-	-	-	-	B		
71	3			23	5972858.001	Retainer	1	-	-	-	-			
72	3			27	5972859.001	Locking Part	1	-	-	-	-			
73	3			29	5972862.001	Support	1	-	-	-	-			
74			6	63	5972899.001	Mounting Plate	1	-	-	-	-	B		
75		4	5	48.1	5984842.001	Baseplate	1	-	-	-	-	A		

PU Package unit

SPR Recommendation

A - wearing parts and accessories

B - recommended spare parts for quick repair

C - recommended spare parts for distributors

D - recommended spare parts for central stores

Note

L Left

R Right

A 200

B 300

C 400

M1 Appl. top down / horizontal

M2 Appl. upward

O Option