

## Test Report

No: 10518879(4a) A3

Date: 21-Jul-2021

Page 1 of 4

cab Produkttechnik GmbH & Co. KG  
Wilhelm-Schickard-Str.14, 76131 Karlsruhe, Germany

The following sample(s) was/were submitted and identified by/on behalf of the client as:

Sample Name : M71

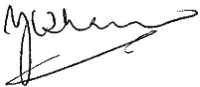
Sample Receiving Date : 07-Jul-2021  
Testing Period : 07-Jul-2021 to 21-Jul-2021

---

---

Test Result(s) : Please refer to next page(s).

Signed for and on behalf of  
SGS Testing & Control Services Singapore Pte Ltd



Y.C. Tham  
Technical Manager, Multi-Lab



Test Location: 30 Boon Lay Way, #02-02, Singapore 609957

This document is issued by the Company under its General Conditions of Service accessible at <http://www.sgs.com/en/Terms-and-Conditions.aspx> and, for electronic format documents, subject to Terms and Conditions for Electronic Documents at <http://www.sgs.com/en/Terms-and-Conditions/Terms-e-Document.aspx>. Attention is drawn to the limitation of liability, indemnification and jurisdiction issues defined therein. Any holder of this document is advised that information contained hereon reflects the Company's findings at the time of its intervention only and within the limits of Client's instructions, if any. The Company's sole responsibility is to its Client and this document does not exonerate parties to a transaction from exercising all their rights and obligations under the transaction documents. Any unauthorized alteration, forgery or falsification of the content or appearance of this document is unlawful and offenders may be prosecuted to the fullest extent of the law. Unless otherwise stated the results shown in this test report refer only to the sample(s) tested and such sample(s) are retained for 30 days only. This document cannot be reproduced except in full, without prior approval of the Company.

**Test Result(s):**

Sample Description : Black Film

Test Item(s):	Unit	Method	Results	MDL
<b>Halogen</b>				
Halogen - Bromine (Br)	mg/kg	With reference to BS EN 14582. Analysis was performed by IC	n.d.	50
Halogen - Chlorine (Cl)	mg/kg	With reference to BS EN 14582. Analysis was performed by IC	n.d.	50
Halogen - Fluorine (F)	mg/kg	With reference to BS EN 14582. Analysis was performed by IC	n.d.	50
Halogen - Iodine (I)	mg/kg	With reference to BS EN 14582. Analysis was performed by IC	n.d.	50

Note: (1) mg/kg = ppm ; 0.1wt% = 1000ppm  
 (2) n.d.= Not Detected  
 (3) MDL = Method Detection Limit

Lab Analyst(s): Jenny

**For your information, the standard IEC 61249-2-21:2003** regarding materials for printed circuit and others interconnection structures, requires limits for halogen contents on epoxide isolating resins, the received sample complies with the limits described below:

- Maximum content of total chlorine : 900ppm
- Maximum content of total bromine : 900ppm
- Maximum content of total halogens : 1500ppm

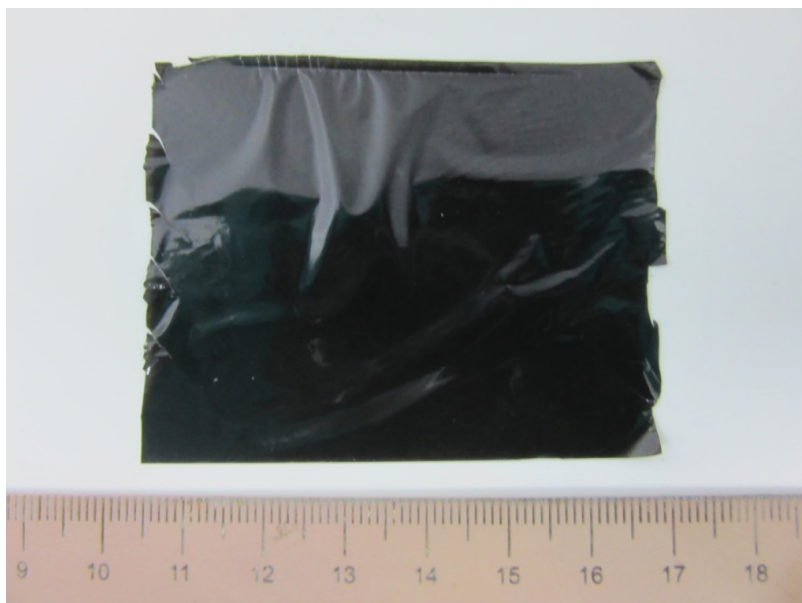
Test Location: 30 Boon Lay Way, #02-02, Singapore 609957

This document is issued by the Company under its General Conditions of Service accessible at <http://www.sgs.com/en/Terms-and-Conditions.aspx> and, for electronic format documents, subject to Terms and Conditions for Electronic Documents at <http://www.sgs.com/en/Terms-and-Conditions/Terms-e-Document.aspx>. Attention is drawn to the limitation of liability, indemnification and jurisdiction issues defined therein. Any holder of this document is advised that information contained hereon reflects the Company's findings at the time of its intervention only and within the limits of Client's instructions, if any. The Company's sole responsibility is to its Client and this document does not exonerate parties to a transaction from exercising all their rights and obligations under the transaction documents. Any unauthorized alteration, forgery or falsification of the content or appearance of this document is unlawful and offenders may be prosecuted to the fullest extent of the law. Unless otherwise stated the results shown in this test report refer only to the sample(s) tested and such sample(s) are retained for 30 days only. This document cannot be reproduced except in full, without prior approval of the Company.

**Sample photo:**

Sample Description : Black Film

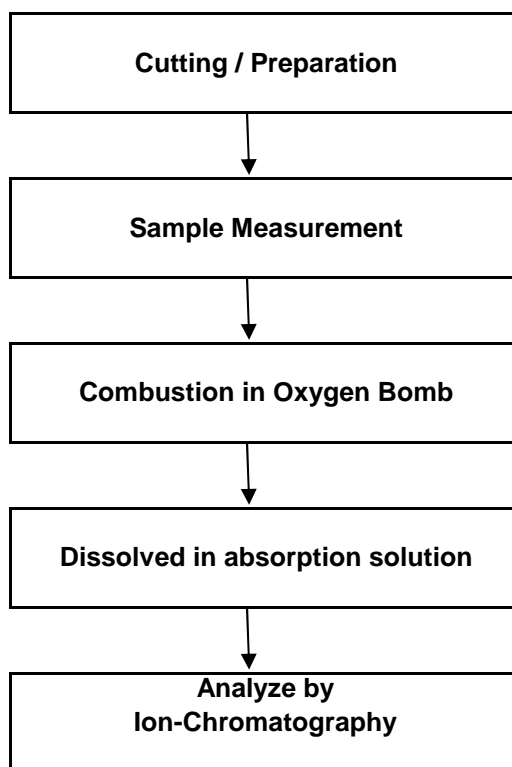
SGS authenticate the photo on original report only



Test Location: 30 Boon Lay Way, #02-02, Singapore 609957

This document is issued by the Company under its General Conditions of Service accessible at <http://www.sgs.com/en/Terms-and-Conditions.aspx> and, for electronic format documents, subject to Terms and Conditions for Electronic Documents at <http://www.sgs.com/en/Terms-and-Conditions/Terms-e-Document.aspx>. Attention is drawn to the limitation of liability, indemnification and jurisdiction issues defined therein. Any holder of this document is advised that information contained hereon reflects the Company's findings at the time of its intervention only and within the limits of Client's instructions, if any. The Company's sole responsibility is to its Client and this document does not exonerate parties to a transaction from exercising all their rights and obligations under the transaction documents. Any unauthorized alteration, forgery or falsification of the content or appearance of this document is unlawful and offenders may be prosecuted to the fullest extent of the law. Unless otherwise stated the results shown in this test report refer only to the sample(s) tested and such sample(s) are retained for 30 days only. This document cannot be reproduced except in full, without prior approval of the Company.

### Process Flow of BS EN 14582 (Halogen Analysis)



\*\*\*End of Report\*\*\*

Test Location: 30 Boon Lay Way, #02-02, Singapore 609957

This document is issued by the Company under its General Conditions of Service accessible at <http://www.sgs.com/en/Terms-and-Conditions.aspx> and, for electronic format documents, subject to Terms and Conditions for Electronic Documents at <http://www.sgs.com/en/Terms-and-Conditions/Terms-e-Document.aspx>. Attention is drawn to the limitation of liability, indemnification and jurisdiction issues defined therein. Any holder of this document is advised that information contained hereon reflects the Company's findings at the time of its intervention only and within the limits of Client's instructions, if any. The Company's sole responsibility is to its Client and this document does not exonerate parties to a transaction from exercising all their rights and obligations under the transaction documents. Any unauthorized alteration, forgery or falsification of the content or appearance of this document is unlawful and offenders may be prosecuted to the fullest extent of the law. Unless otherwise stated the results shown in this test report refer only to the sample(s) tested and such sample(s) are retained for 30 days only. This document cannot be reproduced except in full, without prior approval of the Company.