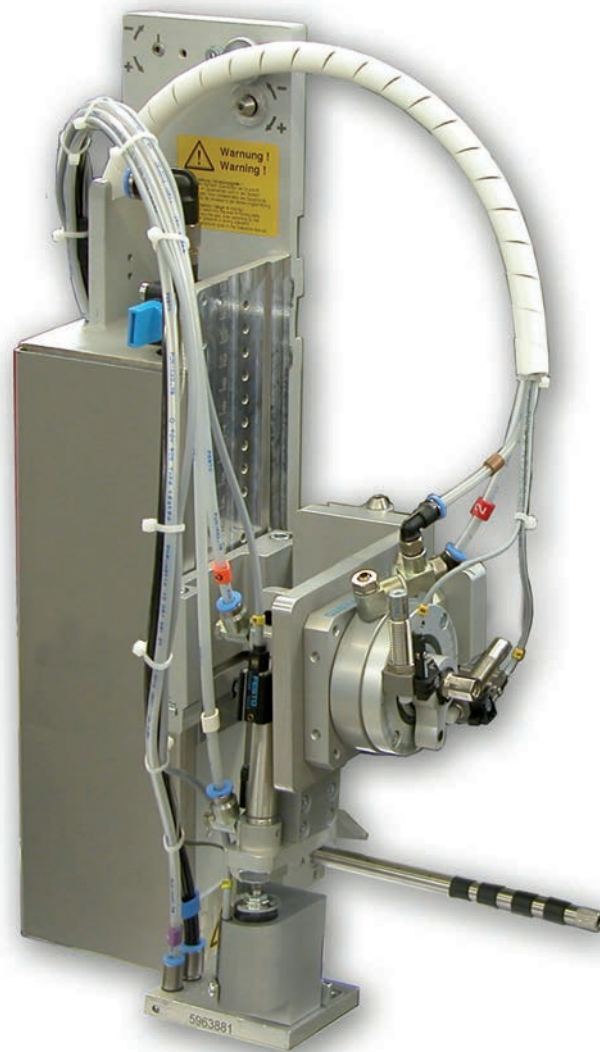


Spare Parts List



Swing Applicator

3214

2 Spare parts list for the following products

2

Family	Type
Swing Applicator	3214

Edition: 07/2021 - Part.-No. 9003704

Copyright

This documentation as well as translation hereof are property of cab Produkttechnik GmbH & Co. KG.

The replication, conversion, duplication or divulgement of the whole manual or parts of it for other intentions than its original intended purpose demand the previous written authorization by cab.

Editor

Regarding questions or comments please contact cab Produkttechnik GmbH & Co. KG.

Topicality

Due to the constant further development of our products discrepancies between documentation and product can occur. Please check www.cab.de for the latest update.

Terms and conditions

Deliveries and performances are effected under the General conditions of sale of cab.

Table of Contents

1	Retainer Assembly	3
2	Pneumatics Retainer Assembly	4
3	Electronics Retainer Assembly	5
4	Swing Cylinder / Guiding X	6
5	Cylinder Assembly X	7
6	Spare parts register	8
7	Packaging	9

Germany
cab Produkttechnik GmbH & Co KG
Karlsruhe
Phone +49 721 6626 0
www.cab.de

USA
cab Technology, Inc.
Chelmsford, MA
Phone +1 978 250 8321
www.cab.de/us

Taiwan
cab Technology Co., Ltd.
Taipei
Phone +886 (02) 8227 3966
www.cab.de/tw

China
cab (Shanghai) Trading Co., Ltd.
Guangzhou
Phone +86 (020) 2831 7358
www.cab.de/cn

France
cab Technologies S.à.r.l.
Niedermodern
Phone +33 388 722501
www.cab.de/fr

Mexico
cab Technology, Inc.
Juárez
Phone +52 656 682 4301
www.cab.de/es

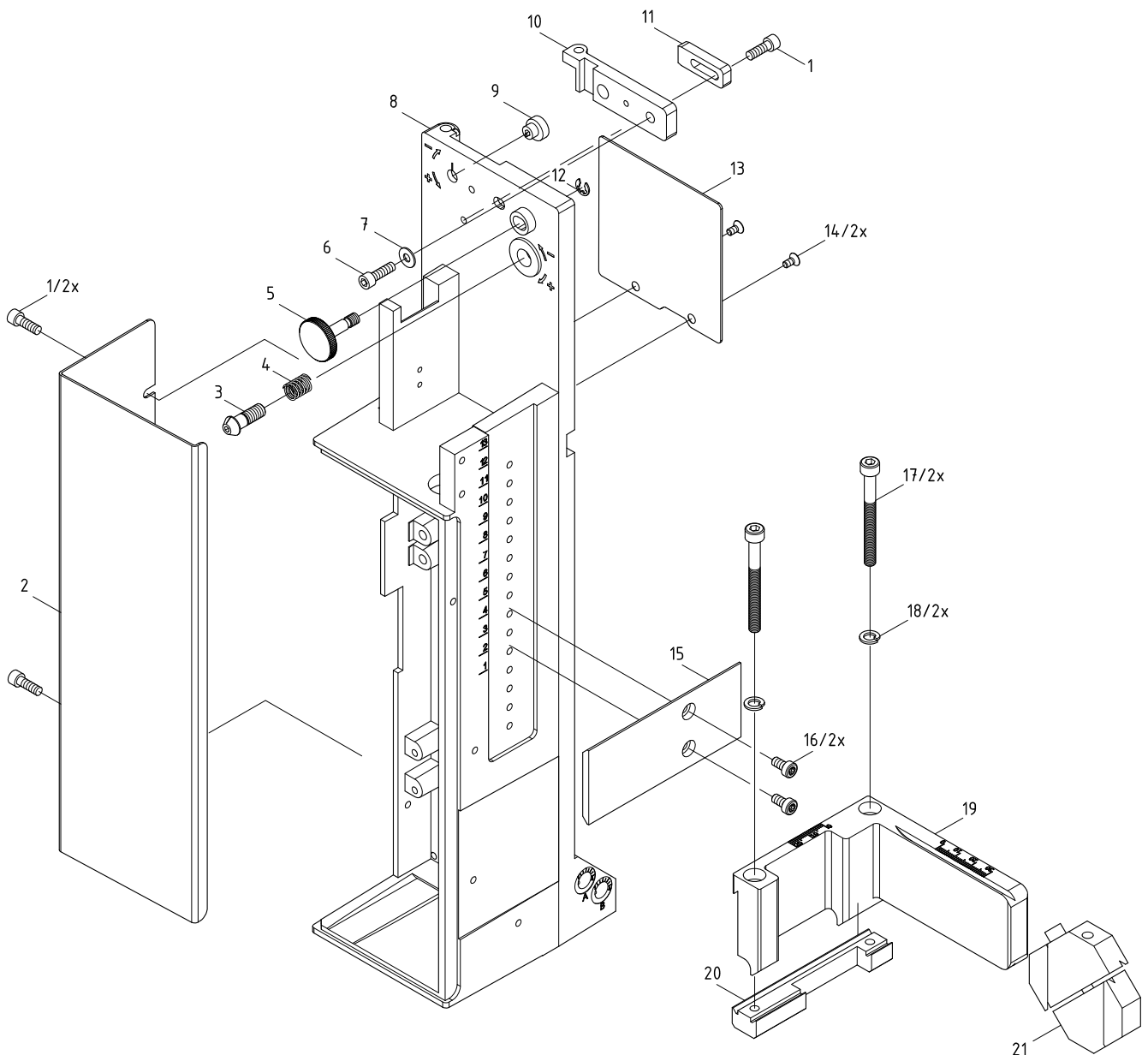
China
cab (Shanghai) Trading Co., Ltd.
Shanghai
Phone +86 (021) 6236 3161
www.cab.de/cn

South Africa
cab Technology (Pty) Ltd.
Randburg
Phone +27 11 886 3580
www.cab.de/za

No.	Part-No.	Description	PU	Note	Serial No.	
					from	to
1	5902489.001	Screw DIN7984-M4x8	10			
2	5964129.001	Cover	1			
3	5965963.001	Set Screw	1			
4	5904544.001	Spring	10			
5	5964367.001	Knurled Screw	1			
6	5902241.001	Screw DIN7984-M4x10	10			
7	5903003.001	Washer DIN125-A4.3	10			
8.1	5964036.001	Mounting Plate	1	L		
8.2	5964185.001	Mounting Plate	1	R		
9	5966530.001	Eccentric	1			
10.1	5966529.001	Hinges	1	L		
10.2	5966531.001	Hinges	1	R		
11	5964090.001	Interlock	1			

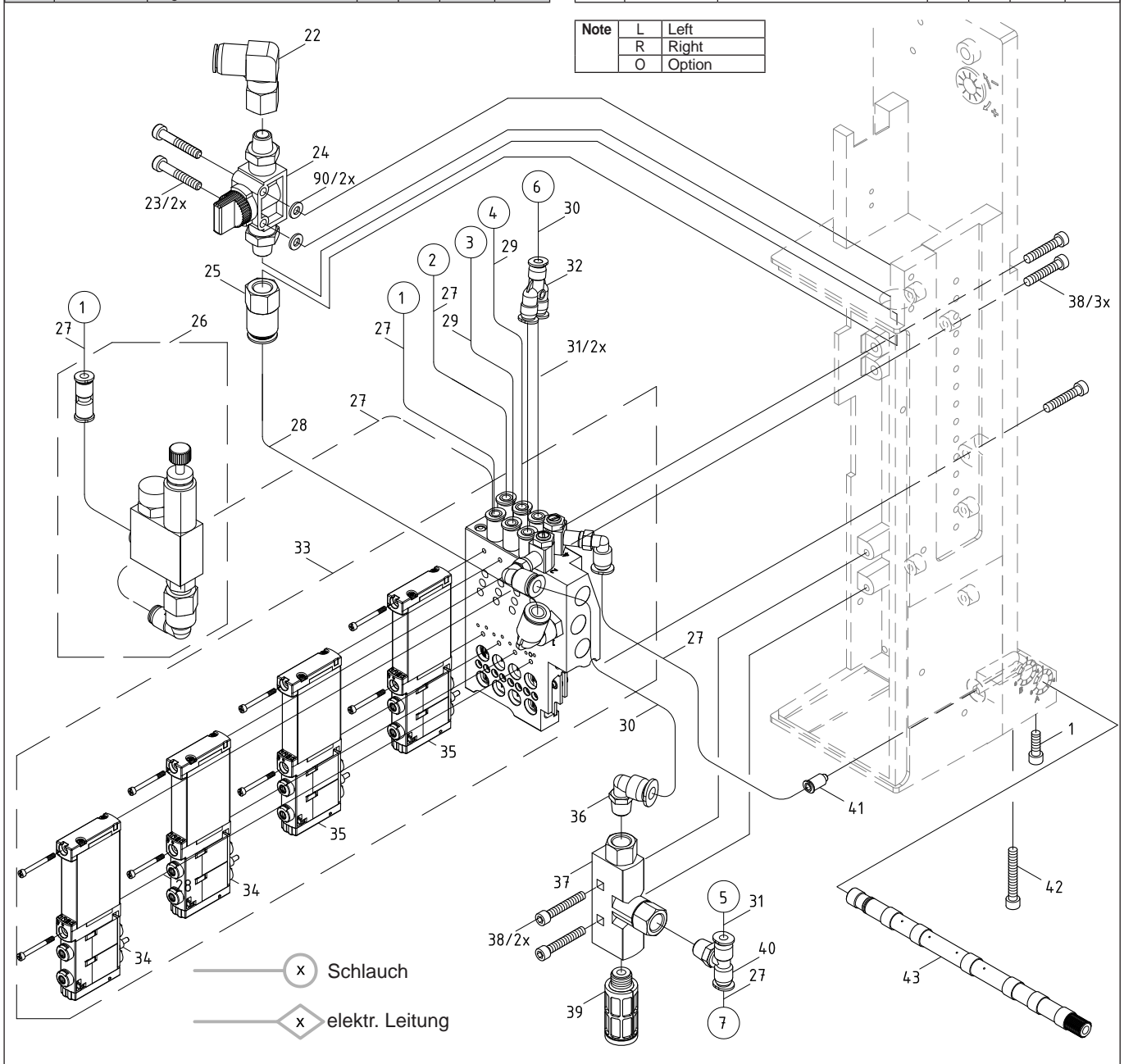
No.	Part-No.	Description	PU	Note	Serial No.	
					from	to
12	5903525.001	E-Ring DIN 6799-4	10			
13.1	5964429.001	Plate	1	L		
13.2	5964438.001	Plate	1	R		
14	5902021.001	Screw DIN7991-M3x6	10			
15	5964199.001	Adapter Profile	1			
16	5902837.001	Screw DIN7984-M4x8	10			
17	5902167.001	Screw DIN912-M5x50	10			
18	5903061.001	Lock Washer DIN127-B5	10			
19.1	5964331.001	Crossbeam	1	L		
19.2	5964312.001	Crossbeam	1	R		
20.1	5964328.001	Clamping Element	1	L		
20.2	5964310.001	Clamping Element	1	R		
21	5964062.001	Binder	1			

Note	L	Left
	R	Right



No.	Part-No.	Description	PU	Note	Serial No.	
					from	to
1	5902489.001	Screw DIN7984-M4x8	10			
22	5905285.001	Push-in L-Connector	1			
22	5905285.001	Push-in L-Connector	1			
23	5902863.001	Screw DIN7984-M4x25	10			
23	5902863.001	Screw DIN7984-M4x25	10			
24	5905284.001	Shut-off valve	1			
24	5905284.001	Shut-off valve	1			
25	5906842.001	Push-in/threaded Fitting	1			
25	5906842.001	Push-in/threaded Fitting	1			
26	5966414.001	Pressure Regulator	1	O		
27	5966460.001	Tube Ø4	2m			
28	5966465.001	Tube Ø8	2m			
29	5966466.001	Tube Ø4	2m			
30	5966464.001	Tube Ø6	2m			
31	5966463.001	Tube Ø4	2m			
32	5905972.001	Push-in Y-Fitting	1			
33.1	5976156.001	Valve Block	1	L		
33.2	5976157.001	Valve Block	1	R		
34	5907428.001	Magnetic Valve	1			

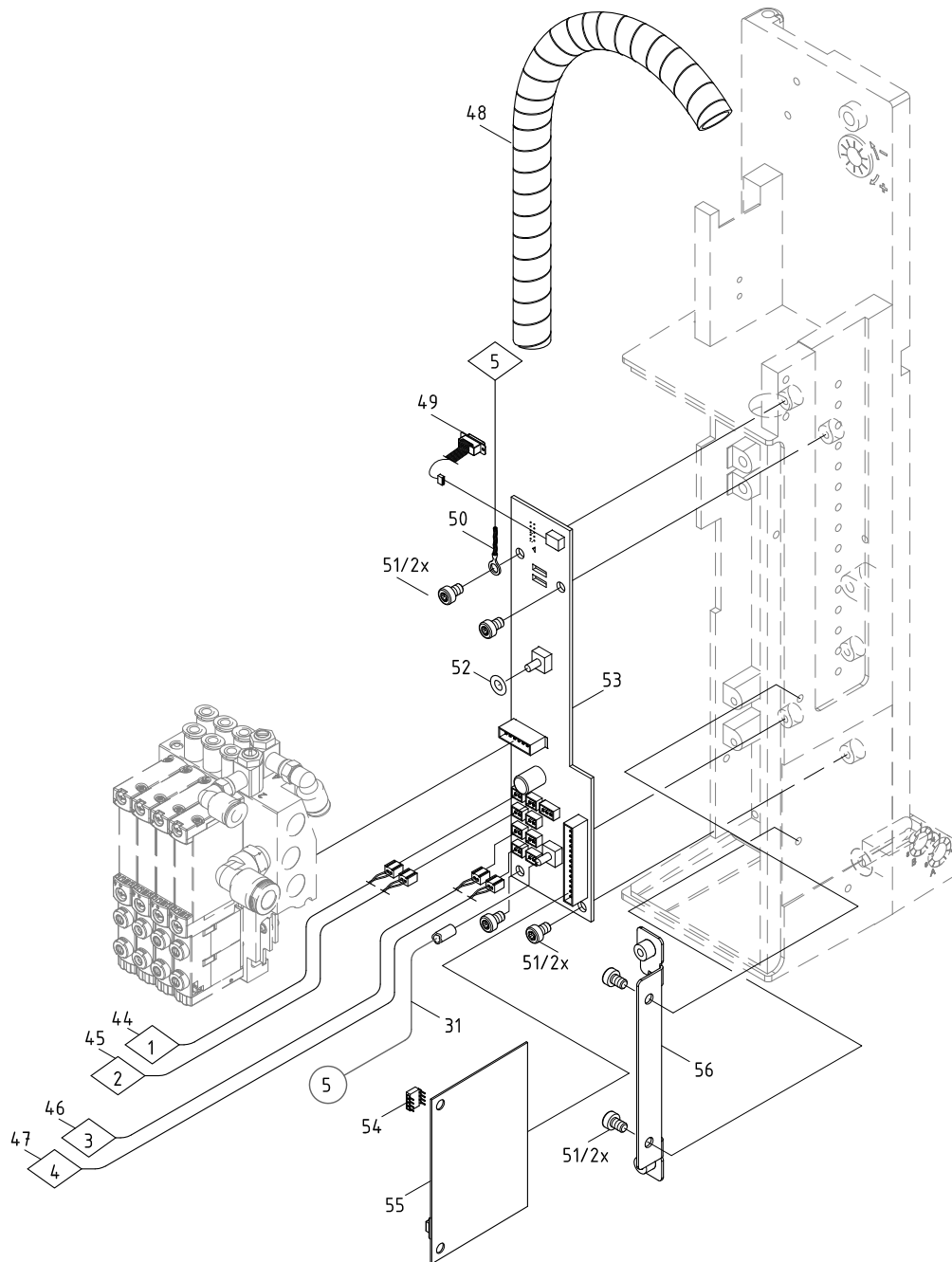
No.	Part-No.	Description	PU	Note	Serial No.	
					from	to
35	5907429.001	Magnetic Valve	1			
36	5906914.001	Push-in L-Connector	1			
36	5906914.001	Push-in L-Connector	1			
37	5906844.001	Vacuum Generator	1			
37	5906844.001	Vacuum Generator	1			
38	5902862.001	Screw DIN7984-M4x20	10			
38	5902862.001	Screw DIN7984-M4x20	10			
38	5902862.001	Screw DIN7984-M4x20	10			
38	5902862.001	Screw DIN7984-M4x20	10			
39	5905257.001	Silencer	1			
39	5905257.001	Silencer	1			
40	5906915.001	Push-in T-Connector	1			
40	5906915.001	Push-in T-Connector	1			
41	5905283.001	Push-in/threaded Fitting	1			
41	5905283.001	Push-in/threaded Fitting	1			
42	5902420.001	Screw DIN7984-M4x20	10			
43.1	5964277.001	Blow Tube 2"	1			
43.2	5964095.001	Blow Tube 4"	1			
90	5903089.001	Washer DIN988-4x8x1,0	10			15637





No.	Part-No.	Description	PU	Note	Serial No.	
					from	to
31	5966463.001	Tube Ø4	2m			
44	5966556.001	Sensor	1			
45	5966557.001	Sensor	1			
46	5966558.001	Sensor	1			
47	5966559.001	Sensor	1			
48	5901612.001	Spiral Tube	1			
49	5955586.001	Cable	1			
50	5964590.001	Cable	1			

No.	Part-No.	Description	PU	Note	Serial No.	
					from	to
51	5902571.001	Screw DIN7984-M4x6	10			
51	5902571.001	Screw DIN7984-M4x6	10			
52	5906943.001	Sealing Ring	10			
53.1	5971416.001	PCB Applicator Interfaces	1	L		
53.2	5971417.001	PCB Applicator interfaces	1	R		
54	5966570.001	EEPROM	1			
55	5955575.001	Applicator Control	1			
56	5966417.001	Retainer	1			

Note	L	Left
	R	Right

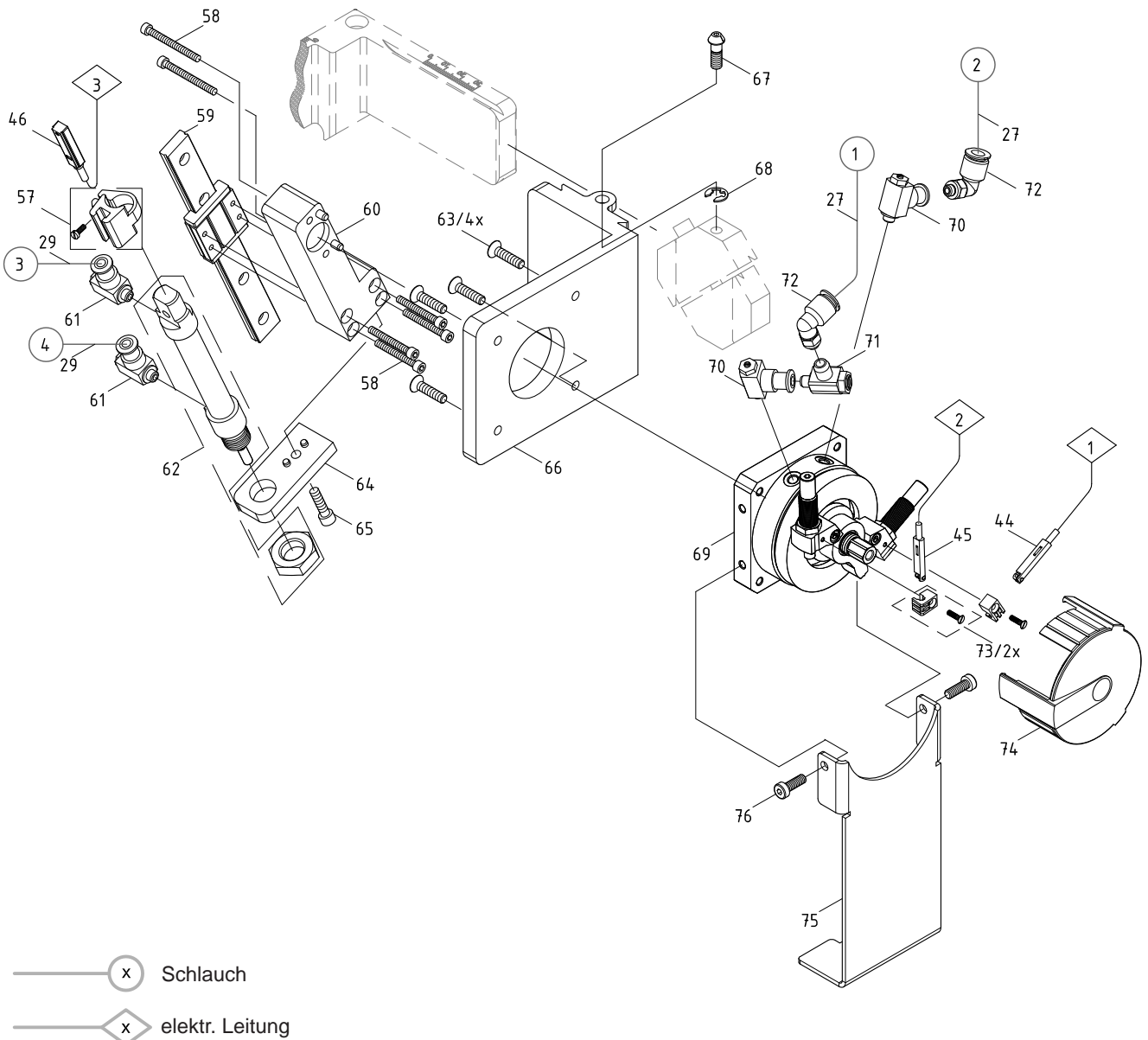


 Schlauch
 elektr. Leitung

No.	Part-No.	Description	PU	Note	Serial No.	
					from	to
27	5966460.001	Tube Ø4	2m			
29	5966466.001	Tube Ø4	2m			
44	5966556.001	Sensor	1			
45	5966557.001	Sensor	1			
46	5966558.001	Sensor	1			
57	5906646.001	Mounting Clip	1			
58	5902011.001	Screw DIN912-M3x20	10			
59	5917932.001	Guide Rail	1			
60.1	5966924.001	Pivot Arm	1	L		
60.2	5979277.001	Pivot Arm	1	R		
61	5906636.001	One-way Flow Control Valve	1			
62	5906645.001	Cylinder	1			
63	5902143.001	Screw DIN7991-M4x16	10			
64	5966538.001	Retainer	1			

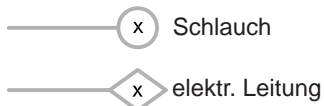
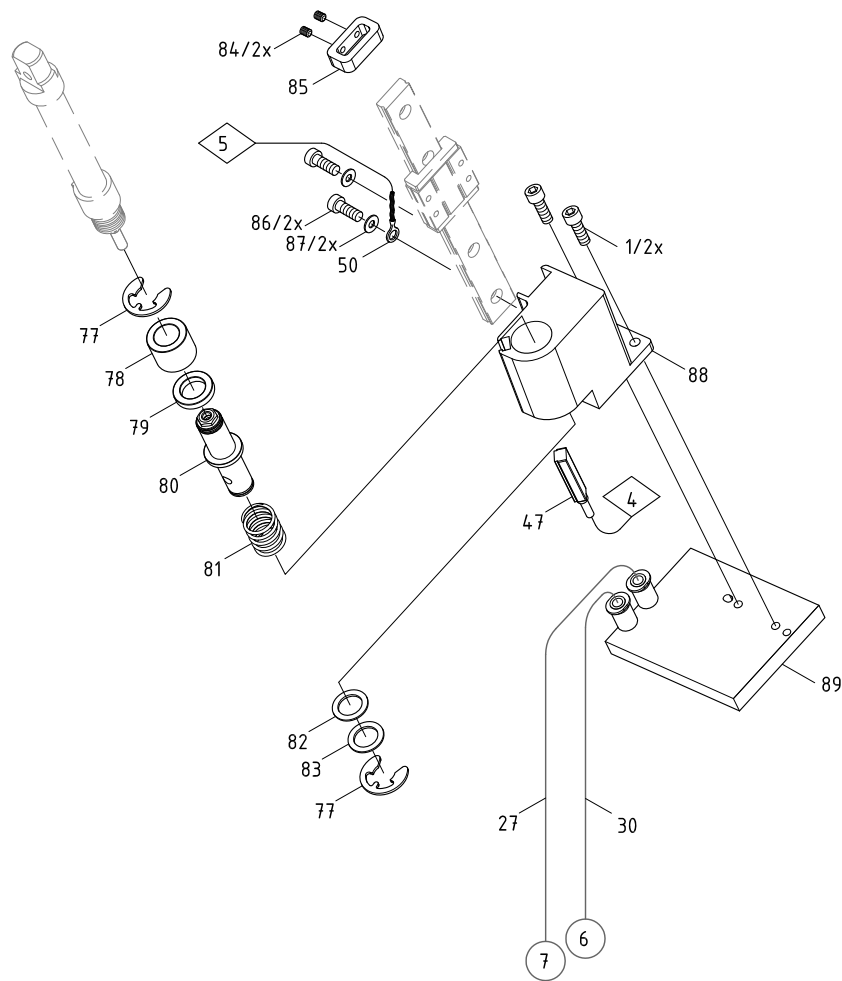
No.	Part-No.	Description	PU	Note	Serial No.	
					from	to
65	5902562.001	Screw DIN7984 M4x14	10			
66.1	5966536.001	Adjustment Bracket	1	L		
66.2	5979282.001	Adjustment Bracket	1	R		
67	5964061.001	Set Screw	1			
68	5903505.001	E-Ring DIN6799-5	10			
69	5966923.001	Swing Drive	1			
70	5905249.001	One-way Flow Control Valve	1			
71	5905470.001	One-way Flow Control Valve	1			
72	5905255.001	Push-in L-Connector	1			
73	5907061.001	Sensor Retainer	1			
74	5907066.001	Cover	1			
75.1	5971533.001	Transport Lock	1	L		
75.2	5979281.001	Transport Lock	1	R		
76	5902358.001	Screw DIN7984-M4x6	10			

Note	L	Left
	R	Right



No.	Part-No.	Description	PU	Note	Serial No.	
					from	to
1	5902489.001	Screw DIN7984-M4x8	10			
27	5966460.001	Tube Ø4	2m			
30	5966464.001	Tube Ø6	2m			
47	5966559.001	Sensor	1			
50	5964590.001	Cable	1			
77	5903510.001	E-Ring DIN6799-9	10			
78	5941808.001	Bushing	1			
79	5905602.001	Ring Magnet	1			
80	5949191.001	Adapter Bolt	1			
81	5905096.001	Spring	5			
82	5521158.001	Washer	1			
83	5521157.001	Washer	1			
84	5904528.001	Set Screw DIN913-M3x4	10			
85	5966918.001	Stopper	1			
86	5902010.001	Screw DIN912-M3x10	10			
87	5903004.001	Washer DIN125-A3.2	10			
88.1	5966534.001	Tamp Retainer	1	L		
88.2	5979283.001	Tamp Retainer	1	R		
89		Tamp	1			

Note	L	Left
	R	Right



Pos.	Figure/Page				No.	Part No.	Description	PU	SPR				Notes	Serial No.	
									from	to					
1				7	83	5521157.001	Washer	1	-	-	-	-			
2				7	82	5521158.001	Washer	1	-	-	-	-			
3		5			48	5901612.001	Spiral Tube	1	-	-	-	-			
4				7	86	5902010.001	Screw DIN912-M3x10	10	-	-	-	-			
5			6		58	5902011.001	Screw DIN912-M3x20	10	-	-	-	-			
6	3				14	5902021.001	Screw DIN7991-M3x6	10	-	-	-	-			
7			6		63	5902143.001	Screw DIN7991-M4x16	10	-	-	-	-			
8	3				17	5902167.001	Screw DIN912-M5x50	10	-	-	-	-			
9	3				6	5902241.001	Screw DIN7984-M4x10	10	-	-	-	-			
10			6		76	5902358.001	Screw DIN7984-M4x6	10	-	-	-	-			
11		4			42	5902420.001	Screw DIN7984-M4x20	10	-	-	-	-			
12	3	4		7	1	5902489.001	Screw DIN7984-M4x8	10	-	-	-	-			
13			6		65	5902562.001	Screw DIN7984 M4x14	10	-	-	-	-			
14			5		51	5902571.001	Screw DIN7984-M4x6	10	-	-	-	-			
15	3				16	5902837.001	Screw DIN7984-M4x8	10	-	-	-	-			
16		4			38	5902862.001	Screw DIN7984-M4x20	10	-	-	-	-			
17		4			23	5902863.001	Screw DIN7984-M4x25	10	-	-	-	-			
18	3				7	5903003.001	Washer DIN125-A4.3	10	-	-	-	-			
19				7	87	5903004.001	Washer DIN125-A3.2	10	-	-	-	-			
20	3				18	5903061.001	Lock Washer DIN127-B5	10	-	-	-	-			
21		4			90	5903089.001	Washer DIN988-4x8x1,0	10	-	-	-	-	15637		
22			6		68	5903505.001	E-Ring DIN6799-5	10	-	-	-	-			
23				7	77	5903510.001	E-Ring DIN6799-9	10	-	-	-	-			
24	3				12	5903525.001	E-Ring DIN 6799-4	10	-	-	-	-			
25				7	84	5904528.001	Set Screw DIN913-M3x4	10	-	-	-	-			
26	3				4	5904544.001	Spring	10	-	-	-	-			
27				7	81	5905096.001	Spring	5	-	-	-	-			
28			6		70	5905249.001	One-way Flow Control Valve	1	A	B	C	D			
29			6		72	5905255.001	Push-in L-Connector	1	-	-	-	-			
30		4			39	5905257.001	Silencer	1	A	B	C	D			
31		4			41	5905283.001	Push-in/threaded Fitting	1	-	-	-	-			
32		4			24	5905284.001	Shut-off valve	1	-	-	-	-			
33		4			22	5905285.001	Push-in L-Connector	1	-	-	-	-			
34			6		71	5905470.001	One-way Flow Control Valve	1	-	-	-	-			
35				7	79	5905602.001	Ring Magnet	1	-	-	-	-			
36		4			32	5905972.001	Push-in Y-Fitting	1	-	-	-	-			
37			6		61	5906636.001	One-way Flow Control Valve	1	A	B	C	D			
38			6		62	5906645.001	Cylinder	1	-	-	C	D			
39			6		57	5906646.001	Mounting Clip	1	-	-	-	-			
40		4			25	5906842.001	Push-in/threaded Fitting	1	-	-	-	-			
41		4			37	5906844.001	Vacuum Generator	1	-	-	-	-			
42		4			36	5906914.001	Push-in L-Connector	1	-	-	-	-			
43		4			40	5906915.001	Push-in T-Connector	1	-	-	-	-			
44			5		52	5906943.001	Sealing Ring	10	-	-	-	-			
45			6		73	5907061.001	Sensor Retainer	1	-	-	-	-			
46			6		74	5907066.001	Cover	1	-	-	-	-			
47		4			34	5907428.001	Magnetic Valve	1	-	B	C	D			
48		4			35	5907429.001	Magnetic Valve	1	-	B	C	D			
49			6		59	5917932.001	Guide Rail	1	-	-	-	-			
50				7	78	5941808.001	Bushing	1	-	-	-	-			
51				7	80	5949191.001	Adapter Bolt	1	-	-	-	-			
52			5		55	5955575.001	Applicator Control	1	-	-	C	D			
53			5		49	5955586.001	Cable	1	-	-	C	D			
54	3				8.1	5964036.001	Mounting Plate	1	-	-	-	-	L		

PU Package unit

Note

L Left
R Right
O Option

SPR Recommendation

A - wearing parts and accessories

B - recommended spare parts for quick repair

C - recommended spare parts for distributors

D - recommended spare parts for central stores

6 Spare parts register

9

Pos.	Figure/Page				No.	Part No.	Description	PU	SPR				Notes	Serial No.		
									from	to						
55				6	67	5964061.001	Set Screw	1	-	-	-	-				
56	3				21	5964062.001	Binder	1	-	-	-	-				
57	3				11	5964090.001	Interlock	1	-	-	-	-				
58		4			43.2	5964095.001	Blow Tube 4"	1	-	-	-	-				
59	3				2	5964129.001	Cover	1	-	-	-	-				
60	3				8.2	5964185.001	Mounting Plate	1	-	-	-	-				
61	3				15	5964199.001	Adapter Profile	1	-	-	-	-				
62		4			43.1	5964277.001	Blow Tube 2"	1	-	-	-	-				
63	3				20.2	5964310.001	Clamping Element	1	-	-	-	-	R			
64	3				19.2	5964312.001	Crossbeam	1	-	-	-	-	R			
65	3				20.1	5964328.001	Clamping Element	1	-	-	-	-	L			
66	3				19.1	5964331.001	Crossbeam	1	-	-	-	-	L			
67	3				5	5964367.001	Knurled Screw	1	-	-	-	-				
68	3				13.1	5964429.001	Plate	1	-	-	-	-	L			
69	3				13.2	5964438.001	Plate	1	-	-	-	-	R			
70			5	7	50	5964590.001	Cable	1	-	-	C	D				
71	3				3	5965963.001	Set Screw	1	-	-	-	-				
72		4			26	5966414.001	Pressure Regulator	1	-	-	-	-	O			
73			5		56	5966417.001	Retainer	1	-	-	-	-				
74		4		6	7	27	5966460.001	Tube Ø4	2m	-	B	C	D			
75		4	5			31	5966463.001	Tube Ø4	2m	-	B	C	D			
76		4			7	30	5966464.001	Tube Ø6	2m	-	B	C	D			
77		4				28	5966465.001	Tube Ø8	2m	-	B	C	D			
78		4		6		29	5966466.001	Tube Ø4	2m	-	B	C	D			
79	3				10.1	5966529.001	Hinges	1	-	-	-	-	L			
80	3				9	5966530.001	Eccentric	1	-	-	-	-				
81	3				10.2	5966531.001	Hinges	1	-	-	-	-	R			
82				7	88.1	5966534.001	Tamp Retainer	1	-	-	-	-	L			
83				6	66.1	5966536.001	Adjustment Bracket	1	-	-	-	-	L			
84				6	64	5966538.001	Retainer	1	-	-	-	-				
85			5	6	44	5966556.001	Sensor	1	-	-	C	D				
86			5	6	45	5966557.001	Sensor	1	-	-	C	D				
87			5	6	46	5966558.001	Sensor	1	-	-	C	D				
88			5		7	47	5966559.001	Sensor	1	-	-	C	D			
89			5			54	5966570.001	EEPROM	1	-	-	-	-			
90					7	85	5966918.001	Stopper	1	-	-	-	-			
91					6	69	5966923.001	Swing Drive	1	-	-	-	-			
92					6	60.1	5966924.001	Pivot Arm	1	-	-	-	-	L		
93			5			53.1	5971416.001	PCB Applicator Interfaces	1	-	B	C	D	L		
94			5			53.2	5971417.001	PCB Applicator interfaces	1	-	B	C	D	R		
95					6	75.1	5971533.001	Transport Lock	1	-	-	-	-	L		
96		4				33.1	5976156.001	Valve Block	1	-	-	-	-	L		
97		4				33.2	5976157.001	Valve Block	1	-	-	-	-	R		
98					6	60.2	5979277.001	Pivot Arm	1	-	-	-	-	R		
99					6	75.2	5979281.001	Transport Lock	1	-	-	-	-	R		
100					6	66.2	5979282.001	Adjustment Bracket	1	-	-	-	-	R		
101					7	88.2	5979283.001	Tamp Retainer	1	-	-	-	-	R		

7 Packaging

Pos.	Figure/Page				No.	Part No.	Description	PU	SPR				Notes	Serial No.	
									from	to					
102						9109176.001	Packaging	1	-	-	-	-			

PU Package unit

Note

L Left
R Right
O Option

SPR Recommendation

A - wearing parts and accessories
B - recommended spare parts for quick repair
C - recommended spare parts for distributors
D - recommended spare parts for central stores