

Spare Parts List



Stroke Applicator

4114 / 4116

Family	Type
Stroke Applicator	4114L-200
	4114L-300
	4114L-400
	4114R-200
	4114R-300
	4114R-400
	4116L-200
	4116L-300
	4116L-400
	4116R-200
	4116R-300
	4116R-400
	401...-200 Pressure reduced
	401...-300 Pressure reduced

Table of Contents

1 Retainer Assembly 3
 2 Pneumatics Retainer Assembly 4
 3 Electronics Retainer Assembly 5
 4 Guiding 6
 5 Cylinder Assembly Guiding Y 7
 6 Cylinder Assembly Z 8
 7 Pressure Reduced 9
 8 Spare parts register 10
 9 Packaging / Accessories 12

Edition: 01/2023 - Part.-No. 9009124

Copyright

This documentation as well as translation hereof are property of cab Produkttechnik GmbH & Co. KG.

The replication, conversion, duplication or divulgement of the whole manual or parts of it for other intentions than its original intended purpose demand the previous written authorization by cab.

Editor

Regarding questions or comments please contact cab Produkttechnik GmbH & Co. KG.

Topicality

Due to the constant further development of our products discrepancies between documentation and product can occur. Please check www.cab.de for the latest update.

Terms and conditions

Deliveries and performances are effected under the General conditions of sale of cab.

Germany
cab Produkttechnik GmbH & Co KG
 Karlsruhe
 Phone +49 721 6626 0
www.cab.de

USA
cab Technology, Inc.
 Chelmsford, MA
 Phone +1 978 250 8321
www.cab.de/us

Taiwan
cab Technology Co., Ltd.
 Taipei
 Phone +886 (02) 8227 3966
www.cab.de/tw

Singapore
cab Singapore Pte. Ltd.
 Singapore
 Phone +65 6931 9099
www.cab.de/en

France
cab Technologies S.à.r.l.
 Niedermodern
 Phone +33 388 722501
www.cab.de/fr

Mexico
cab Technology, Inc.
 Juárez
 Phone +52 656 682 4301
www.cab.de/es

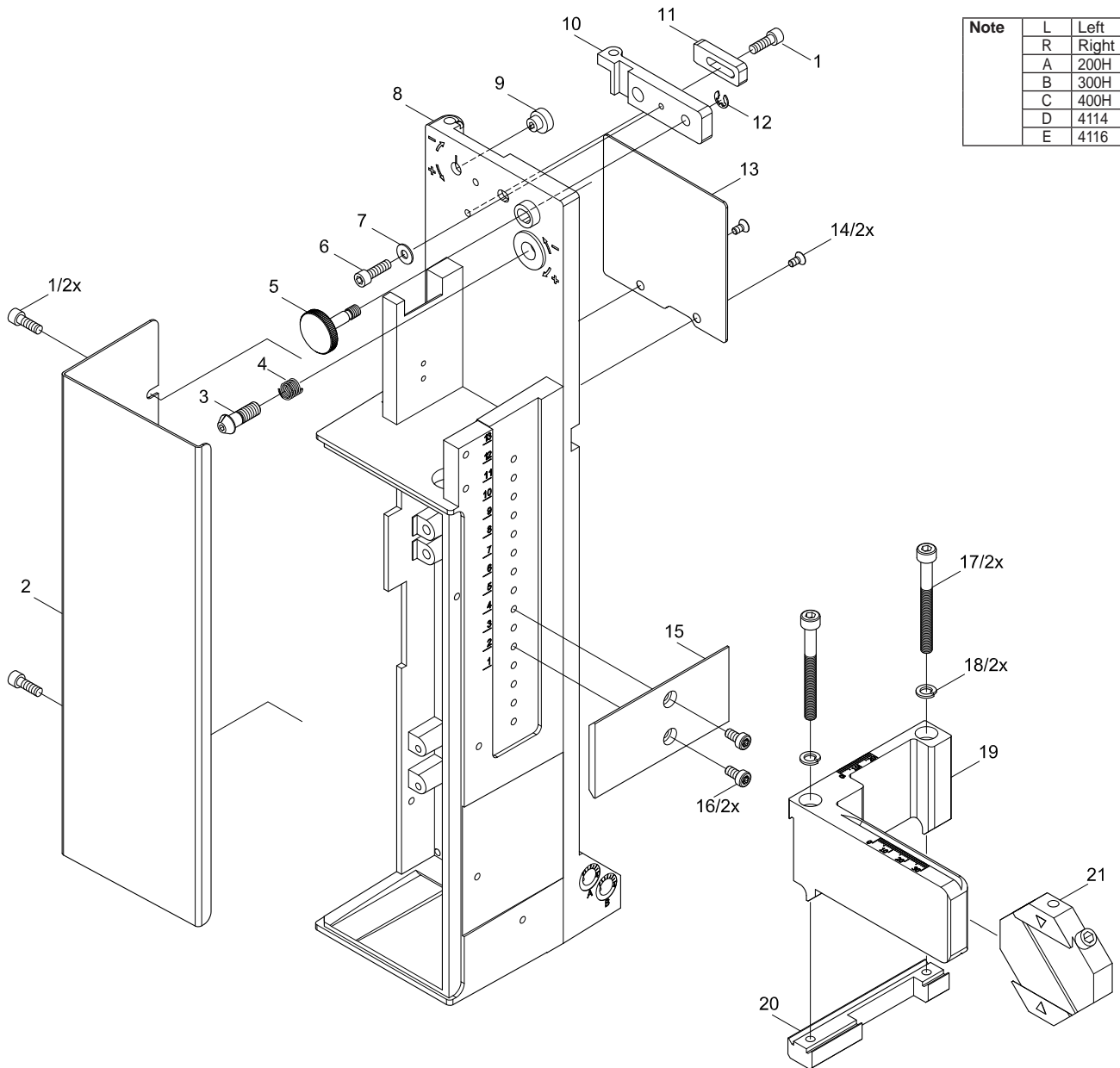
China
cab (Shanghai) Trading Co., Ltd.
 Shanghai
 Phone +86 (021) 6236 3161
www.cab.de/cn

South Africa
cab Technology (Pty) Ltd.
 Randburg
 Phone +27 11 886 3580
www.cab.de/za

No.	Part-No.	Description	PU	Note	Serial No.	
					from	to
1	5902489.001	Screw DIN7984-M4x8	10			
2	5964129.001	Cover	1			
3	5965963.001	Set Screw	1			
4	5904544.001	Spring	10			
5	5964367.001	Knurled Screw	1			
6	5902241.001	Screw DIN7984-M4x10	10			
7	5903003.001	Washer DIN125-A4.3	10			
8.1	5964036.001	Mounting Plate	1	L		
8.2	5964185.001	Mounting Plate	1	R		
9	5966530.001	Eccentric	1			
10.1	5966529.001	Hinges	1	L		
10.2	5966531.001	Hinges	1	R		
11	5964090.001	Interlock	1			
12	5903525.001	E-Ring DIN 6799-4	10			
13.1	5964429.001	Plate	1	L		

No.	Part-No.	Description	PU	Note	Serial No.	
					from	to
13.2	5964438.001	Plate	1	R		
14	5902021.001	Screw DIN7991-M3x6	10			
15.1	5964318.001	Adapter Profile	1	A/B/D		
15.2	5970013.001	Adapter Profile	1	L C/D E		
15.3	5970014.001	Adapter Profile	1	R C/D E		
16	5902837.001	Screw DIN7984-M4x8	10			
17	5902167.001	Screw DIN912-M5x50	10			
18	5903061.001	Lock Washer DIN127-B5	10			
19.1	5964312.001	Crossbeam	1	L/D		
19.2	5964331.001	Crossbeam	1	R/D		
19.3	5964332.001	Crossbeam	1	L/E		
19.4	5964333.001	Crossbeam	1	R/E		
20.1	5964310.001	Clamping Element	1	L		
20.2	5964328.001	Clamping Element	1	R		
21	5964062.001	Binder	1			

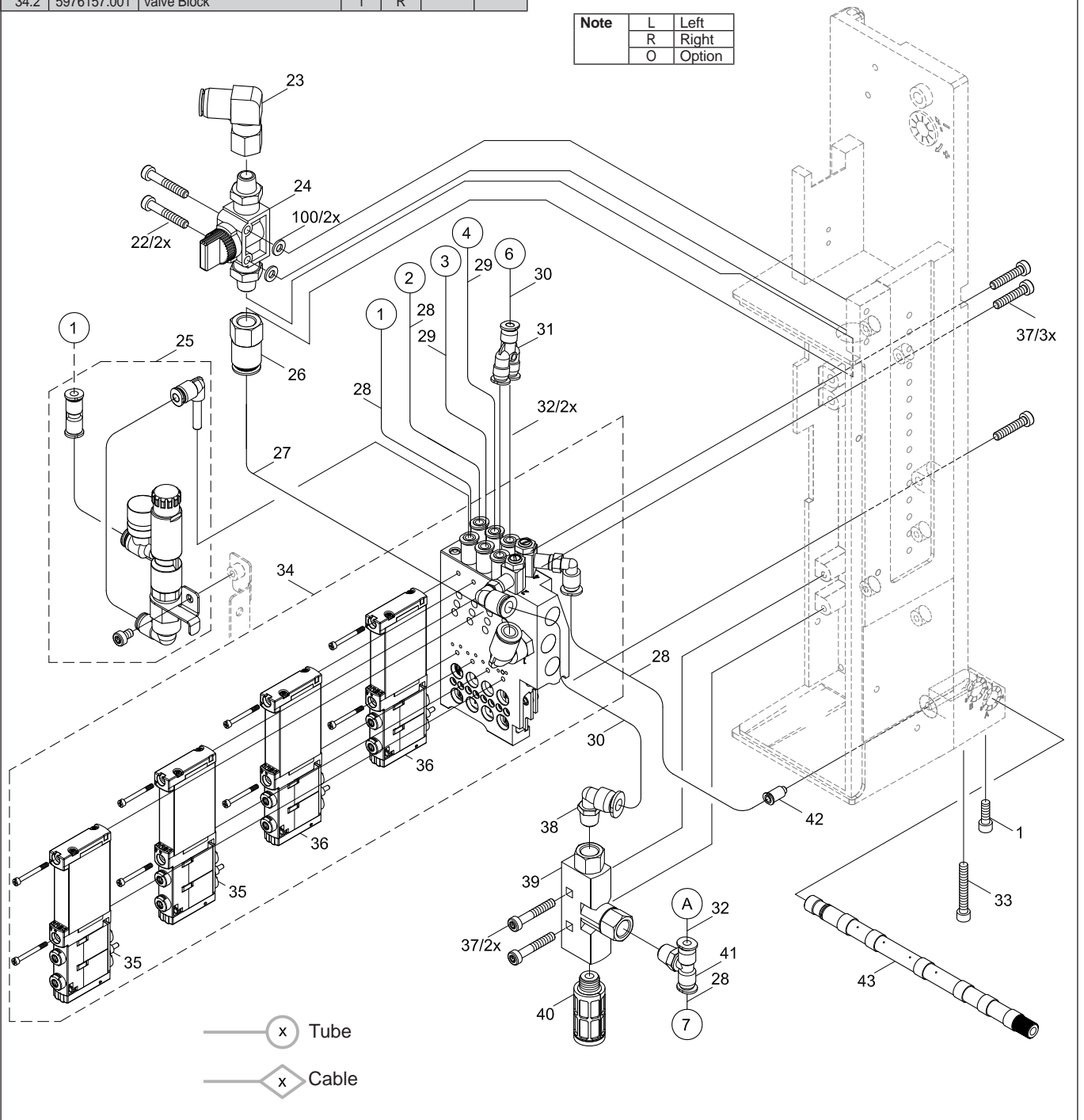
Note	L	Left
	R	Right
	A	200H
	B	300H
	C	400H
	D	4114
	E	4116



No.	Part-No.	Description	PU	Note	Serial No.	
					from	to
1	5902489.001	Screw DIN7984-M4x8	10			
22	5902863.001	Screw DIN7984-M4x25	10			
23	5905285.001	Push-in L-Connector	1			
24	5905284.001	Shut-off valve	1			
25	5966414.001	Pressure Regulator	1	O		
26	5906842.001	Push-in/threaded Fitting	1			
27	5966465.001	Tube Ø8	2m			
28	5966460.001	Tube Ø4	2m			
29	5966466.001	Tube Ø4	2m			
30	5966464.001	Tube Ø6	2m			
31	5905972.001	Push-in Y-Fitting	1			
32	5966463.001	Tube Ø4	2m			
33	5902420.001	Screw DIN7984-M4x20	10			
34.1	5976156.001	Valve Block	1	L		
34.2	5976157.001	Valve Block	1	R		

No.	Part-No.	Description	PU	Note	Serial No.	
					from	to
35	5907428.001	Magnetic Valve	1			
36	5907429.001	Magnetic Valve	1			
37	5902862.001	Screw DIN7984-M4x20	10			
38	5906914.001	Push-in L-Connector	1			
39	5906844.001	Vacuum Generator	1			
40	5905257.001	Silencer	1			
41	5906915.001	Push-in T-Connector	1			
42	5905283.001	Push-in/threaded Fitting	1			
43.1	5964277.001	Blow Tube 2"	1			
43.2	5964095.001	Blow Tube 4"	1			
43.3	5964614.001	Blow Tube 6"	1			
100	5903089.001	Washer DIN988-4x8x1,0	10		15637	

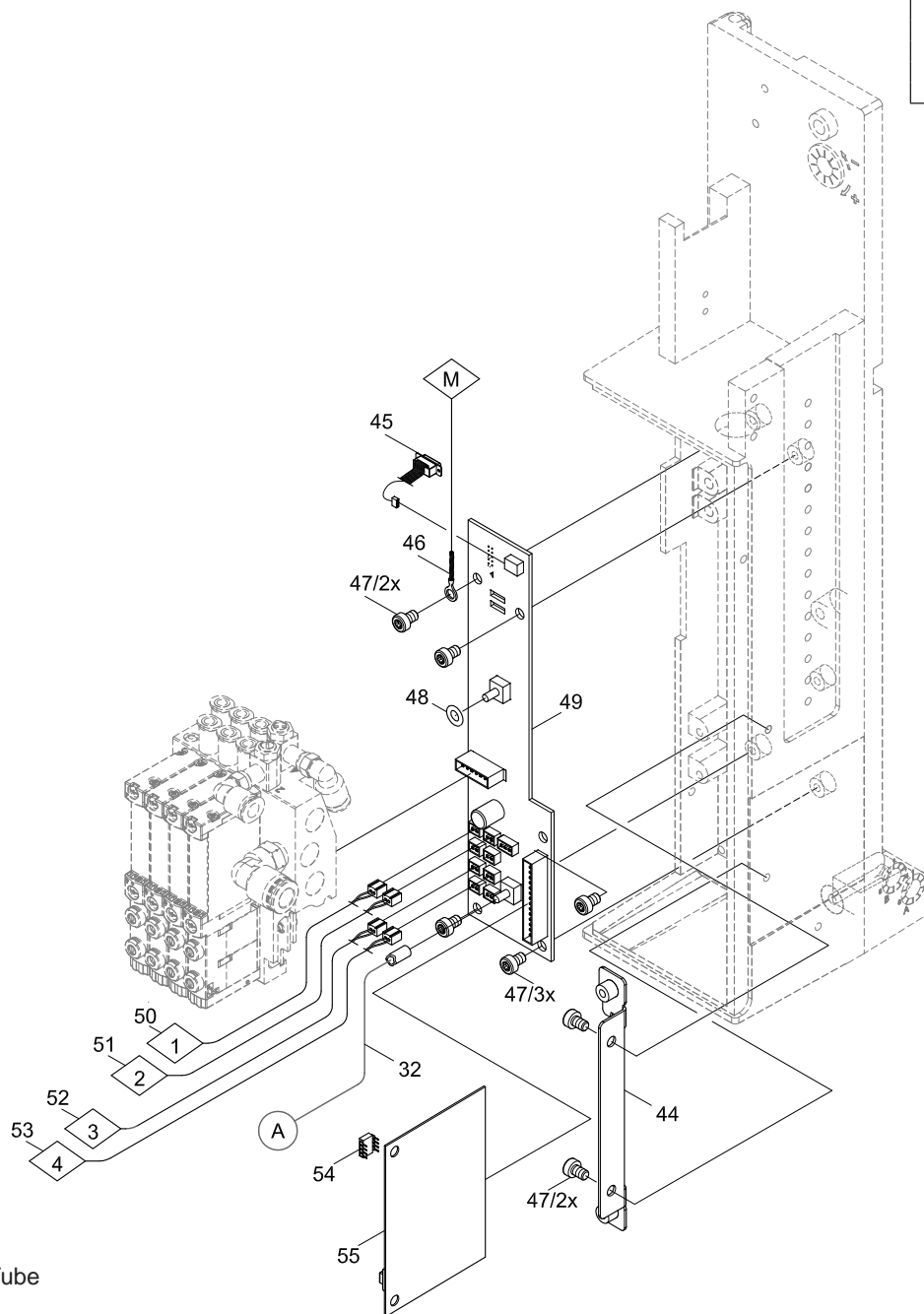
Note	
L	Left
R	Right
O	Option



No.	Part-No.	Description	PU	Note	Serial No.	
					from	to
32	5966463.001	Tube Ø4	2m			
44	5966417.001	Retainer	1			
45	5955586.001	Cable	1			
46.1	5964590.001	Cable	1	A		
46.2	5964591.001	Cable	1	B		
46.3	5964592.001	Cable	1	C		
47	5902571.001	Screw DIN7984-M4x6	10			
48	5906943.001	Sealing Ring	10			
49.1	5971416.001	PCB Applicator Interfaces	1	L		
49.2	5971417.001	PCB Applicator interfaces	1	R		
50.1	5964454.001	Sensor	1	A		
50.2	5964494.001	Sensor	1	B		
50.3	5964495.001	Sensor	1	C		
51.1	5964490.001	Sensor	1	A		

No.	Part-No.	Description	PU	Note	Serial No.	
					from	to
51.2	5964594.001	Sensor	1	B		
51.3	5964595.001	Sensor	1	C		
52.1	5971186.001	Sensor	1	A		
52.2	5971187.001	Sensor	1	B		
52.3	5971188.001	Sensor	1	C		
53.1	5971189.001	Sensor	1	A		
53.2	5971193.001	Sensor	1	B		
53.3	5971194.001	Sensor	1	C		
54	5964096.001	EEPROM	1			
55	5955575.001	Applicator Control	1			

Note	L	Left
		R
	A	200H
	B	300H
	C	400H
	D	4114
	E	4116

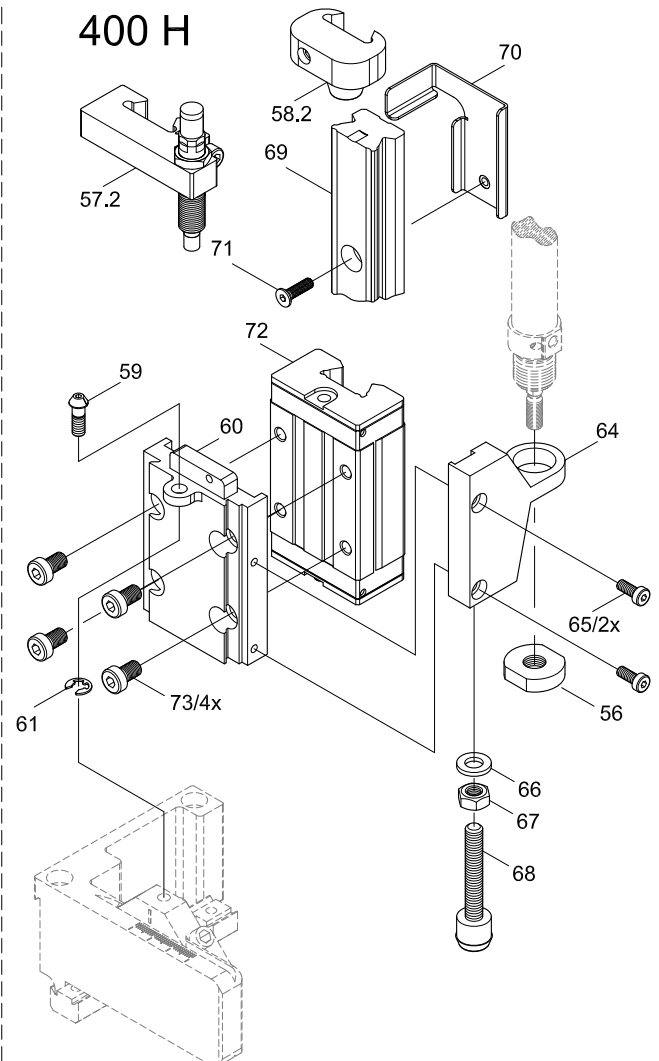
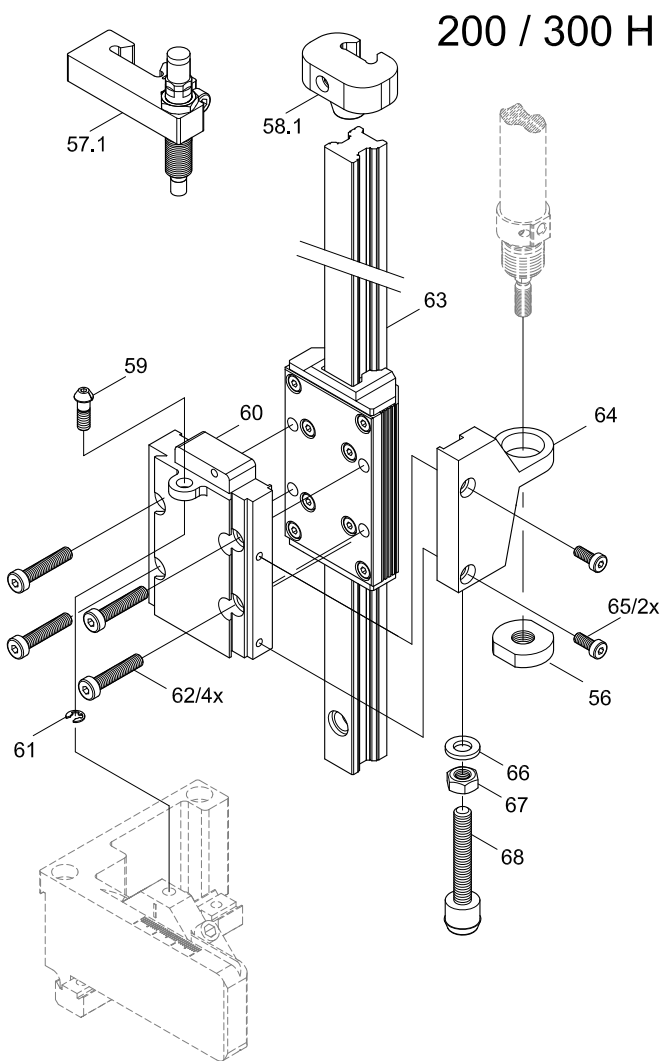


x Tube
x Cable

No.	Part-No.	Description	PU	Note	Serial No.	
					from	to
56	5521159.001	Nut	1			
57.1	5979483.001	Stopper	1	A/B/O		
57.2	5964343.001	Stopper	1	C/O		
58.1	5979353.001	Stopper	1	A/B		
58.2	5964364.001	Stopper	1	C		
59	5964061.001	Set Screw	1			
60.1	5979349.001	Plate	1	L/A/B		
60.2	5979417.001	Plate	1	R/A/B		
60.3	5964302.001	Plate	1	L/C		
60.4	5964337.001	Plate	1	R/C		
61	5903505.001	E-Ring DIN6799-5	10			
62	5902827.001	Screw DIN7984-M5x25	10	A/B		
63.1	5979331.001	Guide Rail with Carriage	1	A		

No.	Part-No.	Description	PU	Note	Serial No.	
					from	to
63.2	5979342.001	Guide Rail with Carriage	1	B		
64.1	5964301.001	Holder	1	L		
64.2	5964336.001	Holder	1	R		
65	5902562.001	Screw DIN7984-M4x14	10			
66	5903040.001	Washer DIN125-A6,4	10			
67	5902504.001	Nut DIN934-M6	10			
68	5964349.001	Stopper	1			
69	5979307.001	Guide Rail	1	C		
70.1	5966524.001	Bracket	1	L/C		
70.2	5966528.001	Bracket	1	R/C		
71	5902291.001	Screw DIN7991-M4x20	10			
72	5965966.001	Sliding Carriage	1	C		
73	5902375.001	Screw DIN7984-M6x10	10	C		

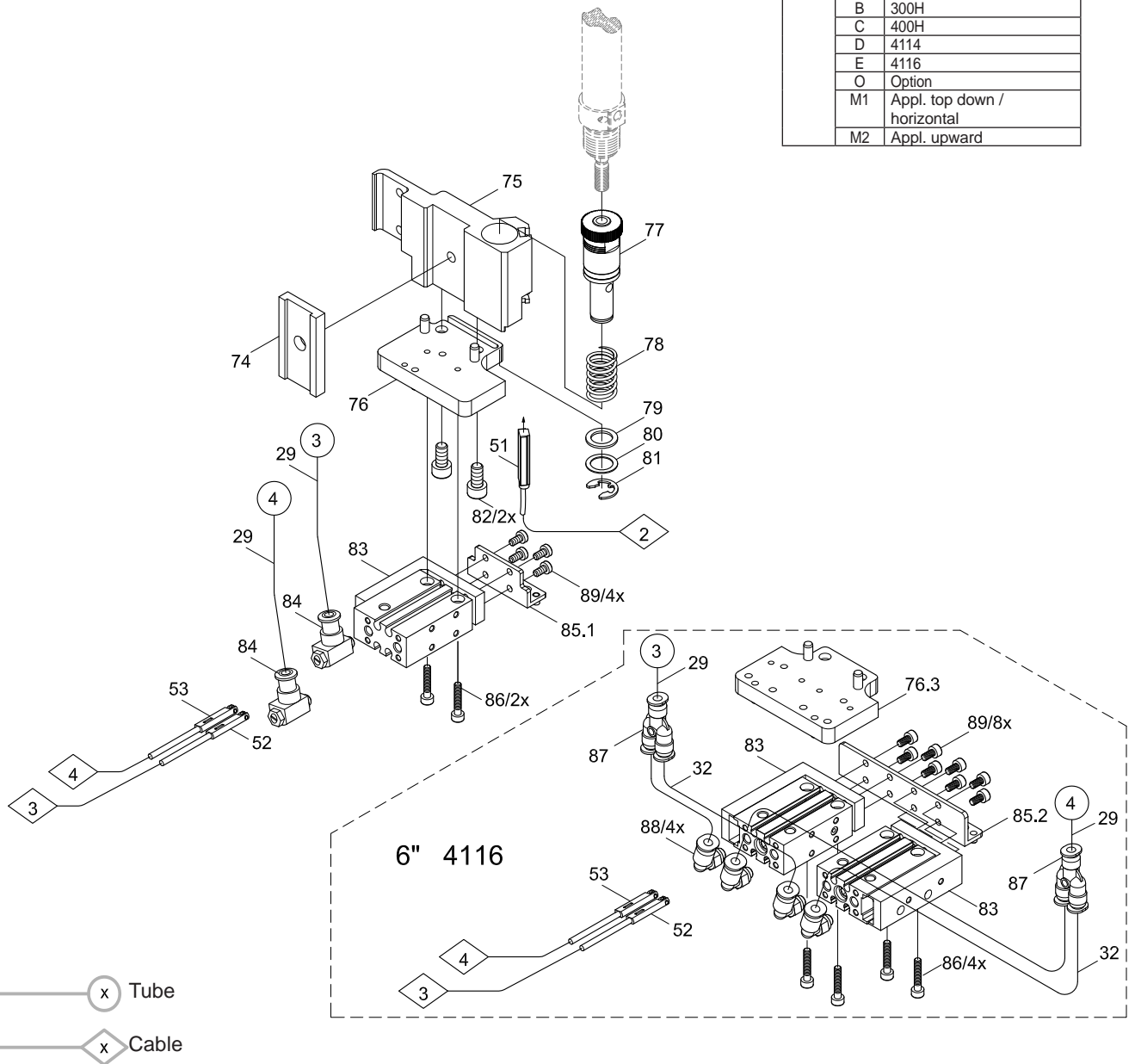
Note	L	Left
	R	Right
	A	200H
	B	300H
	C	400H
	D	4114
	E	4116
	O	Option



No.	Part-No.	Description	PU	Note	Serial No.	
					from	to
29	5966466.001	Tube Ø4	2m			
32	5966463.001	Tube Ø4	2m			
51.1	5964490.001	Sensor	1	A		
51.2	5964594.001	Sensor	1	B		
51.3	5964595.001	Sensor	1	C		
52.1	5971186.001	Sensor	1	A		
52.2	5971187.001	Sensor	1	B		
52.3	5971188.001	Sensor	1	C		
53.1	5971189.001	Sensor	1	A		
53.2	5971193.001	Sensor	1	B		
53.3	5971194.001	Sensor	1	C		
74	5979327.001	Adapter Rail	1			
75.1	5964236.001	Tamp Retainer	1	L		
75.2	5964241.001	Tamp Retainer	1	R		
76.1	5964246.001	Plate	1	L/D		
76.2	5964247.001	Plate	1	R/D		
76.3	5971163.001	Plate	1	E		

No.	Part-No.	Description	PU	Note	Serial No.	
					from	to
77	5955707.001	Adapter Bolt	1			
78.1	5905069.001	Spring	1	M1		
78.2	5905049.001	Spring	1	M2		
79	5521157.001	Washer	1			
80	5521158.001	Washer	1			
81	5903501.001	E-Ring DIN6799-7	10			
82	5902138.001	Screw DIN912-M5x10	10			
83	5906690.001	Mini Slide Cylinder	1			
84	5906636.001	One-way Flow Control Valve	1			
85.1	5964456.001	Adapter	1	D		
85.2	5974610.001	Adapter	1	E		
86	5902018.001	Screw DIN912-M3x16	10			
87	5905371.001	Push-in Y-Fitting	1	E		
88	5905255.001	Push-in L-Connector	1			
89	5902838.001	Screw DIN7984 M3x6	10			

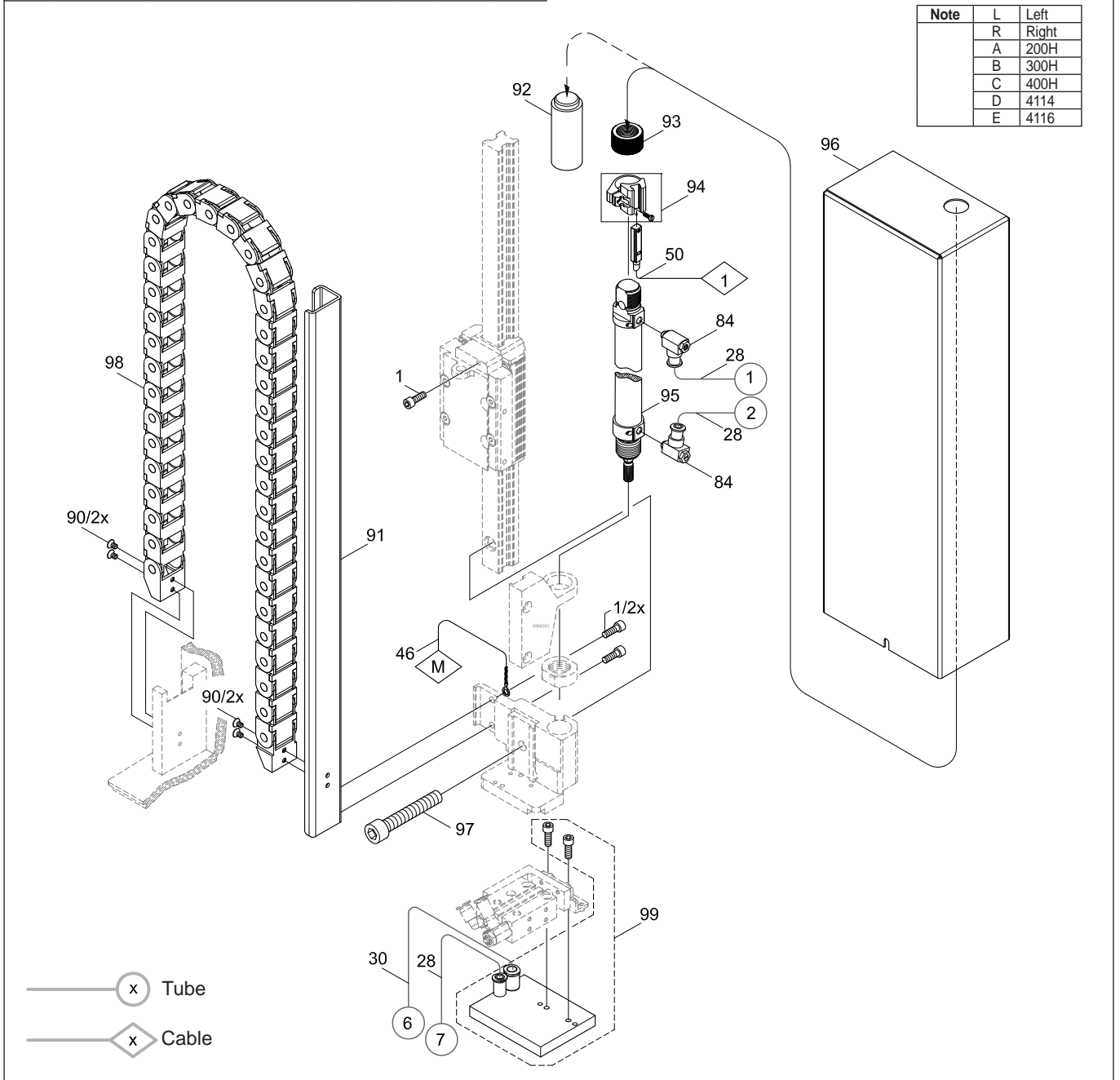
Note	L	Left
	R	Right
	A	200H
	B	300H
	C	400H
	D	4114
	E	4116
	O	Option
	M1	Appl. top down / horizontal
	M2	Appl. upward



No.	Part-No.	Description	PU	Note	Serial No.	
					from	to
1	5902489.001	Screw DIN7984-M4x8	10			
28	5966460.001	Tube Ø4	2m			
30	5966464.001	Tube Ø6	2m			
46.1	5964590.001	Cable	1	A		
46.2	5964591.001	Cable	1	B		
46.3	5964592.001	Cable	1	C		
50.1	5964454.001	Sensor	1	A		
50.2	5964494.001	Sensor	1	B		
50.3	5964495.001	Sensor	1	C		
84	5906636.001	One-way Flow Control Valve	1			
90	5902047.001	Screw DIN7991-M3x5	10			
91.1	5964347.001	Bracket	1	L/A		
91.2	5964396.001	Bracket	1	R/A		
91.3	5964357.001	Bracket	1	L/B		
91.4	5964398.001	Bracket	1	R/B		
91.5	5964358.001	Bracket	1	L/C		
91.6	5964402.001	Bracket	1	R/C		
92	5964443.001	Bolt	1	A		

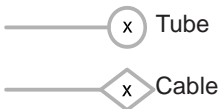
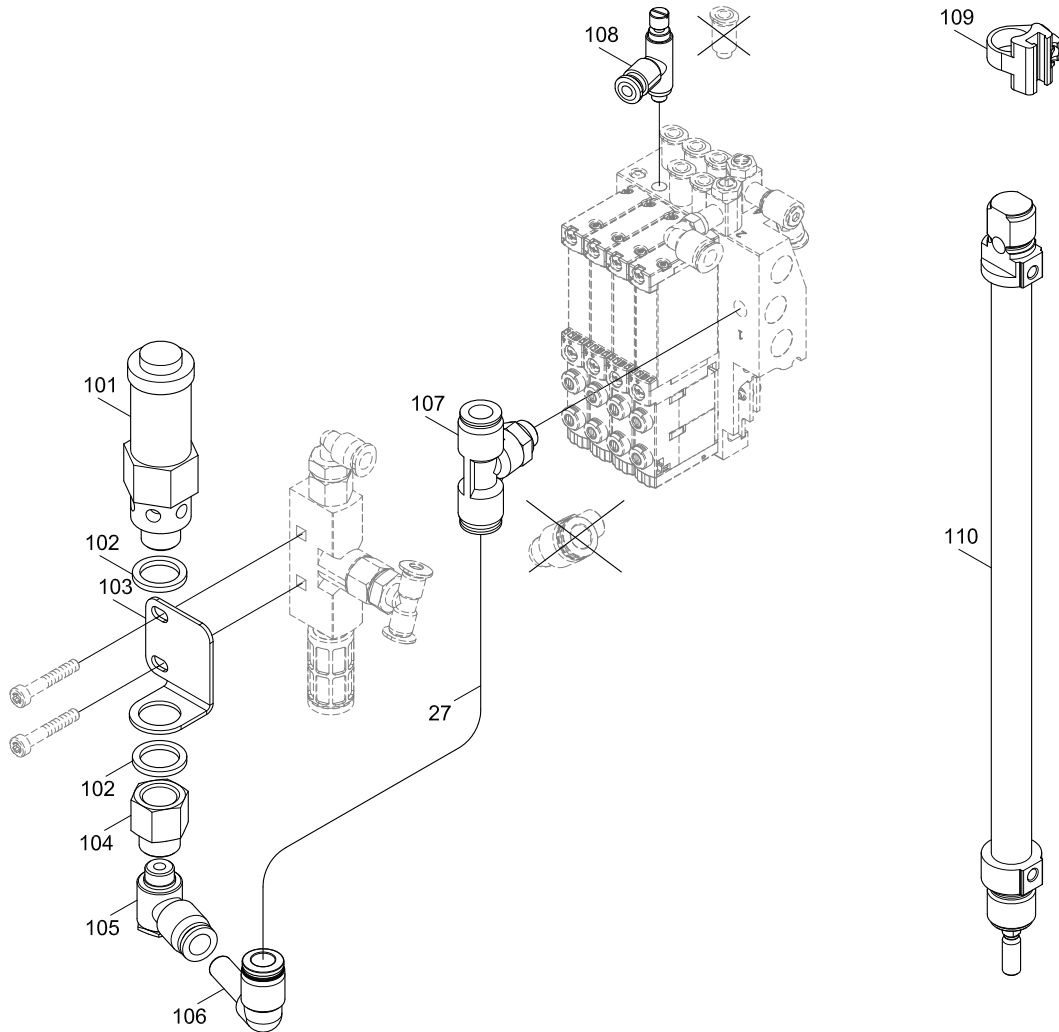
No.	Part-No.	Description	PU	Note	Serial No.	
					from	to
93	5964489.001	Knurled Nut	1	B/C		
94	5905593.001	Mounting Clip	1			
95.1	5906938.001	Cylinder	1	A		
95.2	5905973.001	Cylinder	1	B		
95.3	5906117.001	Cylinder	1	C		
96.1	5964440.001	Cover	1	L/A		
96.2	5964451.001	Cover	1	R/A		
96.3	5964483.001	Cover	1	L/B		
96.4	5964453.001	Cover	1	R/B		
96.5	5964484.001	Cover	1	L/C		
96.6	5964485.001	Cover	1	R/C		
97.1	5902895.001	Screw DIN7984-M 6x30	10	A/B		
97.2	5909043.001	Screw DIN7984-M6x20	10	C		
98.1	5964373.001	Energy Track	1	A		
98.2	5964374.001	Energy Track	1	B		
98.3	5964375.001	Energy Track	1	C		
99		Tamp				

Note	L	Left
	R	Right
	A	200H
	B	300H
	C	400H
	D	4114
	E	4116



No.	Part-No.	Description	PU	Note	Serial No.	
					from	to
27	5966465.001	Tube Ø8	2m			
101	5907526.001	Safety Valve	1	F		
102	5905130.001	Sealing Ring O-1/4-200	10	F		
103.1	5979137.001	Mount Safety Valve	1	L/F		
103.2	5979241.001	Mount Safety Valve	1	R/F		
104	5906887.001	Reducing Coupling	1	F		
105	5906913.001	Push-in L-Connector	1	F		
106	5907313.001	Push-in L-Connector	1	F		
107	5905316.001	Push-in T-Connector	1	F		
108	5979239.001	One-way Flow Control Valve	1	F		
109	5907074.001	Mounting Clip	1	F		
110.1	5907889.001	Cylinder	1	A/F		
110.2	5907890.001	Cylinder	1	B/F		

Note	L	401x L
	R	401x R
	A	200
	B	300
	F	Pressure reduced



Pos	Figure/Page				No.	Part No.	Description	PU	SPR				Notes	Serial No.	
									from	to					
1				7	79	5521157.001	Washer	1	-	-	-	-			
2				7	80	5521158.001	Washer	1	-	-	-	-			
3			6		56	5521159.001	Nut	1	-	-	-	-			
4				7	86	5902018.001	Screw DIN912-M3x16	10	-	-	-	-			
5	3				14	5902021.001	Screw DIN7991-M3x6	10	-	-	-	-			
6				8	90	5902047.001	Screw DIN7991-M3x5	10	-	-	-	-			
7				7	82	5902138.001	Screw DIN912-M5x10	10	-	-	-	-			
8	3				17	5902167.001	Screw DIN912-M5x50	10	-	-	-	-			
9	3				6	5902241.001	Screw DIN7984-M4x10	10	-	-	-	-			
10			6		71	5902291.001	Screw DIN7991-M4x20	10	-	-	-	-			
11			6		73	5902375.001	Screw DIN7984-M6x10	10	-	-	-	-	C		
12		4			33	5902420.001	Screw DIN7984-M4x20	10	-	-	-	-			
13	3	4		8	1	5902489.001	Screw DIN7984-M4x8	10	-	-	-	-			
14			6		67	5902504.001	Nut DIN934-M6	10	-	-	-	-			
15			6		65	5902562.001	Screw DIN7984 M4x14	10	-	-	-	-			
16		5			47	5902571.001	Screw DIN7984-M4x6	10	-	-	-	-			
17			6		62	5902827.001	Screw DIN7984-M5x25	10	-	-	-	-	A/B		
18	3				16	5902837.001	Screw DIN7984-M4x8	10	-	-	-	-			
19				7	89	5902838.001	Screw DIN7984 M3x6	10	-	-	-	-			
20		4			37	5902862.001	Screw DIN7984-M4x20	10	-	-	-	-			
21		4			22	5902863.001	Screw DIN7984-M4x25	10	-	-	-	-			
22				8	97.1	5902895.001	Screw DIN7984-M 6x30	10	-	-	-	-	A/B		
23	3				7	5903003.001	Washer DIN125-A4.3	10	-	-	-	-			
24			6		66	5903040.001	Washer DIN125-A6,4	10	-	-	-	-			
25	3				18	5903061.001	Lock Washer DIN127-B5	10	-	-	-	-			
26		4			100	5903089.001	Washer DIN988-4x8x1,0	10	-	-	-	-			
27				7	81	5903501.001	E-Ring DIN6799-7	10	-	-	-	-			
28			6		61	5903505.001	E-Ring DIN6799-5	10	-	-	-	-			
29	3				12	5903525.001	E-Ring DIN 6799-4	10	-	-	-	-			
30	3				4	5904544.001	Spring	10	-	-	C	D			
31				7	78.2	5905049.001	Spring	1	-	-	C	D	M2		
32				7	78.1	5905069.001	Spring	1	-	-	C	D	M1		
33				9	102	5905130.001	Sealing Ring O-1/4-200	10	-	B	C	D	A/B/F		
34				7	88	5905255.001	Push-in L-Connector	1	-	-	-	-			
35	4				40	5905257.001	Silencer	1	A	B	C	D			
36	4				42	5905283.001	Push-in/threaded Fitting	1	-	-	-	-			
37	4				24	5905284.001	Shut-off valve	1	-	-	-	-			
38	4				23	5905285.001	Push-in L-Connector	1	-	-	-	-			
39				9	107	5905316.001	Push-in T-Connector	1	-	-	-	-	A/B/F		
40				7	87	5905371.001	Push-in Y-Fitting	1	-	-	-	-	E		
41				8	94	5905593.001	Mounting Clip	1	-	-	-	-			
42	4				31	5905972.001	Push-in Y-Fitting	1	-	-	-	-			
43				8	95.2	5905973.001	Cylinder	1	-	-	C	D	B		
44				8	95.3	5906117.001	Cylinder	1	-	-	C	D	C		
45				7 8	84	5906636.001	One-way Flow Control Valve	1	A	B	C	D			
46				7	83	5906690.001	Mini Slide Cylinder	1	-	-	-	-			
47	4				26	5906842.001	Push-in/threaded Fitting	1	-	-	-	-			
48	4				39	5906844.001	Vacuum Generator	1	-	-	-	-			
49				9	104	5906887.001	Reducing Coupling	1	-	-	-	-	A/B/F		
50				9	113	5906913.001	Push-in L-Connector	1	-	-	-	-	A/B/F		
51	4				38	5906914.001	Push-in L-Connector	1	-	-	-	-			
52	4				41	5906915.001	Push-in T-Connector	1	-	-	-	-			
53				8	95.1	5906938.001	Cylinder	1	-	-	C	D	A		
54		5			48	5906943.001	Sealing Ring	10	-	-	-	-			
55				9	109	5907074.001	Mounting Clip	1	-	-	-	-	A/B/F		
56				9	105	5907313.001	Push-in L-Connector	1	-	-	-	-	A/B/F		
57	4				35	5907428.001	Magnetic Valve	1	-	B	C	D			

PU Package unit

Note

L Left
R Right
A 200
B 300
C 400
D 4114
E 4116

F Druckreduziert
M1 Appl. nach unten / horizontal
M2 Appl. nach oben
O Option

SPR Recommendation

A - wearing parts and accessories
B - recommended spare parts for quick repair
C - recommended spare parts for distributors
D - recommended spare parts for central stores

Pos	Figure/Page					No.	Part No.	Description	PU	SPR					Notes	Serial No.	
58		4				36	5907429.001	Magnetic Valve	1	-	B	C	D				
59					9	101	5907526.001	Safety Valve	1	-	-	-	-	A/B/F			
60					9	110.1	5907889.001	Cylinder	1	-	-	-	-	A/F			
61					9	110.2	5907890.001	Cylinder	1	-	-	-	-	B/F			
62					8	97.2	5909043.001	Screw DIN7984-M6x20	10	-	-	-	-	C			
63		5				55	5955575.001	Applicator Control	1	-	-	C	D				
64		5				45	5955586.001	Cable	1	-	-	C	D				
65				7		77	5955707.001	Adapter Bolt	1	-	-	-	-				
66	3					8.1	5964036.001	Mounting Plate	1	-	-	-	-	L			
67			6			59	5964061.001	Set Screw	1	-	-	-	-				
68	3					21	5964062.001	Binder	1	-	-	-	-				
69	3					11	5964090.001	Interlock	1	-	-	-	-				
70		4				43.2	5964095.001	Blow Tube 4"	1	-	-	-	-				
71		5				54	5964096.001	EEPROM	1	-	-	-	-				
72	3					2	5964129.001	Cover	1	-	-	-	-				
73	3					8.2	5964185.001	Mounting Plate	1	-	-	-	-	R			
74				7		75.1	5964236.001	Tamp Retainer	1	-	-	-	-	L			
75				7		75.2	5964241.001	Tamp Retainer	1	-	-	-	-	R			
76				7		76.1	5964246.001	Plate	1	-	-	-	-	L/D			
77				7		76.2	5964247.001	Plate	1	-	-	-	-	R/D			
78		4				43.1	5964277.001	Blow Tube 2"	1	-	-	-	-				
79			6			64.1	5964301.001	Holder	1	-	-	-	-	L			
80			6			60.3	5964302.001	Plate	1	-	-	-	-	L/C			
81	3					20.1	5964310.001	Clamping Element	1	-	-	-	-	L			
82	3					19.1	5964312.001	Crossbeam	1	-	-	-	-	L/D			
83	3					15.1	5964318.001	Adapter Profile	1	-	-	-	-	A/B/D			
84	3					20.2	5964328.001	Clamping Element	1	-	-	-	-	R			
85	3					19.2	5964331.001	Crossbeam	1	-	-	-	-	R/D			
86	3					19.3	5964332.001	Crossbeam	1	-	-	-	-	L/E			
87	3					19.4	5964333.001	Crossbeam	1	-	-	-	-	R/E			
88			6			64.2	5964336.001	Holder	1	-	-	-	-	R			
89			6			60.4	5964337.001	Plate	1	-	-	-	-	R/C			
90			6			57.2	5964343.001	Stopper	1	-	-	-	-	C/O			
91				8		91.1	5964347.001	Bracket	1	-	-	-	-	L/A			
92			6			68	5964349.001	Stopper	1	-	-	-	-				
93				8		91.3	5964357.001	Bracket	1	-	-	-	-	L/B			
94				8		91.5	5964358.001	Bracket	1	-	-	-	-	L/C			
95			6			58.2	5964364.001	Stopper	1	-	-	-	-	C			
96	3					5	5964367.001	Knurled Screw	1	-	-	-	-				
97				8		98.1	5964373.001	Energy Track	1	-	-	-	-	A			
98				8		98.2	5964374.001	Energy Track	1	-	-	-	-	B			
99				8		98.3	5964375.001	Energy Track	1	-	-	-	-	C			
100				8		91.2	5964396.001	Bracket	1	-	-	-	-	R/A			
101				8		91.4	5964398.001	Bracket	1	-	-	-	-	R/B			
102				8		91.6	5964402.001	Bracket	1	-	-	-	-	R/C			
103	3					13.1	5964429.001	Plate	1	-	-	-	-	L			
104	3					13.2	5964438.001	Plate	1	-	-	-	-	R			
105				8		96.1	5964440.001	Cover	1	-	-	-	-	L/A			
106				8		92	5964443.001	Bolt	1	-	-	-	-	A			
107				8		96.2	5964451.001	Cover	1	-	-	-	-	R/A			
108				8		96.4	5964453.001	Cover	1	-	-	-	-	R/B			
109		5		8		50.1	5964454.001	Sensor	1	-	-	-	-	A			
110				7		85.1	5964456.001	Adapter	1	-	-	-	-	D			
111				8		96.3	5964483.001	Cover	1	-	-	-	-	L/B			
112				8		96.5	5964484.001	Cover	1	-	-	-	-	L/C			
113				8		96.6	5964485.001	Cover	1	-	-	-	-	R/C			
114				8		93	5964489.001	Knurled Nut	1	-	-	-	-	B/C			

PU Package unit

Note

L Left
R Right
A 200
B 300
C 400
D 4114
E 4116

F Druckreduziert
M1 Appl. nach unten / horizontal
M2 Appl. nach oben
O Option

SPR Recommendation

A - wearing parts and accessories
B - recommended spare parts for quick repair
C - recommended spare parts for distributors
D - recommended spare parts for central stores

Pos	Figure/Page					No.	Part No.	Description	PU	SPR					Notes	Serial No.	
115			5		7		51.1	5964490.001	Sensor	1	-	-	C	D	A		
116			5		8		50.2	5964494.001	Sensor	1	-	-	C	D	B		
117			5		8		50.3	5964495.001	Sensor	1	-	-	C	D	C		
118			5		8		46.1	5964590.001	Cable	1	-	-	C	D	A		
119			5		8		46.2	5964591.001	Cable	1	-	-	C	D	B		
120			5		8		46.3	5964592.001	Cable	1	-	-	C	D	C		
121			5		7		51.2	5964594.001	Sensor	1	-	-	C	D	B		
122			5		7		51.3	5964595.001	Sensor	1	-	-	C	D	C		
123		4					43.3	5964614.001	Blow Tube 6"	1	-	-	-	-			
124	3						3	5965963.001	Set Screw	1	-	-	-	-			
125				6			72	5965966.001	Sliding Carriage	1	-	-	-	-	C		
126		4					25	5966414.001	Pressure Regulator	1	-	-	-	-	O		
127			5				44	5966417.001	Retainer	1	-	-	-	-			
128		4				8	28	5966460.001	Tube Ø4	2m	-	B	C	D			
129		4	5				32	5966463.001	Tube Ø4	2m	-	B	C	D			
130		4				8	30	5966464.001	Tube Ø6	2m	-	B	C	D			
131		4				9	27	5966465.001	Tube Ø8	2m	-	B	C	D			
132		4	5		7		29	5966466.001	Tube Ø4	2m	-	B	C	D			
133				6			70.1	5966524.001	Bracket	1	-	-	-	-	L/C		
134				6			70.2	5966528.001	Bracket	1	-	-	-	-	R/C		
135	3						10.1	5966529.001	Hinges	1	-	-	-	-	L		
136	3						9	5966530.001	Eccentric	1	-	-	-	-			
137	3						10.2	5966531.001	Hinges	1	-	-	-	-	R		
138	3						15.2	5970013.001	Adapter Profile	1	-	-	-	-	L/C/D/E		
139	3						15.3	5970014.001	Adapter Profile	1	-	-	-	-	R/C/D/E		
140					7		76.3	5971163.001	Plate	1	-	-	-	-	E		
141			5		7		52.1	5971186.001	Sensor	1	-	-	C	D	A		
142			5		7		52.2	5971187.001	Sensor	1	-	-	C	D	B		
143			5		7		52.3	5971188.001	Sensor	1	-	-	C	D	C		
144			5		7		53.1	5971189.001	Sensor	1	-	-	C	D	A		
145			5		7		53.2	5971193.001	Sensor	1	-	-	C	D	B		
146			5		7		53.3	5971194.001	Sensor	1	-	-	C	D	C		
147			5				49.1	5971416.001	PCB Applicator Interfaces	1	-	B	C	D	L		
148			5				49.2	5971417.001	PCB Applicator interfaces	1	-	B	C	D	R		
149					7		85.2	5974610.001	Adapter	1	-	-	-	-	E		
150		4					34.1	5976156.001	Valve Block	1	-	-	-	-	L		
151		4					34.2	5976157.001	Valve Block	1	-	-	-	-	R		
152						9	103.1	5979137.001	Mount Safety Valve	1	-	-	-	-	L/A/B/F		
153						9	108	5979239.001	One-way Flow Control Valve	1	-	-	-	-	A/B/F		
154						9	103.2	5979241.001	Mount Safety Valve	1	-	-	-	-	R/A/B/F		
155				6			69	5979307.001	Guide Rail	1	-	-	-	-	C		
156					7		74	5979327.001	Adapter Rail	1	-	-	-	-			
157				6			63.1	5979331.001	Guide Rail with Carriage	1	-	-	-	-	A		
158				6			63.2	5979342.001	Guide Rail with Carriage	1	-	-	-	-	B		
159				6			60.1	5979349.001	Plate	1	-	-	-	-	L/A/B		
160				6			58.1	5979353.001	Stopper	1	-	-	-	-	A/B		
161				6			60.2	5979417.001	Plate	1	-	-	-	-	R/A/B		
162				6			57.1	5979483.001	Stopper	1	-	-	-	-	A/B/O		

9 Packaging / Accessories

Pos	Figure/Page					No.	Part No.	Description	PU	SPR					Notes	Serial No.	
																	from
163							9109134.001	Packaging	1	-	-	-	-				

PU Package unit

Note

L Left
R Right
A 200
B 300
C 400
D 4114
E 4116

F Druckreduziert
M1 Appl. nach unten / horizontal
M2 Appl. nach oben
O Option

SPR Recommendation

A - wearing parts and accessories
B - recommended spare parts for quick repair
C - recommended spare parts for distributors
D - recommended spare parts for central stores