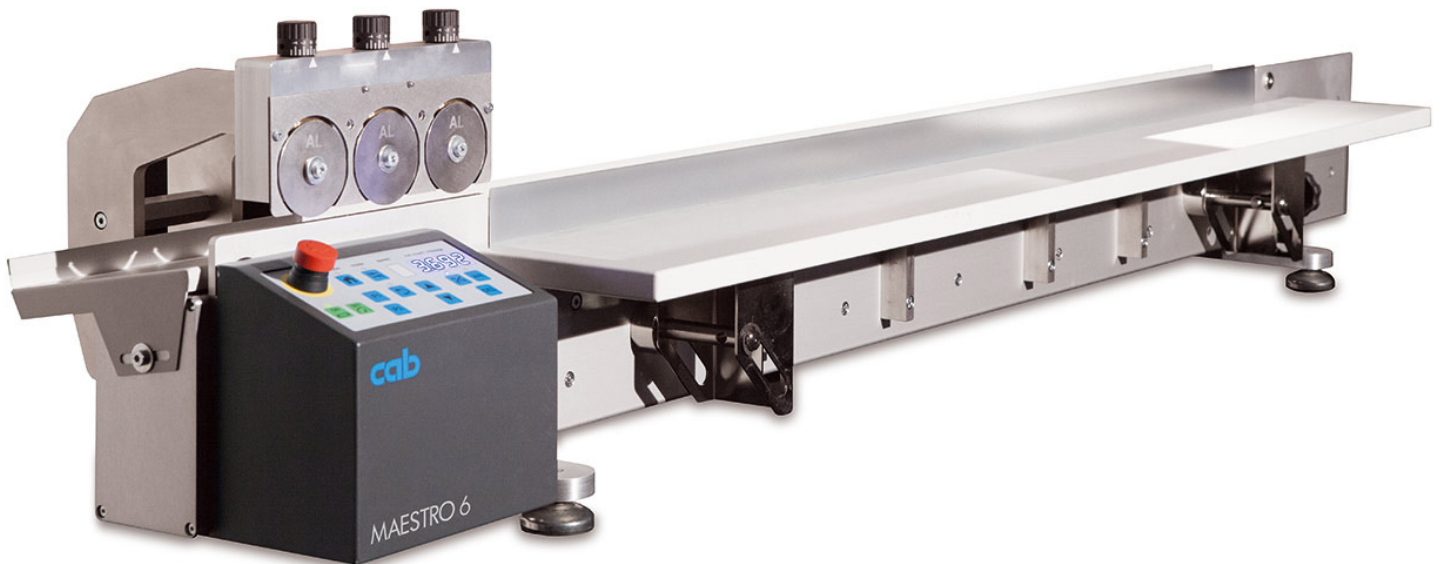


Spare Parts List



PCB Separator

MAESTRO 6

MADE IN GERMANY

for the following products

Family	Type
MAESTRO 6	Maestro 6/603 (Alu)
	Maestro 6/903 (Alu)
	Maestro 6/1203 (Alu)
	Maestro 6/1503 (Alu)
	Maestro 6/601 (.70)
	Maestro 6/901

Table of Contents

1	Base / Linea Blades	3
2	Blade Assembly / Carriage MAESTRO 6/xx3	4
3	Blade Assembly / Carriage MAESTRO 6/xx1	5
4	Control Panel / Electronics	6
5	Spare Parts Register	7
6	Packaging/Accessories.....	9

Edition: 06/2021 - Part No. 9003378

Copyright

This documentation as well as translation hereof are property of cab Produkttechnik GmbH & Co. KG.
The replication, conversion, duplication or divulgement of the whole manual or parts of it for other intentions than its original intended purpose - in particular the procurement of spare parts for products sold by cab – demand the previous written authorization by cab.

Editor

Regarding questions or comments please contact cab Produkttechnik GmbH & Co. KG.

Topicality

Due to the constant further development of our products discrepancies between documentation and product can occur.
Please check www.cab.de for the latest update.

Terms and conditions

Deliveries and performances are effected under the "General conditions of sale of cab"

Germany
cab Produkttechnik GmbH & Co KG
Karlsruhe
Phone +49 721 6626 0
www.cab.de

USA
cab Technology, Inc.
Chelmsford, MA
Phone +1 978 250 8321
www.cab.de/us

Taiwan
cab Technology Co., Ltd.
Taipei
Phone +886 (02) 8227 3966
www.cab.de/tw

China
cab (Shanghai) Trading Co., Ltd.
Guangzhou
Phone +86 (020) 2831 7358
www.cab.de/cn

France
cab Technologies S.à.r.l.
Niedermodern
Phone +33 388 722501
www.cab.de/fr

Mexico
cab Technology, Inc.
Juárez
Phone +52 656 682 4301
www.cab.de/es

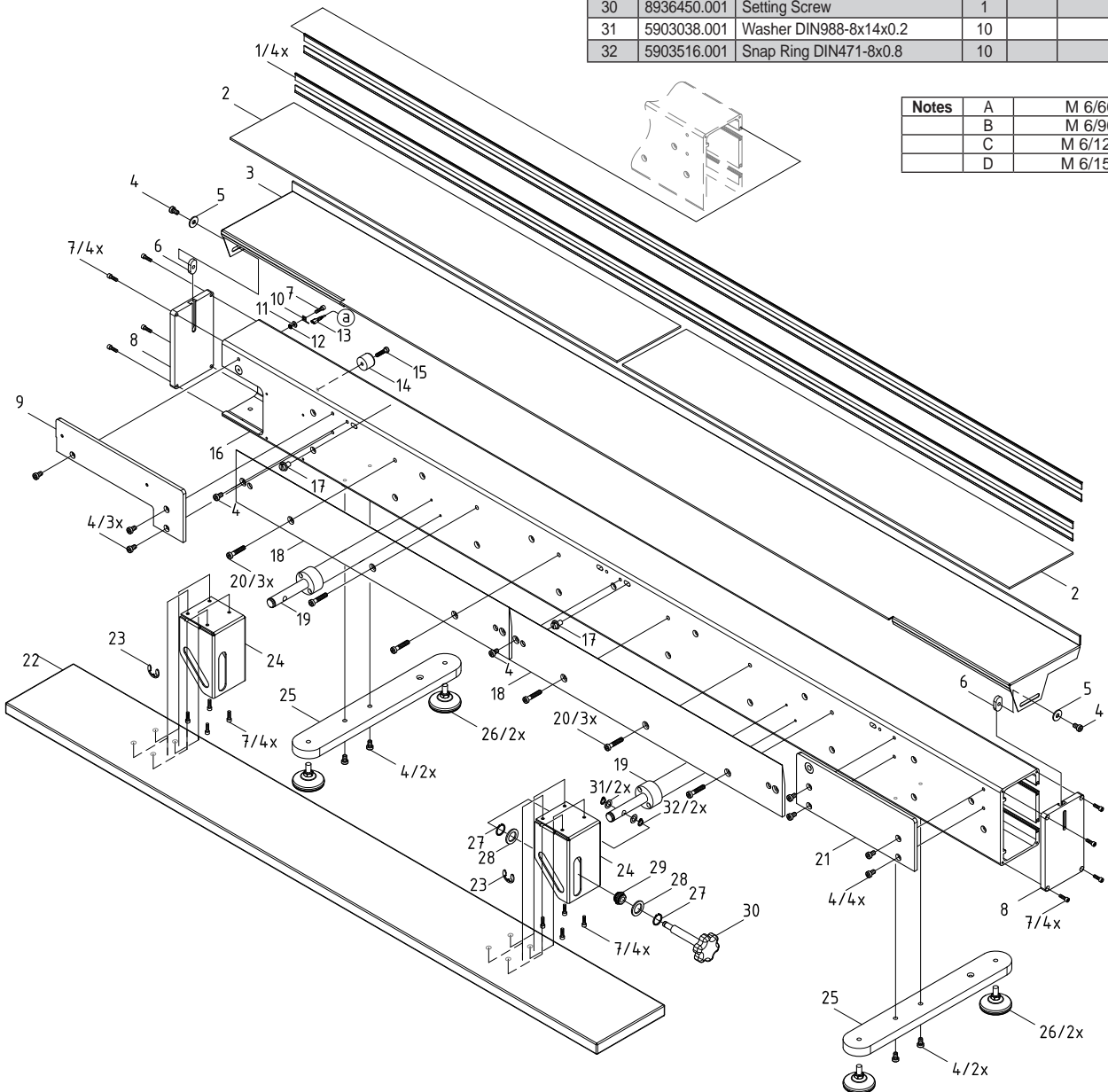
China
cab (Shanghai) Trading Co., Ltd.
Shanghai
Phone +86 (021) 6236 3161
www.cab.de/cn

South Africa
cab Technology (Pty) Ltd.
Randburg
Phone +27 11 886 3580
www.cab.de/za

No	Part No.	Description	PU	Note	Serial No.	
					from	to
1.1	8936516.001	Brush	1	A		
1.2	8936543.001	Brush	1	B		
1.3	8936481.001	Brush	1	C		
1.4	8936557.001	Brush	1	D		
2.1	8936518.001	Absorbing Foam	2	A/D		
2.2	8936555.001	Absorbing Foam	2	B		
2.3	8936502.001	Absorbing Foam	2	C/D		
3.1	8936519.001	Table	1	A		
3.2	8936545.001	Table	1	B		
3.3	8936503.001	Table	1	C		
3.4	8936561.001	Table	1	D		
4	5902375.001	Screw DIN7984-M6x10	10			
5	5903096.001	Washer DIN9021-6.4	10			
6	5901094.001	Slide Nut	1			
7	5902241.001	Screw DIN7984-M4x10	10			
8	8936420.001	Cover	1			
9	8936422.001	Rear Cover	1			
10	5917072.001	Tab DIN46244-A4	10			
11	5903003.001	Washer DIN125-A4.3	10			
12	5903011.001	Toothed Washer DIN6797-A4.3	10			
13	5953265.001	Cable	1			
14	5905227.001	Foot	5			

No	Part No.	Description	PU	Note	Serial No.	
					from	to
15	5902282.001	Screw DIN7984-M5x20	10			
16.1	8936508.001	Base Profile	1	A		
16.2	8936550.001	Base Profile	1	B		
16.3	8936404.001	Base Profile	1	C		
16.4	8936566.001	Base Profile	1	D		
17	8930605.001	Eccentric Axle	1			
18.1	8936592.001	Linear Blade 600	1	A/C/D		
18.2	8936593.001	Linear Blade 450	1	B/D		
19	8936416.001	Axle	1			
20	5902952.001	Screw DIN7984 M6x30	10			
21	8936421.001	Guard Plate	1			
22.1	8936522.001	Adjustable Platform	1	A		
22.2	8936553.001	Adjustable Platform	1	B		
22.3	8936449.001	Adjustable Platform	1	C		
22.4	8936564.001	Adjustable Platform	1	D		
23	5903511.001	E-Ring DIN6799-12	10			
24	8936417.001	Mounting Bracket	1			
25	8936414.001	Feet	1			
26	5906631.001	Adjusting Foot	0			
27	5903539.001	Snap Ring DIN471-16x1	10			
28	8931114.001	Slide Washer	1			
29	8931101.001	Sliding Nut	1			
30	8936450.001	Setting Screw	1			
31	5903038.001	Washer DIN988-8x14x0.2	10			
32	5903516.001	Snap Ring DIN471-8x0.8	10			

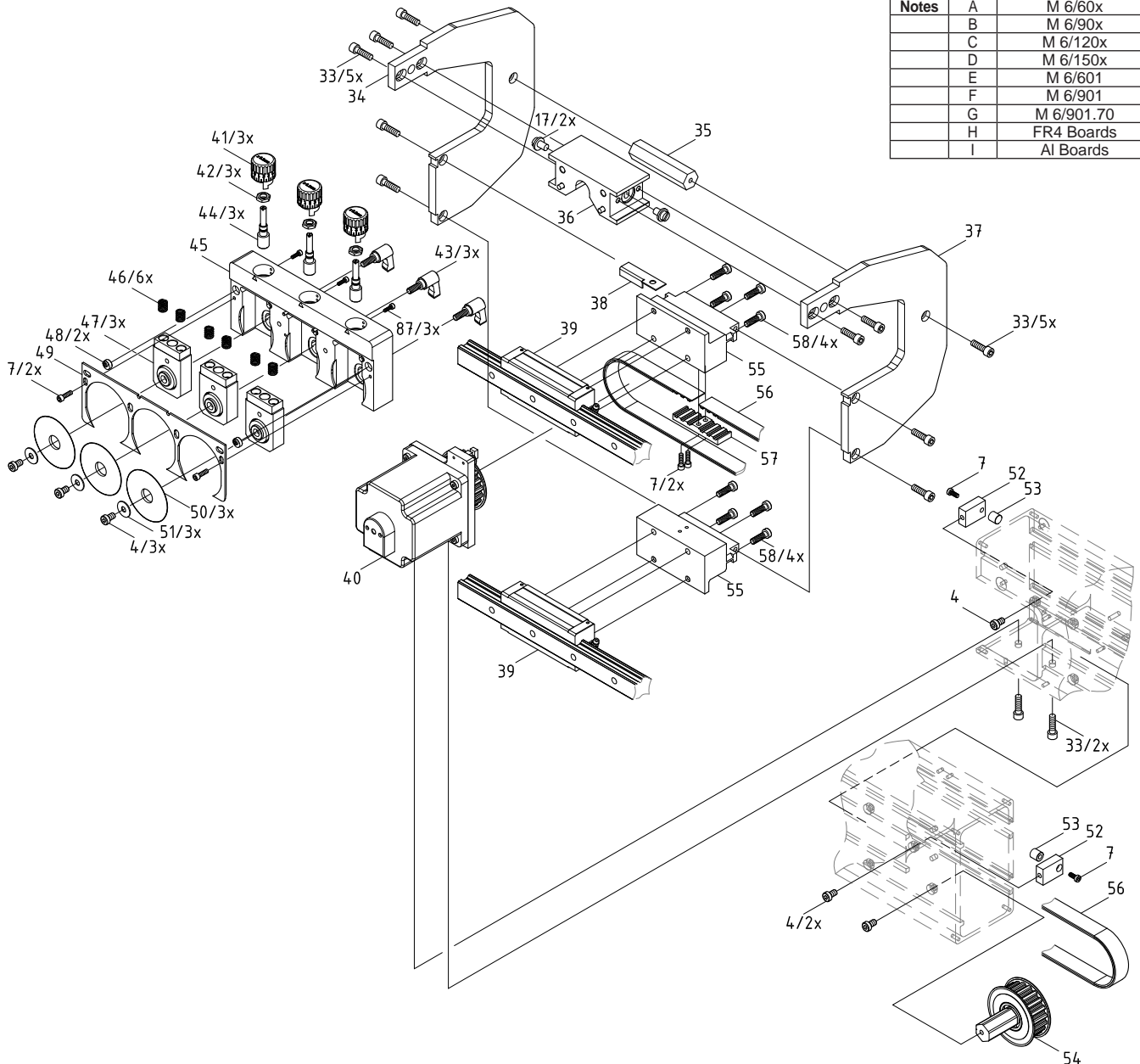
Notes	A	M 6/60x
	B	M 6/90x
	C	M 6/120x
	D	M 6/150x



No	Part No.	Description	PU	Note	Serial No.	
					from	to
4	5902375.001	Screw DIN7984-M6x10	10			
7	5902241.001	Screw DIN7984-M4x10	10			
17	8930605.001	Eccentric Axle	1			
33	5902361.001	Screw DIN7984-M6x16	10			
34	8936439.001	Plate	1	H		
35	8936441.001	Spacer Bushing	1	H		
36	8936472.001	Binder	1	H		
37	8936440.001	Plate	1	H		
38	8936409.001	Switch Plate	1			
39.1	8936512.001	Guiding System	1	A		
39.2	8936547.001	Guiding System	1	B		
39.3	8936455.001	Guiding System	1	C		
39.4	8936567.001	Guiding System	1	D		
40	8936453.001	Motor	1			
41	8936471.001	Set Knob	1			
42	5902682.001	Nut DIN439 M8x1	10			
43	5907602.001	Clamp Lever	1			
44	8936444.001	Spindle	1			
45	8936501.001	Corpus	1	H		

No	Part No.	Description	PU	Note	Serial No.	
					from	to
46	5905032.001	Spring	1			
47	8936470.001	Slide	1	H		
48	8936493.001	Eccentric	1	H		
49	8936437.001	Shield	1	EH		
50.1	8936446.001	Circular Blade FR4	1	I		
50.2	8936507.001	Circular Blade Alu	1	J		
51	8936498.001	Washer	1			
52	8936412.001	Stopper	1			
53	5905885.001	Stopper M4x10	1			
54	8936496.001	Washer	1	H		
55	8936408.001	Slide	1			
56.1	8936513.001	Belt	1	A		
56.2	8936548.001	Belt	1	B		
56.3	8936419.001	Belt	1	C		
56.4	8936568.001	Belt	1	D		
57	8936407.001	Clamp	1			
58	5909043.001	Screw DIN7984-M6x20	10			
87	5902010.001	Screw DIN912-M3x10	10	G		

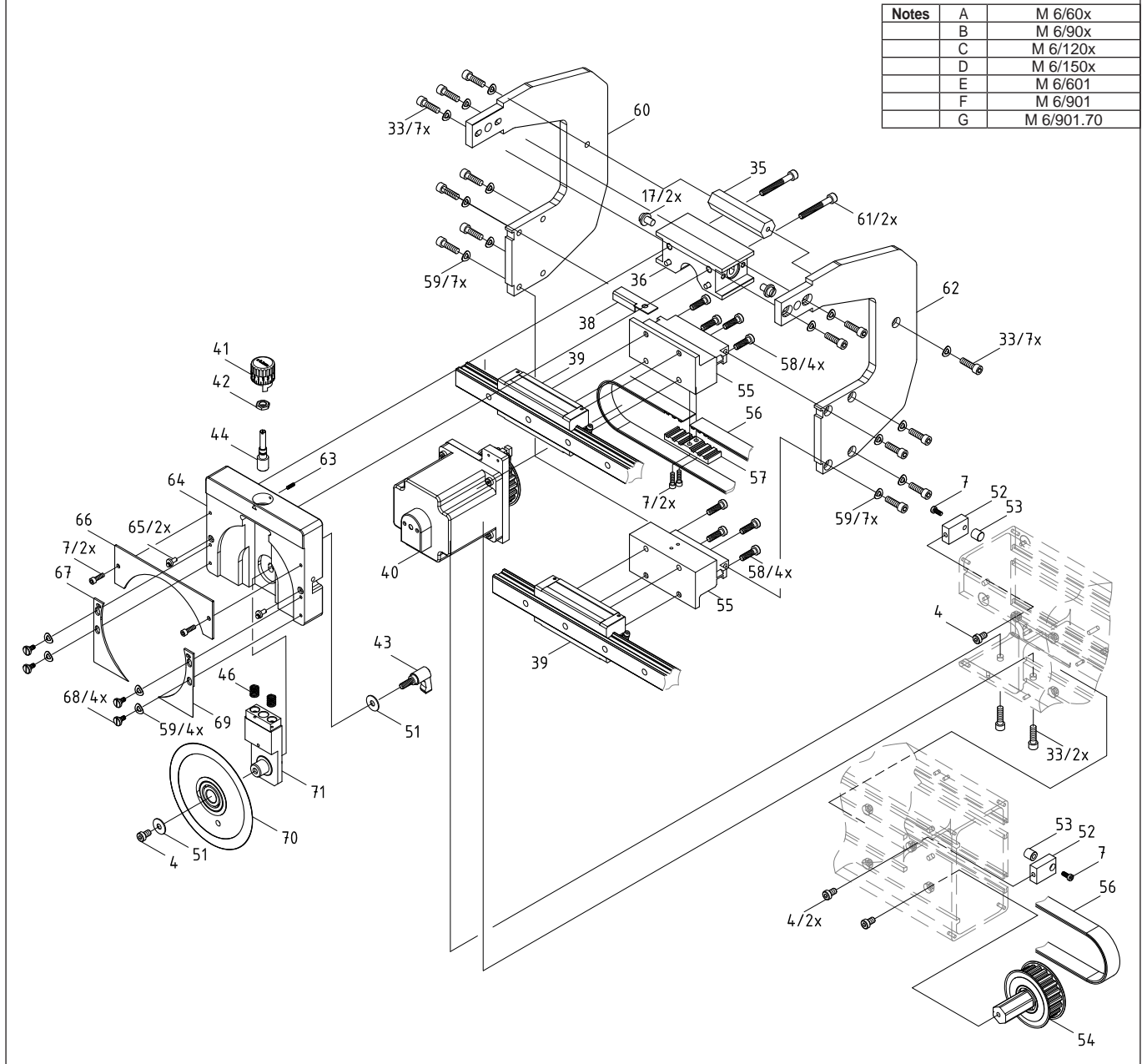
Notes	A	M 6/60x
	B	M 6/90x
	C	M 6/120x
	D	M 6/150x
	E	M 6/601
	F	M 6/901
	G	M 6/901.70
	H	FR4 Boards
	I	Al Boards



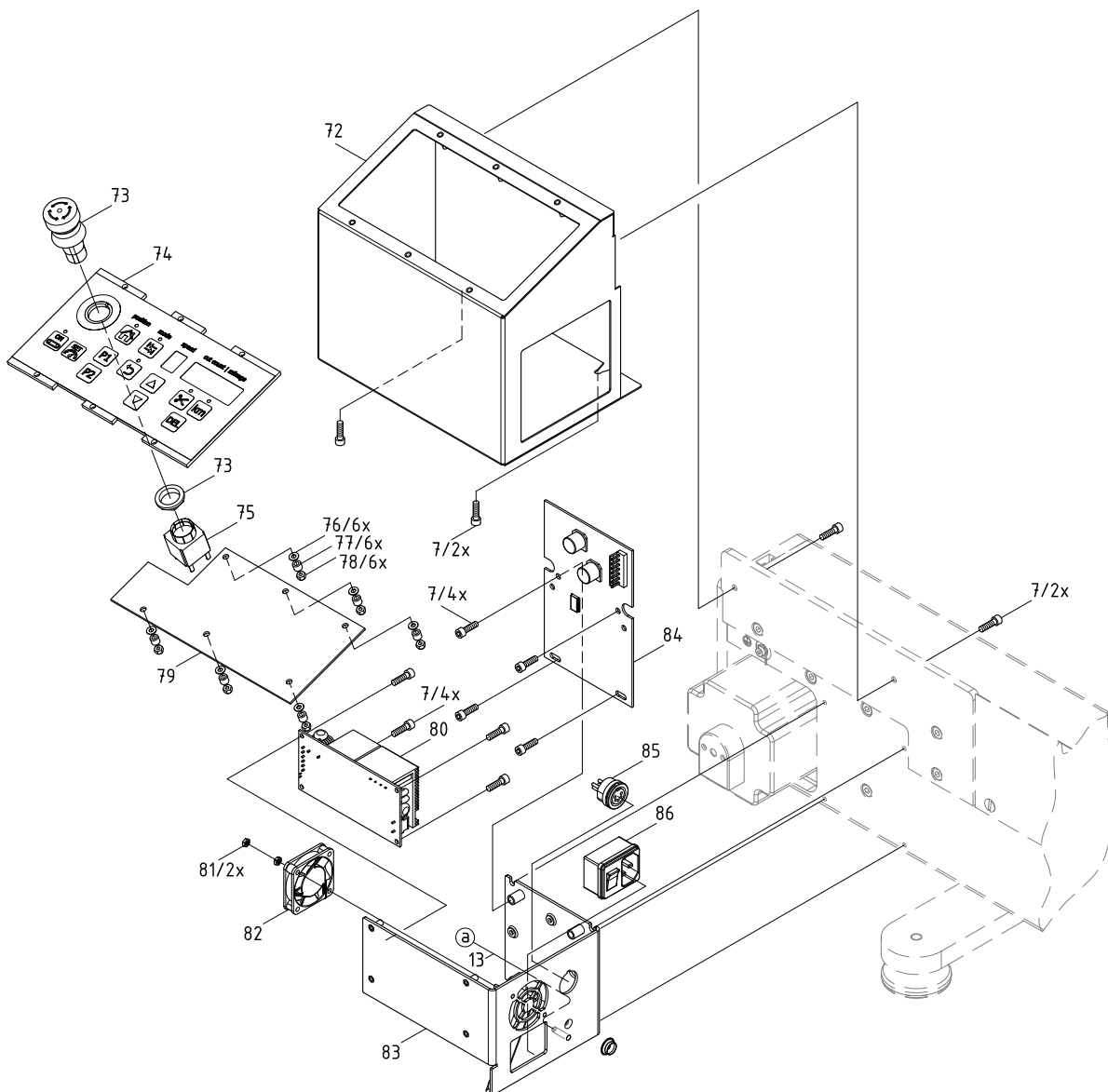
No	Part No.	Description	PU	Note	Serial No.	
					from	to
4	5902375.001	Screw DIN7984-M6x10	10			
7	5902241.001	Screw DIN7984-M4x10	10			
17	8930605.001	Eccentric Axle	1			
33	5902361.001	Screw DIN7984-M6x16	10			
38	8936409.001	Switch Plate	1			
39.1	8936512.001	Guiding System	1	A		
39.2	8936547.001	Guiding System	1	B		
40	8936453.001	Motor	1			
41	8936471.001	Set Knob	1			
42	5902682.001	Nut DIN439 M8x1	10			
43	5907602.001	Clamp Lever	1			
44	8936444.001	Spindle	1			
46	5905032.001	Spring	1			
51	8936498.001	Washer	1			
52	8936412.001	Stopper	1			
53	5905885.001	Stopper M4x10	1			
55	8936408.001	Slide	1			
56.1	8936513.001	Belt	1	A		
56.2	8936548.001	Belt	1	B		
57	8936407.001	Clamp	1			
58	5909043.001	Screw DIN7984-M6x20	10			

No	Part No.	Description	PU	Note	Serial No.	
					from	to
59	5903010.001	Spring Washer DIN137-A6	10			
60.1	8936574.001	Plate	1	E/F		
60.2	8936586.001	Plate	1	G		
61	5902404.001	Screw DIN912 M6x45	10			
62.1	8936575.001	Plate	1	E/F		
62.2	8936587.001	Plate	1	G		
63	5904562.001	Set Screw DIN913-M3x10	10			
64.1	8936533.001	Corpus	1	E/F		
64.2	8936577.001	Corpus	1	G		
65	8936643.001	Eccentric Axle	1			
66.1	8936534.001	Cover	1	E/F		
66.2	8936578.001	Cover	1	G		
67.1	8936615.001	Shield	1	E/F		
67.2	8936584.001	Shield	1	G		
68	8930590.001	Screw	1			
69.1	8936614.001	Shield	1	E/F		
69.2	8936583.001	Shield	1	G		
70.1	8930509.001	Circular Blade	1	E/F		
70.2	8933933.001	Circular Blade	1	G		
71	8936526.001	Slide	1			

Notes	A	M 6/60x
	B	M 6/90x
	C	M 6/120x
	D	M 6/150x
	E	M 6/601
	F	M 6/901
	G	M 6/901.70



No	Part No.	Description	PU	Note	Serial No.	
					from	to
7	5902241.001	Screw DIN7984-M4x10				
13	5953265.001	Cable				
72	8936427.001	Front Cover				
73	5917167.001	Emergency Switch				
74	8936428.001	Control Panel				
75	5917168.001	Emergency Switch Element				
76	5903004.001	Washer DIN125-A3.2				
77	5900516.001	Spacer Bushing PA M3x5				
78	5902509.001	Nut DIN985 M3				
79	8936432.001	PCB Control Panel				
80	5918992.001	Power Supply				
81	5902505.001	Nut DIN934-M3				
82	8936596.001	Fan				
83	8936505.001	Electronic Support				
84	8936435.001	PCB Control				
85	8936597.001	Jack				
86	5917931.001	Power input Module				



5 Spare Parts Register

Pos.	Figure/Page				No.	Part No.	Description	PU	SPR				Notes	Serial No.	
1				x	77	5900516.001	Spacer Bushing PA M3x5	10							
2	x				6	5901094.001	Slide Nut	1							
3		x			87	5902010.001	Screw DIN912-M3x10	10				H			
4	x	x	x	x	7	5902241.001	Screw DIN7984-M4x10	10							
5	x				15	5902282.001	Screw DIN7984-M5x20	10							
6		x	x		33	5902361.001	Screw DIN7984-M6x16	10							
7	x	x	x		4	5902375.001	Screw DIN7984-M6x10	10							
8			x		61	5902404.001	Screw DIN912 M6x45	10				E/F/G			
9				x	81	5902505.001	Nut DIN934-M3	10							
10				x	78	5902509.001	Nut DIN985 M3	10							
11		x	x		42	5902682.001	Nut DIN439 M8x1	10							
12	x				20	5902952.001	Screw DIN7984 M6x30	10							
13	x				11	5903003.001	Washer DIN125-A4.3	10							
14				x	76	5903004.001	Washer DIN125-A3.2	10							
15			x		59	5903010.001	Spring Washer DIN137-A6	10				E/F/G			
16	x				12	5903011.001	Toothed Washer DIN6797-A4.3	10							
17	x				31	5903038.001	Washer DIN988-8x14x0.2	10							
18	x				5	5903096.001	Washer DIN9021-6.4	10							
19	x				23	5903511.001	E-Ring DIN6799-12	10							
20	x				32	5903516.001	Snap Ring DIN471-8x0.8	10							
21	x				27	5903539.001	Snap Ring DIN471-16x1	10							
22			x		63	5904562.001	Set Screw DIN913-M3x10	10				E/F/G			
23		x	x		46	5905032.001	Spring	1							
24	x				14	5905227.001	Foot	5							
25		x	x		53	5905885.001	Stopper M4x10	1							
26	x				26	5906631.001	Adjusting Foot	0							
27		x	x		43	5907602.001	Clamp Lever	1							
28		x	x		58	5909043.001	Screw DIN7984-M6x20	10							
29	x				10	5917072.001	Tab DIN46244-A4	10							
30				x	73	5917167.001	Emergency Switch	1							
31				x	75	5917168.001	Emergency Switch Element	1							
32				x	86	5917931.001	Power input Module	1							
33				x	80	5918992.001	Power Supply	1							
34	x			x	13	5953265.001	Cable	1							
35			x		70.1	8930509.001	Circular Blade	1				E/F			
36			x		68	8930590.001	Screw	1				E/F/G			
37	x	x	x		17	8930605.001	Eccentric Axle	1							
38	x				29	8931101.001	Sliding Nut	1							
39	x				28	8931114.001	Slide Washer	1							
40			x		70.2	8933933.001	Circular Blade	1				G			
41	x				16.3	8936404.001	Base Profile	1				C			
42		x	x		57	8936407.001	Clamp	1							
43		x	x		55	8936408.001	Slide	1							
44		x	x		38	8936409.001	Switch Plate	1							
45		x	x		52	8936412.001	Stopper	1							
46	x				25	8936414.001	Feet	1							
47	x				19	8936416.001	Axle	1							
48	x				24	8936417.001	Mounting Bracket	1							
49		x			56.3	8936419.001	Belt	1				C			
50	x				8	8936420.001	Cover	1							
51	x				21	8936421.001	Guard Plate	1							
52	x				9	8936422.001	Rear Cover	1							
53				x	72	8936427.001	Front Cover	1							

PU Package unit

Notes

A M 6/60x

H FR4 Boards

B M 6/90x

I AI Boards

C M 6/120x

D M 6/150x

E M 6/601

F M 6/901

G M 6/901.70

SPR Recommendation

A - wearing parts and accessories

B - recommended spare parts for quick repair

C - recommended spare parts for distributors

D - recommended spare parts for central stores

Pos.	Figure/Page			No.	Part No.	Description	PU	SPR			Notes	Serial No.	
								from	to				
54			x	74	8936428.001	Control Panel	1						
55			x	79	8936432.001	PCB Control Panel	1						
56			x	84	8936435.001	PCB Control	1						
57	x			49	8936437.001	Shield	1				H		
58	x			34	8936439.001	Plate	1				H		
59	x			37	8936440.001	Plate	1				H		
60	x			35	8936441.001	Spacer Bushing	1				H		
61	x	x		44	8936444.001	Spindle	1						
62		x		50.1	8936446.001	Circular Blade FR4	1				I		
63	x			22.3	8936449.001	Adjustable Platform	1				C		
64	x			30	8936450.001	Setting Screw	1						
65		x	x	40	8936453.001	Motor	1						
66		x		39.3	8936455.001	Guiding System	1				C		
67		x		47	8936470.001	Slide	1				H		
68		x	x	41	8936471.001	Set Knob	1						
69		x		36	8936472.001	Binder	1				H		
70	x			1.3	8936481.001	Brush	1				C		
71		x		48	8936493.001	Eccentric	1				H		
72		x		54	8936496.001	Washer	1				H		
73		x	x	51	8936498.001	Washer	1						
74		x		45	8936501.001	Corpus	1				H		
75	x			2.3	8936502.001	Absorbing Foam	2				C(2x) / D(1x)		
76	x			3.3	8936503.001	Table	1				C		
77			x	83	8936505.001	Electronic Support	1						
78		x		50.2	8936507.001	Circular Blade Alu	1				J		
79	x			16.1	8936508.001	Base Profile	1				A		
80		x	x	39.1	8936512.001	Guiding System	1				A		
81		x	x	56.1	8936513.001	Belt	1				A		
82	x			1.1	8936516.001	Brush	1				A		
83	x			2.1	8936518.001	Absorbing Foam	2				A(2x) / D(2x)		
84	x			3.1	8936519.001	Table	1				A		
85	x			22.1	8936522.001	Adjustable Platform	1				A		
86			x	71	8936526.001	Slide	1				E/F/G		
87			x	64.1	8936533.001	Corpus	1				E/F		
88			x	66.1	8936534.001	Cover	1				E/F		
89	x			1.2	8936543.001	Brush	1				B		
90	x			3.2	8936545.001	Table	1				B		
91		x	x	39.2	8936547.001	Guiding System	1				B		
92		x	x	56.2	8936548.001	Belt	1				B		
93	x			16.2	8936550.001	Base Profile	1				B		
94	x			22.2	8936553.001	Adjustable Platform	1				B		
95	x			2.2	8936555.001	Absorbing Foam	2				B		
96	x			1.4	8936557.001	Brush	1				D		
97	x			3.4	8936561.001	Table	1				D		
98	x			22.4	8936564.001	Adjustable Platform	1				D		
99	x			16.4	8936566.001	Base Profile	1				D		
100		x		39.4	8936567.001	Guiding System	1				D		
101		x		56.4	8936568.001	Belt	1				D		
102			x	60.1	8936574.001	Plate	1				E/F		
103			x	62.1	8936575.001	Plate	1				E/F		
104			x	64.2	8936577.001	Corpus	1				G		
105			x	66.2	8936578.001	Cover	1				G		
106			x	69.2	8936583.001	Shield	1				G		
107			x	67.2	8936584.001	Shield	1				G		

PU Package unit

Notes

A M 6/60x

H FR4 Boards

B M 6/90x

I Al Boards

C M 6/120x

D M 6/150x

E M 6/601

F M 6/901

G M 6/901.70

SPR Recommendation

A - wearing parts and accessories

B - recommended spare parts for quick repair

C - recommended spare parts for distributors

D - recommended spare parts for central stores

5 Spare Parts Register

9

Pos.	Figure/Page			No.	Part No.	Description	PU	SPR			Notes	Serial No.	
								from	to				
108			x	60.2	8936586.001	Plate	1				G		
109			x	62.2	8936587.001	Plate	1				G		
110	x			18.1	8936592.001	Linear Blade 600	1				A(1x) / C(2x) / D(1x)		
111	x			18.2	8936593.001	Linear Blade 450	1				B(2x) / D(2x)		
112			x	82	8936596.001	Fan	1						
113			x	85	8936597.001	Jack	1						
114			x	69.1	8936614.001	Shield	1				E/F		
115			x	67.1	8936615.001	Shield	1				E/F		
116			x	65	8936643.001	Eccentric Axle	1				E/F/G		

6 Packaging/Accessories

Pos.	Figure/Page			No.	Part No.	Description	PU	SPR			Notes	Serial No.	
								from	to				
117					8936535.001	Foot Switch	1						
118					5550611.001	Power Cable Type E+F	1						
119					8936480.001	Mesuring Equipment MAESTRO 6	1						
120					9109354.001	Packaging	1				A		
121					9109355.001	Packaging	1				B		
122					9109327.001	Packaging	1				C		
123					9109360.001	Packaging	1				D		

PU Package unit

SPR Recommendation

A - wearing parts and accessories

B - recommended spare parts for quick repair

C - recommended spare parts for distributors

D - recommended spare parts for central stores

Notes

A M 6/60x

B M 6/90x

C M 6/120x

D M 6/150x

E M 6/601

F M 6/901

G M 6/901.70

H FR4 Boards

I Al Boards