

Spare Parts List



Demand Module

S5104 / S5106

Family	Type
Demand Module	S5104
	S5106

Table of Contents

1	Demand Module.....	3
2	Spare parts index.....	4
3	Packaging	4

Edition: 04/2019 - Part.-No. 9003073

Copyright

This documentation as well as translation hereof are property of cab Produkttechnik GmbH & Co. KG.

The replication, conversion, duplication or divulgement of the whole manual or parts of it for other intentions than its original intended purpose demand the previous written authorization by cab.

Editor

Regarding questions or comments please contact cab Produkttechnik GmbH & Co. KG.

Topicality

Due to the constant further development of our products discrepancies between documentation and products can occur.

Please check www.cab.de for the latest update.

Terms and conditions

Deliveries and performances are effected under the General conditions of sale of cab.

Germany
cab Produkttechnik GmbH & Co KG
 Karlsruhe
 Phone +49 721 6626 0
www.cab.de

USA
cab Technology, Inc.
 Chelmsford, MA
 Phone +1 978 250 8321
www.cab.de/us

Taiwan
cab Technology Co., Ltd.
 Taipei
 Phone +886 (02) 8227 3966
www.cab.de/tw

China
cab (Shanghai) Trading Co., Ltd.
 Guangzhou
 Phone +86 (020) 2831 7358
www.cab.de/cn

France
cab Technologies S.à.r.l.
 Niedermodern
 Phone +33 388 722501
www.cab.de/fr

Mexico
cab Technology, Inc.
 Juárez
 Phone +52 656 682 4301
www.cab.de/es

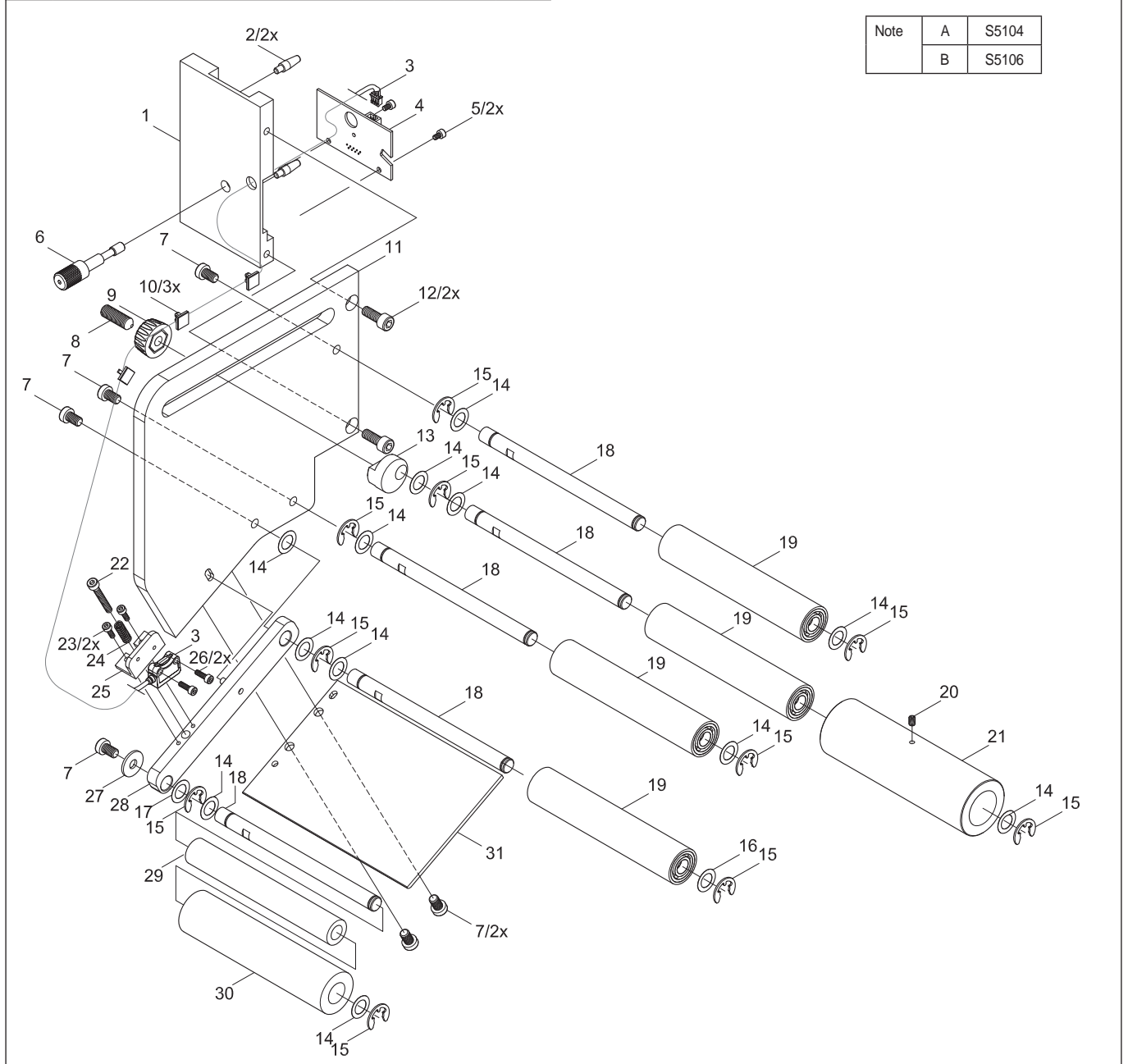
China
cab (Shanghai) Trading Co., Ltd.
 Shanghai
 Phone +86 (021) 6236 3161
www.cab.de/cn

South Africa
cab Technology (Pty) Ltd.
 Randburg
 Phone +27 11 886 3580
www.cab.de/za

No	Part No.	Description	PU	Note	Serial No.	
					from	to
1	5978971.001	Mounting Plate	1			
2	5949144.001	Center Pin	1			
3	5977299.001	Dispense Sensor	1			
4	5977753.001	PCB Dispense Electronics	1			
5	5902168.001	Screw DIN912-M3x5	10			
6	5541590.001	Knurled Screw	1			
7	5902375.001	Screw DIN7984-M6x10	10			
8	5904526.001	Set Screw DIN914-M8x25	10			
9	5978999.001	Knurled Knob	1			
10	5901575.001	Cable Clamp	10			
11	5978975.001	Base Plate	1			
12	5902124.001	Screw DIN912-M6x16	10			
13	5941160.001	Slide	1			
14	5903043.001	Washer DIN988-10x16x0.2	10			
15	5903510.001	E-Ring DIN6799-9	10			
16	5903059.001	Washer DIN988-10x16x0.5	10			
17	5903054.001	Washer DIN988-10x16x1	10			
18.1	5941157.001	Axle	1	A		
18.2	5941182.001	Axle	1	B		

No	Part No.	Description	PU	Note	Serial No.	
					from	to
19.1	5941167.001	Roll	1	A		
19.2	5941189.001	Roll	1	B		
20	5904516.001	Set Screw DIN913-M4x6	10			
21.1	5949332.001	Belt Roller	1	A		
21.2	5941186.001	Belt Roller	1	B		
22	5902297.001	Screw DIN912-M4x30	10			
23	5902010.001	Screw DIN912-M3x10	10			
24	5905034.001	Spring	1			
25	5979021.001	Bracket Sensor	1			
26	5902009.001	Screw DIN912-M3x12	10			
27	5903040.001	Washer DIN125-A6,4	10			
28	5978972.001	Lever	1			
29.1	5941165.001	Core	1	A		
29.2	5941184.001	Core	1	B		
30.1	5979015.001	Foam Roll	1	A		
30.2	5979297.001	Foam Roll	1	B		
31.1	5941158.001	Dispense Plate	1	A		
31.2	5941183.001	Dispense Plate	1	B		

Note	A	S5104
	B	S5106



Pos.	Figure/Page	No.	Part No.	Description	PU	SPR				Notes	Serial No.	
											from	to
1	3	6	5541590.001	Knurled Screw	1							
2	3	10	5901575.001	Cable Clamp	10		B	C	D			
3	3	26	5902009.001	Screw DIN912-M3x12	10							
4	3	23	5902010.001	Screw DIN912-M3x10	10							
5	3	12	5902124.001	Screw DIN912-M6x16	10							
6	3	5	5902168.001	Screw DIN912-M3x5	10							
7	3	22	5902297.001	Screw DIN912-M4x30	10							
8	3	7	5902375.001	Screw DIN7984-M6x10	10							
9	3	27	5903040.001	Washer DIN125-A6,4	10							
10	3	14	5903043.001	Washer DIN988-10x16x0.2	10		B	C	D			
11	3	17	5903054.001	Washer DIN988-10x16x1	10		B	C	D			
12	3	16	5903059.001	Washer DIN988-10x16x0.5	10		B	C	D			
13	3	15	5903510.001	E-Ring DIN6799-9	10							
14	3	20	5904516.001	Set Screw DIN913-M4x6	10							
15	3	8	5904526.001	Set Screw DIN914-M8x25	10							
16	3	24	5905034.001	Spring	1							
17	3	18.1	5941157.001	Axle	1					A		
18	3	31.1	5941158.001	Dispense Plate	1					A		
19	3	13	5941160.001	Slide	1							
20	3	29.1	5941165.001	Core	1					A		
21	3	19.1	5941167.001	Roll	1			C	D	A		
22	3	18.2	5941182.001	Axle	1					B		
23	3	31.2	5941183.001	Dispense Plate	1					B		
24	3	29.2	5941184.001	Core	1					B		
25	3	21.2	5941186.001	Belt Roller	1					B		
26	3	19.2	5941189.001	Roll	1					B		
27	3	2	5949144.001	Center Pin	1							
28	3	21.1	5949332.001	Belt Roller	1					A		
29	3	3	5977299.001	Dispense Sensor	1		B	C	D			
30	3	4	5977753.001	PCB Dispense Electronics	1		B	C	D			
31	3	1	5978971.001	Mounting Plate	1							
32	3	28	5978972.001	Lever	1							
33	3	11	5978975.001	Base Plate	1							
34	3	9	5978999.001	Knurled Knob	1							
35	3	30.1	5979015.001	Foam Roll	1			C	D	A		
36	3	25	5979021.001	Bracket Sensor	1							
37	3	30.2	5979297.001	Foam Roll	1			C	D	B		

3 Packaging

Pos.	Figure/Page	No.	Part No.	Description	PU	SPR				Notes	Serial No.	
											from	to
38			9109134.001	Packaging	1							

PU Package unit

Notes

A S5104

B S5106

SPR Recommendation

A - wearing parts and accessories

B - recommended spare parts for quick repair

C - recommended spare parts for distributors

D - recommended spare parts for central stores