

Spare Parts List



Applicator

S1000

Made in Germany

for the following products

Family	Type
S1000	S1000-220
	S1000-300
	S1000-400

Contents

1	Chassis, PCBs, Service Unit	3
2	Valve Terminal, Vacuum Generator	4
3	Energy Track.....	5
4	Cylinder Assembly, Blow Tube.....	6
5	Universal Pads.....	7
6	Spare Parts Register	8

Edition: 08/2018 - Part No. 9003147

Copyright

This documentation as well as translation hereof are property of cab Produkttechnik GmbH & Co. KG. The replication, conversion, duplication or divulgement of the whole manual or parts of it for other intentions than its original intended purpose - in particular the procurement of spare parts for products sold by cab – demand the previous written authorisation by cab.

Editor

Regarding questions or comments please contact cab Produkttechnik GmbH & Co. KG.

Topicality

Due to the constant further development of our products discrepancies between documentation and product can occur. Please check www.cab.de for the latest update.

Terms and conditions

Deliveries and performances are effected under the "General conditions of sale of cab"

Germany
cab Produkttechnik GmbH & Co KG
 Karlsruhe
 Phone +49 721 6626 0
www.cab.de

USA
cab Technology, Inc.
 Chelmsford, MA
 Phone +1 978 250 8321
www.cab.de/us

Taiwan
cab Technology Co., Ltd.
 Taipei
 Phone +886 (02) 8227 3966
www.cab.de/tw

China
cab (Shanghai) Trading Co., Ltd.
 Guangzhou
 Phone +86 (020) 2831 7358
www.cab.de/cn

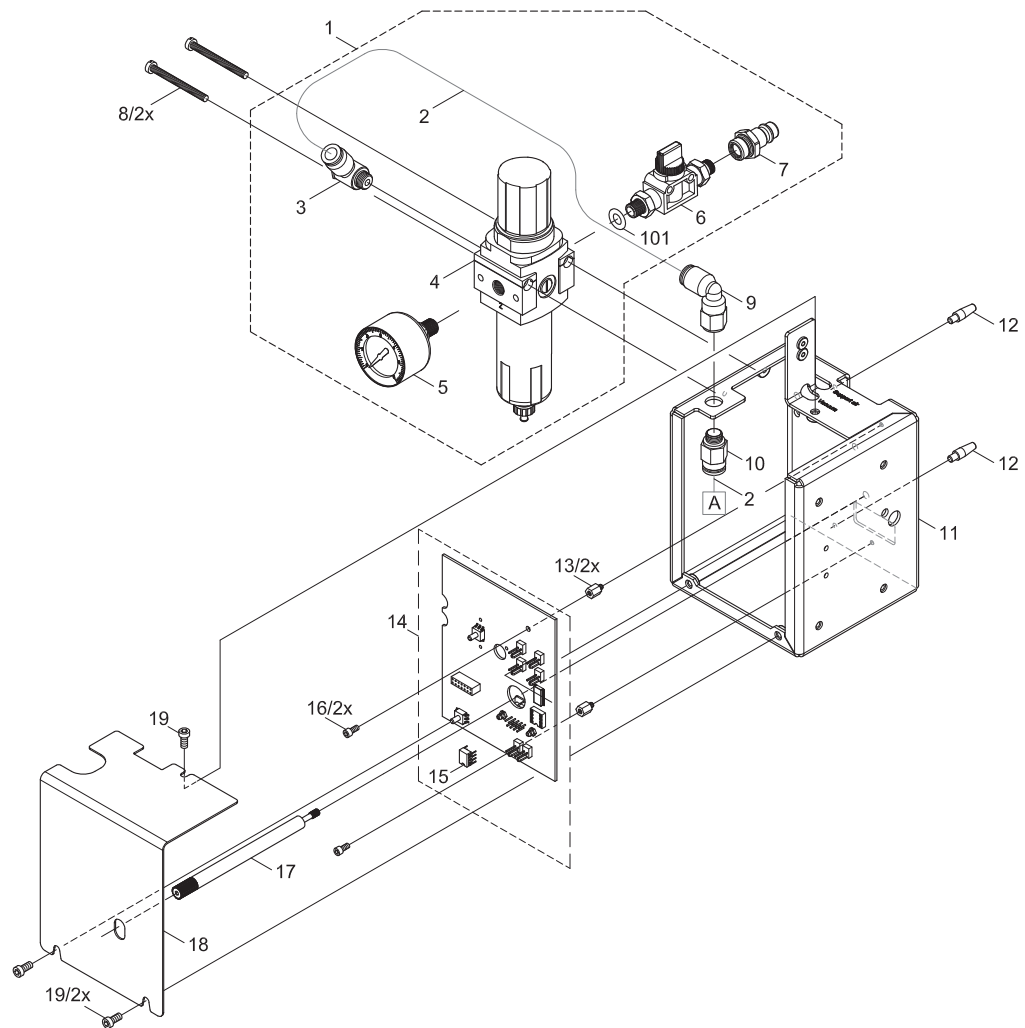
France
cab Technologies S.à.r.l.
 Niedermodern
 Phone +33 388 722501
www.cab.de/fr

Mexico
cab Technology, Inc.
 Juárez
 Phone +52 656 682 4301
www.cab.de/es

China
cab (Shanghai) Trading Co., Ltd.
 Shanghai
 Phone +86 (021) 6236 3161
www.cab.de/cn

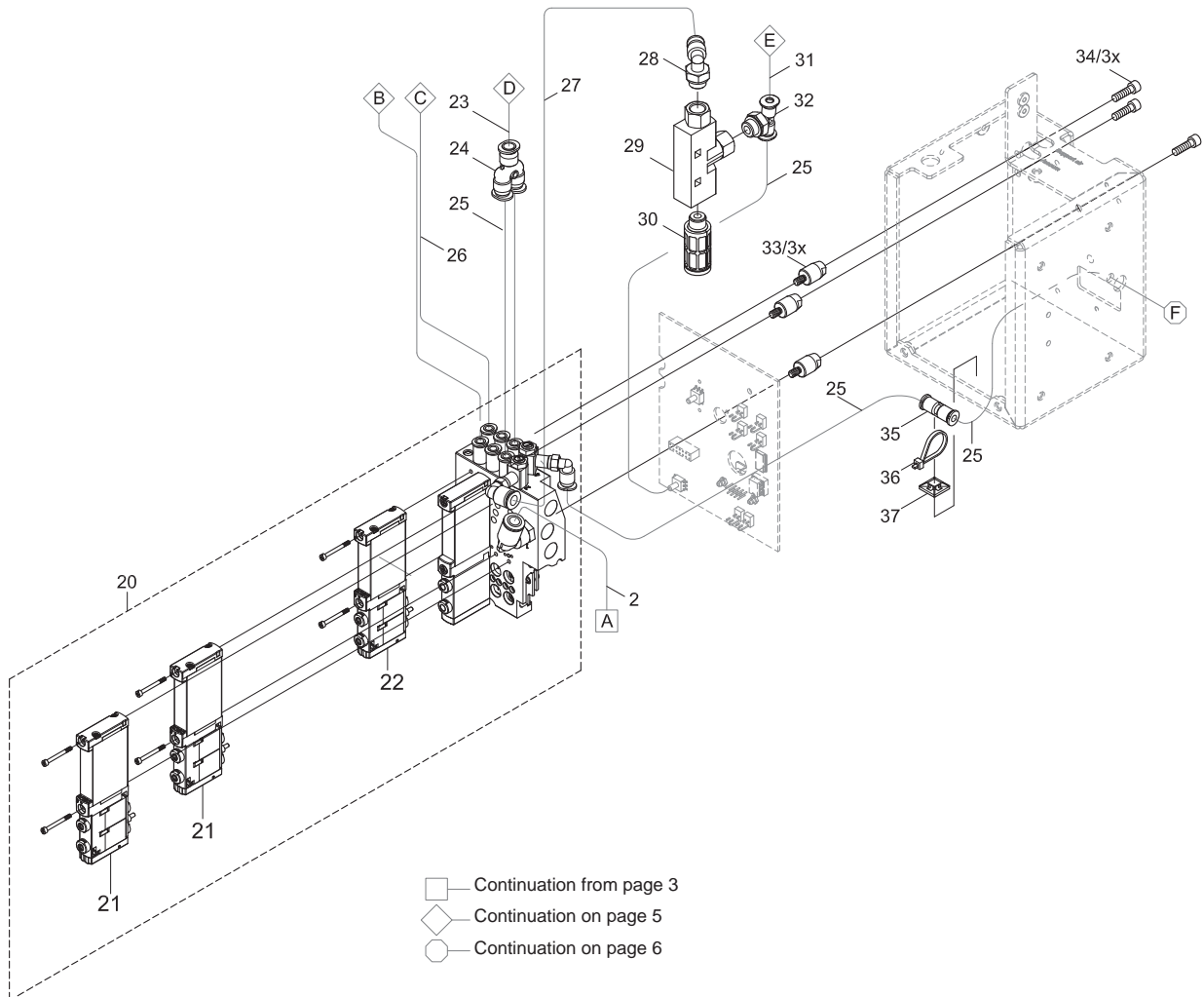
South Africa
cab Technology (Pty) Ltd.
 Randburg
 Phone +27 11 886 3580
www.cab.de/za

No	Part No.	Description	PU	Note	Serial No.	
					from	to
1	5979024.001	Service Unit	1			
2	5966465.001	Tube	2m			
3	5906913.001	Push-in L-Connector	1			
4	5907339.001	Filter Regulator	1			
5	5907340.001	Manometer	1			
6	5907338.001	Block Valve	1			
7	5907337.001	Coupling Plug	1			
8	5902449.001	Screw DIN7984-M4x40	10			
9	5905285.001	Push-in L-Connector	1			
10	5905667.001	Push-in/threaded Fitting	1			
11	5978948.001	Frame	1			
12	5949144.001	Center Pin	1			
13	5949058.001	Distance Bolt M3x7.5	1			
14	5978994.001	PCB Control	1			
15	5978993.001	EEPROM	1			
16	5902007.001	Screw DIN912-M3x6	10			
17	5978945.001	Knurled Screw	1			
18	5978950.001	Cover	1			
19	5902241.001	Screw DIN7984-M4x10	10			
101	5905130.001	Sealing Ring O-1/4-200	10			



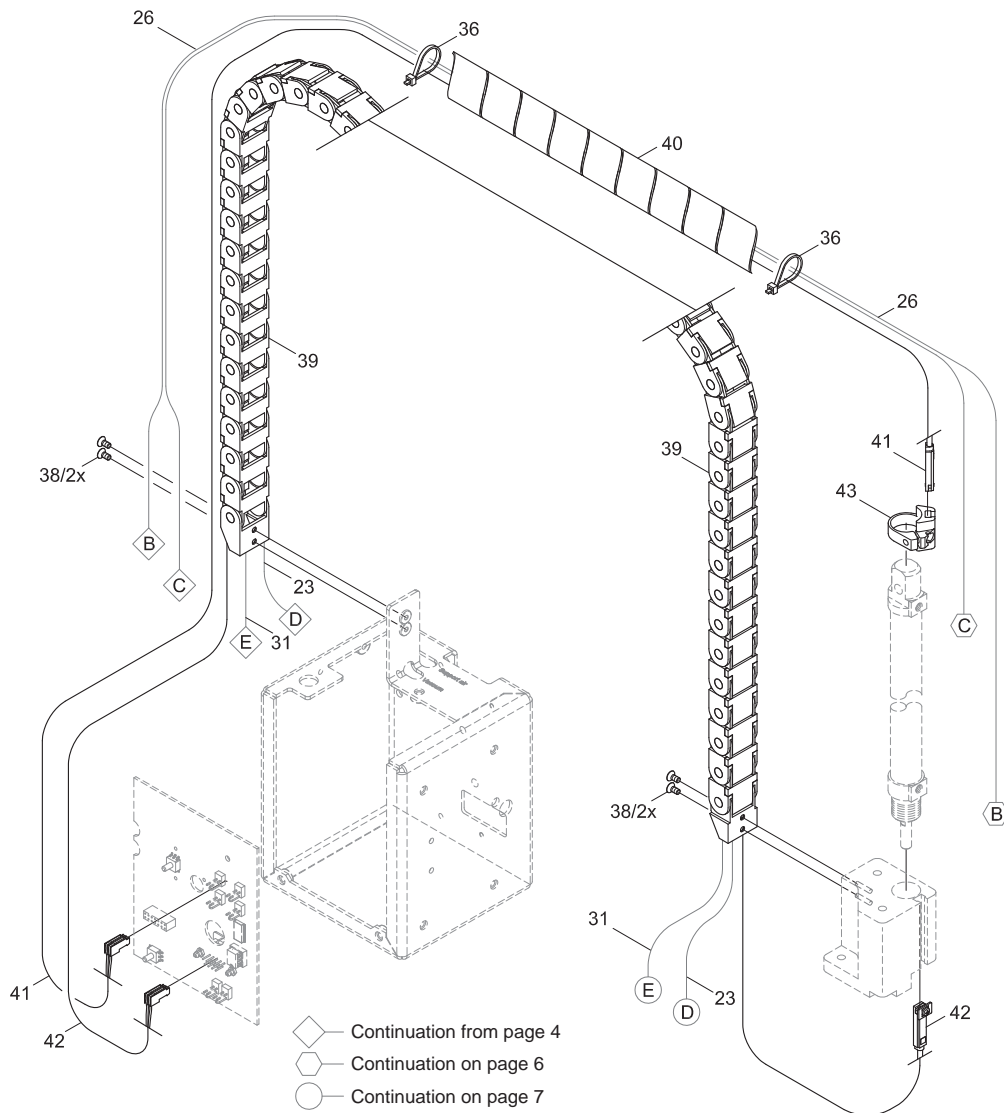
Continuation on page 4

No	Part No.	Description	PU	Note	Serial No.	
					from	to
2	5966465.001	Tube	2m			
20	5907276.001	Valve Block	1			
21	5907428.001	Valve	1			
22	5907429.001	Valve	1			
23	5966461.001	Tube	2m			
24	5905972.001	Push-in Y-Fitting	1			
25	5966463.001	Tube	2m			
26	5966466.001	Tube	2m			
27	5966464.001	Tube	2m			
28	5906914.001	Push-in L-Connector	1			
29	5906844.001	Vacuum Generator	1			
30	5905257.001	Silencer	1			
31	5966460.001	Tube	2m			
32	5906915.001	Push-in T-Connector	1			
33	5949469.001	Distance Bolt	10			
34	5902565.001	Screw DIN7984-M4x10	10			
35	5905603.001	Push-in/threaded Fitting	1			
36	5901505.001	Cable Clamp L=102	10			
37	5905124.001	Adhesive Plate 12.7x12.7	1			



No	Part No.	Description	PU	Note	Serial No.	
					from	to
23	5966461.001	Tube	2m			
26	5966466.001	Tube	2m			
30	5901505.001	Cable Clamp L=102	10			
31	5966460.001	Tube	2m			
38	5902021.001	Screw DIN7991-M3x6	10			
39.1	5949173.001	Energy Track	1	A		
39.2	5949033.001	Energy Track	1	B		
39.3	5949239.001	Energy Track	1	C		
40	5901612.001	Ducting	1			
41.1	5976127.001	Sensor	1	A		
41.2	5976128.001	Sensor	1	B		
41.3	5949238.001	Sensor	1	C		
42.1	5949177.001	Sensor	1	A		
42.2	5976130.001	Sensor	1	B		
42.3	5976131.001	Sensor	1	C		
43	5905593.001	Mounting Clip	1			

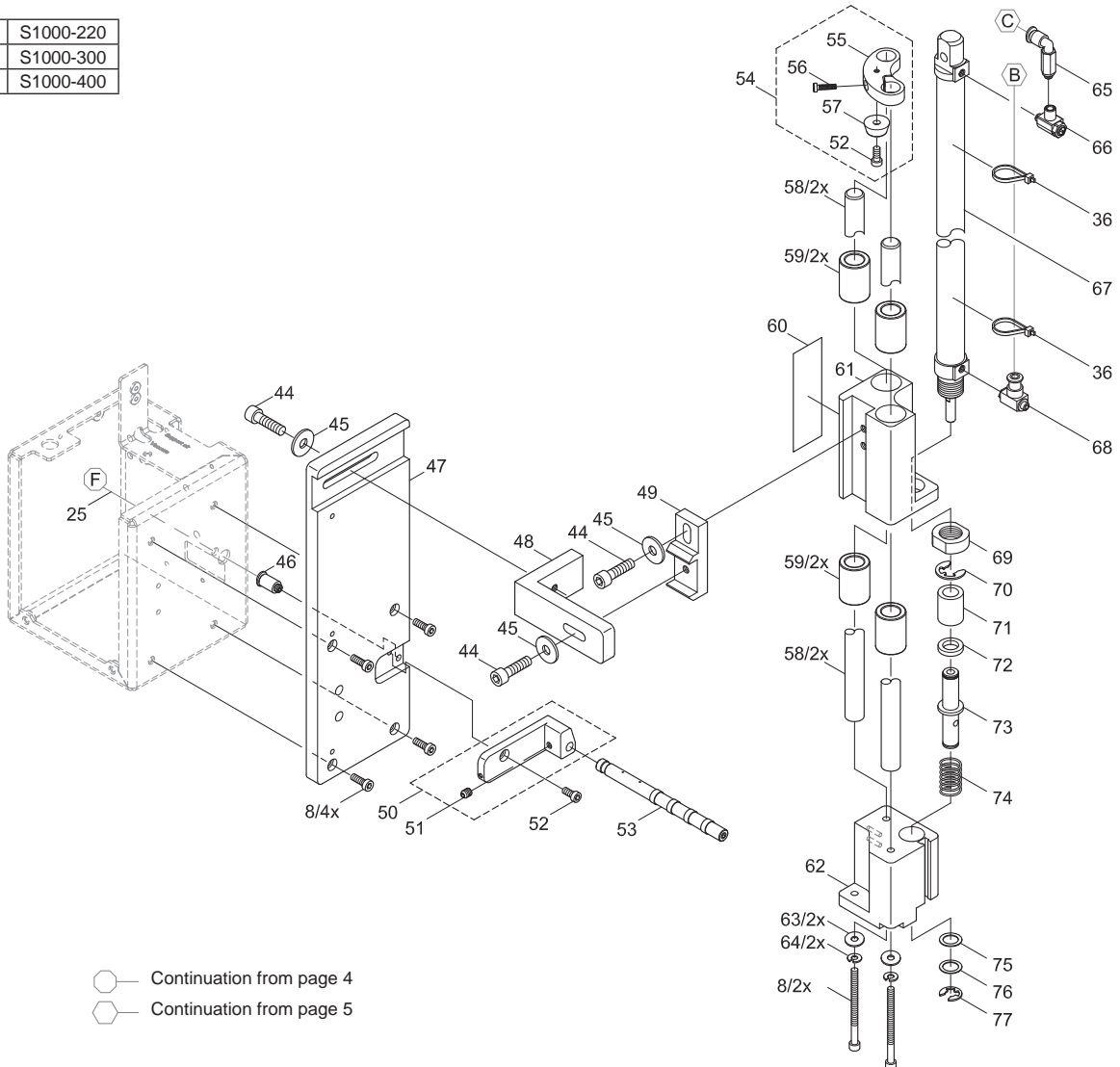
A	S1000-220
B	S1000-300
C	S1000-400



No	Part No.	Description	PU	Note	Serial No.	
					from	to
8	5902449.001	Screw DIN7984-M4x40	10			
25	5966463.001	Tube	2m			
30	5901505.001	Cable Clamp L=102	10			
44	5902262.001	Screw DIN912-M6x18	10			
45	5903040.001	Washer DIN125-A6.4	10			
46	5905283.001	Push-in/threaded Fitting	1			
47	5949140.001	Mounting Plate	1			
48	5949141.001	Bracket	1			
49	5949062.001	Adjusting Plate	1			
50	5949145.001	Blow Tube Retainer	1			
51	5904518.001	Set Screw DIN916-M5x5	10			
52	5902397.001	Screw DIN7984-M4x6	10			
53	5949101.001	Blow Tube	1			
54	5949089.001	Stopper	1			
55	5949088.001	Stopper	1			
56	5902009.001	Screw DIN912-M3x12	10			
57	5905780.001	Foot	1			
58.1	5949171.001	Rod	1	A		
58.2	5949065.001	Rod	1	B		
58.3	5949237.001	Rod	1	C		
59	5905599.001	Ball Bearing	1			

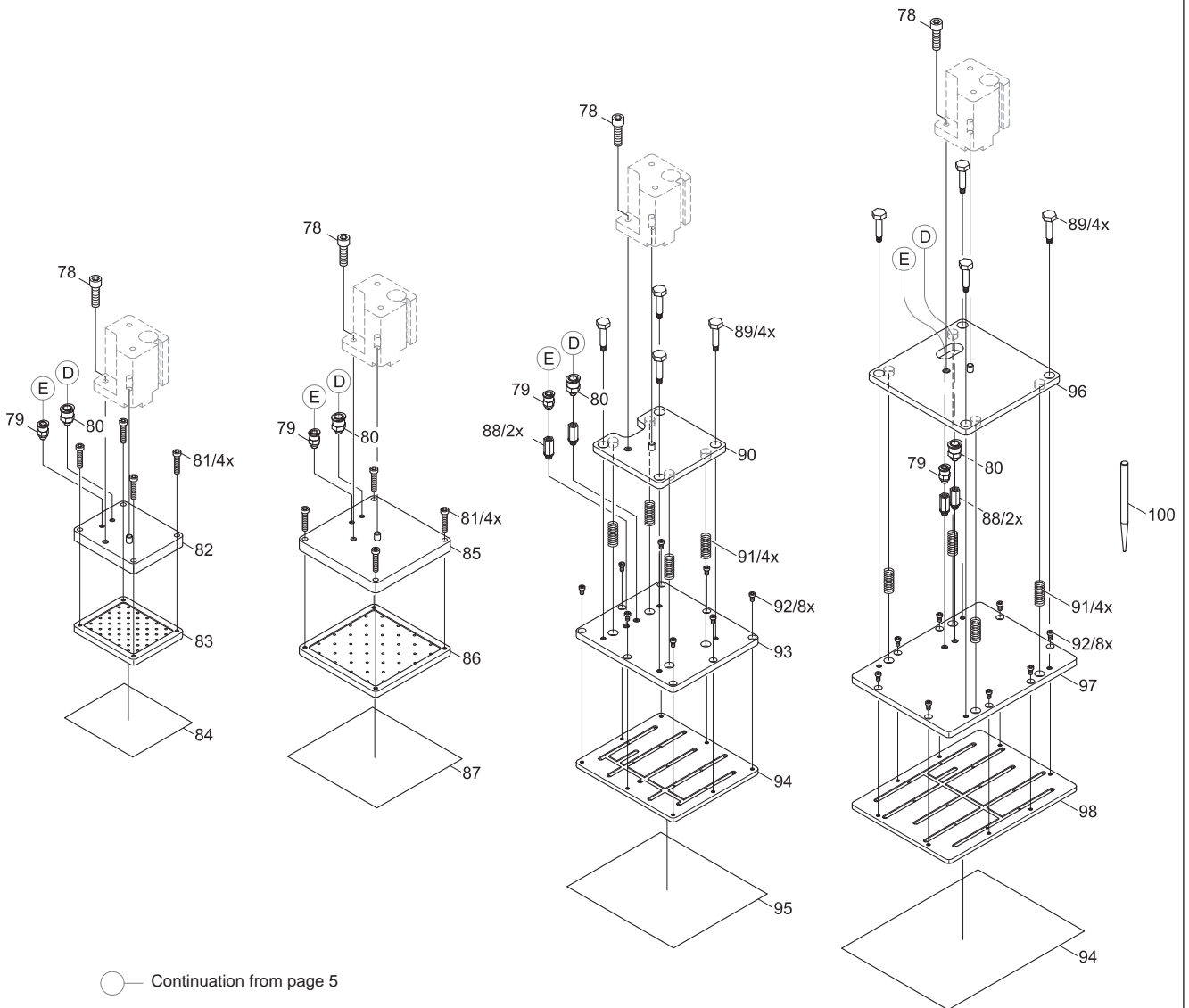
No	Part No.	Description	PU	Note	Serial No.	
					from	to
60	5949079.001	Sliding Foil	1			
61	5949061.001	Guide	1			
62	5949064.001	Tamp Retainer	1			
63	5903003.001	Washer DIN125-A4.3	10			
64	5903029.001	Lock Washer DIN127-B4	10			
65	5905252.001	Push-in L-Connector	1			
66	5905249.001	One-way Flow Control Valve	1			
67.1	5905974.001	Cylinder	1	A		
67.2	5905973.001	Cylinder	1	B		
67.3	5906117.001	Cylinder	1	C		
68	5906636.001	One-way Flow Control Valve	1			
69	5521159.001	Nut	1			
70	5903510.001	E-Ring DIN6799-9	10			
71	5949113.001	Bushing	1			
72	5905602.001	Ring Magnet	1			
73	5949112.001	Adapter Bolt	1			
74	5905069.001	Spring	1			
75	5521158.001	Washer	1			
76	5521157.001	Washer	1			
77	5903501.001	E-Ring DIN6799-7	10			

A	S1000-220
B	S1000-300
C	S1000-400



No	Part No.	Description	PU	Note	Serial No.	
					from	to
78	5902169.001	Screw DIN912-M6x14	10			
79	5905251.001	Push-in/threaded Fitting	1			
80	5905640.001	Push-in/threaded Fitting	1			
81	5902562.001	Screw DIN7984-M4x14	10			
82	5949073.001	Cover Plate	1			
83	5949071.001	Suction Plate	1			
84	5949074.001	Sliding Foil	1			
85	5949133.001	Cover Plate	1			
86	5949134.001	Suction Plate	1			
87	5949135.001	Sliding Foil	1			
88	5905518.001	Pipe Coupling	1			
89	5941017.001	Bolt	1			

No	Part No.	Description	PU	Note	Serial No.	
					from	to
90	5950658.001	Mounting Plate	1			
91	5906100.001	Spring	10			
92	5902144.001	Screw DIN7984-M3x5	10			
93	5950659.001	Cover Plate	1			
94	5950660.001	Suction Plate	1			
95	5950661.001	Sliding Foil	1			
96	5950652.001	Mounting Plate	1			
97	5950653.001	Cover Plate	1			
98	5950654.001	Suction Plate	1			
99	5950655.001	Sliding Foil	1			
100	5949098.001	Piercing Pin	1			



Pos.	Figure/Page				No.	Part No.	Description	PU	SPR				Notes	Serial No.	
									from	to					
1				6	76	5521157.001	Washer	1							
2				6	75	5521158.001	Washer	1							
3				6	69	5521159.001	Nut	1							
4		4	5	6	36	5901505.001	Cable Clamp L=102	10		B	C	D			
5			5		40	5901612.001	Ducting	1							
6	3				16	5902007.001	Screw DIN912-M3x6	10							
7				6	56	5902009.001	Screw DIN912-M3x12	10							
8			5		38	5902021.001	Screw DIN7991-M3x6	10							
9				7	92	5902144.001	Screw DIN7984-M3x5	10							
10				7	78	5902169.001	Screw DIN912-M6x14	10							
11		4			19	5902241.001	Screw DIN7984-M4x10	10							
12				6	44	5902262.001	Screw DIN912-M6x18	10							
13				6	52	5902397.001	Screw DIN7984-M4x6	10							
14	3			6	8	5902449.001	Screw DIN7984-M4x40	10							
15				7	81	5902562.001	Screw DIN7984-M4x14	10							
16	3				34	5902565.001	Screw DIN7984-M4x10	10							
17				6	63	5903003.001	Washer DIN125-A4.3	10							
18				6	64	5903029.001	Lock Washer DIN127-B4	10							
19				6	45	5903040.001	Washer DIN125-A6.4	10							
20				6	77	5903501.001	E-Ring DIN6799-7	10							
21				6	70	5903510.001	E-Ring DIN6799-9	10							
22				6	51	5904518.001	Set Screw DIN916-M5x5	10							
23				6	74	5905069.001	Spring	1							
24		4			37	5905124.001	Adhesive Plate 12.7x12.7	10		B	C	D			
25	3				101	5905130.001	Sealing Ring O-1/4-200	10			C	D			
26				6	66	5905249.001	One-way Flow Control Valve	1							
27				7	79	5905251.001	Push-in/threaded Fitting	1							
28				6	65	5905252.001	Push-in L-Connector	1							
29		4			30	5905257.001	Silencer	1	A	B	C	D			
30				6	46	5905283.001	Push-in/threaded Fitting	1							
31	3				9	5905285.001	Push-in L-Connector	1							
32				7	88	5905518.001	Pipe Coupling	1							
33			5		43	5905593.001	Mounting Clip	1							
34				6	59	5905599.001	Ball Bearing	1							
35				6	72	5905602.001	Ring Magnet	1							
36		4			35	5905603.001	Push-in/threaded Fitting	1							
37				7	80	5905640.001	Push-in/threaded Fitting	1							
38	3				10	5905667.001	Push-in/threaded Fitting	1							
39				6	57	5905780.001	Foot	1							
40		4			24	5905972.001	Push-in Y-Fitting	1							
41				6	67.2	5905973.001	Cylinder	1				D	B		
42				6	67.1	5905974.001	Cylinder	1				D	A		
43				7	91	5906100.001	Spring	10							
44				6	67.3	5906117.001	Cylinder	1				D	C		
45				6	68	5906636.001	One-way Flow Control Valve	1							
46		4			29	5906844.001	Vacuum Generator	1							
47	3				3	5906913.001	Push-in L-Connector	1							
48		4			28	5906914.001	Push-in L-Connector	1							
49		4			32	5906915.001	Push-in T-Connector	1							
50		4			20	5907276.001	Valve Block	1							
51	3				7	5907337.001	Coupling Plug	1							
52	3				6	5907338.001	Block Valve	1							
53	3				4	5907339.001	Filter Regulator	1							
54	3				5	5907340.001	Manometer	1							
55		4			21	5907428.001	Valve	1				D			
56		4			22	5907429.001	Valve	1				D			

PU Package unit
 SPR Recommendation
 Notes A S1000-220
 B S1000-300
 C S1000-400
 A - wearing parts and accessories
 B - recommended spare parts for quick repair
 C - recommended spare parts for distributors
 D - recommended spare parts for central stores

6 Spare Parts Register

9

Pos.	Figure/Page			No.	Part No.	Description	PU	SPR			Notes	Serial No.	
												from	to
57			7	89	5941017.001	Bolt	1						
58		5		39.2	5949033.001	Energy Track	1				B		
59	3			13	5949058.001	Distance Bolt M3x7.5	1						
60			6	61	5949061.001	Guide	1						
61			6	49	5949062.001	Adjusting Plate	1						
62			6	62	5949064.001	Tamp Retainer	1						
63			6	58.2	5949065.001	Rod	1				B		
64			7	83	5949071.001	Suction Plate	1						
65			7	82	5949073.001	Cover Plate	1						
66			7	84	5949074.001	Sliding Foil	1			C	D		
67			6	60	5949079.001	Sliding Foil	1			C	D		
68			6	55	5949088.001	Stopper	1						
69			6	54	5949089.001	Stopper	1						
70			7	100	5949098.001	Piercing Pin	1						
71			6	53	5949101.001	Blow Tube	1						
72			6	73	5949112.001	Adapter Bolt	1						
73			6	71	5949113.001	Bushing	1						
74			7	85	5949133.001	Cover Plate	1						
75			7	86	5949134.001	Suction Plate	1						
76			7	87	5949135.001	Sliding Foil	1			C	D		
77			6	47	5949140.001	Mounting Plate	1						
78			6	48	5949141.001	Bracket	1						
79	3			12	5949144.001	Center Pin	1						
80			6	50	5949145.001	Blow Tube Retainer	1						
81			6	58.1	5949171.001	Rod	1				A		
82		5		39.1	5949173.001	Energy Track	1				A		
83		5		42.1	5949177.001	Sensor	1				A		
84			6	58.3	5949237.001	Rod	1				C		
85		5		41.3	5949238.001	Sensor	1				C		
86		5		39.3	5949239.001	Energy Track	1				C		
87	4			33	5949469.001	Distance Bolt	1						
88			7	96	5950652.001	Mounting Plate	1						
89			7	97	5950653.001	Cover Plate	1						
90			7	98	5950654.001	Suction Plate	1						
91			7	99	5950655.001	Sliding Foil	1			C	D		
92			7	90	5950658.001	Mounting Plate	1						
93			7	93	5950659.001	Cover Plate	1						
94			7	94	5950660.001	Suction Plate	1						
95			7	95	5950661.001	Sliding Foil	1			C	D		
96	4	5		31	5966460.001	Tube	2m		B	C	D		
97	4	5		23	5966461.001	Tube	2m		B	C	D		
98	4		6	25	5966463.001	Tube	2m		B	C	D		
99	4			27	5966464.001	Tube	2m		B	C	D		
100	3	4		2	5966465.001	Tube	2m		B	C	D		
101		4	5	26	5966466.001	Tube	2m		B	C	D		
102			5	41.1	5976127.001	Sensor	1				D	A	
103			5	41.2	5976128.001	Sensor	1				D	B	
104			5	42.2	5976130.001	Sensor	1				D	B	
105			5	42.3	5976131.001	Sensor	1				D	C	
106	3			17	5978945.001	Knurled Screw	1						
107	3			11	5978948.001	Frame	1						
108	3			18	5978950.001	Cover	1						
109	3			15	5978993.001	EEPROM	1						
110	3			14	5978994.001	PCB Control	1			C	D		
111	3			1	5979024.001	Service Unit	1				D		

PU Package unit

Notes

A S1000-220

B S1000-300

C S1000-400

SPR Recommendation

A - wearing parts and accessories

B - recommended spare parts for quick repair

C - recommended spare parts for distributors

D - recommended spare parts for central stores