

Operator's Manual



Demand Module

S5104 / S5106

Family	Type
Demand Module	S5104
	S5106

Edition: 04/2019 Part No. 9003063

Copyright

This documentation as well as translation hereof are property of cab Produkttechnik GmbH & Co. KG.

The replication, conversion, duplication or divulgement of the whole manual or parts of it for other intentions than its original intended purpose demand the previous written authorization by cab.

Editor

Regarding questions or comments please contact cab Produkttechnik GmbH & Co. KG.

Topicality

Due to the constant further development of our products discrepancies between documentation and products can occur.

Please check www.cab.de for the latest update.

Terms and conditions

Deliveries and performances are effected under the General conditions of sale of cab.

Germany
cab Produkttechnik GmbH & Co KG
Karlsruhe
Phone +49 721 6626 0
www.cab.de

USA
cab Technology, Inc.
Chelmsford, MA
Phone +1 978 250 8321
www.cab.de/us

Taiwan
cab Technology Co., Ltd.
Taipei
Phone +886 (02) 8227 3966
www.cab.de/tw

China
cab (Shanghai) Trading Co., Ltd.
Guangzhou
Phone +86 (020) 2831 7358
www.cab.de/cn

France
cab Technologies S.à.r.l.
Niedermodern
Phone +33 388 722501
www.cab.de/fr

Mexico
cab Technology, Inc.
Juárez
Phone +52 656 682 4301
www.cab.de/es

China
cab (Shanghai) Trading Co., Ltd.
Shanghai
Phone +86 (021) 6236 3161
www.cab.de/cn

South Africa
cab Technology (Pty) Ltd.
Randburg
Phone +27 11 886 3580
www.cab.de/za

1	Introduction	4
1.1	Instructions.....	4
1.2	Intended Use.....	4
1.3	Safety Instructions.....	5
1.4	Environment.....	5
2	Product Description	6
2.1	Functionality.....	6
2.2	Technical Data.....	6
2.3	Device Overview	7
3	Operation	8
3.1	External Start Signal	8
3.2	Mounting the Demand Module to the Printer	8
3.3	Insert Material	9
4	Configuration.....	10
4.1	Set up the Labeling Position	10
4.2	Printer Operation.....	10
5	Licences.....	11
5.1	Declaration of Incorporation	11
5.2	EU Declaration of Conformity.....	12

1.1 Instructions

Important information and instructions in this documentation are designated as follows:



Danger!

Draws attention to an exceptionally great, imminent danger to your health or life due to hazardous voltages.



Danger!

Draws attention to a danger with high risk which, if not avoided, may result in death or serious injury.



Warning!

Draws attention to a danger with medium risk which, if not avoided, may result in death or serious injury.



Caution!

Draws attention to a danger with low risk which, if not avoided, may result in minor or moderate injury.



Attention!

Draws attention to potential risks of property damage or loss of quality.



Note!

Advice to make work routine easier or on important steps to be carried out.



Environment!

Gives you tips on protecting the environment.



Handling instruction



Reference to section, position, illustration number or document.



Option (accessories, peripheral equipment, special fittings).

Time

Information in the display.

1.2 Intended Use

- The device is manufactured in accordance with the current technological status and the recognized safety rules. However, danger to life and limb of the user or third parties and/or damage to the device and other tangible assets can arise during use.
- The device may only be used for its intended purpose and if it is in perfect working order, and it must be used with regard to safety and dangers as stated in the operating manual.
- The device applicator mounted on a cab printer of the Hermes+ series is intended exclusively for applying suitable materials that have been approved by the manufacturer. Any other use or use going beyond this shall be regarded as improper use. The manufacturer/supplier shall not be liable for damage resulting from unauthorized use; the user shall bear the risk alone.
- Usage for the intended purpose also includes complying with the operating manual, including the manufacturer's maintenance recommendations and specifications.



Note!

The complete and current version of the documentation can be found in the Internet.

1.3 Safety Instructions**Attention!**

Initiation, adjustments and changing of parts are to be performed by qualified service personnel only.

**Warning!**

This is a class A product. In a domestic environment this product may cause radio interference in which case the user may be required to take adequate measures.

- Before mounting the delivered components disconnect the printer from the power supply and close the shutoff valve of the applicator.
- Only connect the device to other devices which have a protective low voltage.
- Switch off all affected devices (computer, printer, accessories) before connecting or disconnecting.
- In operation, moving parts are easily accessible.
This applies especially for the zone, where the pad is moved between the starting and the labelling position. During operation do not reach into that zone and keep long hair, loose clothes, and jewelry distant. Before any manipulations in those areas, close the shutoff valve.
- The device may only be used in a dry environment, do not expose it to moisture (sprays of water, mists, etc.).
- Do not use the device in an explosive atmosphere.
- Do not use the device close to high-voltage power lines.
- Perform only those actions described in this operating manual.
Work going beyond this may only be performed by trained personnel or service technicians.
- Unauthorized interference with electronic modules or their software can cause malfunctions.
- Other unauthorized work on or modifications to the device can also endanger operational safety.
- Always have service work done in a qualified workshop, where the personnel have the technical knowledge and tools required to do the necessary work.
- There are various warning stickers on the device. They draw your attention to dangers. Warning stickers must therefore not be removed, as then you and other people cannot be aware of dangers and may be injured.

1.4 Environment

Obsolete devices contain valuable recyclable materials that should be sent for recycling.

- ▶ Send to suitable collection points, separately from residual waste.

The modular construction of the applicator enables it to be easily disassembled into its component parts.

- ▶ Send the parts for recycling.

2.1 Functionality

The demand module S5104 / 5106 is a mechanical device to be used with a printer of the SQUIX series in the dispensing mode as P device.

The demand module is conceptualized for the integration into production processes including conveyor systems. The dispensed labels are applied by the pressure roller.

The control over the printer with the configuration printer demand module occurs via the integrated pensent light barrier sensor.

2.2 Technical Data

Technical data	Demand module	
	S5104	S5106
To be used with	SQUIX 4.3, SQUIX 4	SQUIX 6.3
Label width mm	25-116	50-176
Label height mm	25-210	
Distance from print line to peel-off plate mm	336-518	
Product surface	flat	
Product height	fixed	
Product during labeling	in motion, speed synchronized with the printer	
Cycle time approx. ¹⁾	60 labels/min	

¹⁾ Calculated with label height 100 mm, print speed 100 mm/s

2.3 Device Overview

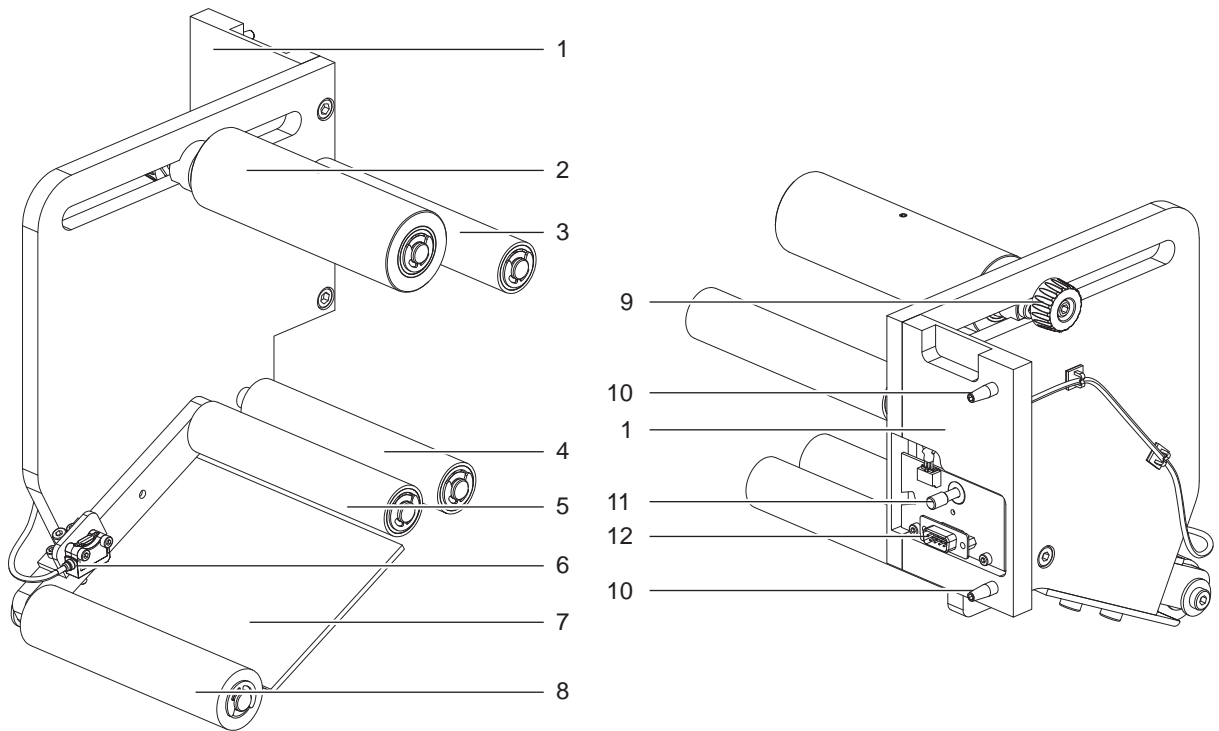


Fig. 1 Device overview

- | | | | |
|---|------------------------|----|---|
| 1 | Mounting plate | 7 | Dispense edge |
| 2 | Belt roller adjustable | 8 | Pinch roller |
| 3 | Belt roller | 9 | Thumbscrew for adjusting the belt roller |
| 4 | Belt roller | 10 | Guide dome for positioning to the printer |
| 5 | Belt roller | 11 | Thumbscrew for fastening to the printer |
| 6 | Sensor | 12 | SUB-D 9 connector for the peripheral interface of the printer |

3.1 External Start Signal

The operation of the printer with demand module requires an external start signal.

- ▶ An example of an external start signal input would be to connect the cab product sensor SPS.
 - ▷ Documentation of the SQUIX.

3.2 Mounting the Demand Module to the Printer



Attention!

- ▶ Disconnect the printer from the electrical outlet before mounting or removing the demand module.

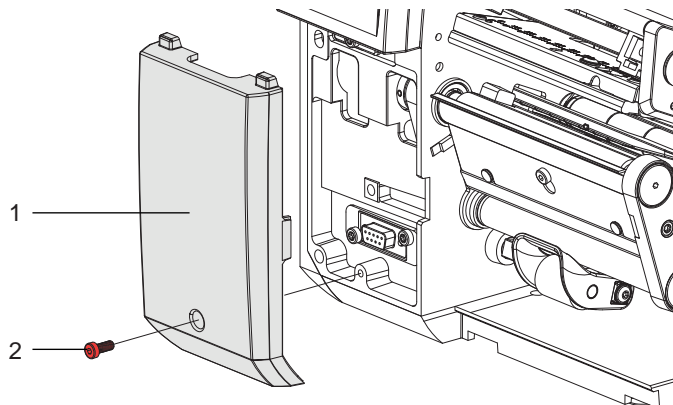


Fig. 2 Mounting the demand module

- ▶ Loosen screw (2) and remove cover (1).

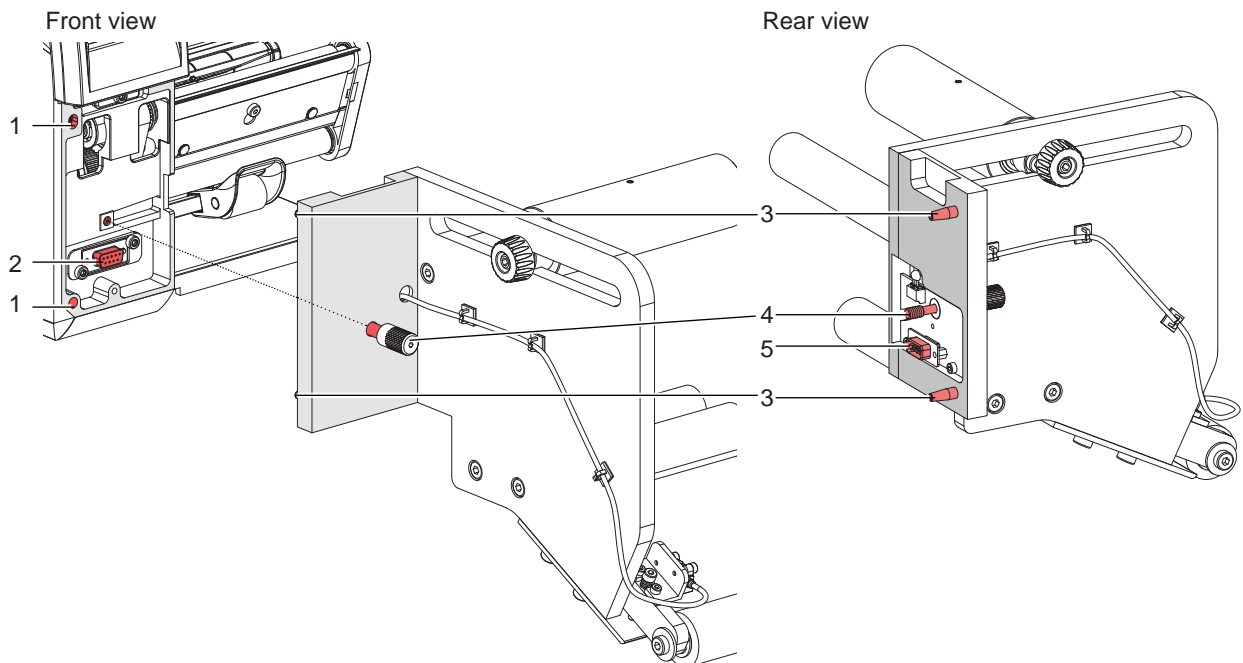


Fig. 3 Mounting the demand module

- ▶ Slide the guide domes (3) of the demand module into the guide holes (1) of the printer.
- ▶ Push the demand module against the printer.
- ▶ The Sub-D9 connector (5) of the demand module must be connected with the peripheral interface of the printer (2)
- ▶ Fasten the demand module to the printer with the thumbscrew (4).

3.3 Insert Material

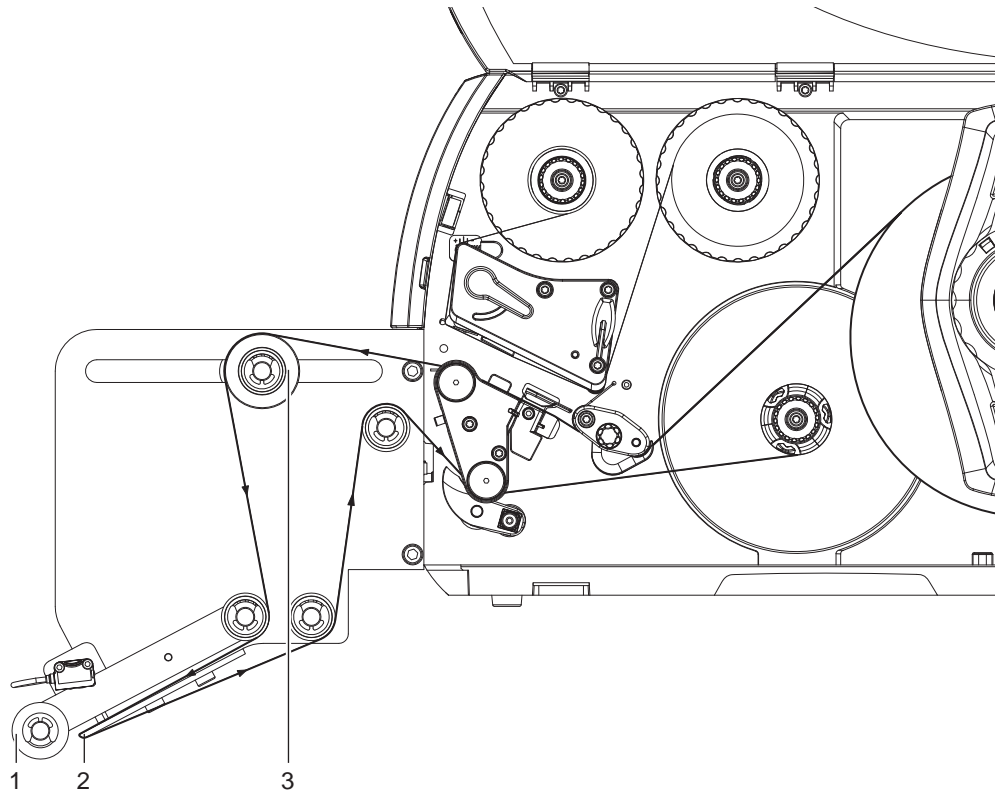


Fig. 4 Material guide - printer and demand module

- ▶ Guide the material according to the dispensing mode of the printer.
- ▶ Pull enough material off the unwinder to guide the material to the rewinder.
- ▶ Remove all labels from the unwound material.
- ▶ Guide the liner through the demand module as illustrated.
- ▶ Continue guiding the liner to the rewinder according the manual of the printer.
- ▶ Set up the dispensing position so that the labels separate from the liner unhindered. These settings need to take into account the the length of the labels and will be described in the coming section.
- ▶ Set the roller (1) via the screw (4) so that the roller lightly comes into contact with the product in order to apply the labels.

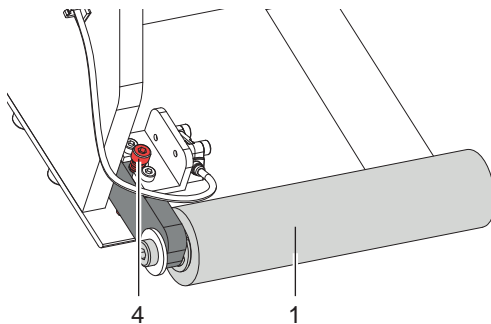


Fig. 5 Setting the roller

4.1 Set up the Labeling Position

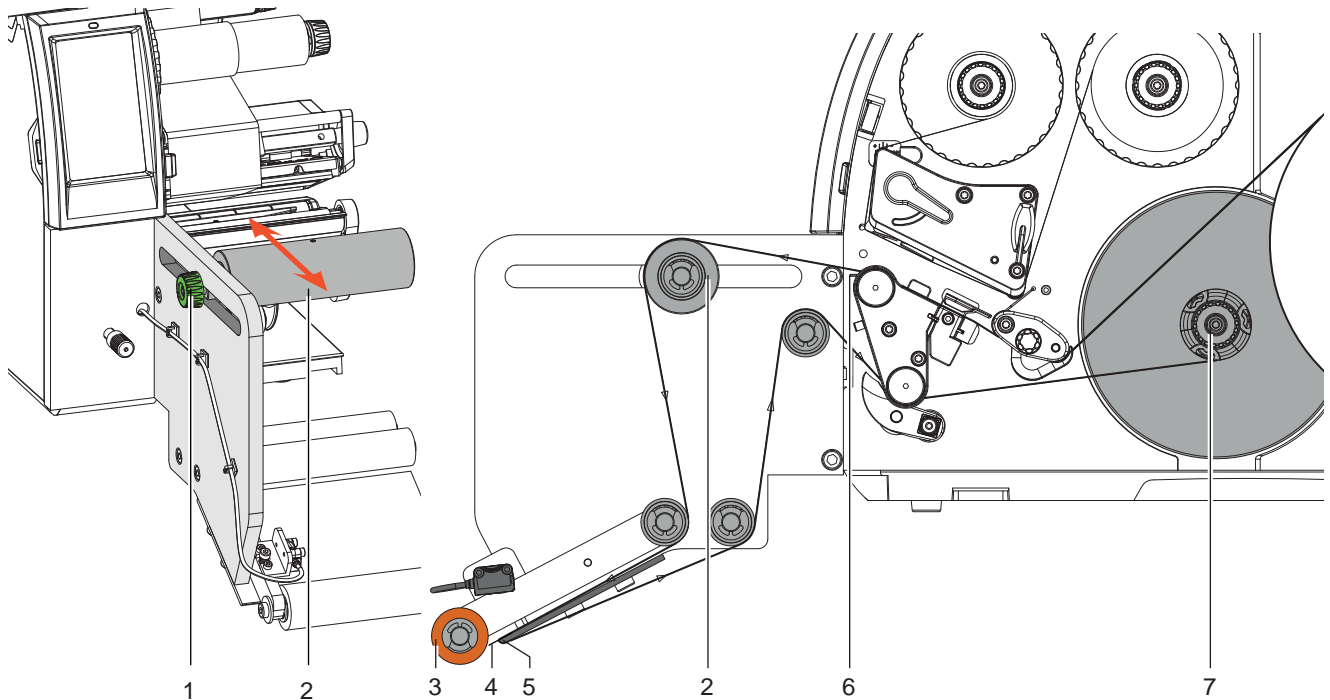



Fig. 6 Labeling position

1. When changing the size of the used labels push the belt roller (2) forward as far as possible, into the printing direction. In order to do this turn the knurled nut (1) counterclockwise to loosed it. Refasten it in the opposite direction.
2. Guide the material, according to the material guide.
3. After inserting the material successfully operate the button FEED  repeatedly until a label reaches the dispensing edge (4).
4. Loosen knurled nut (1) to slowly move roller (6) backward, against the printing direction. At the same time, create tension on the material by turning the rewinder (7). The label should be moved forward towards the dispensing plate until the label detaches from the liner about 5 mm.
5. Fix the roller (6) into place by turning the knurled nut (1) clockwise.

4.2 Printer Operation

1. To access the main menu press .
2. Select *Setup > Printing*.
3. Activate the parameter  *Print on demand*.
4. Within the menu navigate to *Settings > Interfaces > I/O > Start Mode* and set *Edge*.
5. Send a print job.
6. Operate the input repeatedly until a printed label reached the dispensing edge.
7. Start regular printing and labeling operations.



Attention!

Peel-off mode must be deactivated in the software.


▷ Programming Manual - "P command"

5.1 Declaration of Incorporation

**Declaration of Incorporation**

We declare herewith that the following „partly completed machinery“ as a result of design, construction and the version put in circulation complies with the essential requirements of the **Directive 2006/42/EC on machinery**:

In the event of any alteration which has not been approved by us being made to any device as designated below, this statement shall thereby be made invalid.

Device:	Demand Module
Type:	S5104 / S5106
Applied EU Regulations:	Applied Standards:
Directive 2006/42/EC on machinery:	• EN ISO 12100:2010
Person authorised to compile the technical file:	Erwin Fascher Am Unterwege 18/20 99610 Sömmerda
Signed for, and on behalf of the Manufacturer:	Sömmerda, 06.04.2019  Erwin Fascher Managing Director
cab Produkttechnik Sömmerda Gesellschaft für Computer- und Automationsbausteine mbH 99610 Sömmerda	

The product must not be put into service until the final machinery into which it is to be incorporated has been declared in conformity with the provisions of the Directive on machinery.


The documents according annex VII part B from the incomplete machinery are created and will commit to state agencies on request in electronic kinds.

5.2 EU Declaration of Conformity



EU Declaration of Conformity

We declare herewith that the following device as a result of design, construction and the version put in circulation complies with the relevant fundamental regulations of the EU Rules for Safety and Health. In the event of any alteration which has not been approved by us being made to any device as designated below, this statement shall thereby be made invalid.

Device:	Demand Module
Type:	S5104 / S5106
Applied EU Regulations:	Applied Standards:
Directive 2014/30/EU relating to electromagnetic compatibility:	<ul style="list-style-type: none"> • EN 55022:2010 • EN 55024:2010 • EN 61000-6-2:2005
Directive 2011/65/EU on the restriction of the use of certain hazardous substances in electrical and electronic equipment:	<ul style="list-style-type: none"> • EN 50581:2012
Signed for, and on behalf of the Manufacturer:	Sömmerda, 06.04.2019
cab Produkttechnik Sömmerda Gesellschaft für Computer- und Automationsbausteine mbH 99610 Sömmerda	 Erwin Fascher Managing Director