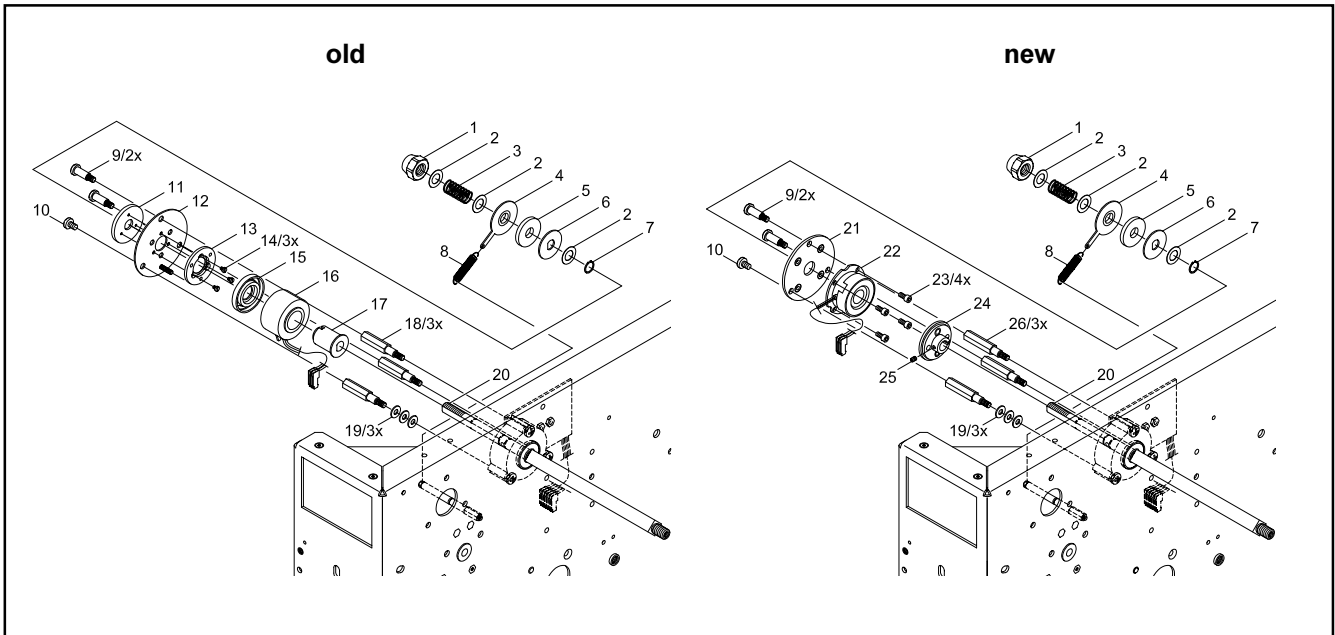


# Transfer Printer Apollo 1

## Mounting Instructions Magnetic Brake Conversion Kit 1 (Part.-No. 5530664)

### Contents of Delivery :

5530663	Mounting Bracket (21)	1
5530660	Magnetic Clutch (22)	1
5902168	Screw DIN912-M3x5-8.8-galZn (23)	4
5917772	Armature 14.100.02.001 DB8 H7/6885 1-P9 (24) with Set Screw (25)	1
5530661	Bolt (26)	3



### Danger to life and limb

Disconnect the printer from the mains connection, otherwise there is a risk to life and limb from the live wires inside the open printer.

### Mounting :

1. Remove the cover.
2. Remove all parts with the position numbers from (1) up to (10). Keep those parts.
3. Unplug the cable of the magnetic brake (16) from the PCB Driver Electronics.
4. Remove the mounting bracket (12) with the washer (11), the spring washer (13) and the screws (14), the friction disc (15), the magnetic brake (16) and the bushing (17). These parts are not any longer needed. Keep the washers (19).
5. Mount the bolts (26). Insert the washers (19) as shown in the figure.
6. Slide the armature (24) onto the axle (20).
7. Fit the magnetic clutch (22) on the mounting bracket (21) using 4 screws (23).
8. Attach the mounting bracket with the magnetic clutch using the screws (9,10).
9. Slide the armature (24) against the magnetic clutch (22), so that a gap of 0.1 mm rests. To measure the gap use a feeler gauge.
10. Fix the armature by tightening the set screw (25).
11. Plug in the cable of the new magnetic clutch in to the socket on the PCB.
12. Mount all parts with the position numbers from (1) up to (10) as shown in the figure.
13. Adjust the torque of the felt clutch at the ribbon unwinder (see Service Manual).
14. Mount the cover.