

Status: 01/2025

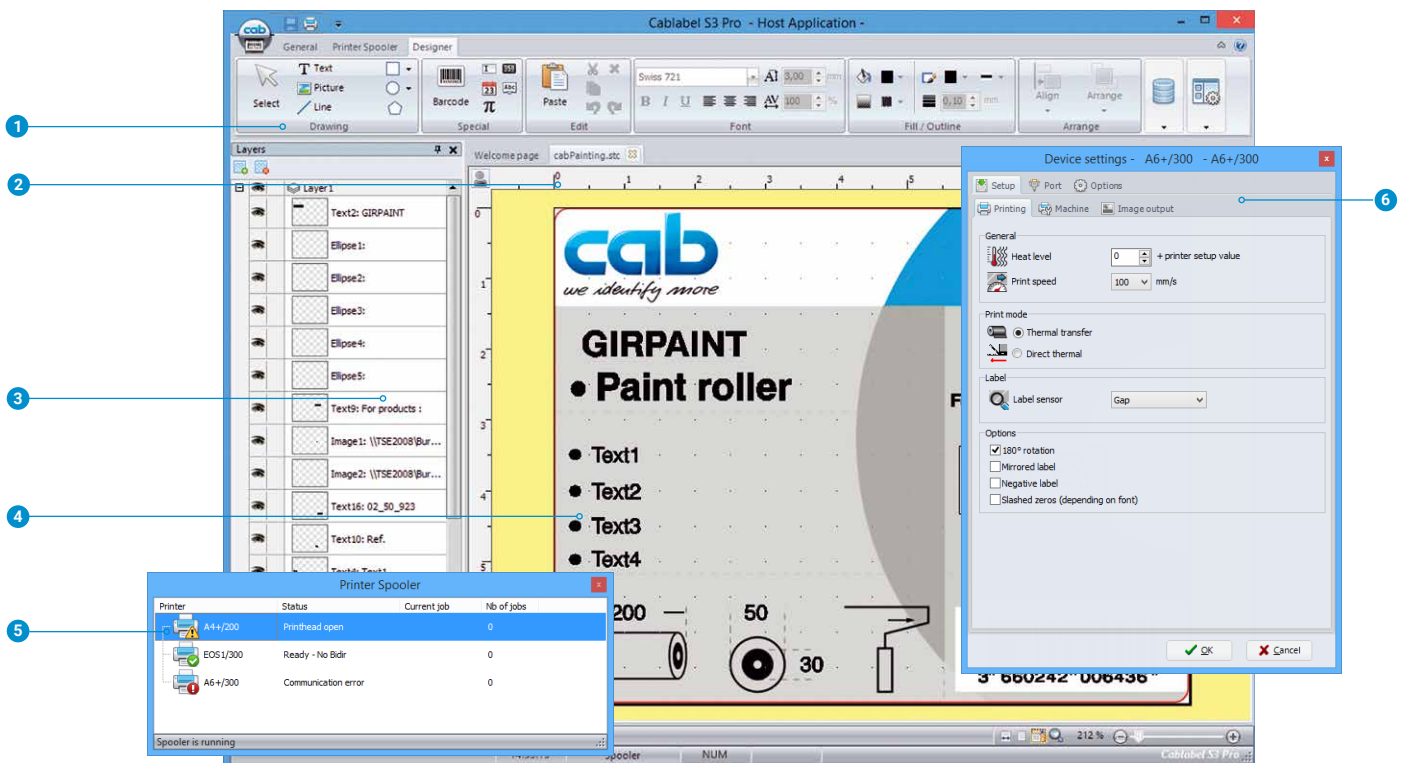


Products need labeling

Label software

cablabel S3

cablabel S3 software



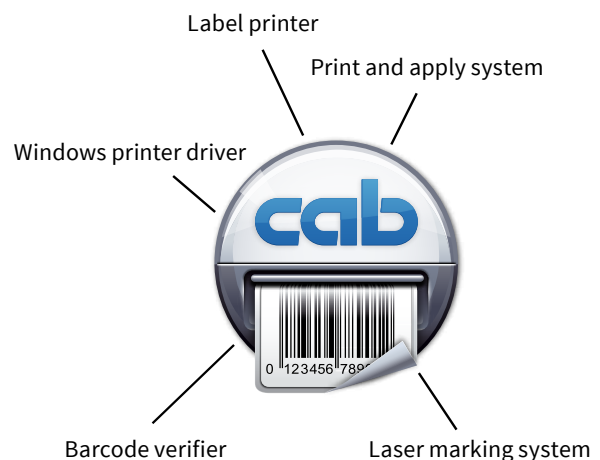
Date formats, mathematical and logic functions are provided by the intuitive user interface.

- 1 **Toolbar**
to create different label objects
- 2 **Tabs**
to quickly switch from one label design to another
- 3 **Layers**
to administrate different label objects
- 4 **Designer**
to simplify layout and display a label in WYSIWYG mode
- 5 **Printer spooler**
to monitor all print jobs and states of a printer
- 6 **Drivers**
to manage settings and the interaction with devices

Design, print, administrate

cablabel S3 opens up the full potential of cab devices.

Defining a label is first. Modular design adapts cablabel S3 to requirements step by step. Plug-ins are embedded. Native JScript programming, for example, is supported by the JScript Viewer. The designer user interface and JScript codes synchronize in real time. Optional features can be integrated, such as the Database Connector or barcode verifiers.



See further information on
www.cab.de/en/cablabel

Supported functions

cablabel S3 unites features like native programming and database connectivity.



JScript

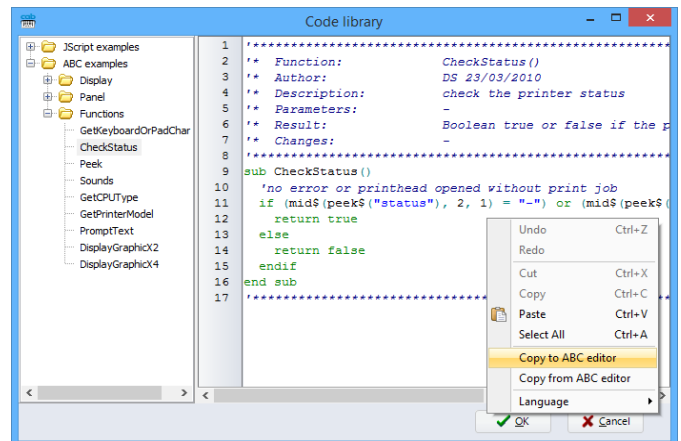
cab printers embed JScript language. As for the import/export of JScript files, cablabel S3 supports native functions. Download free manual on www.cab.de/en/programming

J	Job Start
H 100	Speed (100 mm/s)
O R	Orientation rotated by 180°
S 11;0,0,68,70,100	Size of label (100x68 mm, gap 2 mm)
T 10, 10,0,5,pt20;sample	Text object/font: Swiss bold, 20 pt
B 10,20,0,EAN-13,SC2,401234512345	Barcode EAN 13; size SC 2
G 8,3.5,0;R:30,9,0.3;0.3	Graphic, box 30 x 9 mm, Line weight 0,3 mm
A 1	Number of labels (in this example 1)



abc BASIC Compiler

Integral to the firmware, abc in addition to JScript enables advanced programming before data are edited for printout. For example, external printer languages can be replaced without intervening in a print job in progress. cablabel S3 enables for integrating required components to the program when designing a label.



Connecting to SAP®

Labels can be printed from SAP¹⁾ on cab devices and systems. There are various methods:

- Printing with SAPscript
- Printing with SmartForms
- Printing with Adobe Interactive Forms

See instructions in detail on www.cab.de/en/sap

¹⁾ SAP sowie die dazugehörigen Logos sind Marken oder eingetragene Marken der SAP SE



Database Connector

Printers in a network may access data from a ODBC/OLEDB database and print it on labels. Data can be rewritten to a database while print jobs are in progress. Providing the Database Connector integral to cablabel S3 allows for connecting to a database comfortably when designing a label.

Technical data

Features	Lite	Pro	Print
General			
Operating system	Microsoft Windows 32/64 bit ¹⁾		
Editions	Vista, 7, 8, 8.1, 10, 11 Server 2008, 2008 R2, 2012, 2012 R2, 2016, 2019, 2022		
Processor	2 GHz or higher		
RAM	1 GB (depending on the operating system)		
Memory required	500 MB		
Minimum resolution	1280 x 1024		
Supported languages	CS/DE/EN/ES/FR/IT/KO/PL/RU/ZH		
Label design	■	■	-
Label printing	■	■	■
Features			
cab standard label templates	■	■	-
Layer management	■	■	-
TrueType fonts	■	■	■
Unicode	■	■	■
WYSIWYG	■	■	■
User interface with wizards	■	■	-
Text alignment	■	■	-
Multi-line text adapted line pitch	■	■	■
(paragraphs) adapted to widths and hyphenation according to a language	-	■	■
Mixed styles within an input box	-	■	■
Background image or color	■	■	■
Prompts free	■	■	■
input mask, list of choices, compounds provided	-	■	■
Dates and times with offsets and format helpers	-	■	■
Counters simple (numeric, steps of ± 1)	■	■	■
advanced (numeric, alphabetic, alphanumeric, hex, incremented and free frequency)	-	■	■
Calculation and formatting formulas, information variables	-	■	■
Management of abc interpreter and code library	-	■	-
Viewing and interacting with the printer display ²⁾	■	■	■
Viewing JScript code	-	■	-
Barcodes			
Linear	2/5 entrelacé, Codabar, Code 39, Code 93, Code 128, DBP, EAN 8, JAN 8, EAN 13, JAN 13, EAN/UPC AddOn 2, EAN/UPC AddOn 5, FIM, HIBC, ITF 14/SCC 14, MSI, Plessey, Postnet, PZN, UPC A, E, E0		
Composite	Codablock F, RSS14, GS1 Databar Expanded		
2D	Aztec, Datamatrix, DotCode, Maxicode, MicroPDF417, Micro QR, PDF417, QR		
Wizard provided	-	EAN 18, GS1-128, GS1 Datamatrix, Datamatrix (FACT), PDF417 (FACT), QR	
Verification of printing ³⁾	-	■	■
Database			
OleDb, ODBC, ASCII	-	■	■ ⁴⁾
SQLite	-	■	■ ⁴⁾
Database Connector	-	■	■ ⁴⁾
Query editor	-	■	-
Multiple tables and databases	-	■	■ ⁴⁾
Import/export			
Graphic import Raster (bmp, emf, gif, ico, img, jpg, pcx, png, tif, wmf)	■	■	-
Vector (dwg, dxf, hppl, plt, svg)	-	■	-
Print to file	-	■	-
Label export to png	-	■	-
Label export to PDF	-	■	-
Import of JScript files (.lbl)	-	■	-
Printing			
Interfaces	serial, parallel, USB, Ethernet		
Number of native printers	unlimited		
Printer spooler	■	■	■
Bidirectional interaction	■	■	■
Stand-alone mode	■	■	■
Windows drivers	-	■	■

¹⁾ Terminal servers/Citrix are not supported

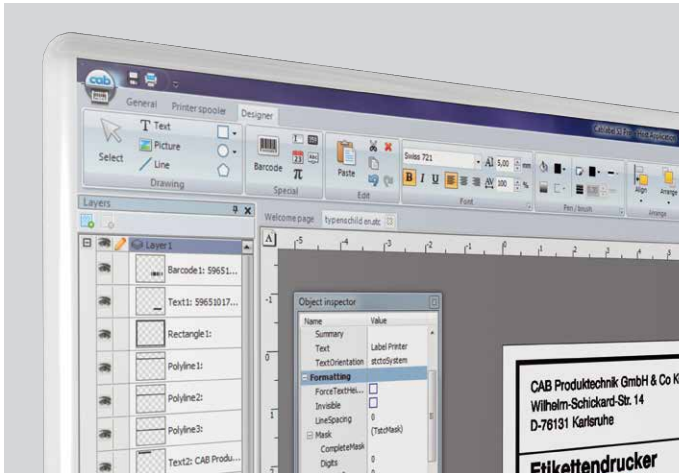
²⁾ depending on the printer model and the interface in use

³⁾ in conjunction with a CC200 barcode verifier

⁴⁾ Queries only

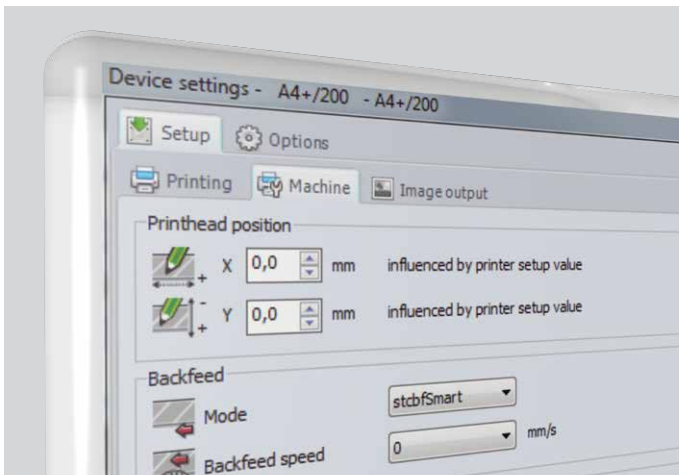
cablabel S3

Designer



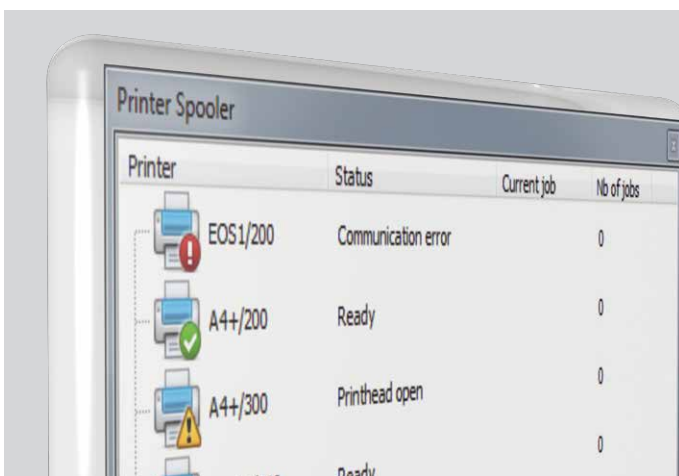
You design a label. The display corresponds to its printing (WYSIWYG). You define texts, graphics, barcodes and insert variable data in date prompts or counters, maybe using a database connected. You adapt the design to your print requirements using formulas, string formatting or logical commands. Layers allow managing a label. For example, you assign a barcode to several layers and assign a resolution to each layer. By this, a barcode is automatically printed in the correct resolution. Activating or locking a layer requires only a single click.

Hardware management



You install the required device drivers or adjust the settings and the interaction with devices connected.

Printer spooler



It monitors all printers and displays their states. Print jobs are saved if interrupted, new ones are added automatically.

cablabel S3 Viewer

cablabel S3 Viewer previews a label in the Windows Explorer. The Viewer may support for example in approval processes, as well with supplier requirements. Free download on the cab homepage

cablabel S3 Lite

cablabel S3 Lite allows for managing all cab printers, creating and printing simple labels. Fixed data blocks, barcodes or images may be inserted, counters and prompts be managed for stand-alone operation. Free download on the cab homepage

cablabel S3 Demo

cablabel S3 Demo enables installing and testing cablabel S3 Pro software for free for a maximum of 30 days (JScript viewer is excluded, stand-alone mode is not supported). Printing is limited for testing.

Download on www.cab.de/en/information/contact/?demo



With **cablabel® S3 Pro** you create label designs for professional industrial sector and develop solutions for your label printing.

cablabel® S3 Demo enables interested users to install and to test the software for free. All functions of the Pro-product are available, except the JScript viewer and the support for stand alone mode. Printing is also possible, but limited only for testing. The use is limited during 30 days and for one activation.

If you want to try cablabel S3 Pro 30 days for free please download the demo version and request the activation code.

1. Download demo version

> [cablabel S3 Demo \(55 MB\)](#)

cablabel S3 Pro

cablabel S3 Pro is the most comprehensive version of the software. It is possible to create labels for the professional industrial sector and develop your own label printing solutions, to add all kinds of texts, barcodes or images, whether fixed or variable. Date and time, advanced counters and prompts, mathematical or logical formulas may be as well inserted. Data maybe based also on a database compatible with ODBC/OLEDB. cablabel S3 Pro helps with creating labels compliant to international business-specific regulations such as GHS, allergens, etc.

Special features such as the Database Connector or barcode verification can be integrated as intended.

Thanks to the availability of Windows drivers, cablabel S3 Pro manages printing on any type of printer.

cablabel S3 Pro can be provided for use on a single or on multiple workstations and requires software activation.

cablabel S3 Print

cablabel S3 Print has been developed for operators in manufacture or warehouse. Labels created with cablabel S3 Lite or cablabel S3 Pro software can be accessed and printed. The simplified user interface provides only functions necessary for label printing. Labels selected from a list are displayed for visual control. Then you enter variable data and the quantity to be printed. Your work is simplified, sources of errors are reduced.

There are three ways to access a label:

- Manually (**Standard** mode)
- By dialog box (**AutoLabel** mode)
- Automatically (**AutoFile** mode)

Printer settings may be as well loaded from a database, such are

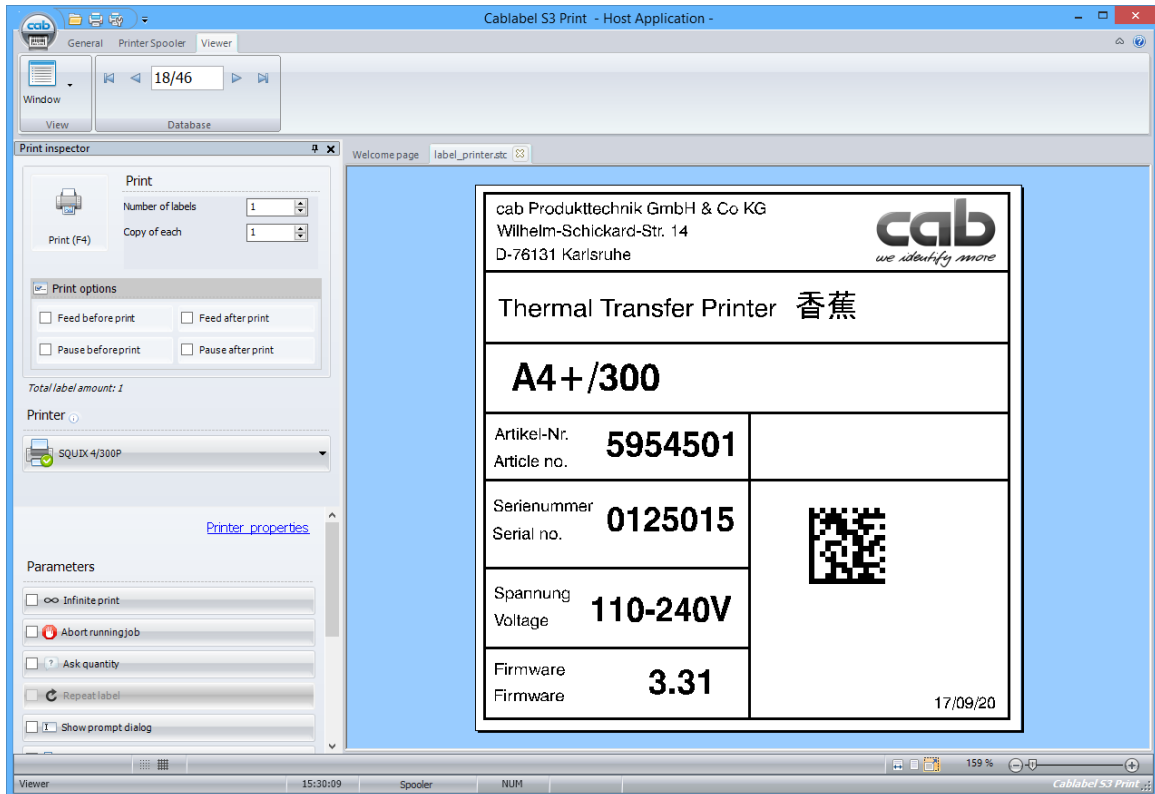
- printing quantities,
- selections of printers,
- warning messages.

A "Print Configurator" is delivered with each cablabel S3 Print version.

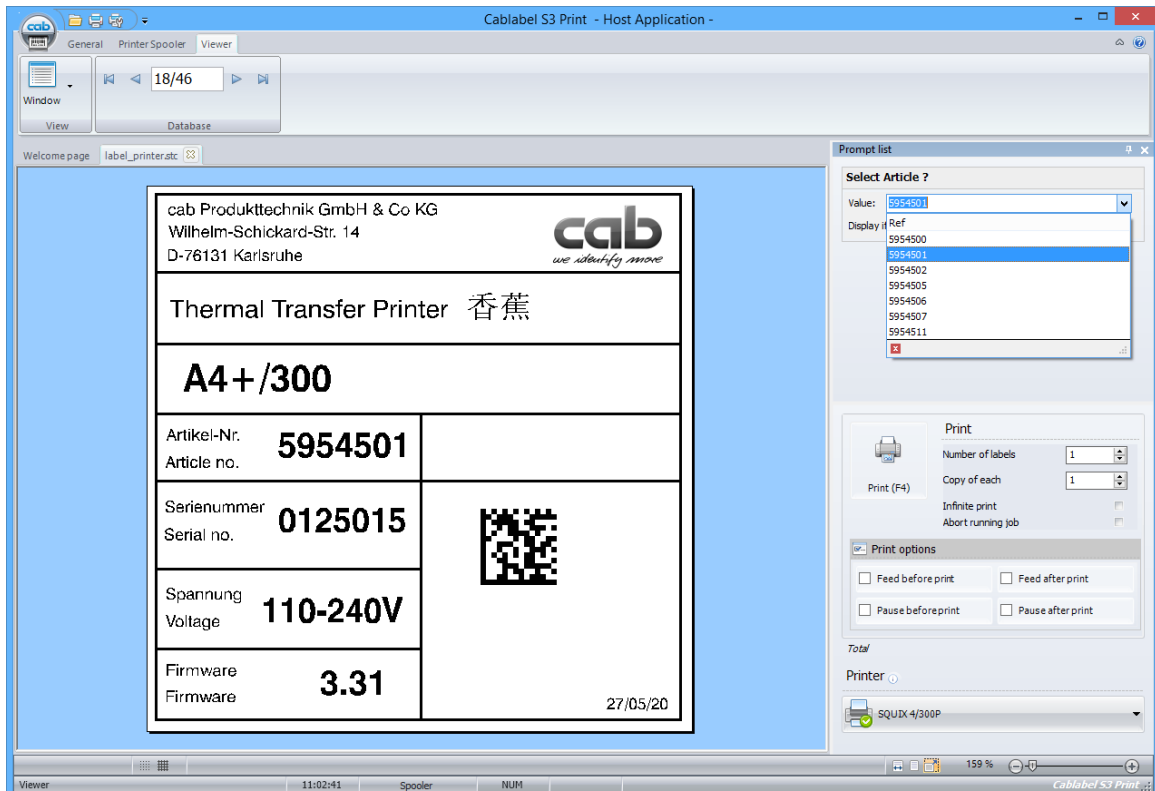
Manual access: **Standard** mode

The operator selects a label. It is displayed. The user fills in the prompts and print quantity, before printing starts on a selected device.

Manual access can be used also in other modes when printing occasionally.



Classic printing

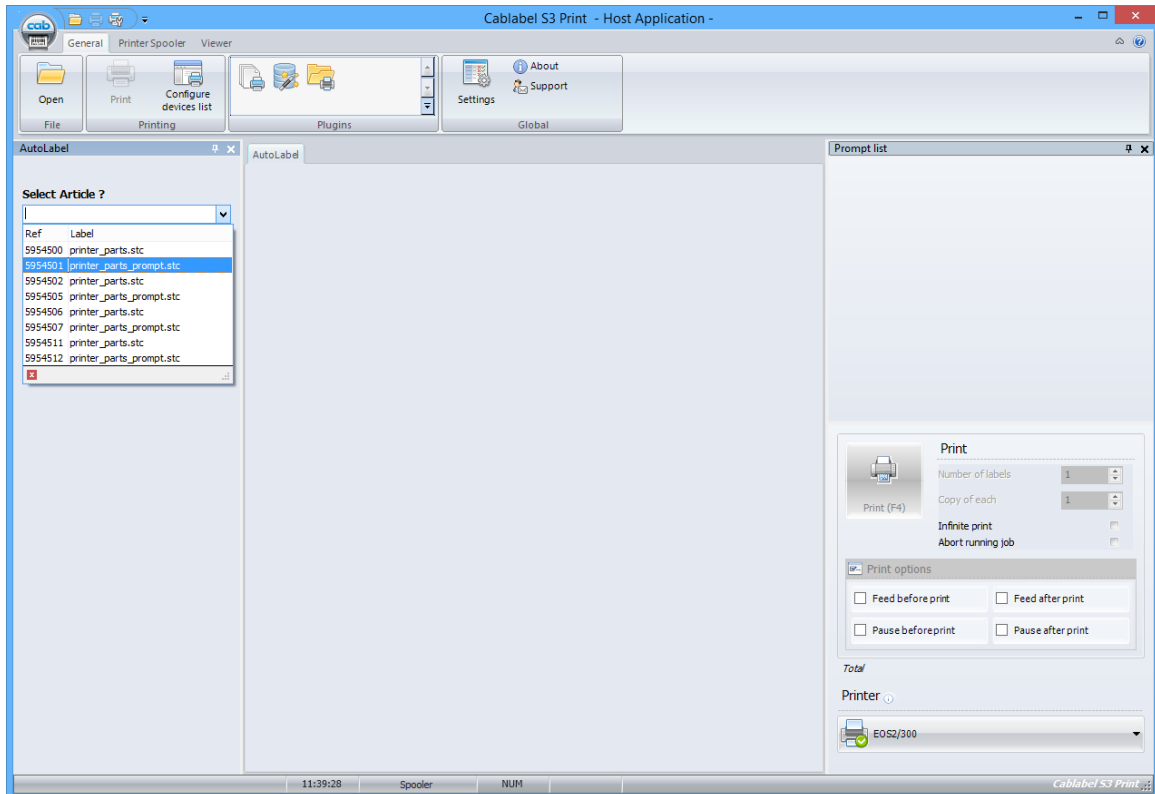


Printing by prompts

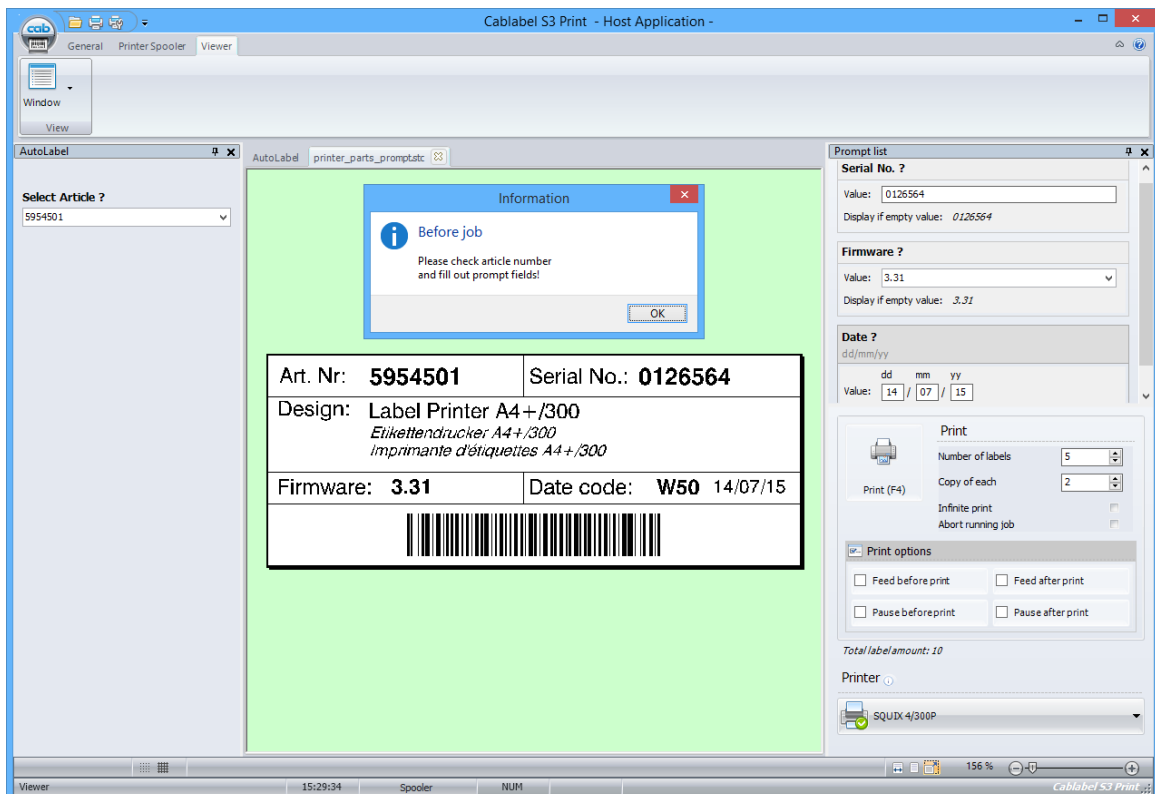
Access by dialog box: **AutoLabel** mode

The operator selects, for example, an article number from a preset choice list. The label is automatically loaded, so are all the associated print settings. If required, the operator may change the prompts and print quantity, before printing starts on a selected or preset device.

A database with the printing information is required (fields for choice list, label filename. etc.)



Selection from a choice list

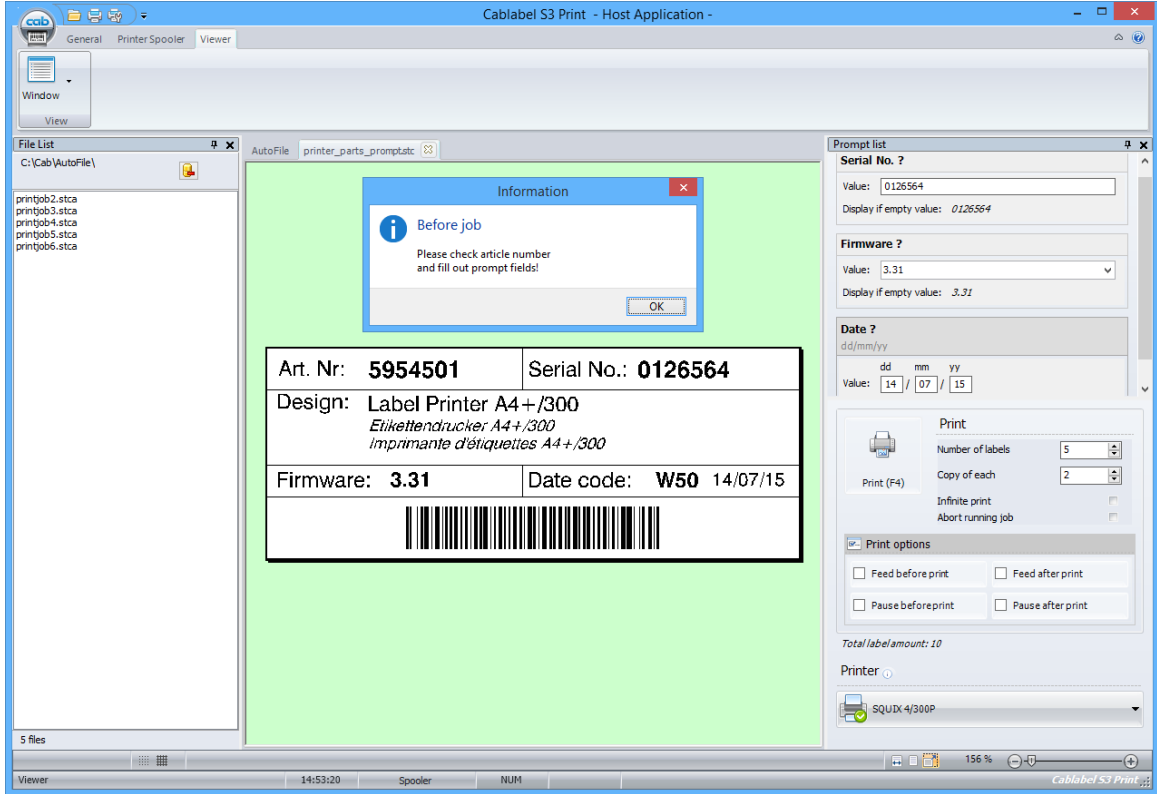


Display of a label and print settings for selection

Automatic access: **AutoFile** mode

The A label specified in a print file is automatically opened by a task list and printed. The next label on the list is accordingly handled. After a visual check, the operator, if required, may change the prompts and print quantity, before printing starts on a selected or preset device.

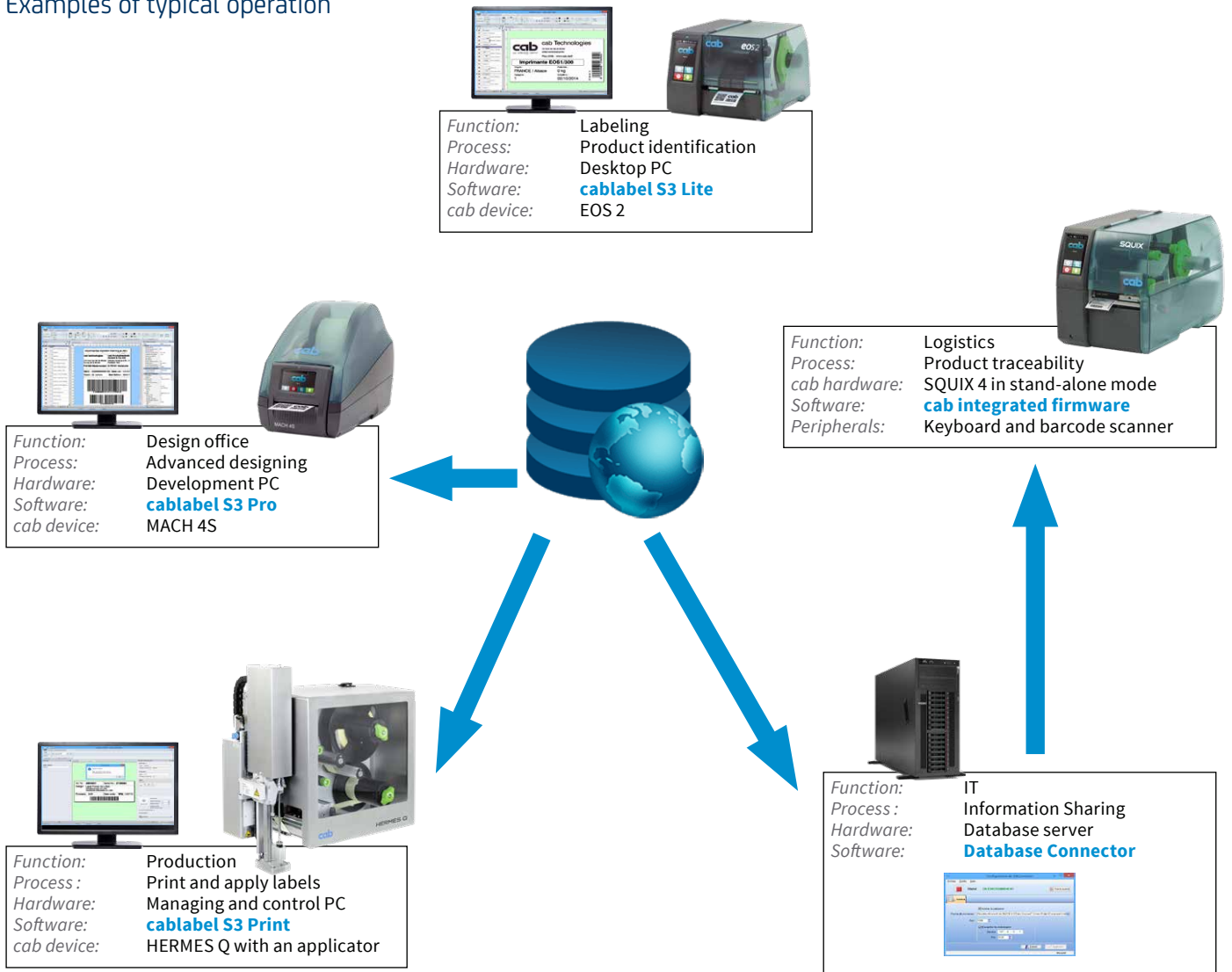
Print files from a tasks list hold all needed print settings. They can be set using an ERP or any other tool capable of generating a compatible text file. New values may be assigned to objects as well (like a "Replace" file).



Display of print files, a label to be printed and print parameters

Software adapted to any need

Examples of typical operation



Delivery program

Position	Item no.	Designation	Type of license
1	5588000	cablabel S3 Lite	Bundle
2	5588009	cablabel S3 Demo	Softkey, 30 days
3	5588001	cablabel S3 Pro 1 workstation	Softkey
	5588100	5 workstations	
	5588101	10 workstations	
	5588150	1 additional license	
	5588151	4 additional licenses	
4	5588152	9 additional licenses	Softkey
	5588002	cablabel S3 Print 1 workstation	
	5588105	5 workstations	
	5588106	10 workstations	
	5588155	1 additional license	
	5588156	4 additional licenses	
	5588157	9 additional licenses	
	5588158	14 additional licenses	
	5588159	24 additional licenses	

Overview of cab products

Label printers
MACH1, MACH2



Label printers
EOS 2



Label printers
EOS 5



Label printers
MACH 4S



Label printers
SQUIX 2



Label printers
SQUIX 4



Label printers
SQUIX 6.3



Label printers
SQUIX 8.3



Label printers
XD Q double-sided



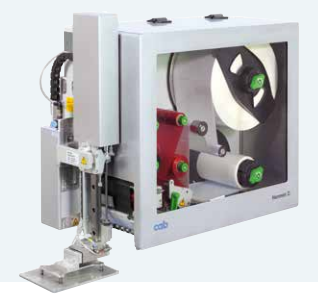
Label printers
XC Q two-colored



Print and apply systems
HERMES Q



Print and apply systems
Hermes C two-colored



Tube labeling systems
AXON 1



Print modules
PX Q



Labels and ribbons



Label software
cablabel S3



Label dispensers
HS, VS



Labeling heads
IXOR



Marking lasers
XENO 4



Laser marking systems



Germany

cab Produkttechnik GmbH & Co KG

Karlsruhe

Phone +49 721 6626 0

www.cab.de

France

cab Technologies S.à.r.l.

Niedermodern

Phone +33 388 722501

www.cab.de/fr

USA

cab Technology, Inc.

Chelmsford, MA

Phone +1 978 250 8321

www.cab.de/us

Mexico

cab Technology, Inc.

Juárez

Phone +52 656 682 4301

www.cab.de/es

Taiwan

cab Technology Co., Ltd.

Taipei

Phone +886 (02) 8227 3966

www.cab.de/tw

China

cab (Shanghai) Trading Co., Ltd.

Shanghai

Phone +86 (021) 6236 3161

www.cab.de/cn

Singapore

cab Singapore Pte. Ltd.

Singapore

Phone +65 6931 9099

www.cab.de/en

South Africa

cab Technology (Pty) Ltd.

Randburg

Phone +27 11 886 3580

www.cab.de/za

cab // 820 distribution and service partners in more than **80** countries

