

# Off-cut Remover HEKTOR 2



Hektor separates milled PCBs carefully and fast. The off-cut material is removed smoothly and precisely. The matrix consists of two parts. This ensures easy and cost-saving change of the blades. Compressed air is used for the separation process. The operating pressure can be set on the machine. When the foot switch is pressed, the off-cut is punched out. The off-cuts are collected in the collecting box. When the gate is opened the waste material can be extracted.

### Safe Operation

The PCB is slipped with its milled groove over the blade and is placed onto the matrix. The off-cut is pulled under the blade. When the foot switch is pressed, the off-cut is punched out and the waste material is collected inside the machine.

Part No.	Description
<b>8932145</b>	<b>Off-Cut Remover Hektor 2</b> Contents of delivery: Hektor 2 with air pressure regulator Foot switch Adapter for dust extraction 1 L-blade – Please choose the size

Technical data	
Separation type	Punch blade
PCB thickness	max. 2.5 mm
Air connection	1/4"-plug-in coupler
Operating pressure	typical 4 bar
Mains voltage	10 - 35° C
Storage/transport temperature	-20 - 50° C
Humidity, non-condensing	10 - 85%
Safety regulations	CE, FCC class A
Weight	2.7 kg
Dimensions H x W x D	170 x 220 x 255 mm



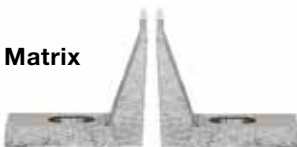
### T-Blade

With the T-blade off-cuts can be punched out right and left of the blade without turning the PCB.



### L-Blade

The L-blade will be used if there are small distances between the off-cuts.



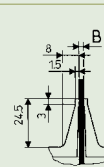
### Matrix

Included in delivery.

### Blades

To ensure the blade will not be jammed in the PCB, the blade should be at least 0.15 mm smaller as the milled groove.

Part No.		A	B	C	D	E	F	G
<b>8932137.001</b>	Blade 1.5 T	≥1.5	1.35	17.2	4.7	>19.0	>19.0	3.0
<b>8932138.001</b>	Blade 2.0 T	≥2.0	1.85	17.2	5.2	>19.0	>19.0	3.0
<b>8932191.001</b>	Blade 2.4 T	≥2.4	2.25	18.0	5.7	>19.0	>19.0	3.0
<b>8932139.001</b>	Blade 2.5 T	≥2.5	2.35	18.0	5.7	>19.0	>19.0	3.0
<b>8932144.001</b>	Blade 3.0 T	≥3.0	2.85	18.0	5.7	>19.0	>19.0	2.5
<b>8932122.001</b>	Blade 1.5 L	≥1.5	1.35	12.0	4.7	>15.0	>13.0	3.0
<b>8932123.001</b>	Blade 2.0 L	≥2.0	1.85	12.0	5.2	>15.0	>13.0	3.0
<b>8932141.001</b>	Blade 2.4 L	≥2.4	2.25	12.0	5.7	>15.0	>13.0	3.0
<b>8932124.001</b>	Blade 2.5 L	≥2.5	2.35	12.0	5.7	>15.0	>13.0	3.0
<b>8932125.001</b>	Blade 3.0 L	≥3.0	2.85	12.0	5.7	>15.0	>13.0	2.5



Blades with varying thickness on request.

