

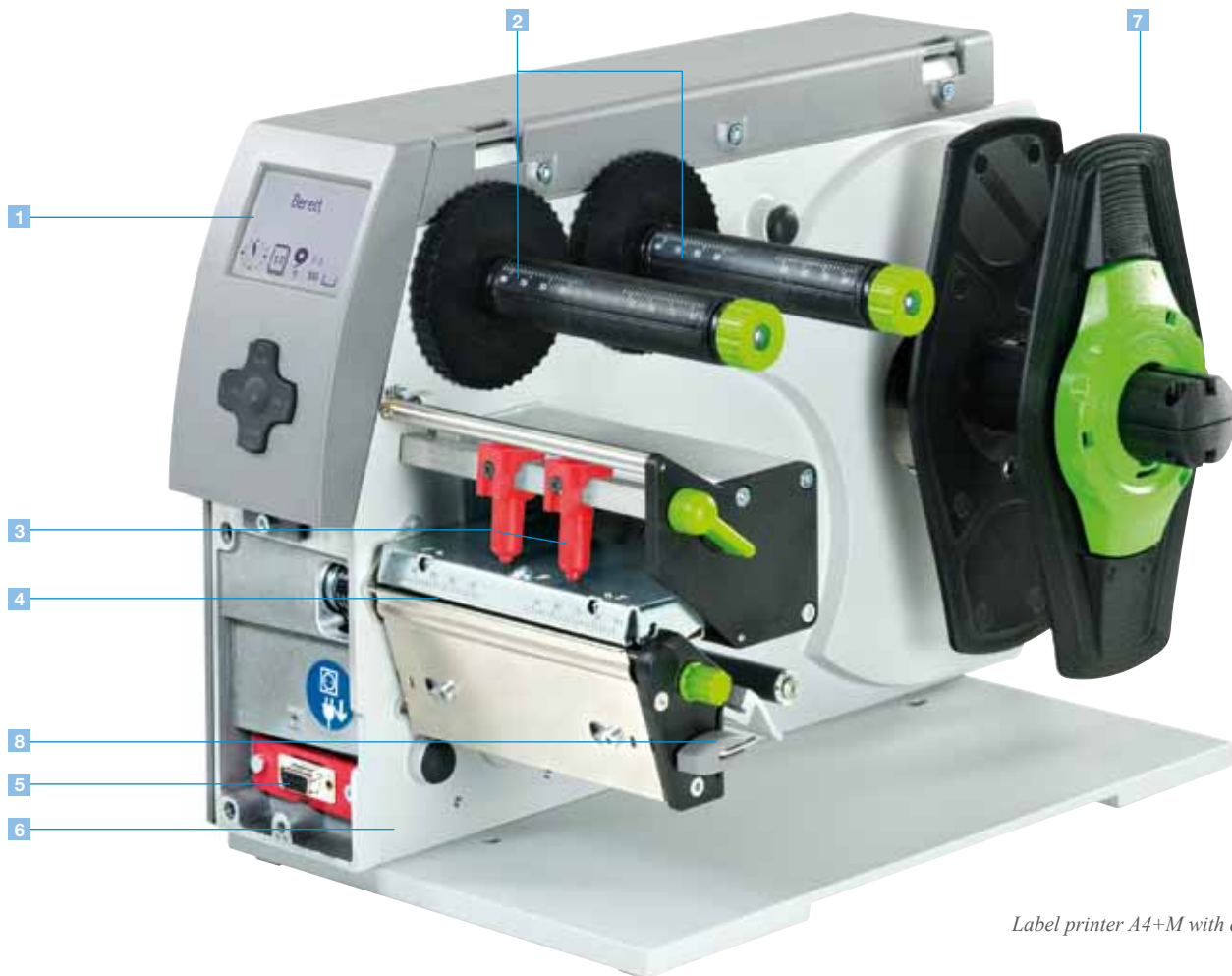


a4+M Label Printer With Centered Material Guide.

Made in Germany.

Technical details.

- › No adjustment of the print head for different widths of material.
- › Printing on very narrow or very thick continuous materials.
- › The gap height at the material sensor for flat tubes and synthetic tapes is up to 4 mm.
- › The print speed for difficult printable materials is reduced to 30 – 125 mm/sec.
- › Operation and software are compatible with the A+ series.



Label printer A4+M with centred material guide

1 Big graphic display

White backlight for optimum readability.

2 Ribbon holder

Three-part tightening axles enable quick and easy ribbon exchange.

3 Straightforward adjustment

The printhead is pressed down with two sliding toggles. One is mounted to the left label margin, the other one is pushed to the right label margin.

4 Peel-off option

The label is removed from its liner via a peel-off plate. A high printing and dispensing accuracy can be achieved with the additionally powered rewind assist roller and the pinch roller.

5 Peripheral connection

Add-on modules such as cutters, external rewinders, present sensors and applicators are easy to connect via the USB peripheral interface. All peripherals are connected to the printer in seconds using two pins and fixed in place with a screw.

6 Solid metal housing

Made of die-cast aluminum. All components are mounted on it.

7 Roll holder

Available for core diameters from 38 mm. (We provide adapters for core diameters wider than 76 mm for improved label winding). The spring-mounted margin stop

ensures constant tension during feeding, thus ensuring a highly precise imprint.

8 Internal rewinder

The three-part tightening axles ensure the easy rewinding and removing of labels or liners with or without paper core.

9 Only one tool for all maintenance tasks




For exchanging wear parts and connecting peripherals, the Allen key is located ready to hand at the printer.



All required interfaces.

- 1 RS232C interface.
- 2 USB 2.0 slave interface.
- 3 Ethernet 10/100 Base T interface with TCP/IP.
- 4 Slot for wireless LAN card.
- 5 Two USB Master interfaces for connecting an external operation panel, keyboard, scanner or service key.
- 6 Slot for CompactFlash Type I memory card.

Options

-  > Centronics bi-directional interface acc. to IEEE 1284.
RS422/RS485 interface 1,200 up to 230,400 Baud/8 Bit.
The interfaces are plugged into the PC.
Connection to the printer via mini USB connection cable.
-  > Label selection – I/O box.
Up to 16 different labels can be loaded via PLC from a memory card. Operation of four inputs/outputs via Basic Interpreter.
-  > cab WLAN card 802.11 b/g.



Stand-alone operation.

Printing with a cab printer without a PC.

The layout of the labels is created either using label software or through direct programming via a text editor on the PC. Label formats, fonts and graphic data, serial data and database contents are saved or imported on the CF memory card, USB flash drive or the internal IFFS printer memory.

Only variable data is sent to the printer via keyboard or host computer before being printed out. Data from a barcode scanner or a balance can also be received by the printer.

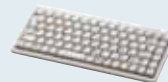


Accessories for stand-alone operation



Memory card

CompactFlash Type I



Compact keyboard

Connection: USB, number of keys: 86
L x W mm: 282 x 132
Cherry G84-4100

Device functionality and compliance with CE standards are only warranted by using the accessories provided or recommended by cab.

Software tools.

Direct programming with J-Script

The printer language is easy to understand and simple to integrate into your host system. Variable data is linked with host applications. Label design, graphic data and fonts are recorded on the CompactFlash card. The host computer sends only variable data to the printer.

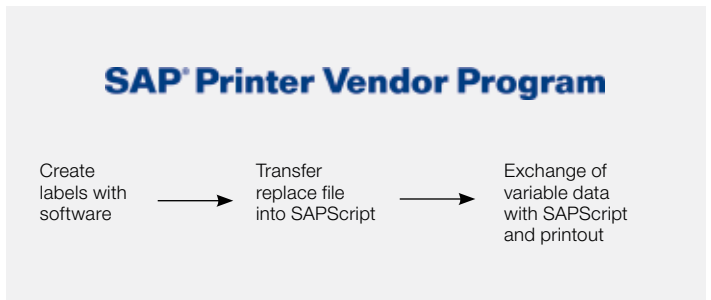
```
J
H 100
O R
S I1;0,0,68,70,100
T 10, 10,0,5,pt20;sample
B 10,20,0,EAN-13,SC2,401234512345
G 8,3.5;0;R:30,9,0,3;0:3
A 1
```

Job start
Speed (100 mm/s)
Orientation rotated by 180°
Size of label (100x68 mm, gap 2 mm)
Text object/font: Swiss bold, 20 pt
Barcode EAN 13, size SC 2
Graphic, box 30 x 9 mm,
Line strength 0.3 mm
Number of labels (in this example 1)

Integration into SAP R/3*

In cooperation with SAP, cab developed the "replace method" for controlling cab printers quickly and easily from SAP R/3 using SAPScript. As a Silver Level partner in SAP's Printer Vendor Program, cab has access to the SAP development area for optimum printer support in SAP environments.

* SAP and R/3 are registered trademarks of SAP AG.



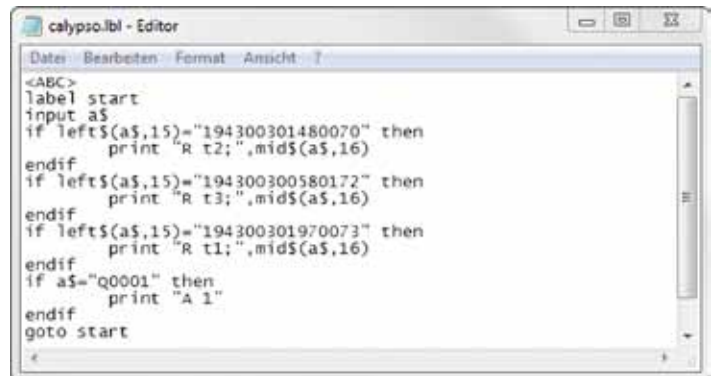
abc – Basic Compiler

As an integrated element of the firmware, the Basic Compiler enables the printer to process data via BASIC programming before it is sent for print editing. This makes it possible for external printer languages to be replaced or data from other systems, e.g. a PLC or balance, to be transferred so information can be printed in different label formats.



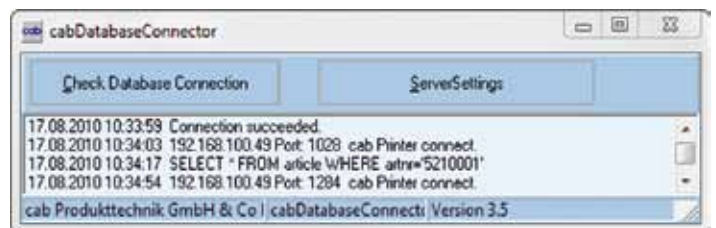
Example of use:

Connection to a balance



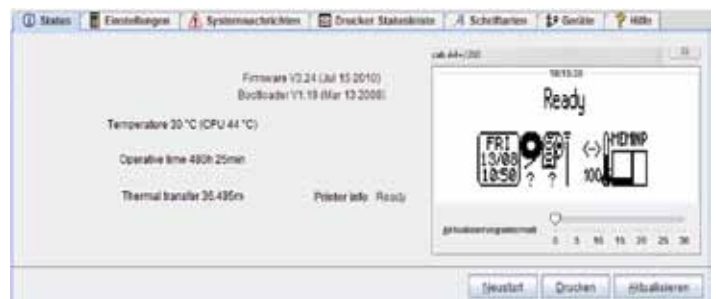
Database Connector

In stand-alone mode with additional network connection, the Database Connector enables stand-alone printers to access data directly from a central SQL-compatible database and to print it as a label. Data can also be written back to the database or changed during the printing process.



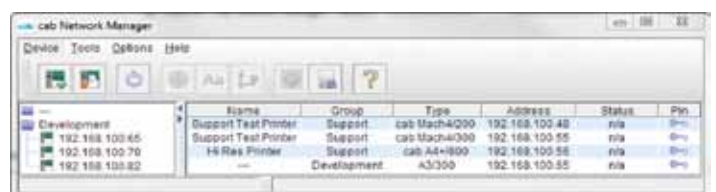
Printer monitoring with Intranet and Internet

Using standard programs such as the web browser or FTP clients, the integrated HTTP and FTP server enables print monitoring, configuration, firmware updates and memory card administration. Status, warning and error messages are sent to administrators or users as e-mails or SNMP datagrams via SNMP and SMTP clients. A time server is used to synchronize the time and date.



Administration Network Manager

The cab Network Manager enables the user to control multiple printers across a network simultaneously. It supports monitoring, configuration, firmware updates, memory card administration, file synchronization and PIN administration centrally.





WHQL-certified Windows printer driver for

Windows XP Windows Server 2003
 Windows Vista Windows Server 2008
 Windows 7 Windows Server 2008 R2

Our printer drivers are officially certified and signed by Microsoft. They ensure optimum stability on your Windows operating system. The programs Word, Excel, Access, Corel Draw, etc. can be used to design and print labels.



Apple-Mac OS X® driver

Alternatively, cab offers a CUPS-based printer driver for Mac OS X.



Linux driver

Alternatively, cab offers a CUPS-based printer driver for Linux.

*Microsoft® is a registered trademark of Microsoft Corporation.
 Mac OS® is a registered trademark of Apple Computer, Inc*

Label software.

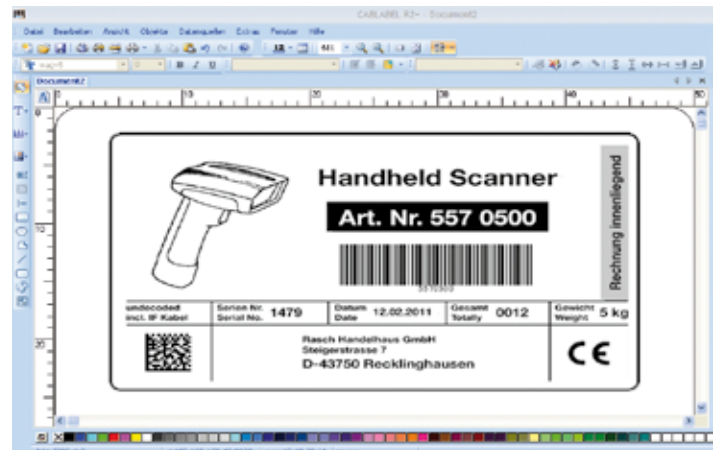
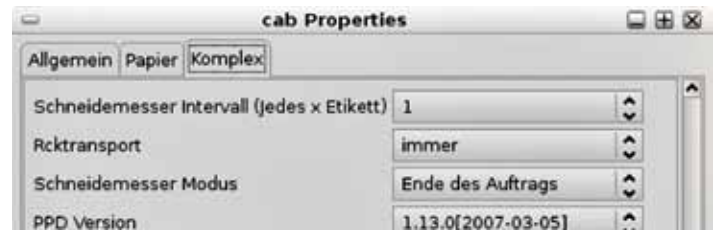
cablabel R2+

A powerful label software that is available free of charge and specially designed for cab printers and print & apply systems.

Different fonts, barcodes and graphics in variable heights, widths and printing directions can be used to produce the best possible label design.

In addition to the loadable TrueType fonts available with MS Windows, cab printers also offer a large number of internal bitmap and vector fonts. Thanks to the support of the most commonly used codepages, country-specific special characters can also be printed.

High-performance functions make it possible to design and print even complex labels in just a few minutes. cablabel R2+ supports special functions of the cab printers, such as real-time clock, printer counter, stand-alone operation without PC, circular fonts or the printout of the printer data stream in a file. The MDI technology makes it possible to open several labels at the same time and to move objects from one label to another.



cablabel R2+ is available in 24 different languages for the following operating systems:

Windows XP Windows Server 2003*
 Windows Vista Windows Server 2008*
 Windows 7 * Terminalserver / Citrix are not supported.

Additional label software

Highest possible variability – other commercially available label software solutions, such as Codesoft, Nicelabel, Easylab, Bartender, Label Matrix or Labelview, support the cab label printers and labeling systems. More information is available on our website.

Technical data.

■ Standard □ Option

Label printer		A4+M		
Printhead	Print method Thermal transfer	■	■	
	Thermal direct	■	–	
	Print resolution dpi	300	600	
	Print speed up to mm/s	30, 40, 50, 75, 100, 125	30, 40, 50, 75, 100	
	Print width mm	105.6	105.6	
Material	Labels, continuous rolls or fan-folded	Paper, cardboard, textiles, plastics such as PET, PE, PP, PVC, PU, acrylate, PI		
	Thickness mm / weight g/m ²	0.05 – 0.8 / 60 – 300		
	Label width ¹⁾ mm	4 – 106		
	Width of liner or continuous material mm	10 – 110		
	Heat shrink tube mm	3.5 – 110		
	Label height ¹⁾ without back-feed	from mm	5	5
		up to mm	4000	1000
	Media roll	Total diameter up to mm	205	
		Core diameter mm	38 – 100	
		Winding direction	Outside or inside	
Ribbon	Ink	Outside or inside		
	Roll diameter up to mm	80		
	Core diameter mm	25		
	Ribbon length variable up to m	500		
	Width ²⁾ up to mm	50 – 114		
Printer dimensions	Height x Depth mm	274 x 446		
	Width mm	242		
	Weight kg	9		
Label sensor	Gap sensor	For leading edge of the label or punching marks and end of material		
	Reflective sensor from the bottom / from the top	For printing marks		
	Distance to locating edge mm	0 – 53		
Electronics	Processor high speed 32 Bit ColdFire / clock rate MHz	266		
	RAM MB	64		
	Memory IFFS MB Flash	8		
	Slot for CompactFlash Type I memory card	■		
	Slot for wireless LAN card	■		
	Battery buffer for	Real-time clock, printout of time and date, data storage on shut-down		
	Warning signal	Acoustic signal in case of error		
Interfaces	Centronics bi-directional acc. to IEEE 1284	□		
	RS232 C 1,200 up to 230,400 Baud / 8 Bit	■		
	USB 2.0 high speed slave for PC connection	■		
	Ethernet 10/100 Base T, LPD, RawIP printing, ftp printing, DHCP, HTTP, FTP, SMTP, SNMP, TIME, Zeroconf, mDNS, SOAP	■		
	RS422, RS485 1,200 up to 230,400 Baud / 8 Bit	□		
	Peripheral connection	■		
	WLAN card 802.11 b/g WEP / WPA PSK (TKIP)	□		
	2x USB master for	External operation panel, keyboard, scanner, service key, USB flash drive		
	Operation data	Power supply	100 – 240 V ~ 50 / 60 Hz, PFC	
		Power consumption	Max. 300 W	
Temperature / humidity:		Operation	+5 – 40°C / 10 – 85% not condensing	
		Storage	+0 – 60°C / 20 – 85% not condensing	
		Transport	-25 – 60°C / 20 – 85% not condensing	
Approvals	CE, FCC class A, CB, CCC, UL			

¹⁾ Limitations may apply to small labels, thin materials or strong adhesives. Critical materials or applications must be tested and approved.

²⁾ The ribbon should be roughly the same width as the label in order to avoid folding.



With innovative technology for better climate protection
Energy saving – Environmentally friendly

Label printer		A4+M	
Operation panel	Buttons / LED display	Pause, Feed, Cancel, Menu, Enter, 4 x Cursor	
	LCD graphic display	Width 60 mm, height 40 mm, text 4 lines, ca. 20 characters per line	
Settings		Time, date, digital or analog clock 25 language settings System settings, print parameters, interfaces, security	
Monitoring	Stop printing if:	End of ribbon End of labels Printhead open	
	On the display	Data reception Clock WLAN field intensity Date sheet Ethernet status abc Debug	Used memory Input buffer Temperature of printhead Remaining quantity of ribbon Access to memory card
Test routines	System diagnosis	When switched on, incl. printhead testing	
	Short status, status print	Font list, device list, WLAN status, label profile, test grid, monitor mode, PPP status	
	Status reports	Extensive status printout with information about settings, e.g. print length counter, runtime counter, etc. Request of machine status via software commands. Detailed status messages on the display, e.g. network error – no link, barcode error, etc.	
Fonts	Font types	5 Bitmap fonts incl. OCR-A, OCR-B and 3 Vector fonts Swiss 721, Swiss 721 Bold and Monospace 821 available internally, loadable TrueType fonts. Thai and Chinese (simplified Chinese) available as options.	
	Character sets	Windows 1250 up to 1257, DOS 437, 737, 775, 850, 852, 857, 862, 864, 866, 869, EBC DIC 500, ISO 8859-1 to -10 and -13 up to -16, WinOEM 720, UTF-8, Macintosh Roman, DEC MCS, KOI8-R. All West and East European Latin, Cyrillic, Greek, Hebrew and Arabic characters are supported. Thai and Chinese available as options.	
	Bitmap fonts	Size of width and height 1 – 3 mm Zoom 2 – 10 Orientation 0°, 90°, 180°, 270°	
	Vector / TrueType fonts	Size of width and height 0.9 – 128 mm Variable zoom, Orientation 360° in steps of 1°	
	Font formats	Bold, italic, underlined, outline, negative, gray, vertical, depending on character fonts	
Graphics	Graphic elements	Line, arrow, box, circle, ellipse, filled and filled with fading	
	Graphic formats	PCX, IMG, BMP, TIF, MAC, GIF, PNG	
Barcodes	Linear barcodes	Code 39, Code 93 Code 39 Full ASCII Code 128 A, B, C EAN 8, 13 EAN / UCC 128 EAN / UPC Appendix 2 EAN / UPC Appendix 5 FIM HIBC	Interleaved 2 / 5 Ident- and lead code of Deutsche Post AG Codabar JAN 8, 13 MSI Plessey Postnet RSS 14 UPC A, E, E0
	2D codes	Aztec, Codablock F, Data Matrix, PDF 417, Micro PDF 417, UPS Maxicode, QR-Code, RSS 14 truncated, limited, stacked and stacked omnidirectional, EAN-Datamatrix, GS1 Data Bar All codes variable in height, module width and ratio. Orientation 0°, 90°, 180°, 270°. Optionally with check digit, printed characters and start/stop code, depending on code type.	
Software	Programming	J-Script direct programming abc – Basic Compiler Database Connector	■ ■ □
	System diagnosis / administration	Printer monitoring Network Manager	■ □
	Label software	cablabel R2+ Codesoft, NiceLabel, Easylabel Bartender, Label Matrix, Labelview	■ ○□ ○
	Windows driver certified	32/64 bit for Windows XP Server 2003 Windows Vista Server 2008 Windows 7 Server 2008 R2	■
	Mac driver	OS X printer driver from version 10.4	■
	Linux driver	Tested with Suse 9.0, CUPS-based	■
	Stand-alone operation		■

For current data, please go to www.cab.de

Accessories for basic devices.

Cutter

The cutter is used to cut paper, pressure sensitive labels, cardboard, textiles, synthetics or heat shrink tubes.

Perforation cutter and cutter

The perforation cutter also permits the perforation of the material in order to separate it manually.

Cutter tray

The cutter tray can pile up up to 50 labels.

Stacker with cutter

The printed materials are cut and piled up with the stacker. The print job stops when the height of the pile is reached. There might be restrictions at the use of stiff or curved materials. We recommend the testing of such materials at cab.



Adapter 100 mm Ø

To keep the bending of the material during piling as small as possible cab recommends a broad core diameter.



Storage table label width x height

The storage table and the protective cover are adjusted to the label size and have to be ordered separately.



Base frame A4+M

With the base frame the devices can be arranged on the table in any order.

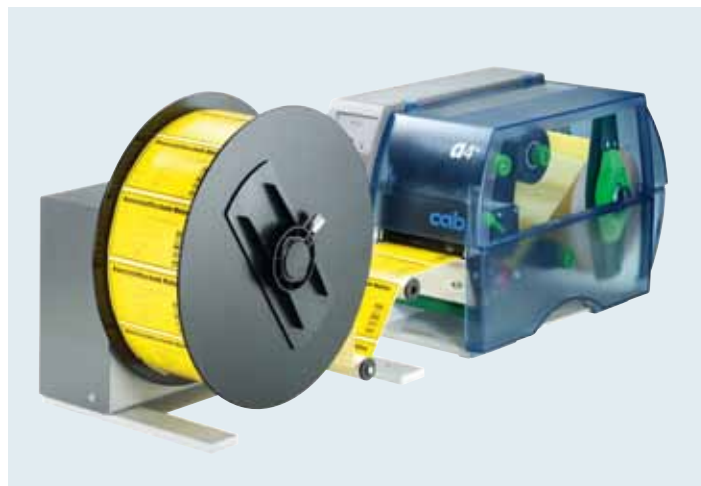


	Cutter CU4	Perforation cutter and cutter PCU4	Stacker with cutter ST4 / M
Material width up to mm	110	110	20 – 100
Weight of material gr/m ² / cardboard	60 – 500	60 – 300	60 – 300
Material thickness mm	0.05 – 0.8	0.05 – 0.8	0.05 – 0.8
Cutting length mm	> 5	> 5	20 – 150
Gap height up to mm	2.5	4.5	1.2
Cuts/min.	120	Cutting 120 / Perforating 150	120
Stop print job if:	Final position not reached	Final position not reached	Final position not reached, cover open, height of pile is reached
	Cutter tray 4 □	Perforating	Piling up reached
	For material width up to mm 120 material height up to mm 100	Web width mm 0.5 Web distances mm 2.5 or 10	Height of pile up to mm 140

Accessories for basic devices.

External rewinder ER 4/6/8 with built-in power supply

The rewinder can be attached to almost every other printer. All other technical data are according to the rewinder.



Tesster for linear barcodes

The built-in scanner tests the barcodes directly after printing. If the barcode is not readable the printing process can be stopped at once so the faulty labels can be removed. It is primarily intended to be used with the external rewinder ER4 – ER8.



	External rewinder	
	ER4 / 210	ER4 / 300
Material width up to mm	120	120
Roll Ø max. mm	205	205
Core Ø mm	40 / 76	40 / 76
Operating voltage	100 – 240 V~ 50 / 60 Hz	
Label winding	Outside or inside	

The cab delivery program.

EOS 1/4 label printer



MACH4 label printer



A+ series label printers



XD4 label printer



XC series label printer



Hermes+ Print and Apply



PX series print module



FL series laser marking systems



Laser safety housing



Label software



VS 120 label dispenser

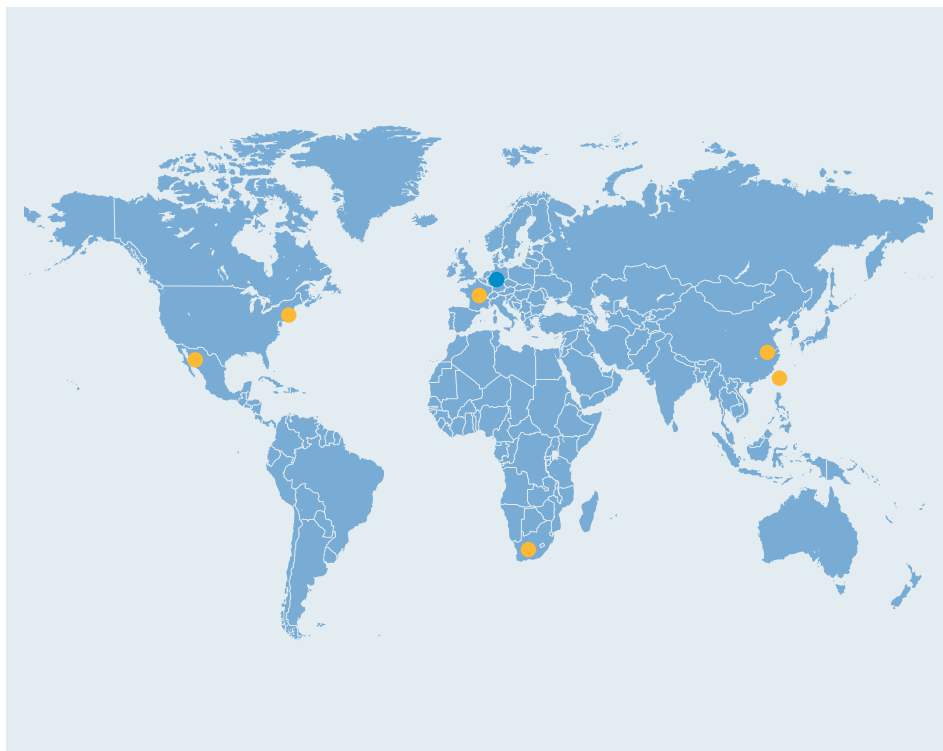


Labels / ribbons



- *Headquarters in Germany*
- *cab subsidiaries*
350 distribution partners
in more than 80 countries.

cab is represented in every active commercial center - worldwide.



www.cab.de

Germany

cab Produkttechnik
GmbH & Co KG
Postfach 1904
76007 Karlsruhe
Wilhelm-Schickard-Str. 14
76131 Karlsruhe
Telefon +49 721 6626-0
Telefax +49 721 6626-249
www.cab.de
info@cab.de

Representatives in other countries on request.

France

cab technologies s.a.r.l.
67350 Niedermodern
Téléphone +33 388 722 501
www.cab.de/fr
info.fr@cab.de

USA

cab Technology Inc.
Tyngsboro MA, 01879
Phone +1 978 649 0293
www.cab.de/us
info.us@cab.de

South Africa

cab Technology (Pty.) Ltd.
2125 Randburg
Phone +27 11-886-3580
www.cab.de/za
info.za@cab.de

Asia 亚洲

cab Technology Co, Ltd.
希爱比科技股份有限公司
Junghe, Taipei, Taiwan
Phone +886 2 8227 3966
www.cab.de/tw
info.asia@cab.de

China 中国

cab (Shanghai) Trading Co., Ltd
铠博(上海)贸易有限公司
Phone +86 21 6236-3161
www.cab.de/cn
info.cn@cab.de

This documentation and any translations hereof are the property of cab GmbH & Co KG.

The replication, processing, reproduction or distribution in whole or in parts requires our prior written consent. © Copyright by cab

All delivery, design and technical specifications are compiled to the best of our current knowledge and are subject to change without prior notice.